

ROUTE	SECTION	COUNTY	TOTAL SHEETS	SHEET NUMBER
FAI 94	2010-128-I	COOK	27	1

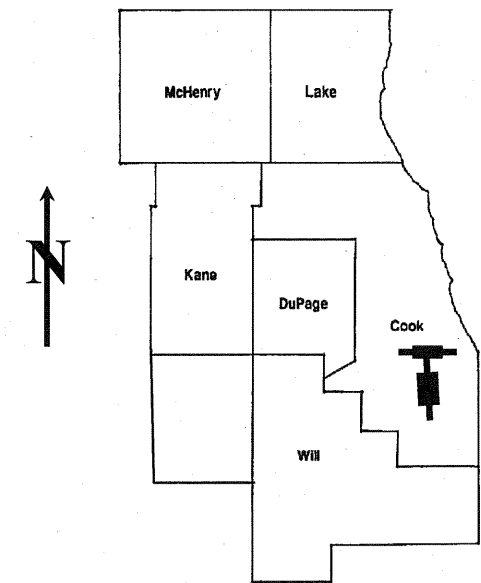
FOR INDEX OF SHEETS SEE SHEET 2

IMPROVEMENTS ARE LOCATED IN
THE VILLAGE OF LANSING AND
SAUK VILLAGE

STATE OF ILLINOIS
DEPARTMENT OF TRANSPORTATION
DIVISION OF HIGHWAYS
DISTRICT ONE
PROPOSED HIGHWAY PLANS

CONTRACT NO. 60N02

D-91-208-11



LOCATION OF IMPROVEMENT INDICATED THUS: 

FAI RTE 94: I-94 (BISHOP FORD EXPY)
AT VARIOUS LOCATIONS
(SOUTH OF 159TH ST. TO INDIANA STATE LINE
INCLUDING IL 394 INTERCHANGE AND IL 83 / TORRENCE AVE.).
SECTION 2010-128-I
BRIDGE DECK SEALING
COOK COUNTY
C-91-208-11

STATE OF ILLINOIS
DEPARTMENT OF TRANSPORTATION
DIVISION OF HIGHWAYS

SUBMITTED: OCTOBER 29 20 10

Diane M. O'Keefe DE
DEPUTY DIRECTOR OF HIGHWAYS, REGION ENGINEER

_____ 20 _____
ENGINEER OF DESIGN AND ENVIRONMENT

_____ 20 _____
DIRECTOR, DIVISION OF HIGHWAYS

**PRINTED BY THE AUTHORITY
OF THE STATE OF ILLINOIS**

J.U.L.I.E.: JOINT UTILITY LOCATION
INFORMATION FOR EXCAVATION
(800) 892-0123 OR 811

PROJECT ENGINEER ROBERT BORO (847) 705-4178
PROJECT MANAGER ISSAM RAYYAN
CONTRACT 60N02

INDEX OF SHEETS

ROUTE	SECTION	COUNTY	TOTAL SHEETS	SHEET NUMBER
FAI 94	2010-128-I	COOK	27	2

CONTRACT NO. 60N02

- 1 TITLE SHEET
- 2 INDEX OF SHEETS, STATE STANDARDS
- 3 GENERAL NOTES
- 4 SUMMARY OF QUANTITIES
- 5 SCHEDULE OF QUANTITIES
- 6 - 9 LOCATION MAPS
- 10 EXISTING BRIDGE PLANS (BRIDGE NO. 1 SN 016-0456; & 2 SN 016-1041)
- 11 EXISTING BRIDGE PLANS (BRIDGE NO. 3, SN 016-2791)
- 12 EXISTING BRIDGE PLANS (BRIDGE NO. 4, SN 016-2792)
- 13 EXISTING BRIDGE PLANS (BRIDGE NO. 5, SN 016-2794)
- 14 EXISTING BRIDGE PLANS (BRIDGE NO. 6, SN 016-2795)
- 15 EXISTING BRIDGE PLANS (BRIDGE NO. 7, SN 016-2796)
- 16 EXISTING BRIDGE PLANS (BRIDGE NO. 8, SN 016-2797)
- 17 EXISTING BRIDGE PLANS (BRIDGE NO. 9, SN 016-2798)
- 18 EXISTING BRIDGE PLANS (BRIDGE NO. 10, SN 016-2800)
- 19 EXISTING BRIDGE PLANS (BRIDGE NO. 11, SN 016-2801)
- 20 EXISTING BRIDGE PLANS (BRIDGE NO. 12, SN 016-2802)
- 21 EXISTING BRIDGE PLANS (BRIDGE NO. 13, SN 016-2804)
- 22 EXISTING BRIDGE PLANS (BRIDGE NO. 14, SN 016-2805)
- 23 EXISTING BRIDGE PLANS (BRIDGE NO. 15, SN 016-2807)
- 24 EXISTING BRIDGE PLANS (BRIDGE NO. 16, SN 016-2793)
- 25 TRAFFIC CONTROL AND DETAILS FOR FREEWAY SINGLE AND MULTI-LANE WEAVE (TC-9)

- 26 TRAFFIC CONTROL DETAILS FOR FREEWAY SHOULDER CLOSURES AND PARTIAL RAMP CLOSURES (TC-17)
- 27 ARTERIAL ROAD INFORMATION SIGN (TC-22)

STATE STANDARDS

- 701301-04 LANE CLOSURE, 2L, 2W, SHORT TIME OPERATIONS
- 701400-05 APPROACH TO LANE CLOSURE, FREEWAY / EXPRESSWAY
- 701401-06 APPROACH TO LANE CLOSURE, FREEWAY / EXPRESSWAY
- 701411-07 LANE CLOSURE, MULTILANE, AT ENTRANCE OR EXIT RAMP FOR SPEEDS > OR EQUAL TO 45 MPH
- 701446-02 TWO LANE CLOSURE FREEWAY / EXPRESSWAY
- 701601-07 URBAN LANE CLOSURE, MULTILANE, 1W OR 2W WITH NONTRAVERSABLE MEDIAN
- 701801-04 LANE CLOSURE MULTILANE 1W OR 2W CROSSWALK OR SIDEWALK CLOSURE.
- 701901-01 TRAFFIC CONTROL DEVICES.

ILLINOIS DEPARTMENT OF
TRANSPORTATION

INDEX OF SHEETS
STATE STANDARDS

ROUTE	SECTION	COUNTY	TOTAL SHEETS	SHEET NUMBER
FAI 94	2010-128-I	COOK	27	3

CONTRACT NO. 60N02

GENERAL NOTES

BEFORE STARTING ANY EXCAVATION, THE CONTRACTOR SHALL CALL "J.U.L.I.E." AT (800) 892-0123 OR 811 FOR FIELD LOCATIONS OF BURIED ELECTRIC, TELEPHONE AND GAS UTILITIES. 48 HOURS NOTIFICATION IS REQUIRED.

THE CONTRACTOR SHALL COORDINATE CONSTRUCTION ACTIVITIES WITH UTILITY COMPANIES & THE VILLAGES OF LANSING AND SAUK VILLAGE.

IT SHALL BE THE CONTRACTOR'S RESPONSIBILITY TO VERIFY ALL DIMENSIONS & CONDITIONS EXISTING IN THE FIELD PRIOR TO CONSTRUCTION & ORDERING OF MATERIALS.

THE CONTRACTOR WILL NOT BE ALLOWED TO SET UP A YARD OR FIELD OFFICE ON STATE PROPERTY WITHOUT WRITTEN PERMISSION FROM THE DEPARTMENT.

THE CONTRACTOR SHALL CONTACT THE DISTRICT ONE TRAFFIC CONTROL SUPERVISOR AT (847) 705-4151 FOR EXPRESSWAYS AND (847) 705-4470 FOR ARTERIALS A MINIMUM OF 72 HOURS IN ADVANCE OF BEGINNING WORK.

DO NOT SCALE PLANS FOR CONSTRUCTION DIMENSIONS.

EXISTING PAVEMENT MARKINGS SHALL BE TEMPORARILY COVERED PRIOR TO APPLICATION OF THE DECK SURFACE TREATMENT TO PREVENT THE MATERIAL FROM BEING APPLIED TO THE MARKINGS. THE TEMPORARY COVERING SHALL BE REMOVED AFTER APPLICATION OF THE DECK SURFACE TREATMENT AND PRIOR TO OPENING TO TRAFFIC. COST IS INCLUDED WITH THE DECK SURFACE TREATMENT SPECIFIED.

THE " ARTERIAL ROAD INFORMATION SIGN (TC-22)" IS APPLICABLE ONLY TO ARTERIAL ROADS AND SHALL NOT BE APPLIED TO EXPRESSWAYS.

ILLINOIS DEPARTMENT OF
TRANSPORTATION

GENERAL NOTES

ROUTE	SECTION	COUNTY	TOTAL SHEETS	SHEET NUMBER
FAI 94	2010-128-I	COOK COUNTY	27	4

CONTRACT NO. 60N02

SUMMARY OF QUANTITIES					
CODE NO	DESCRIPTION	UNITS	100% STATE URBAN TOTAL	CONSTRUCTION TYPE CODE: 0014	
58700300	CONCRETE SEALER	SQ FT	778916		
67100100	MOBILIZATION	L SUM	1		
70102630	TRAFFIC CONTROL AND PROTECTION, STANDARD 701601	L SUM	1		
70102640	TRAFFIC CONTROL AND PROTECTION, STANDARD 701801	L SUM	1		
X7011015	TRAFFIC CONTROL AND PROTECTION (EXPRESSWAYS)	L SUM	1		
Z0026346	NIGHTTIME WORK ZONE LIGHTING	L SUM	1		
Z0030850	TEMPORARY INFORMATION SIGNING	SQ FT	51.4		
Z0048665	RAILROAD PROTECTIVE LIABILITY INSURANCE	L SUM	1		

ILLINOIS DEPARTMENT OF
TRANSPORTATION

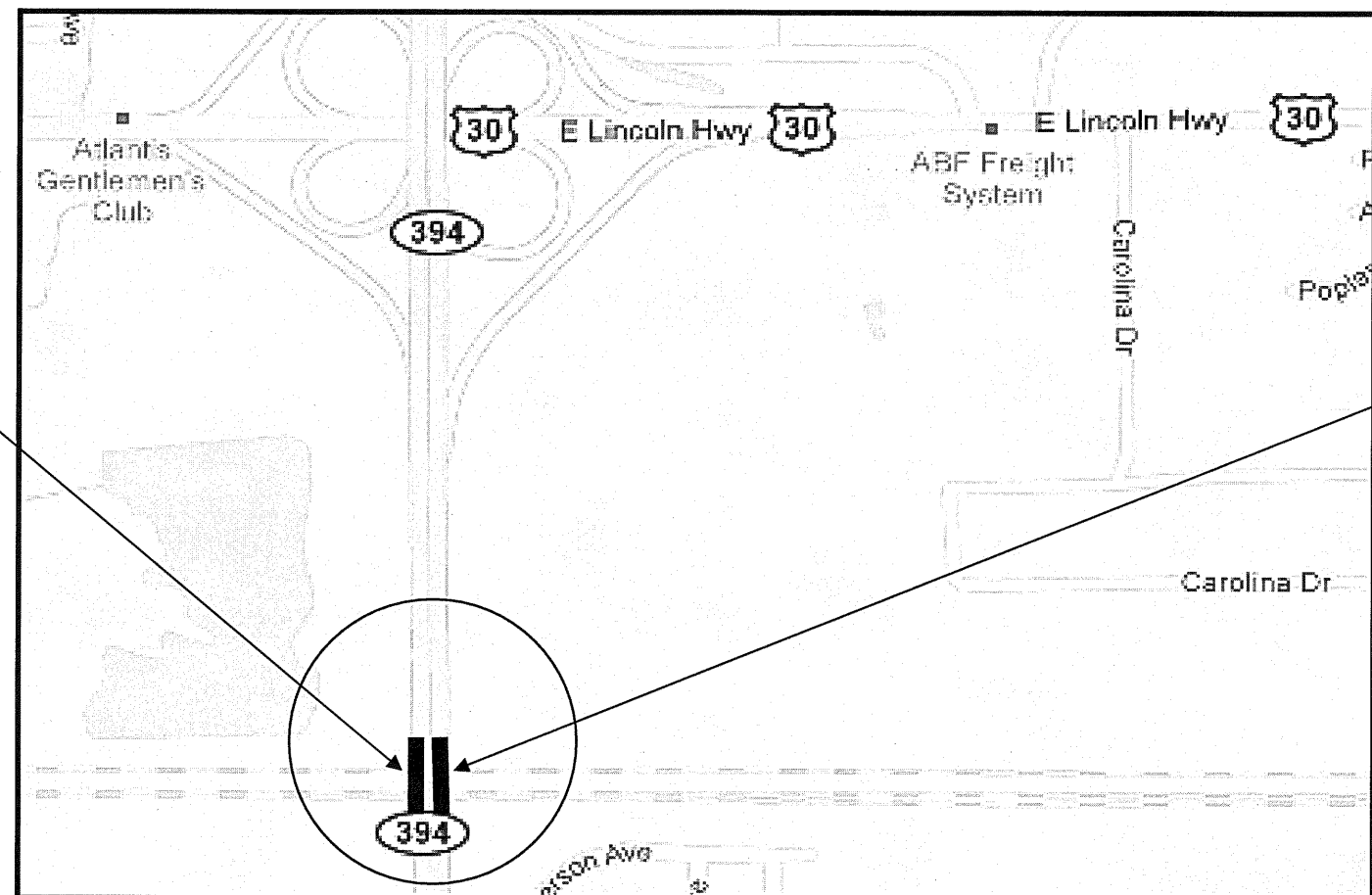
SUMMARY OF QUANTITIES

ROUTE	SECTION	COUNTY	TOTAL SHEETS	SHEET NUMBER
FAI 94	2010-128-I	COOK	27	6

CONTRACT NO. 60N02



R 14 E



LOCATION 2 (SN 016-1041)
IL 394 SB OVER EJ&E AND NS RR'S
IN SAUK VILLAGE

LOCATION 1 (SN 016-0456)
IL 394 NB OVER EJ&E AND NS RR'S
IN SAUK VILLAGE

T 36 N

BLOOM TOWNSHIP

TRAFFIC DATA

IL 394

2009 ADT = 18800
POSTED SPEED LIMIT = 55 MPH

ILLINOIS DEPARTMENT OF
TRANSPORTATION

LOCATION MAP
LOCATION 1 AND 2

ROUTE	SECTION	COUNTY	TOTAL SHEETS	SHEET NUMBER
FAI 94	2010-128-I	COOK	27	7

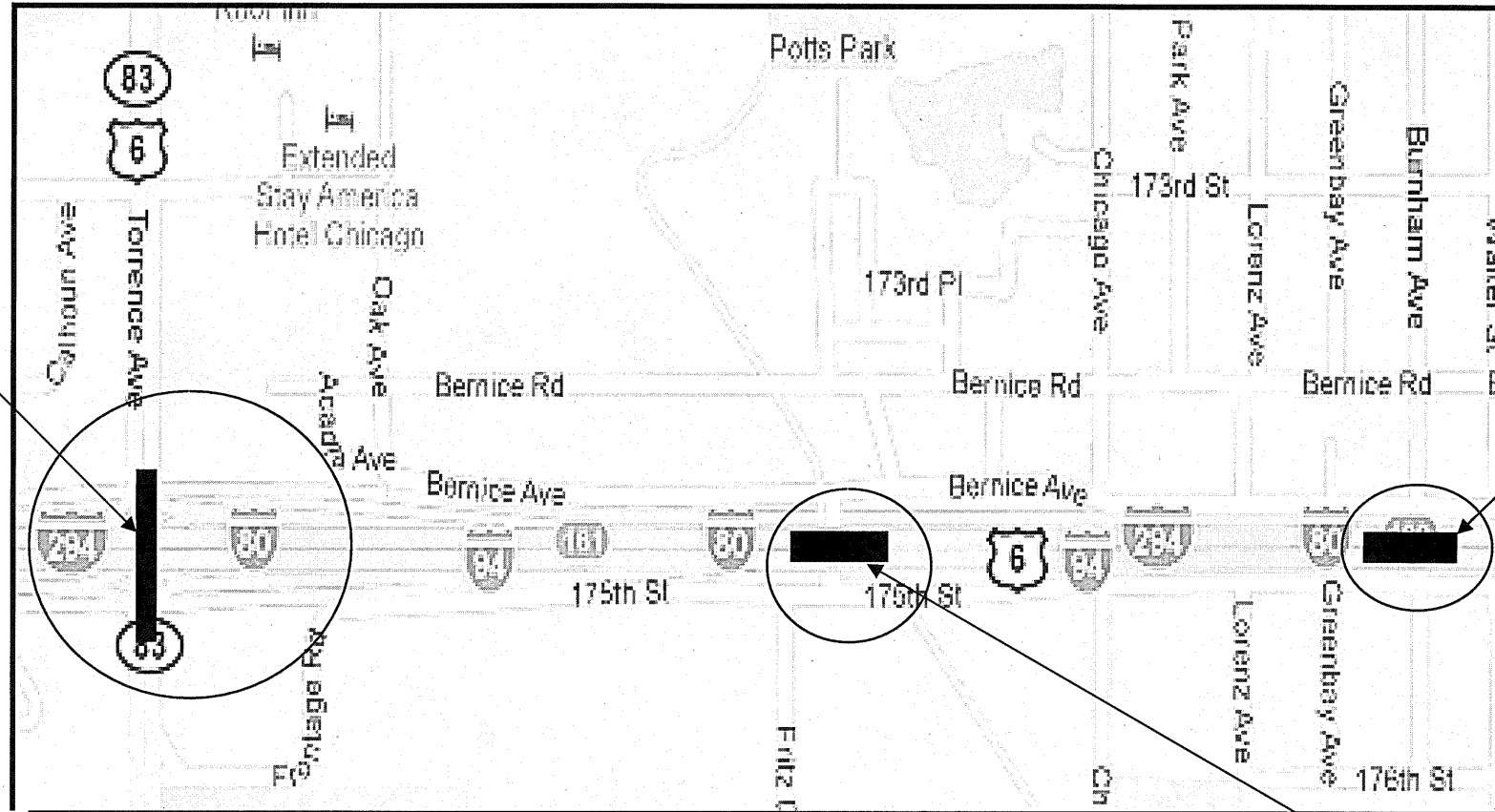
CONTRACT NO. 60N02



R 14 E ← → R 15 E

LOCATION 16: SN 016-2793
IL 83 (TORRENCE AVE.)
OVER I-80, 94 (KINGERY EXPWY.)
IN THE VILLAGE OF LANSING

T 36 N



LOCATION 3: SN 016-2791
I-80, 94 (KINGERY EXPWY.)
OVER BURNHAM AV. IN
VILLAGE OF LANSING

LOCATION 4: SN 016-2792
I-80, 94 (KINGERY EXPWY.)
OVER RAILROAD AVE. IN THE
VILLAGE OF LANSING

TRAFFIC DATA

I-80, 94

2008 ADT = 119300
POSTED SPEED LIMIT = 55 MPH

IL 83

2008 ADT = 59650
POSTED SPEED LIMIT = 30 MPH

THORNTON TOWNSHIP

ILLINOIS DEPARTMENT OF
TRANSPORTATION

LOCATION MAP
LOCATION 3, 4, 16

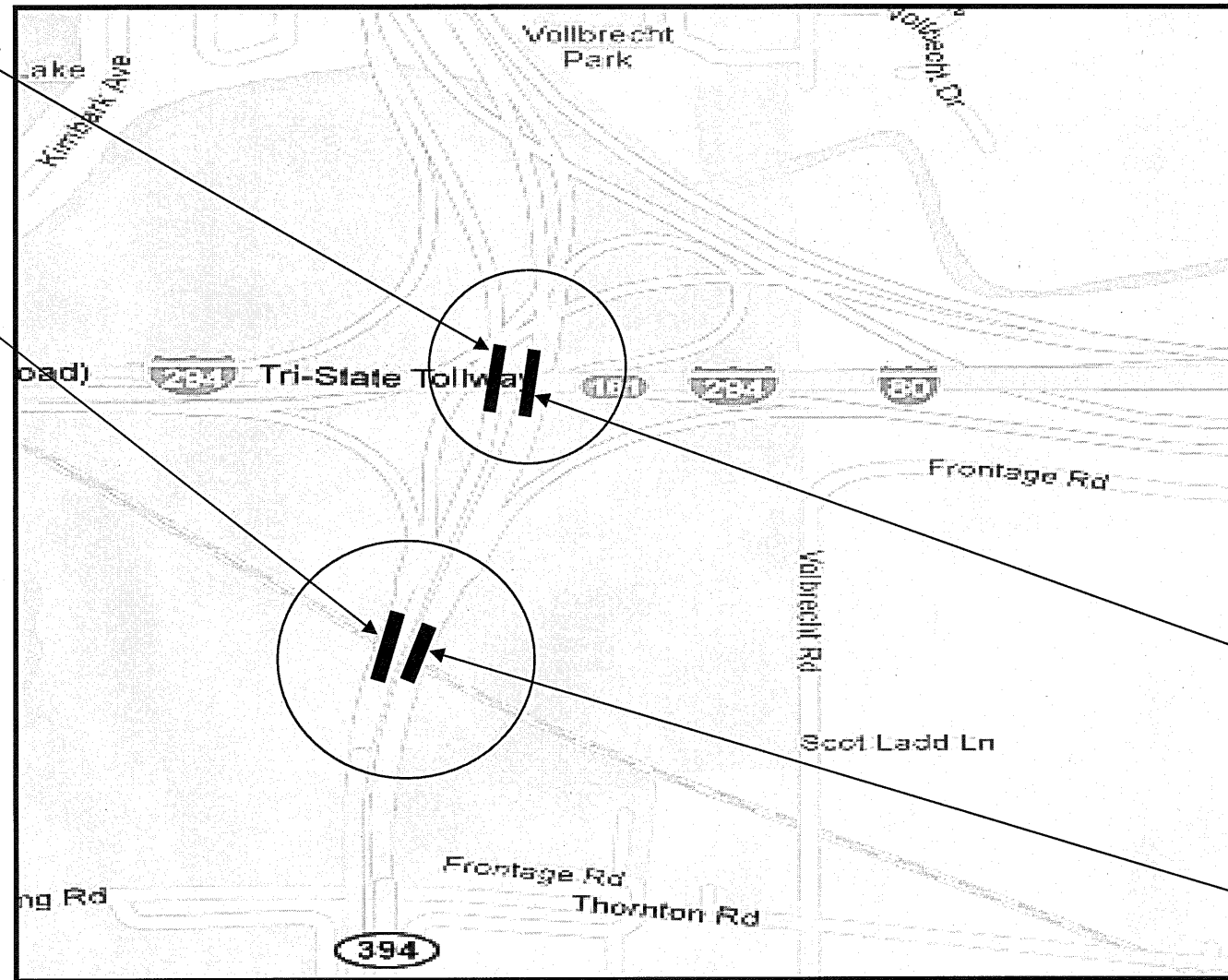
ROUTE	SECTION	COUNTY	TOTAL SHEETS	SHEET NUMBER
FAI 94	2010-128-I	COOK	27	8

CONTRACT NO. 60N02



LOCATION 7: SN 016-2796
IL 394 SB OVER I-80 IN THE
VILLAGE OF LANSING

LOCATION 9: SN 016-2798
IL 394 SB OVER RR - CN IN
THE VILLAGE OF LANSING



LOCATION 6: SN 016-2795
IL 394 NB OVER I-80 (KINGERY EXPWY.)
IN THE VILLAGE OF LANSING

LOCATION 8: SN 016-2797
IL 394 NB OVER RR - CN IN
THE VILLAGE OF LANSING

TRAFFIC DATA

IL-394

LOCATION 6 & 7:
2009 ADT = 32450
POSTED SPEED LIMIT = 30 MPH

LOCATION 8:
2009 ADT = 64900
POSTED SPEED LIMIT = 55 MPH

LOCATION 9:
2009 ADT = 32450
POSTED SPEED LIMIT = 55 MPH

THORNTON TOWNSHIP

**ILLINOIS DEPARTMENT OF
TRANSPORTATION**

**LOCATION MAP
LOCATION 6 - 9**

ROUTE	SECTION	COUNTY	TOTAL SHEETS	SHEET NUMBER
FAI 94	2010-128-I	COOK	27	9

CONTRACT NO. 60N02



LOCATION 15: SN 016-2807
I-94 EB OVER THORN CREEK
IN THE VILLAGE OF LANSING

LOCATION 12: SN 016-2802
IL 394 NB OVER I-94 EB AND THORN CREEK
IN THE VILLAGE OF LANSING

R 14 E

LOCATION 10: SN 016-2800
IL 394 AND RAMP FOR I-80 WB
OVER THORN CREEK IN THE
VILLAGE OF LANSING

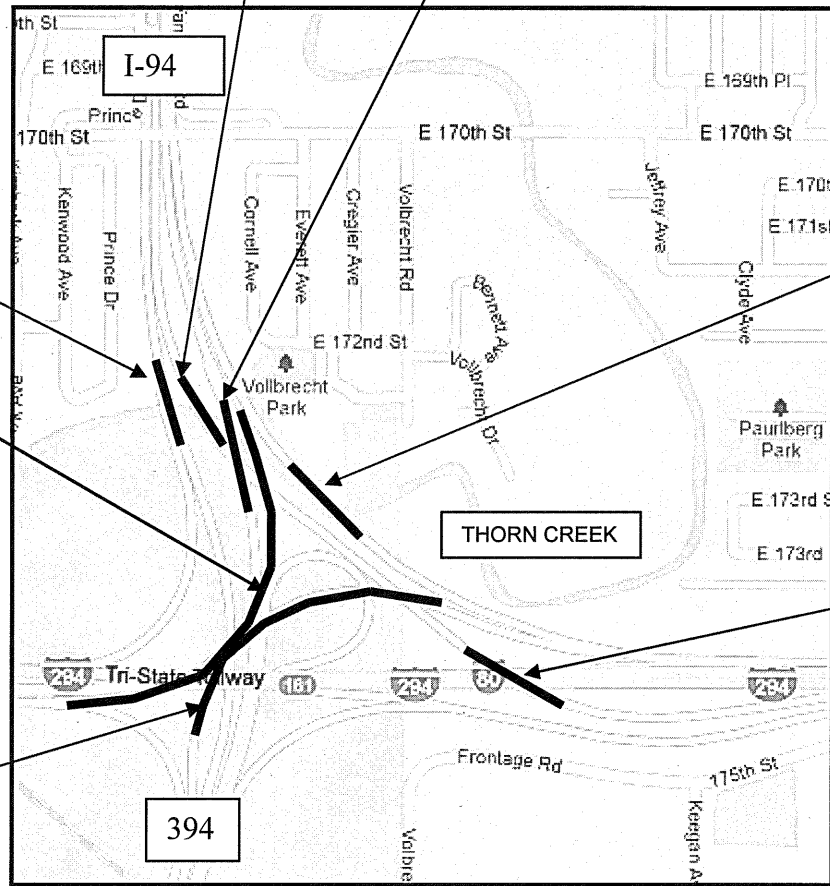
LOCATION 11: SN 016-2801
I-94 (KINGERY EXPWY) NB OVER THORN CREEK
IN THE VILLAGE OF LANSING

LOCATION 14: SN 016-2805
I-80, 294 EB TO NB OVER I-80 & 394 & THORN
CREEK IN THE VILLAGE OF LANSING

T 36 N

LOCATION 5: SN 016-2794
I-94 SB TO I-80 EB OVER I-80 WB
IN THE VILLAGE OF LANSING

LOCATION 13: SN 016-2804
I-94 WB TO IL. 394 SB OVER I-80, I-94
IN THE VILLAGE OF LANSING



THORNTON TOWNSHIP

I-94

LOCATION 5:
2008 ADT = 46150
POSTED SPEED LIMIT = 55 MPH

LOCATION 11:
2008 ADT = 109400
POSTED SPEED LIMIT = 55 MPH

LOCATION 13:
2007 ADT = 10009
POSTED SPEED LIMIT = 55 MPH

LOCATION 15:
2008 ADT = 109400
POSTED SPEED LIMIT = 55 MPH

I-80, 294

LOCATION 14:
2007 ADT = 10009
POSTED SPEED LIMIT = 55 MPH

IL 394

LOCATION 10:
2008 ADT = 8300
POSTED SPEED LIMIT = 55 MPH

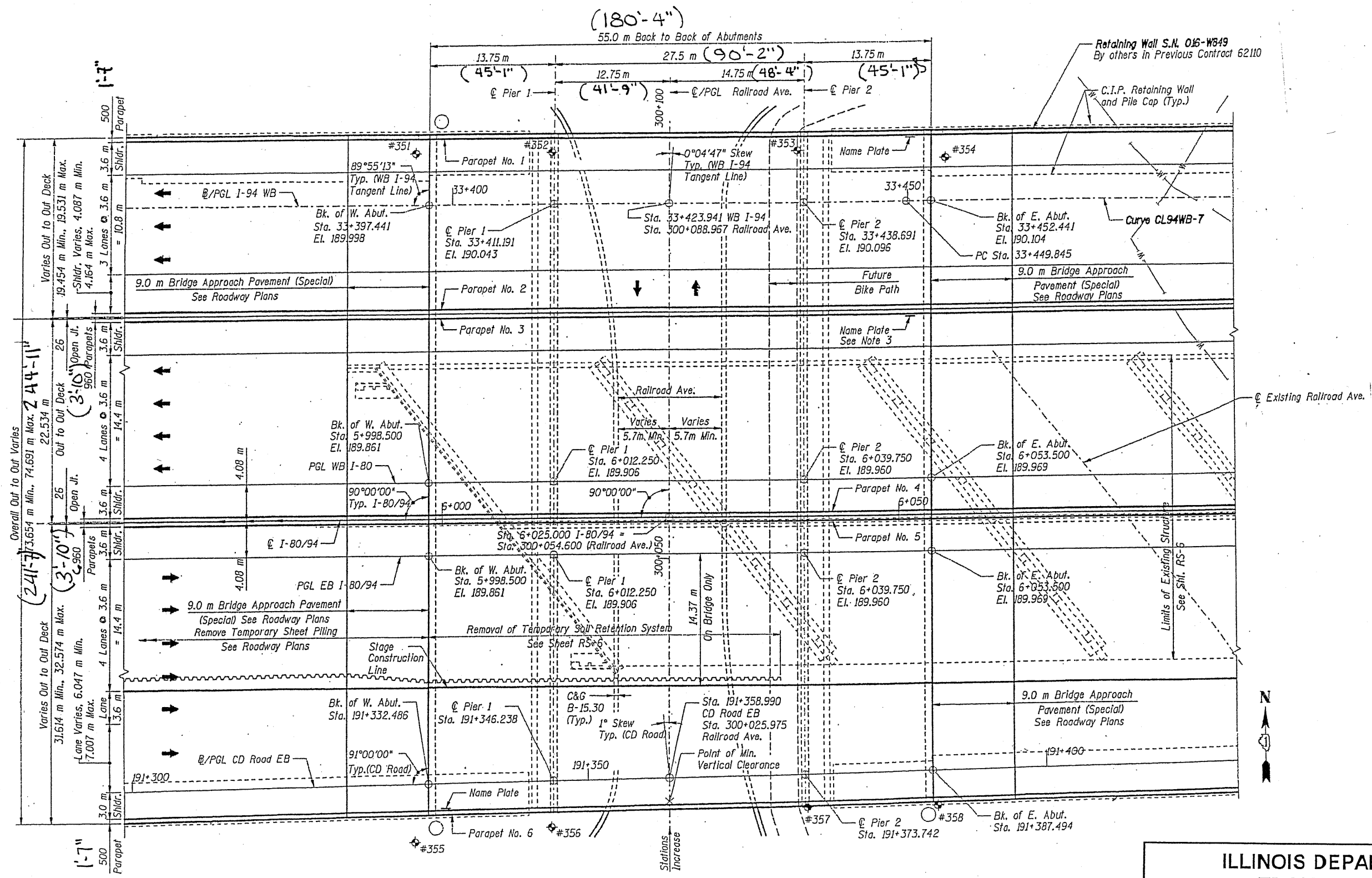
LOCATION 12:
2009 ADT = 32450
POSTED SPEED LIMIT = 55 MPH

TRAFFIC DATA

**ILLINOIS DEPARTMENT OF
TRANSPORTATION**

**LOCATION MAP
LOCATION 5 &
LOCATION 10 - 15**

ROUTE	SECTION	COUNTY	TOTAL SHEETS	SHEET NUMBER
VARIOUS	2010-128-1	COOK	27	12



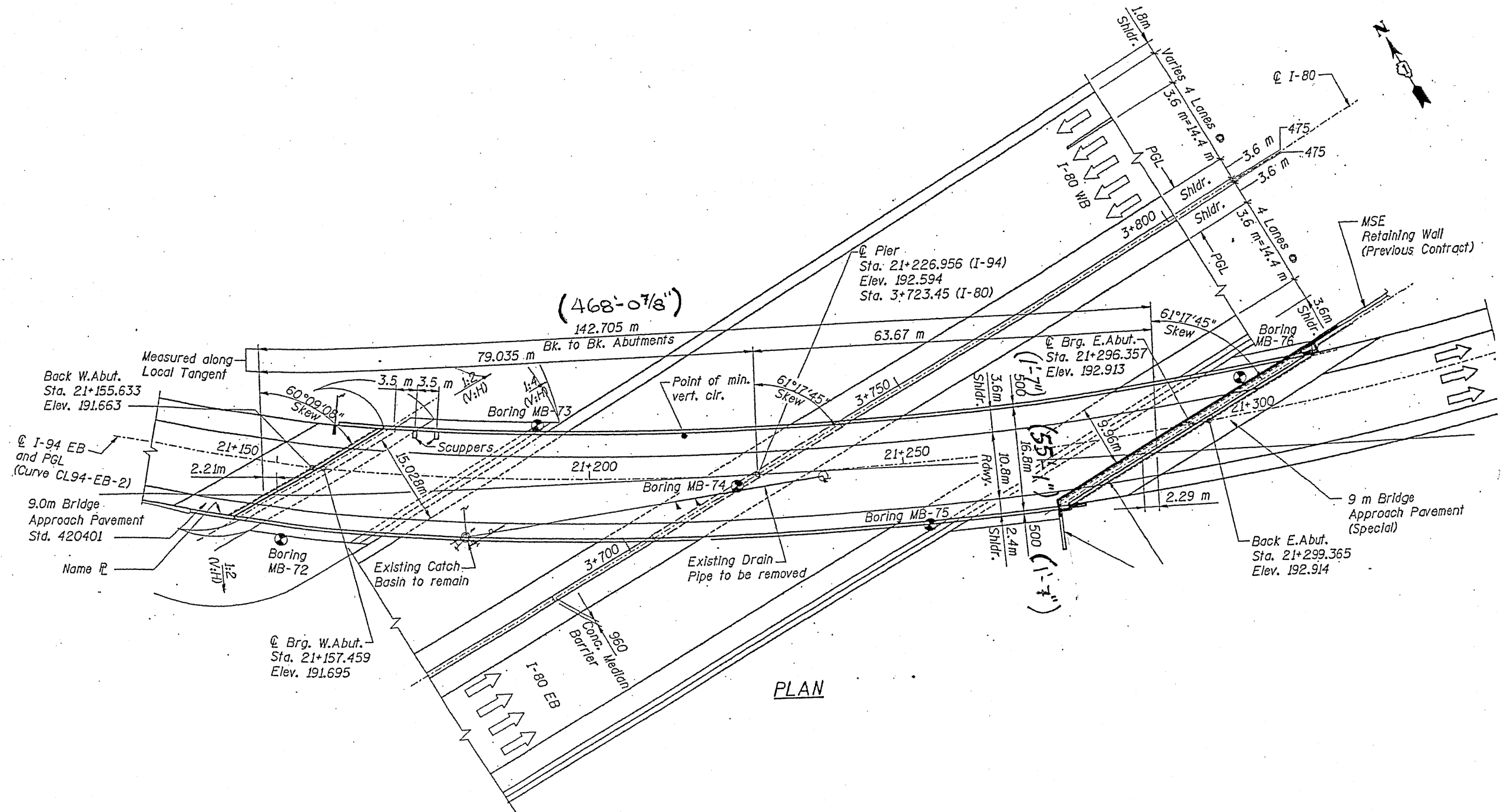
PLAN

FOR INFORMATION ONLY

ILLINOIS DEPARTMENT OF
TRANSPORTATION

EXISTING PLANS
LOCATION 4 (SN 016-2792)

ROUTE	SECTION	COUNTY	TOTAL SHEETS	SHEET NUMBER
VARIOUS	2010-128-1	COOK	27	13

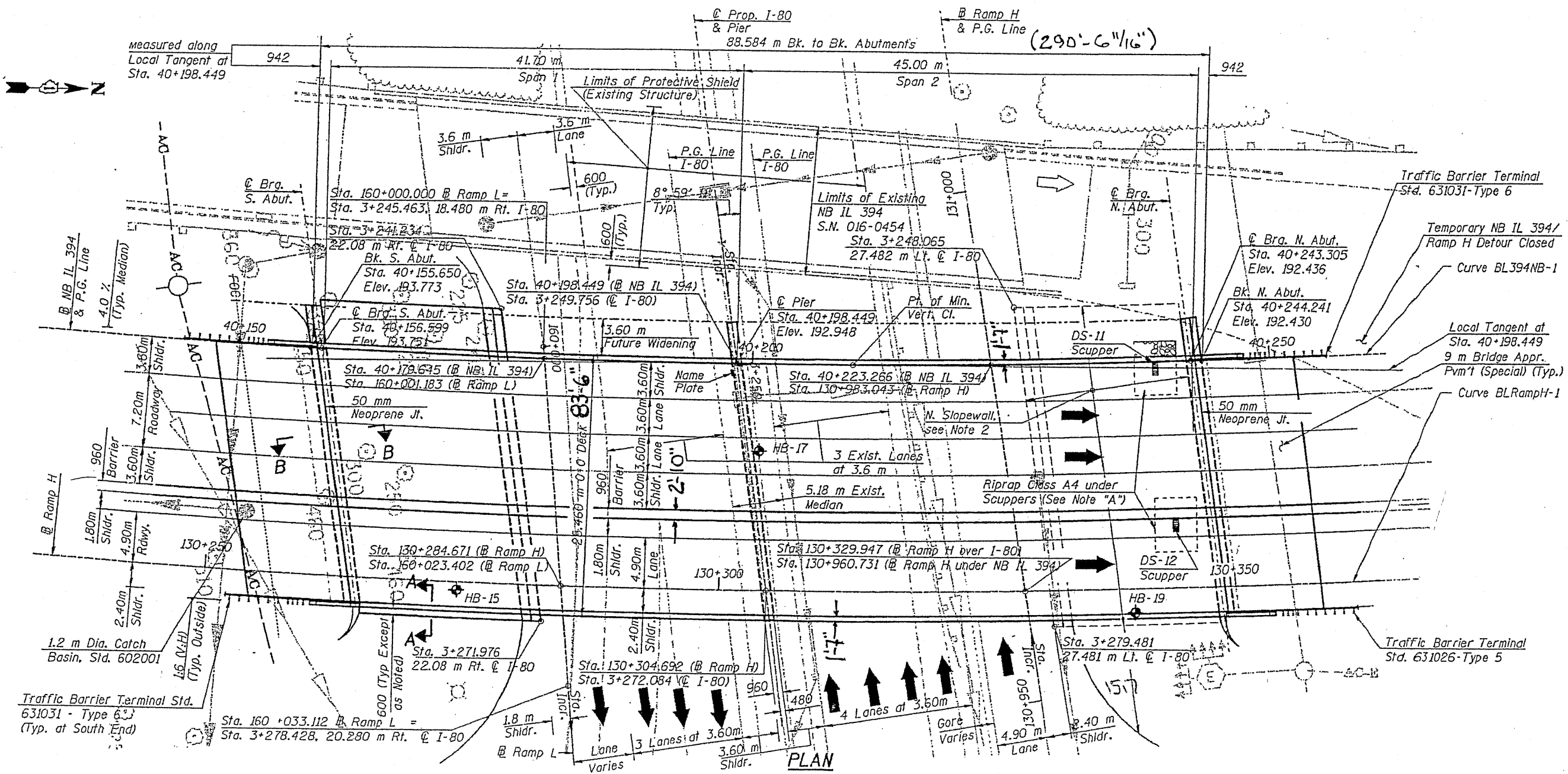


FOR INFORMATION ONLY

ILLINOIS DEPARTMENT OF
TRANSPORTATION

EXISTING PLANS
LOCATION 5 (SN 016-2794)

ROUTE	SECTION	COUNTY	TOTAL SHEETS	SHEET NUMBER
VARIOUS	2010-128-I	COOK	27	14

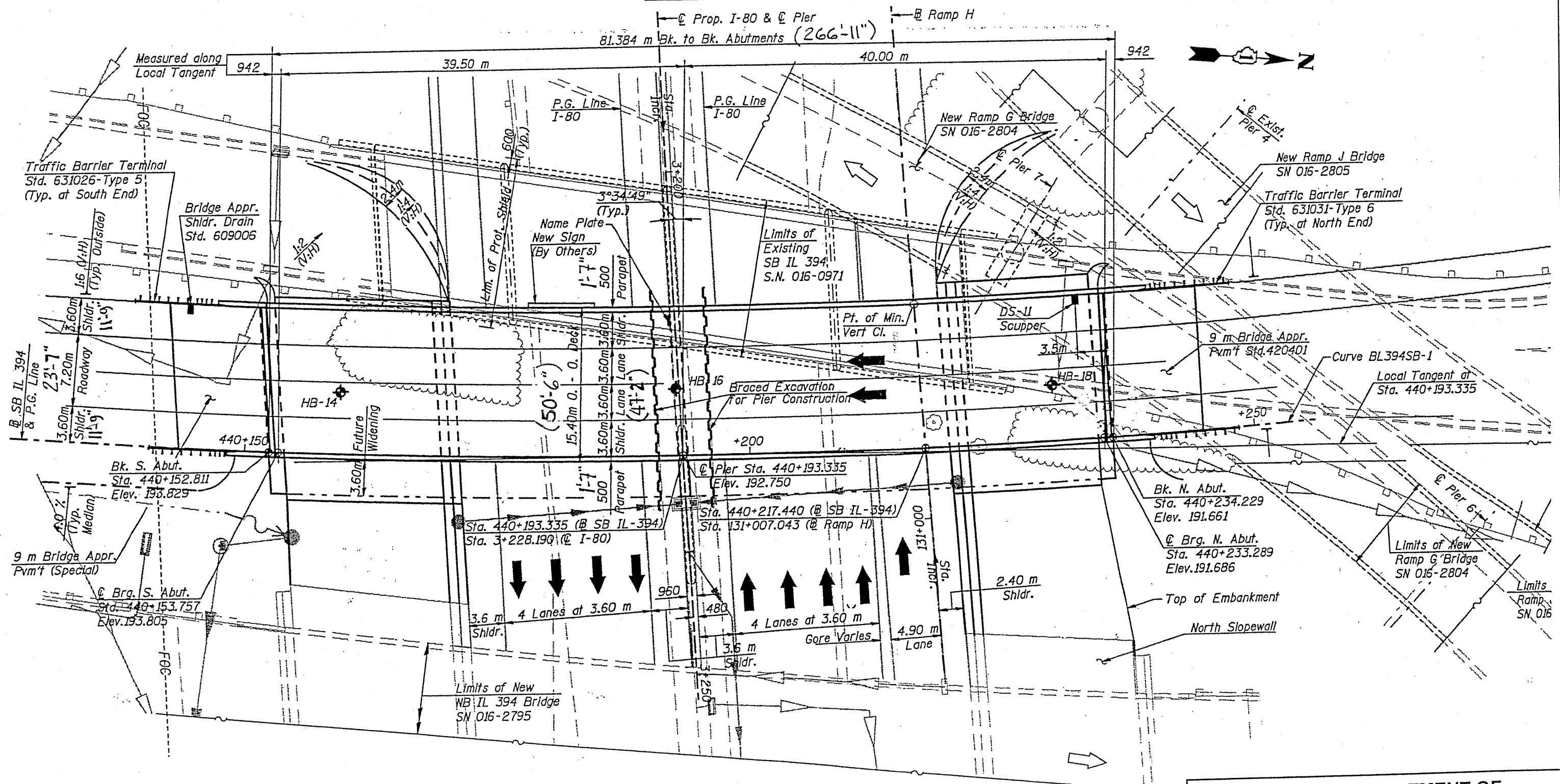


FOR INFORMATION ONLY

ILLINOIS DEPARTMENT OF
TRANSPORTATION

EXISTING PLANS
LOCATION 6 (SN 016-2795)

ROUTE	SECTION	COUNTY	TOTAL SHEETS	SHEET NUMBER
VARIOUS	2010-128-I	COOK	27	15

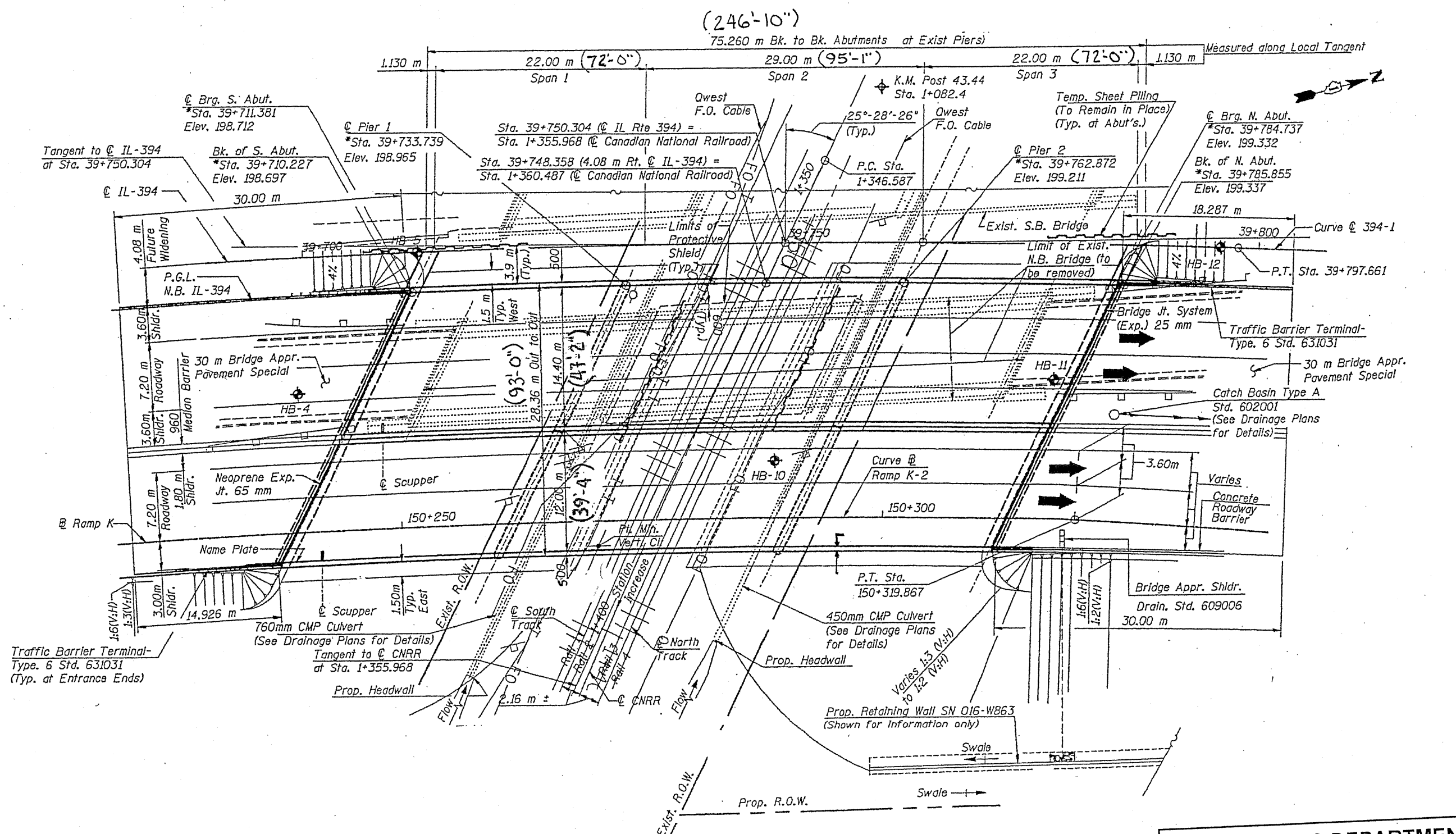


FOR INFORMATION ONLY

ILLINOIS DEPARTMENT OF
TRANSPORTATION

EXISTING PLANS
LOCATION 7 (SN 016-2796)

ROUTE	SECTION	COUNTY	TOTAL SHEETS	SHEET NUMBER
VARIOUS	2010-128-1	COOK	27	16



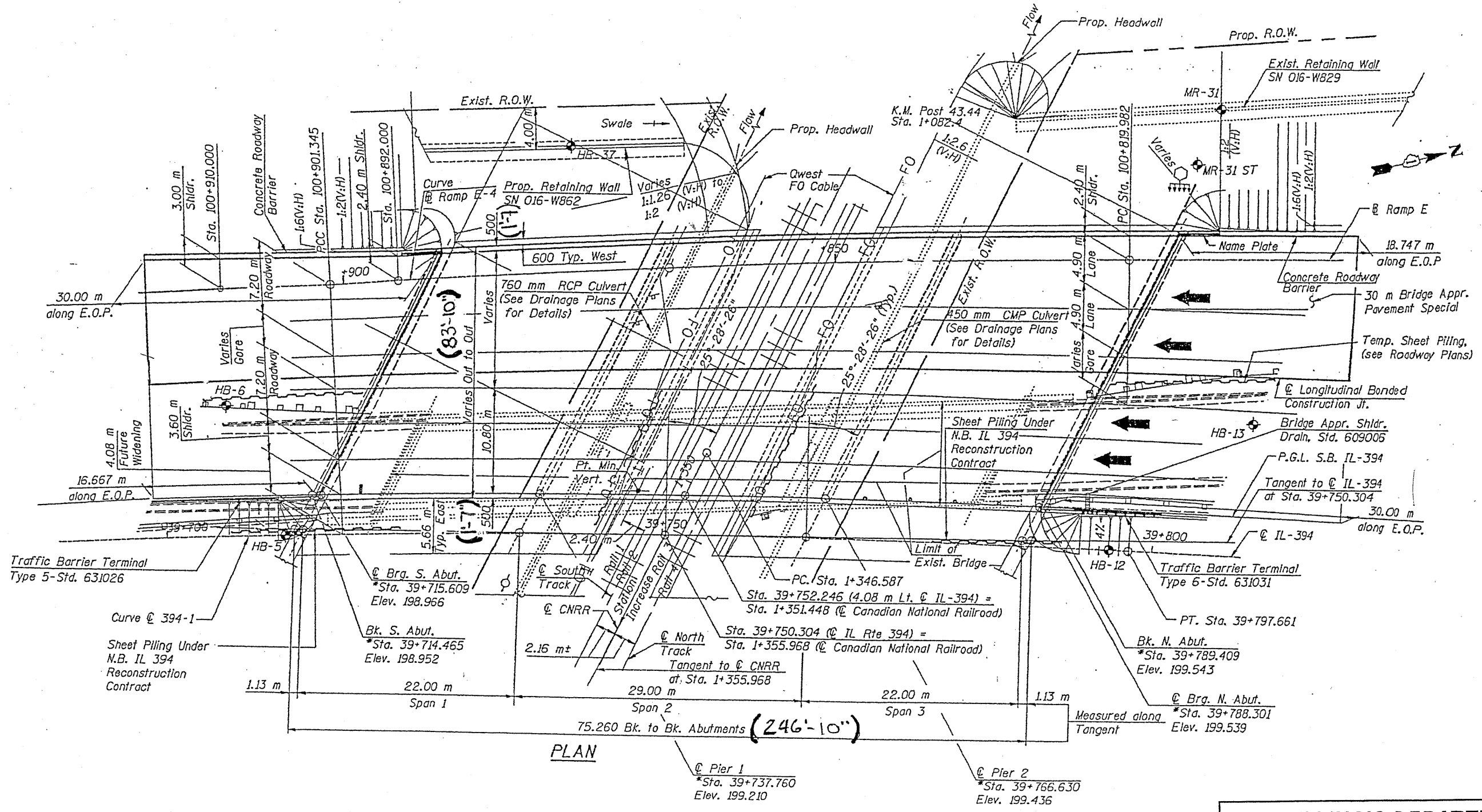
PLAN

FOR INFORMATION ONLY

ILLINOIS DEPARTMENT OF
TRANSPORTATION

EXISTING PLANS
LOCATION 8 (SN 016-2797)

ROUTE	SECTION	COUNTY	TOTAL SHEETS	SHEET NUMBER
VARIOUS	2010-128-1	COOK	27	17



PLAN

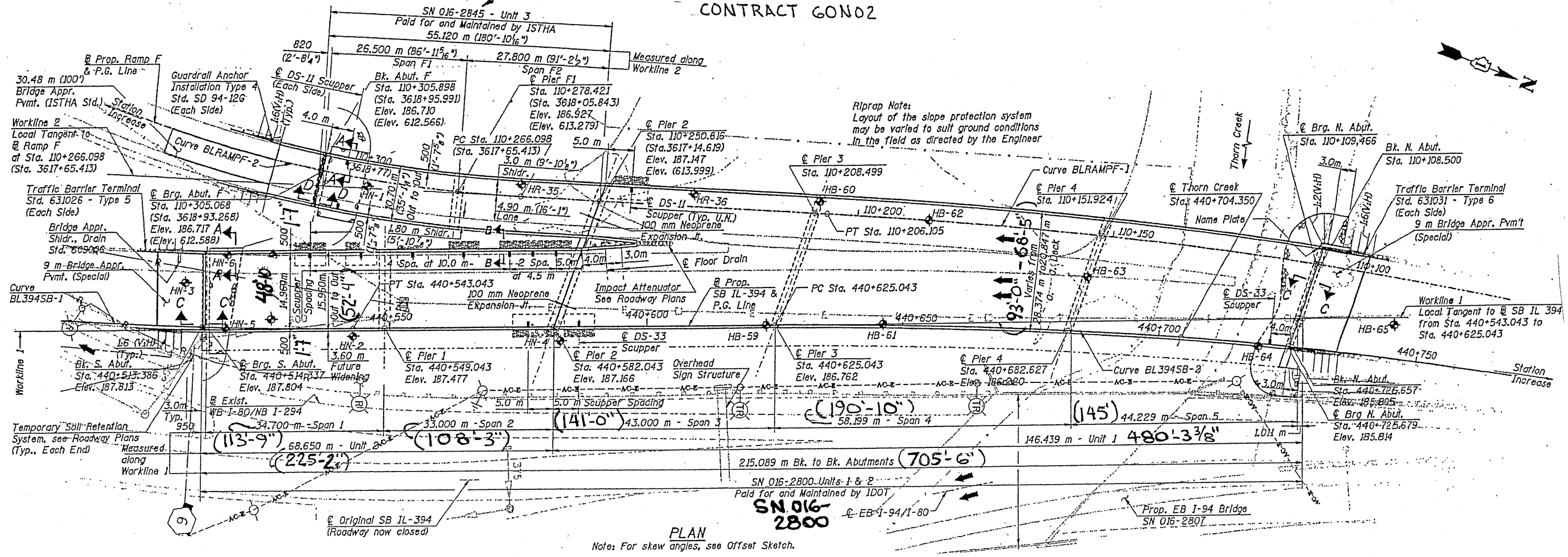
FOR INFORMATION ONLY

ILLINOIS DEPARTMENT OF
TRANSPORTATION

EXISTING PLANS
LOCATION 9 (SN 016-2798)

ROUTE	SECTION	COUNTY	TOTAL SHEETS	SHEET NUMBER
VARIOUS	2010-128-1	COOK	27	18

NOTE:
DO NOT INCLUDE THIS RAMP IN
CONTRACT 60N02



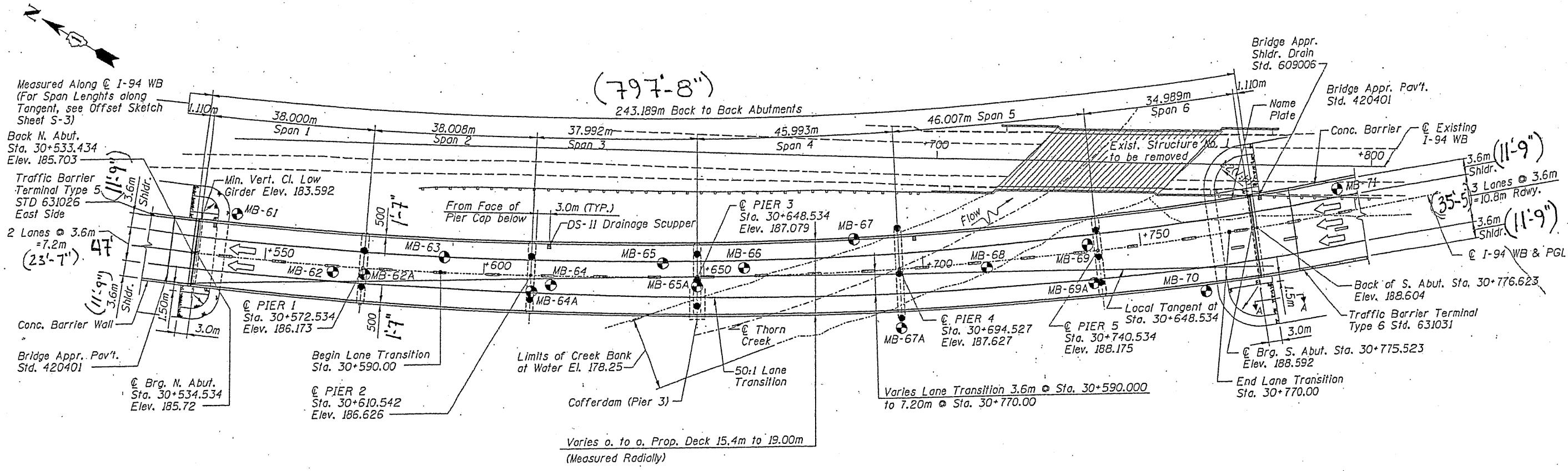
PLAN
Note: For skew angles, see Offset Sketch.

FOR INFORMATION ONLY

ILLINOIS DEPARTMENT OF
TRANSPORTATION

EXISTING PLANS
LOCATION 10 (SN 016-2800)

ROUTE	SECTION	COUNTY	TOTAL SHEETS	SHEET NUMBER
VARIOUS	2010-128-I	COOK	27	19



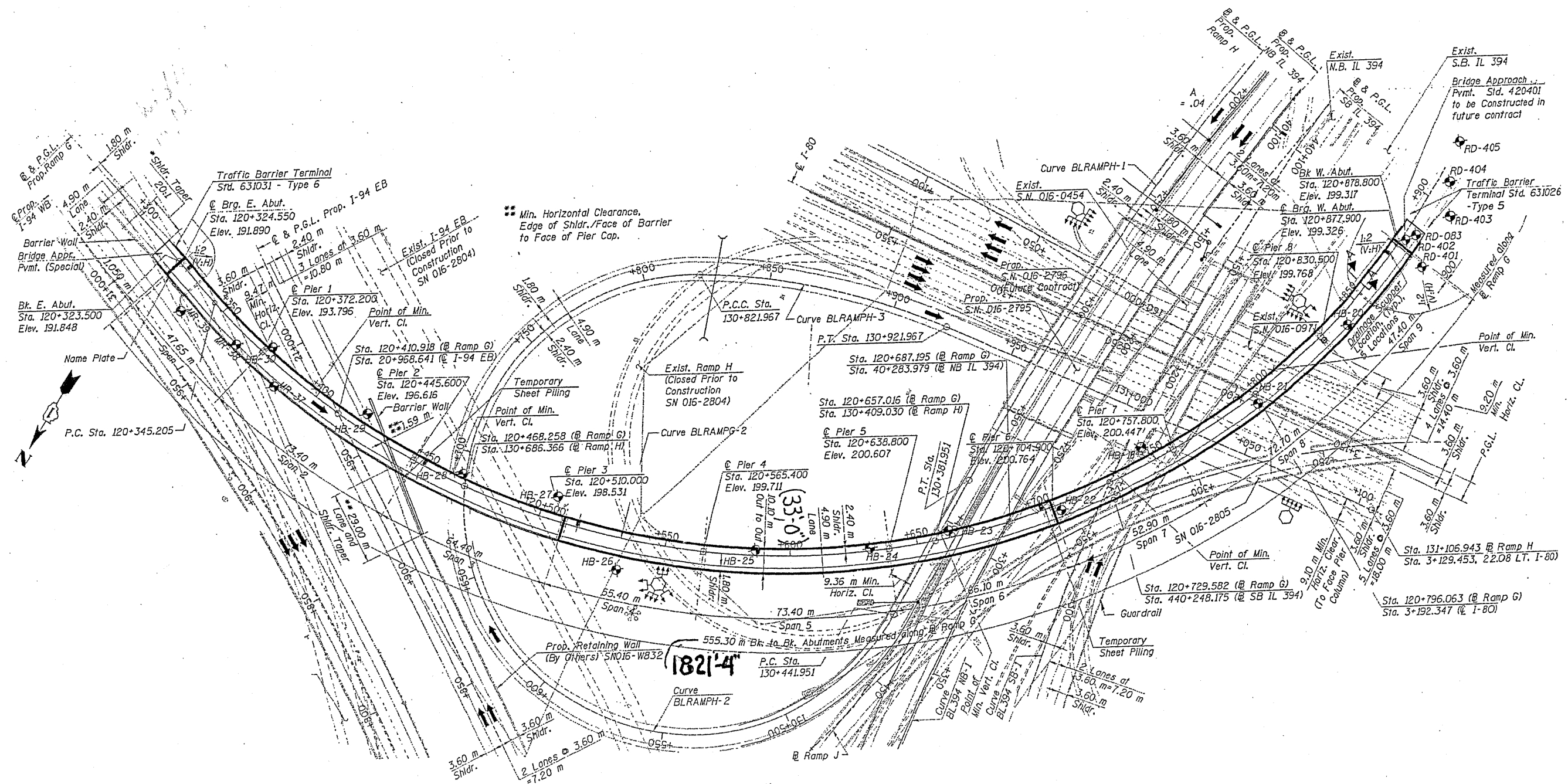
PLAN

FOR INFORMATION ONLY

ILLINOIS DEPARTMENT OF
TRANSPORTATION

EXISTING PLANS
LOCATION 11 (SN 016-2801)

ROUTE	SECTION	COUNTY	TOTAL SHEETS	SHEET NUMBER
VARIOUS	2010-128-I	COOK	27	21



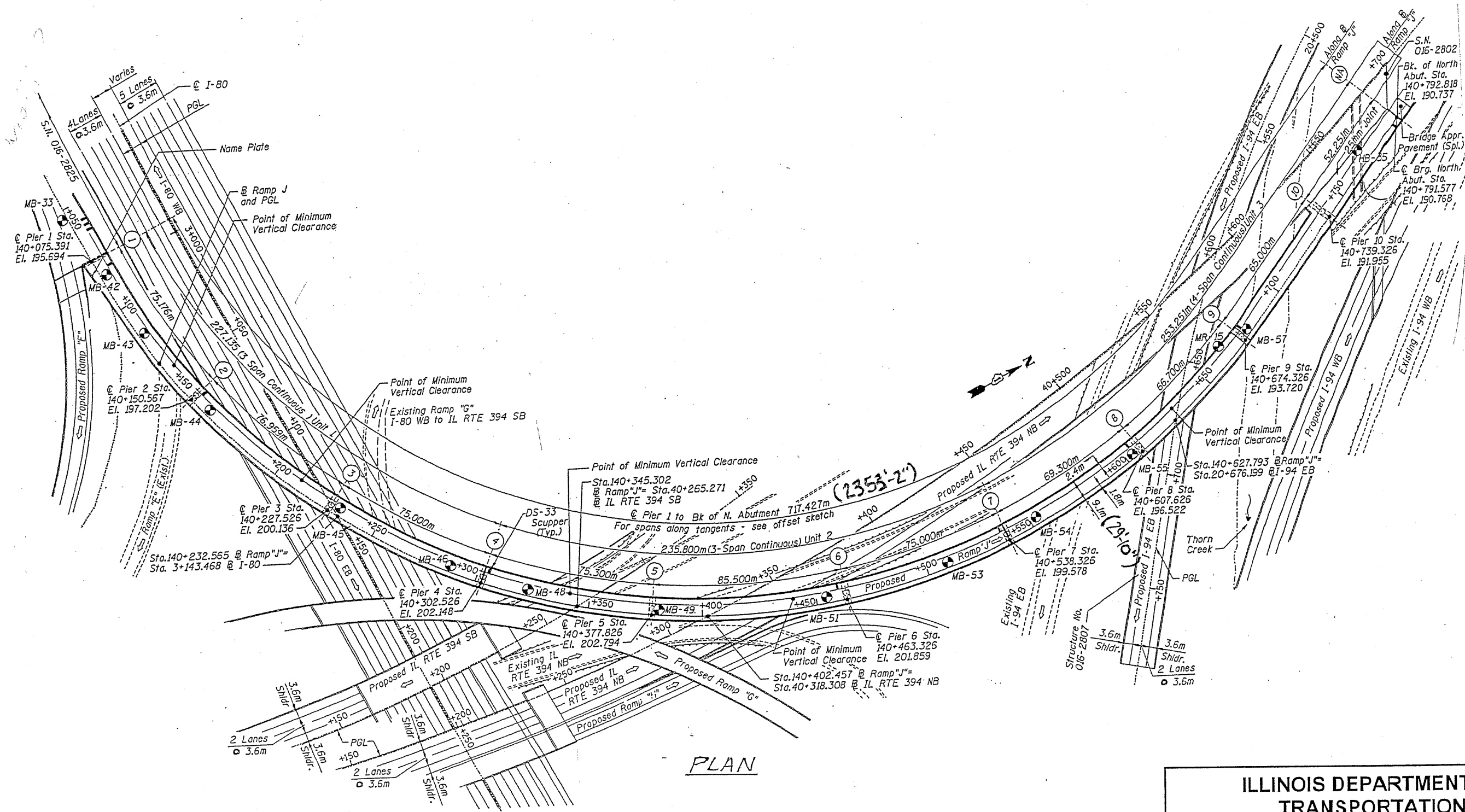
PLAN

FOR INFORMATION ONLY

ILLINOIS DEPARTMENT OF
TRANSPORTATION

EXISTING PLANS
LOCATION 13 (SN 016-2804)

ROUTE	SECTION	COUNTY	TOTAL SHEETS	SHEET NUMBER
VARIOUS	2010-128-1	COOK	27	22



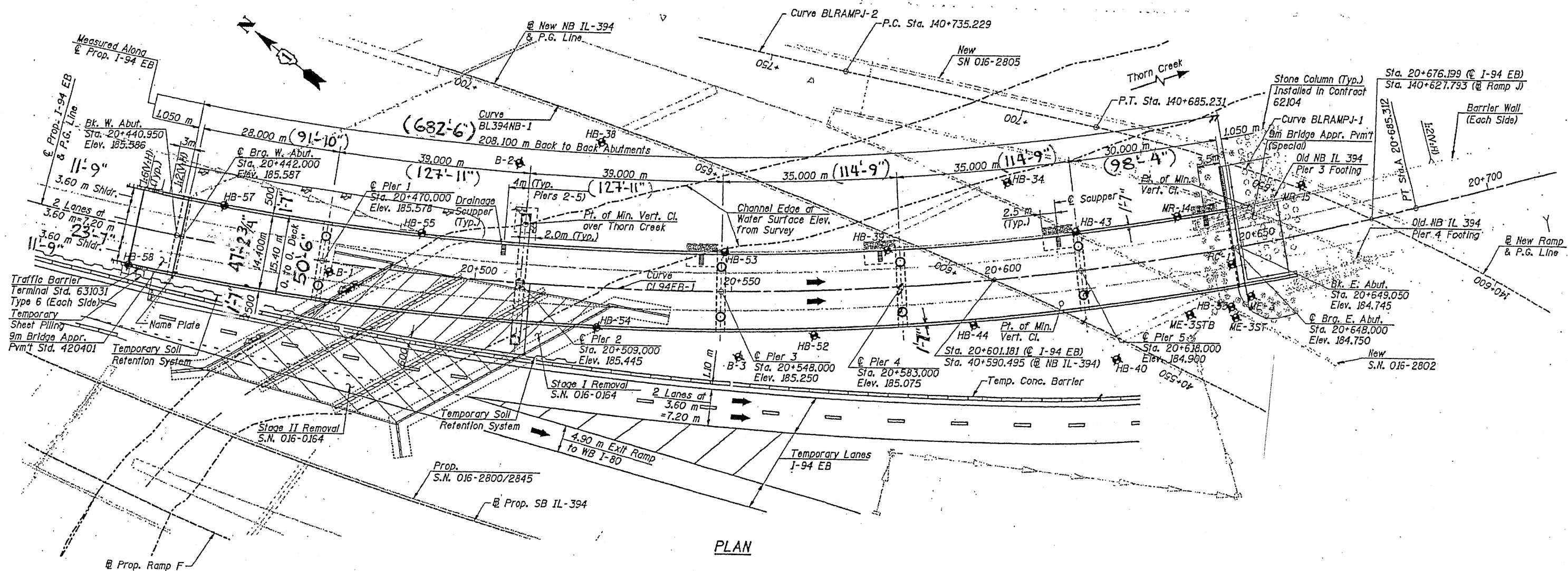
PLAN

FOR INFORMATION ONLY

ILLINOIS DEPARTMENT OF
TRANSPORTATION

EXISTING PLANS
LOCATION 14 (SN 016-2805)

ROUTE	SECTION	COUNTY	TOTAL SHEETS	SHEET NUMBER
VARIOUS	2010-128-1	COOK	27	23



PLAN

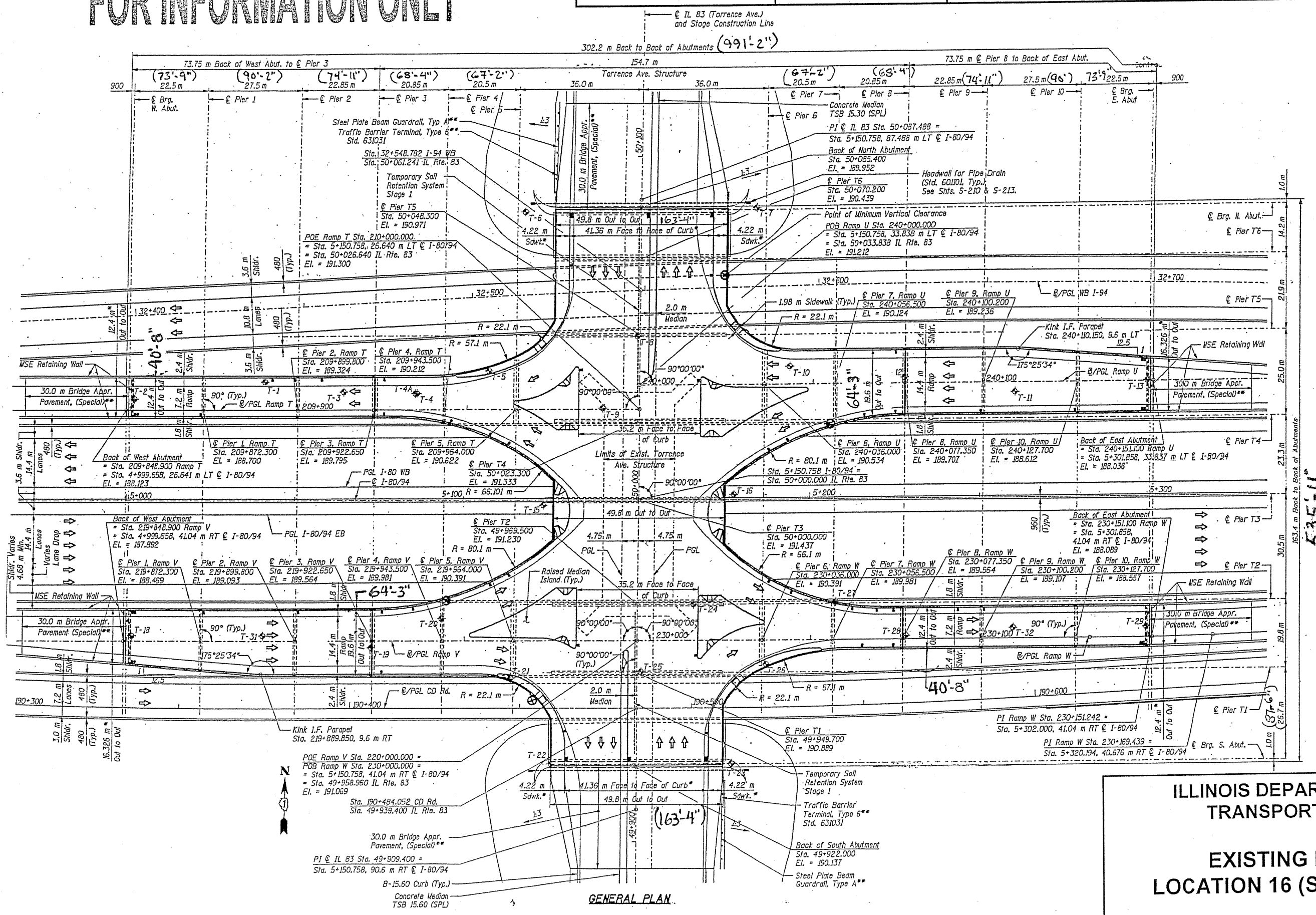
FOR INFORMATION ONLY

ILLINOIS DEPARTMENT OF
TRANSPORTATION

EXISTING PLANS
LOCATION 15 (SN 016-2807)

FOR INFORMATION ONLY

ROUTE	SECTION	COUNTY	TOTAL SHEETS	SHEET NUMBER
VARIOUS	2010-128-I	COOK	27	24

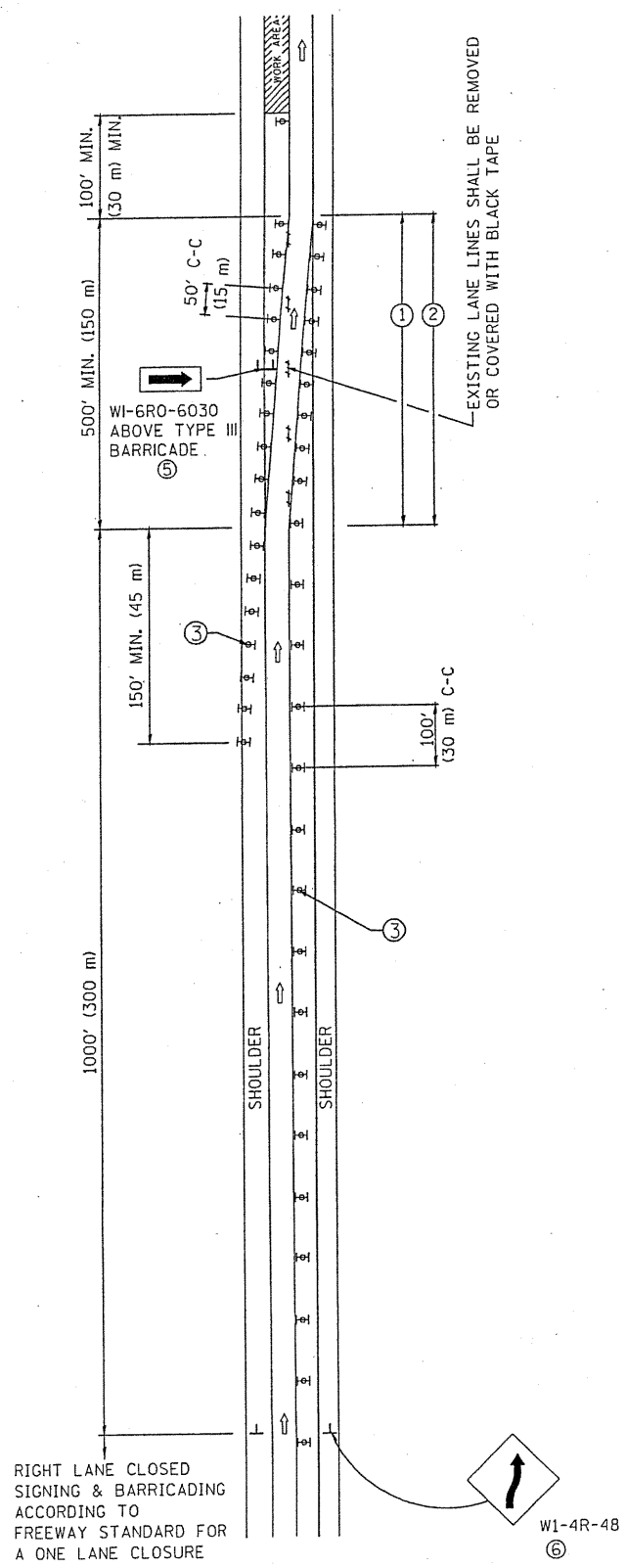


535-11

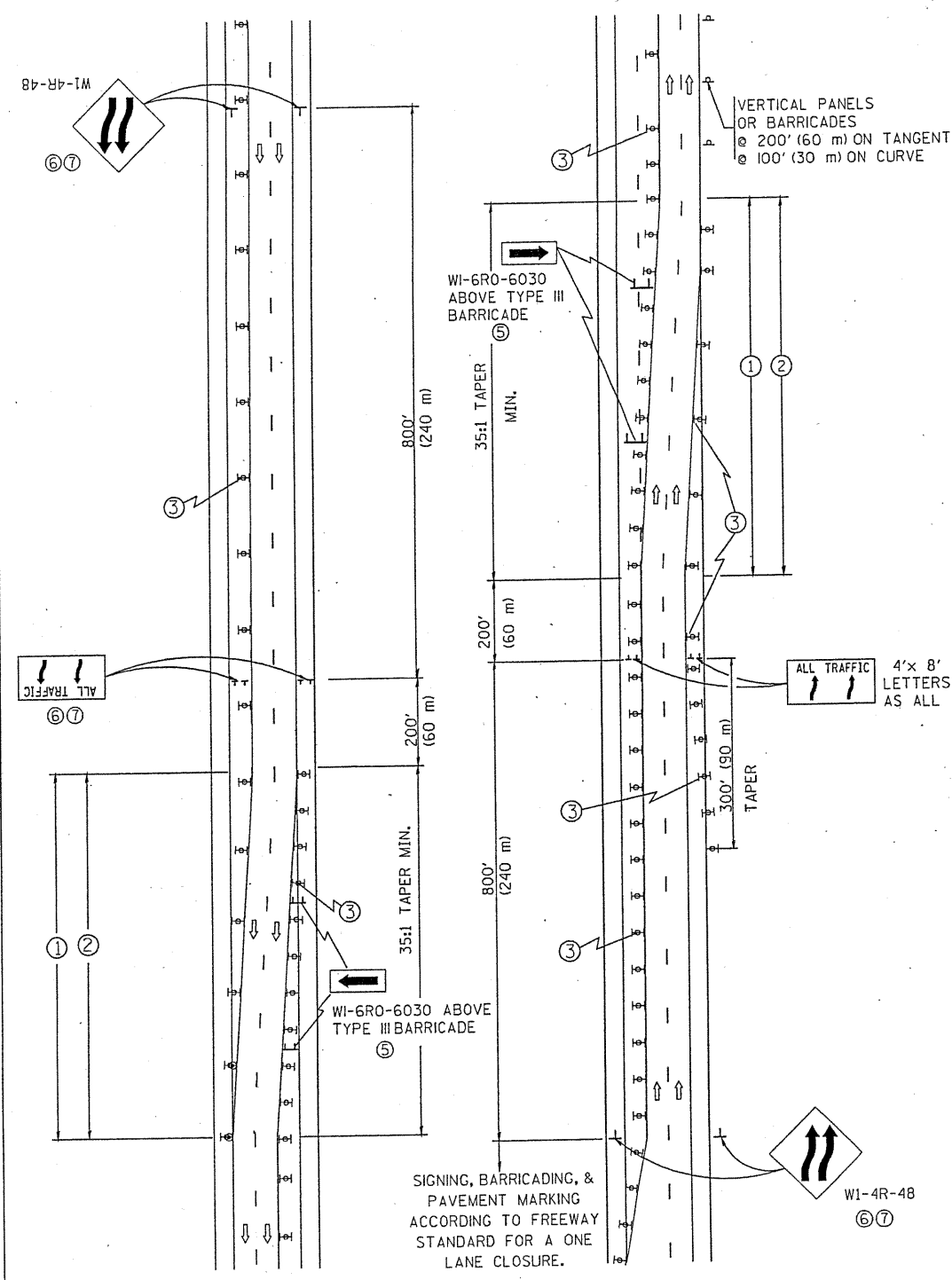
ILLINOIS DEPARTMENT OF
TRANSPORTATION

EXISTING PLANS
LOCATION 16 (SN 016-2793)

SINGLE LANE WEAVE



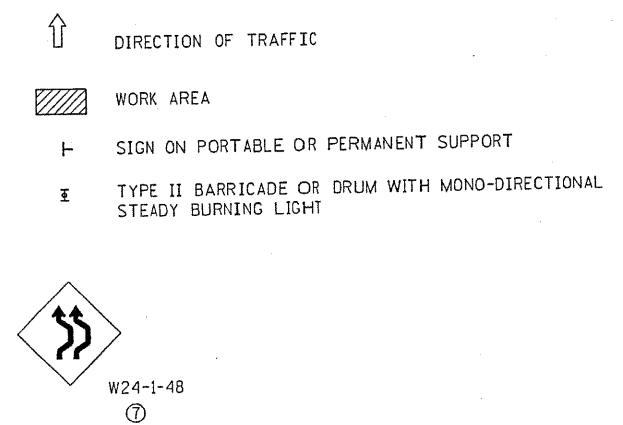
MULTI-LANE WEAVE



GENERAL NOTES

- ① EXISTING CONFLICTING PAVEMENT MARKING LINES SHALL BE REMOVED. PAVEMENT MARKING REMOVAL SHALL NOT BE REQUIRED FOR SINGLE LANE WEAVES UNDER 24 HOURS IN DURATION.
- ② CONTINUOUS REFLECTIVE TEMPORARY PAVEMENT MARKING TAPE SHALL BE PLACED THROUGHOUT THE TAPER AND FOR 300' (90 m) ALONG SIDE THE WORK AREA WHERE THE CLOSURE TIME IS GREATER THAN FOURTEEN DAYS. THE LEFT EDGE LINE SHALL BE YELLOW AND THE RIGHT EDGE LINE SHALL BE WHITE. FOR MULTI-LANE WEAVES LANE LINES SHALL BE 5 INCH, 10'-30' (3 m-9 m) SKIP DASH, WHITE.
- ③ PLASTIC DRUMS WITH STEADY BURN LIGHTS AT 50' (15 m) C-C SPACING IN TAPERS AND 100' (30 m) C-C SPACING IN TANGENTS.
- ④ ALL SIGNS SHALL BE POST MOUNTED IF THE CLOSURE TIME EXCEEDS FOUR DAYS.
- ⑤ IF A TYPE III BARRICADE WITH AN ATTACHED SIGN PANEL WHICH MEETS NCHRP 350 IS NOT AVAILABLE, THE SIGNS MAY BE MOUNTED ON NCHRP 350 TEMPORARY SIGN SUPPORTS. TYPE III BARRICADES MAY BE OMITTED FOR SINGLE-LANE WEAVES UNDER 24-HOURS IN DURATION. W1-6 SIGNS WILL STILL BE REQUIRED. IF THE WIDTH OF OFFSET IS LESS THAN 6' THEN THE TYPE III BARRICADE WITH ATTACHED ARROW SIGN PANEL CAN BE ELIMINATED IN THE TAPER AREAS.
- ⑥ WHEN THE LENGTH OF THE SHIFTED SEGMENT (DISTANCE BETWEEN WEAVE POINTS) IS LESS THAN 1500', DOUBLE REVERSE CURVE SIGNS (W24-1) SHOULD BE USED INSTEAD OF THE REVERSE CURVE (W1-4) SIGNS. ARROWS ON THE 4'x8' "ALL TRAFFIC" SIGNS SHALL BE THE SAME SHAPE.
- ⑦ THE NUMBER OF ARROWS ON THESE SIGNS SHALL MATCH THE NUMBER OF LANES OPEN TO TRAFFIC.

SYMBOLS



ALL DIMENSIONS ARE IN INCHES (MILLIMETERS) UNLESS OTHERWISE SHOWN

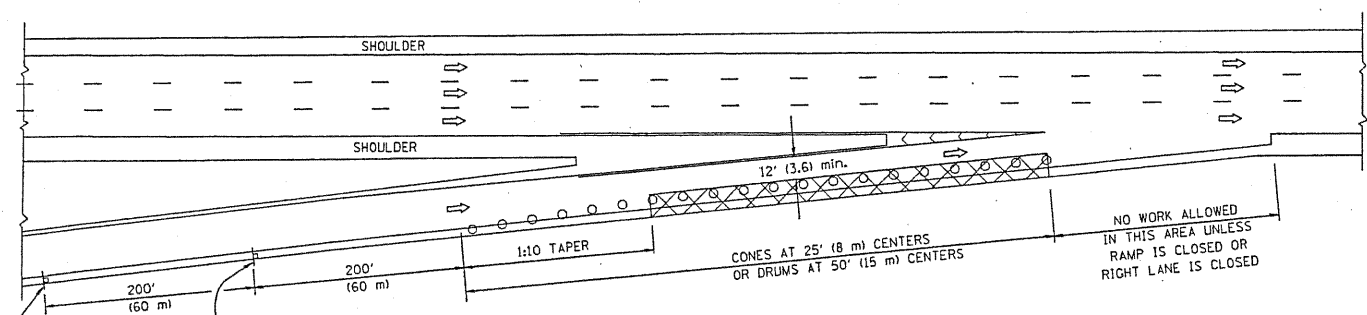
FILE NAME =	USER NAME = lujoo	DESIGNED - DWS	REVISED - JAF 01-03
W:\disto\22x34\1009.dgn		DRAWN -	REVISED - JAF 02-06
	PLOT SCALE = 50,000' / IN.	CHECKED -	REVISED - SPB 01-07
	PLOT DATE = 1/26/2018	DATE - 02-87	REVISED - SPB 12-09

STATE OF ILLINOIS
DEPARTMENT OF TRANSPORTATION

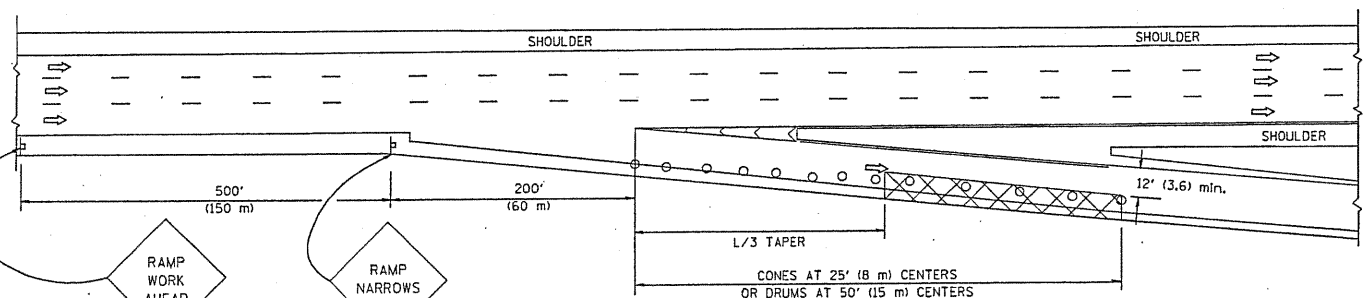
TRAFFIC CONTROL DETAILS FOR FREEWAY SINGLE & MULTI-LANE WEAVE			
SCALE: NONE	SHEET NO. 1 OF 1 SHEETS	STA. TO STA.	

F.A. RTE.	SECTION	COUNTY	TOTAL SHEETS	SHEET NO.
94	2510-128-1	COOK	27	25
TC-09			CONTRACT NO. 601102	
FED. ROAD DIST. NO. 1 [ILLINOIS] FED. AID PROJECT				

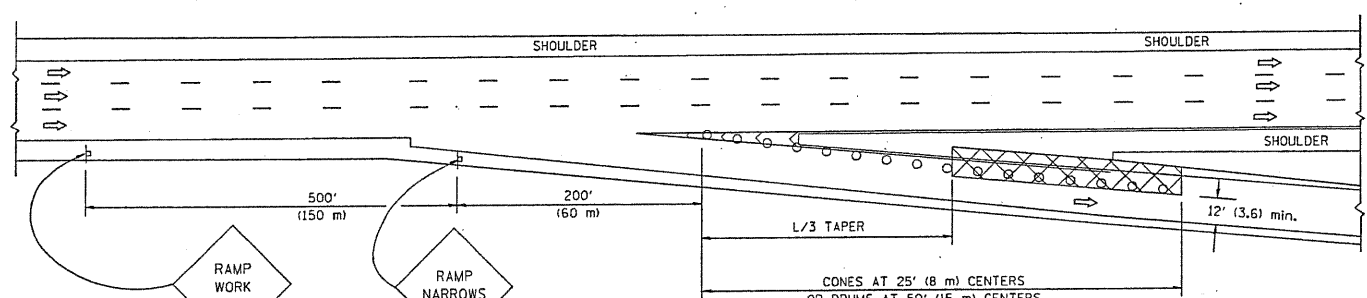
PARTIAL RAMP CLOSURE DETAILS



TYPICAL ENTRANCE RAMP



TYPICAL EXIT RAMP



TYPICAL EXIT RAMP

SYMBOLS

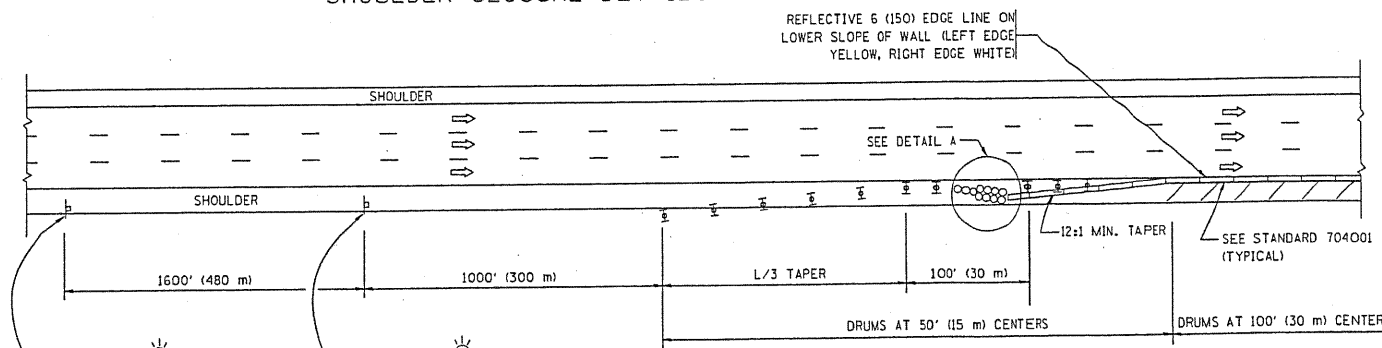
- ACTIVE WORK AREA
- SIGN ON PORTABLE OR PERMANENT SUPPORT
- FLAGGER WITH CONTROL SIGN
- TYPE II BARRICADE, DRUM OR VERTICAL BARRICADE WITH STEADY BURN MONO-DIRECTIONAL LIGHT
- CONE, DRUM OR BARRICADE

GENERAL NOTES

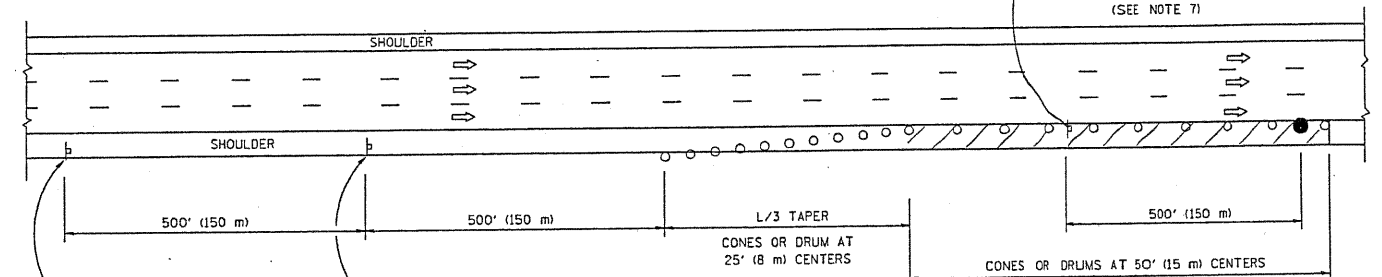
1. THE "L" DISTANCE EQUALS:

SPEED LIMIT	FORMULAS
45 mph (80 km/h)	METRIC ENGLISH
OR GREATER:	$L=0.65(W/S)$ $L=(W/S)$
	W = WIDTH OF OFFSET IN FEET (METERS)
	S = NORMAL POSTED SPEED MPH (KM/H)
2. PLASTIC DRUMS WITH HIGH PERFORMANCE REFLECTIVE SHEETING AND STEADY BURNING LIGHTS ARE REQUIRED FOR ALL NIGHTTIME CLOSURES.
3. ALL SIGNS SHALL BE POST MOUNTED IF THE CLOSURE TIME EXCEEDS FOUR DAYS.
4. FLASHING LIGHTS SHALL BE USED DURING THE HOURS OF DARKNESS AND SHALL BE INSTALLED ABOVE THE FIRST TWO SETS OF SIGNS.

SHOULDER CLOSURE DETAILS



PERMANENT SHOULDER CLOSURE



DAYTIME SHOULDER CLOSURE

THIS DETAIL IS USED WHERE:
1. VEHICLES, EQUIPMENT, WORKERS OR THEIR ACTIVITIES ENCRDACH IN AN AREA CLOSER THAN 15' (4.5 m) TO THE EDGE OF PAVEMENT FOR A PERIOD IN EXCESS OF 15 MINUTES.

ARRAY DESIGN PER MANUFACTURER TO BE NCHRP 350 COMPLIANT.

DETAIL "A"
IMPACT ATTENUATOR, TEMPORARY
(SEE NOTE 5)

ALL DIMENSIONS ARE IN INCHES (MILLIMETERS) UNLESS OTHERWISE SHOWN.

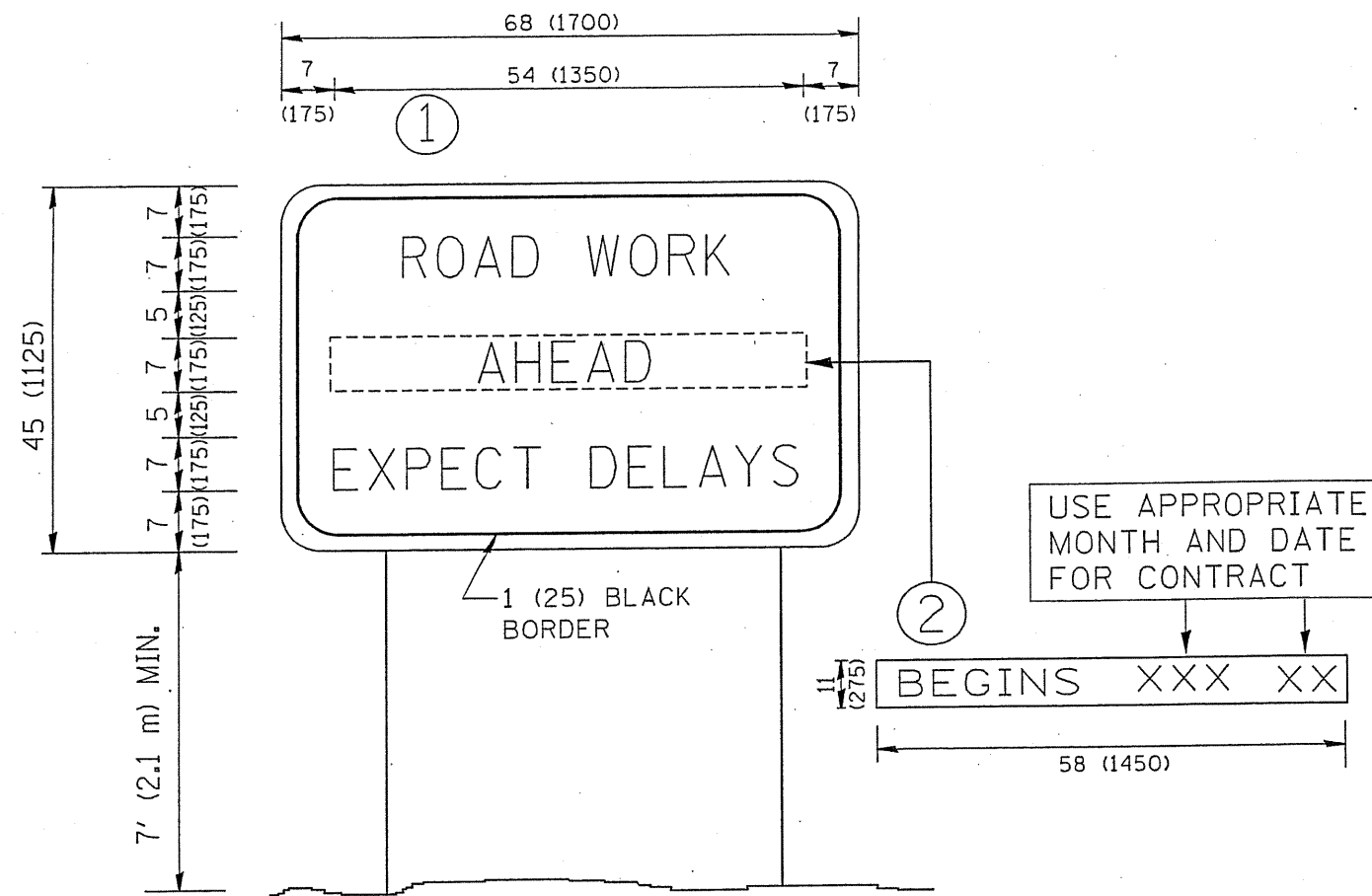
FILE NAME = W:\diststd\22x34\vol17.dgn

USER NAME = lsgsa	DESIGNED -	REVISED - 04-03
	DRAWN - D.W.S.	REVISED - J.A.F. 12-06
PLOT SCALE = 50.0000' / IN.	CHECKED -	REVISED - S.P.B. 01-07
PLOT DATE = 1/26/2010	DATE - 11-96	REVISED - S.P.B. 12-09

STATE OF ILLINOIS
DEPARTMENT OF TRANSPORTATION

TRAFFIC CONTROL DETAILS FOR FREEWAY
SHOULDER CLOSURES AND PARTIAL RAMP CLOSURES
SCALE: NONE SHEET NO. 1 OF 1 SHEETS STA. TO STA.

F.A. RTE.	SECTION	COUNTY	TOTAL SHEETS	SHEET NO.
94	2010-128-1	COOK	27	26
TC-17		CONTRACT NO. 60NE2		
FED. ROAD DIST. NO. 1 [ILLINOIS] FED. AID PROJECT				



NOTES:

1. USE BLACK LETTERING ON ORANGE BACKGROUND.
2. ERECT SIGNS IN ADVANCE OF THE LOCATION FOR THE "ROAD CONSTRUCTION AHEAD" SIGN AT LOCATIONS AS DIRECTED BY THE ENGINEER.
3. ERECT SIGN ① WITH INSTALLED PANEL ② ONE WEEK PRIOR TO THE START OF CONSTRUCTION.
4. REMOVE PANEL ② SOON AFTER THE START OF CONSTRUCTION.
5. SEE SPECIAL PROVISION FOR "TEMPORARY INFORMATION SIGNING" FOR ADDITIONAL INFORMATION.
6. ONE SIGN ASSEMBLY EQUALS 25.70 SQ. FT. (2.3 SQ. M.)
7. SHALL BE PAID FOR AS TEMPORARY INFORMATION SIGNING.

ALL DIMENSIONS ARE IN INCHES (MILLIMETERS) UNLESS OTHERWISE SHOWN.

FILE NAME = W:\diststd\22x34\tc22.dgn

USER NAME = goglienobt	DESIGNED -	REVISED - R. MIRS 09-15-97
	DRAWN -	REVISED - R. MIRS 12-11-97
PLOT SCALE = 50,000 ' / IN.	CHECKED -	REVISED - T. RAMMACHER 02-02-99
PLOT DATE = 1/4/2008	DATE -	REVISED - C. JUCLIS 01-31-07

**STATE OF ILLINOIS
DEPARTMENT OF TRANSPORTATION**

**ARTERIAL ROAD
INFORMATION SIGN**

SCALE: NONE SHEET NO. 1 OF 1 SHEETS STA. TO STA.

F.A. RTE.	SECTION	COUNTY	TOTAL SHEETS	SHEET NO.
94	2010-128-1	COOK	27	27
TC-22			CONTRACT NO. 09QNG2	
FED. ROAD DIST. NO. 1 ILLINOIS FED. AID PROJECT				