

PART OF THE FRACTIONAL SW 1/4 OF SEC. 27 AND PART OF THE SE 1/4 OF SEC. 28, TWP. 43 N., R. 8 E. OF THE 3RD. P.M., IN McHENRY COUNTY, ILLINOIS.

LEGEND

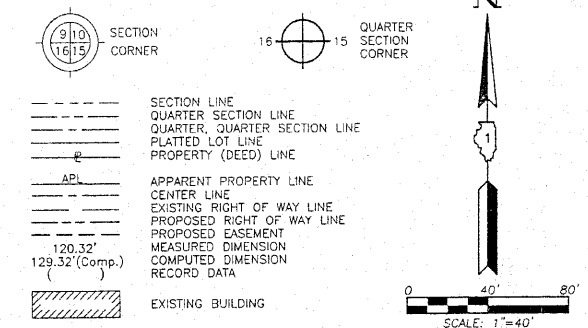


Table with 3 columns: Parcel, Document No., Date Recorded. Lists parcels 1FH0019, 1FH0020, 1FH0021 and their respective documents and recording dates.

Table with 3 columns: Point Number, Tie to point, Tie Distance (feet). Shows tie points T1, T2, T3 for points 1 and 2.

Bearings are referenced to the Illinois Coordinate System NAD83 (1997) East Zone of Found Geodetic Survey Control Monuments "MCH31 1A". P.I.D. AJ2855 and "Algonquin", P.I.D. AJ2945. THIS IS TO CERTIFY THAT WE, JORGENSEN & ASSOCIATES, INC., AN ILLINOIS PROFESSIONAL DESIGN FIRM LAND SURVEYING CORPORATION, NUMBER 184-2771, HAVE SURVEYED THE PLAT OF HIGHWAYS SHOWN HERON BETWEEN SECTION 27, TOWNSHIP 43N., RANGE 8E. AND SECTION 28, TOWNSHIP 43N., RANGE 8E. OF THE THIRD PRINCIPAL MERIDIAN, McHENRY COUNTY, THAT THE SURVEY IS TRUE AND COMPLETE AS SHOWN TO THE BEST OF MY KNOWLEDGE AND BELIEF, THAT THE PLAT CORRECTLY REPRESENTS SAID SURVEY, THAT ALL MONUMENTS FOUND AND ESTABLISHED ARE OF PERMANENT QUALITY AND OCCUPY THE POSITIONS SHOWN HEREON AND THAT THE MONUMENTS ARE SUFFICIENT TO ENABLE THE SURVEY TO BE RE-TRACED. MADE FOR THE DEPARTMENT OF TRANSPORTATION, STATE OF ILLINOIS. DATED AT LAKE VILLA, ILLINOIS THIS 16th DAY OF May 2010 A.D.



RECEIVED SEP 15 2010 PLATS & LEGALS

COORDINATE TABLE with columns: STATION, OFFSET, NORTH, EAST. Lists stationing points and their corresponding coordinates.

COORDINATE TABLE with columns: STATION, OFFSET, NORTH, EAST. Lists stationing points and their corresponding coordinates.

Table with 8 columns: PARCEL NUMBER, OWNER, TOTAL HOLDINGS ACRES, PART TAKEN ACRES, AREA IN EXISTING R.O.W. ACRES, REMAINDER AREA ACRES, EASEMENT AREA ACRES, EASEMENT PURPOSE, PERMANENT INDEX NUMBER, PROPERTY ACQUIRED BY. Lists parcels 1FH0019, 1FH0020, 1FH0021-A, 1FH0021-B, 1FH0021.E-A, 1FH0021.E-B, 1FH0021.E-C, 1FH0021.E-D, 1FH0021.E-E.

PLAT OF HIGHWAYS STATE OF ILLINOIS DEPARTMENT OF TRANSPORTATION F.A.P. 336 (ILLINOIS ROUTE 31 BYPASS) SECTION 96-00209-00-PV McHENRY COUNTY PROJECT JOB NO. R-91-022-03 STATION 56+00 TO STATION 61+00 STATION 132+00 TO STATION 140+00 SCALE: 1"=40' SHEET 16 OF 37 BUREAU OF LAND ACQUISITION 201 WEST CENTER COURT SCHAUMBURG, ILLINOIS 60196 AS. DOCUMENT NO.

FOR INFORMATION ONLY

SEE SHEET 15

SEE SHEET 11

SEE SHEET 11

SEE SHEET 18

See Sheet 32 for Total Holdings Parcel 1FH0021-A & B & 1FH0021.E.-A thru E

Proposed Pavement Algonquin Road Curve #8

Proposed Ramp "A" Curve #1

See Sheet 15 for Parcel 1FH0018

See Sheet 11 for Parcel 1FH0014

See Sheet 11 for Parcel 1FH0012

See Sheet 11 for Parcel 1FH0012