

F.A. RTE.	SECTION	COUNTY	TOTAL SHEETS	SHEET NO.
2578	2010-150-DTR	DU PAGE	100	1
		ILLINOIS	CONTRACT NO. 60N23	

STATE OF ILLINOIS
DEPARTMENT OF TRANSPORTATION
DIVISION OF HIGHWAYS

PLANS FOR PROPOSED HIGHWAY

FAP ROUTE 870 / FAU ROUTE 2578 (ILLINOIS ROUTE 53)
ARMY TRAIL ROAD TO ELGIN O'HARE EXPRESSWAY
ADVANCE WORK - TREE REMOVAL

SECTION 2010-150-DTR
PROJECT NO. - -
DUPAGE COUNTY
C-91-272-11

FOR INDEX OF SHEETS, SEE SHEET NO. 2

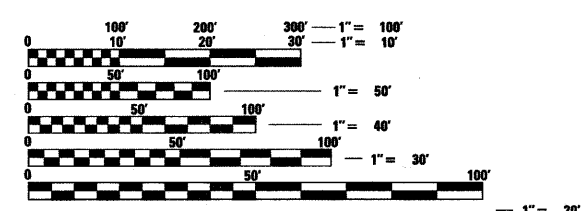
HIGHWAY CLASSIFICATION
PRINCIPAL ARTERIAL ROUTE :
(FROM ARMY TRAIL ROAD TO LAKE STREET)
SUBURBAN MINOR ARTERIAL :
(FROM LAKE STREET TO THE ELGIN-O'HARE EXPRESSWAY)

DESIGN DESIGNATION
3500(20) ARTERIAL 14.56 (PCC-20)

TRAFFIC DATA
IL RTE 53
2002 ADT = 14,200 - 28,800
2020 ADT = 26,000 - 35,000

POSTED SPEED LIMIT=40 MPH
DESIGN SPEED=45 MPH

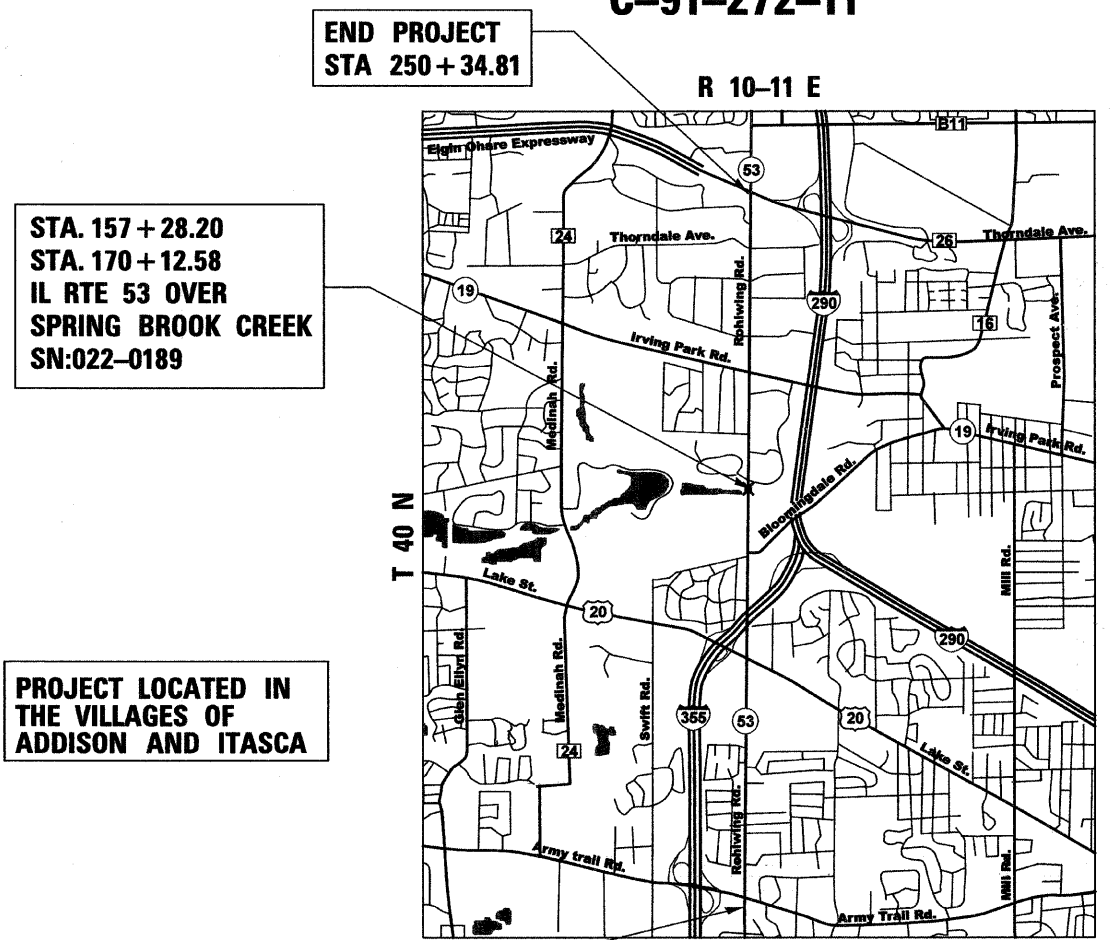
PROJECT DESCRIPTION
THE PROPOSED IMPROVEMENT CONSISTS OF TREE REMOVAL IN ADVANCE OF A ROADWAY RECONSTRUCTION PROJECT



FULL SIZE PLANS HAVE BEEN PREPARED USING STANDARD ENGINEERING SCALES. REDUCED SIZED PLANS WILL NOT CONFORM TO STANDARD SCALES. IN MAKING MEASUREMENTS ON REDUCED PLANS, THE ABOVE SCALES MAY BE USED.

J.U.L.I.E.
JOINT UTILITY LOCATION INFORMATION FOR EXCAVATION
1-800-892-0123 OR 811

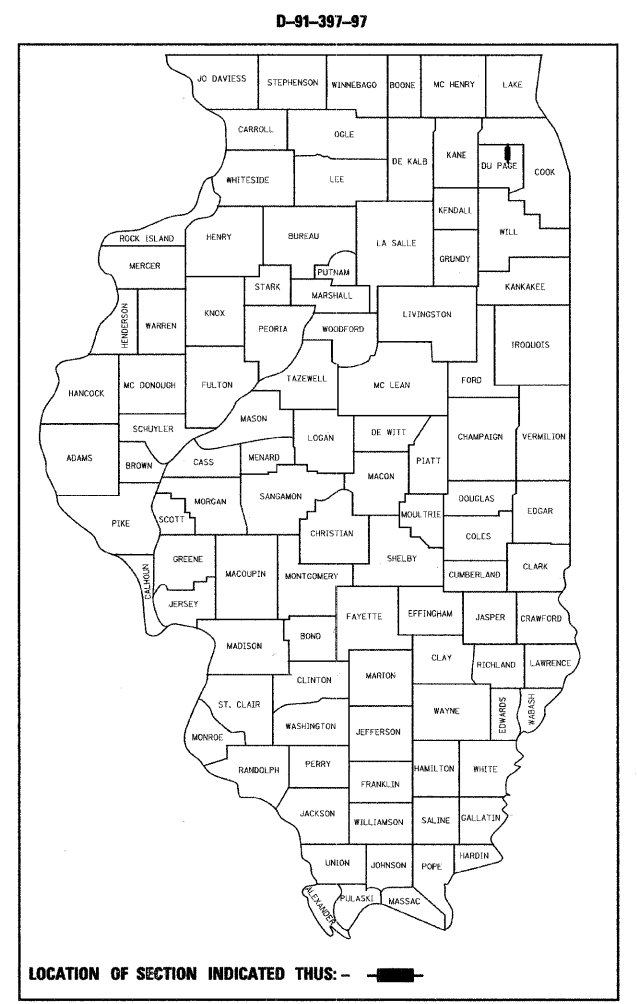
DISTRICT 1 - DESIGN/CONSULTANT SERVICES SECTION/ RAJENDRA SHAH (847) 705-4555



PROJECT LOCATED IN THE VILLAGES OF ADDISON AND ITASCA

LOCATION MAP
SCALE
1" = 2500'

GROSS LENGTH ILLINOIS RTE 53 = 21,468.25 FEET = 4.1 MILES
NET LENGTH ILLINOIS RTE 53 = 21,468.25 FEET = 4.1 MILES



PATRICK ENGINEERING INC.
 4970 VARSITY DRIVE
 Lisle, IL 60532
 patrickengineering.com

STATE OF ILLINOIS
 DEPARTMENT OF TRANSPORTATION
 DIVISION OF HIGHWAYS

SUBMITTED November 9, 2010

Diana M. O'Keefe
 DEPUTY DIRECTOR OF HIGHWAYS, REGION ENGINEER

December 10, 2010
Scott E. Stitt P.E.
 acting ENGINEER OF DESIGN AND ENVIRONMENT

December 10, 2010
Christine M. Reed
 DIRECTOR OF HIGHWAYS, CHIEF ENGINEER

PRINTED BY THE AUTHORITY OF THE STATE OF ILLINOIS

CONTRACT NO. 60N23