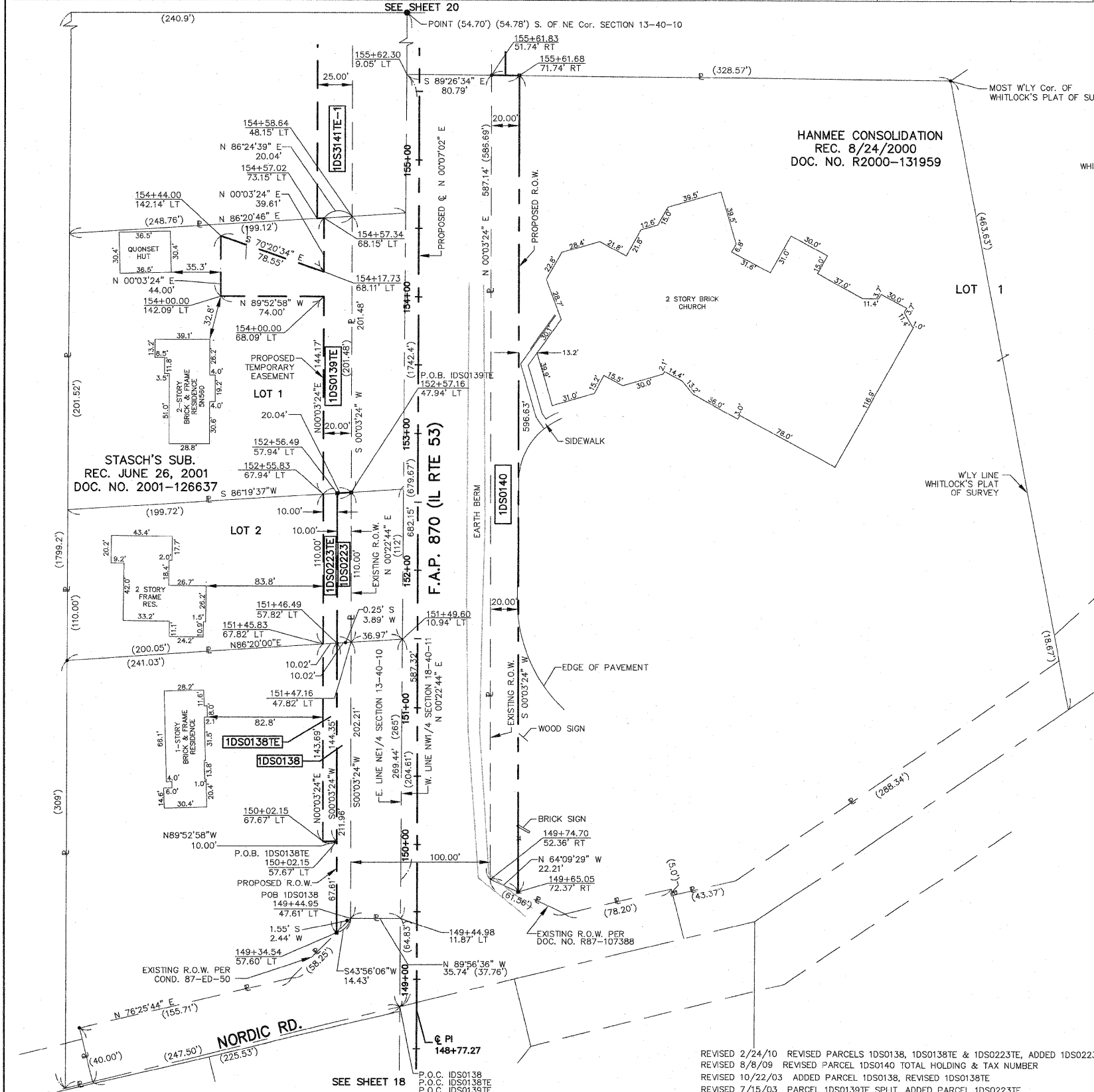


PART OF SECTION 13, TWP 40 NORTH, RANGE 10 EAST & SECTION 18, TWP 40 NORTH, RANGE 11 EAST OF THE THIRD PRINCIPAL MERIDIAN, DUPAGE COUNTY, ILLINOIS. 80 of 100

Table with 10 columns: PARCEL NUMBER, OWNER, TOTAL HOLDINGS, AREA TAKEN, PREVIOUS DEDICATION, REMAINDER, AREA OF EASEMENT, PURPOSE OF EASEMENT, TAX NUMBER, PROPERTY ACQUIRED BY. Rows include parcels 1DS0138, 1DS0138TE, 1DS0139TE, 1DS0140, 1DS0141, 1DS0141TE-1, 1DS0141TE-2, 1DS0223, and 1DS0223TE.



LEGEND, SECTION CORNER, QUARTER SECTION CORNER, STATE OF ILLINOIS, COUNTY OF KANE, RECEIVED FEB 25 2010, PLATS & LEGALS, HAMPTON, LENZINI AND RENWICK, INC., BUREAU OF LAND ACQUISITION, 201 WEST CENTER COURT, SCHAMBURG, ILLINOIS 60186.