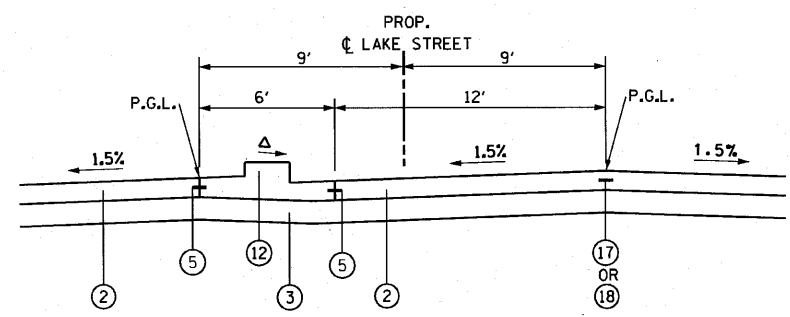


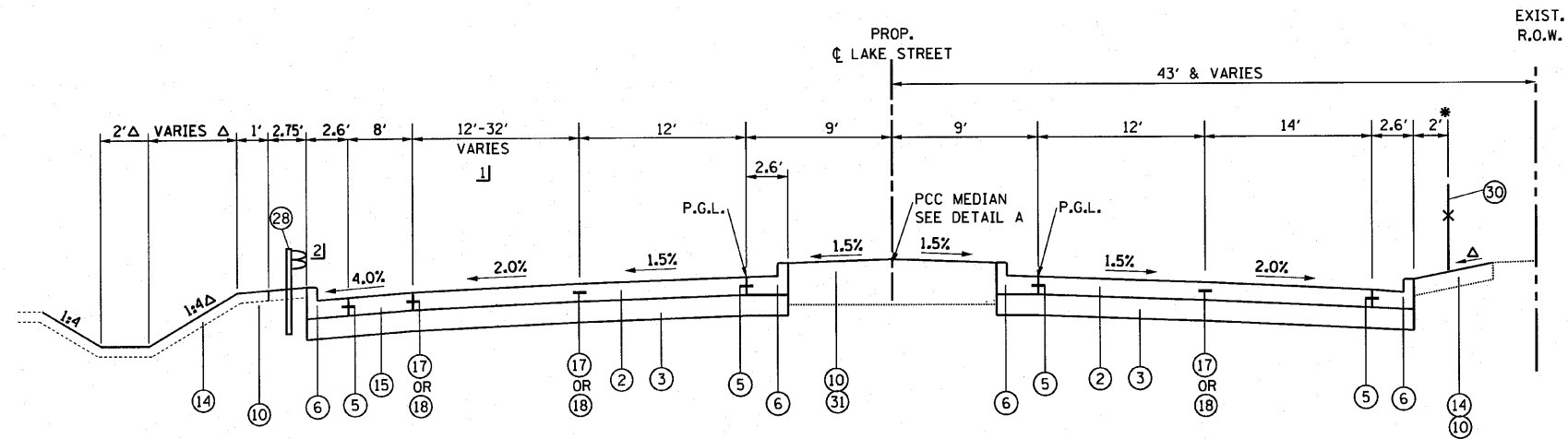
EXISTING TYPICAL SECTION 4
 U.S. ROUTE 20 (LAKE STREET)
 STA. 378+00.00 TO STA. 385+11.00

- EXISTING LEGEND**
- (A) GROUND LINE
 - (C) P.C.C. PAVEMENT, VARIES 8"-10"
 - (G) STABILIZED SUB-BASE, 4"-6" AND VARIES
 - (I) HOT-MIX ASPHALT MEDIAN SURFACE
 - (J) HOT-MIX ASPHALT SHOULDER
 - (M) COMBINATION CONCRETE CURB AND GUTTER, TYPE B-6.24
 - (O) GUARDRAIL
 - (P) CHAIN LINK FENCE



DETAIL A
 U.S. ROUTE 20 (LAKE STREET)
 STA. 382+44.88 TO STA. 384+60.00

- PROPOSED LEGEND**
- (2) PORTLAND CEMENT CONCRETE PAVEMENT, 10 1/4" (JOINTED)
 - (3) AGGREGATE SUBGRADE, 12"
 - (5) #6 TIE BARS, 24" LONG, EPOXY COATED, DEFORMED, 24" O.C.
 - (6) COMBINATION CONCRETE CURB AND GUTTER, TYPE B-6.24
 - (10) SEEDING, CLASS 2A
 - (12) CONCRETE MEDIAN, TYPE SB-6.24
 - (14) TOPSOIL, FURNISH AND PLACE, 4"
 - (15) PORTLAND CEMENT CONCRETE SHOULDERS, 10 1/4"
 - (17) LONGITUDINAL CONSTRUCTION JOINT WITH #6 TIE BARS, 24" LONG, EPOXY COATED, DEFORMED, 24" O.C., DRILL & GROUT
 - (18) LONGITUDINAL SAWS JOINT WITH #6 TIE BARS, 30" LONG, EPOXY COATED, DEFORMED, 30" O.C.
 - (28) STEEL PLATE BEAM GUARD RAIL, TYPE A
 - (30) ORNAMENTAL FENCE
 - (31) TOPSOIL, FURNISH AND PLACE, 24"

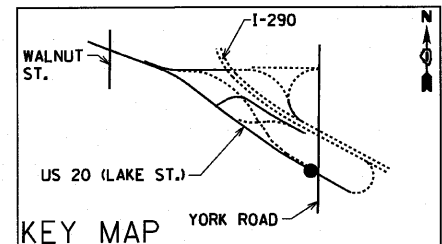


PROPOSED TYPICAL SECTION 6
 U.S. ROUTE 20 (LAKE STREET)
 STA. 380+36.16 TO STA. 384+60.00

- Δ SLOPE WIDTH VARIES. SEE CROSS SECTIONS
- 1) LANE WIDTH TAPERS 12' AT STA. 380+35 TO 32' AT STA. 383+35.
- 2) DEPRESSED CURB TO BE PAID FOR AS :
 (6) COMBINATION CONCRETE CURB AND GUTTER, TYPE B-6.24

*LOCATE FENCE 1' FROM RIGHT OF WAY LINE
 STA 384+26.00 TO STA 384+60.00

NOTE:
 COST OF ALL BOXED ITEMS IS INCLUDED IN THE
 PORTLAND CEMENT CONCRETE PAVEMENT, 10 1/4" (JOINTED) PAY ITEM.



FILE NAME =	USER NAME = mrcmpfer	DESIGNED -	REVISED -	STATE OF ILLINOIS DEPARTMENT OF TRANSPORTATION	U.S. ROUTE 20 (LAKE STREET) PROPOSED TYPICAL SECTION	F.A.J.U. RTE.	SECTION	COUNTY	TOTAL SHEETS	SHEET NO.	
FILEL	PLOT SCALE = 40,0000' / IN.	DRAWN - PRH	REVISED -			3537	(4Y & 22-3R-2)	DUPAGE	284	26	
	PLOT DATE = 6/4/2010	CHECKED - SRG	REVISED -			CONTRACT NO. 62093					
		DATE - 1/18/10	REVISED -			FED. ROAD DIST. NO. [ILLINOIS] FED. AID PROJECT					