

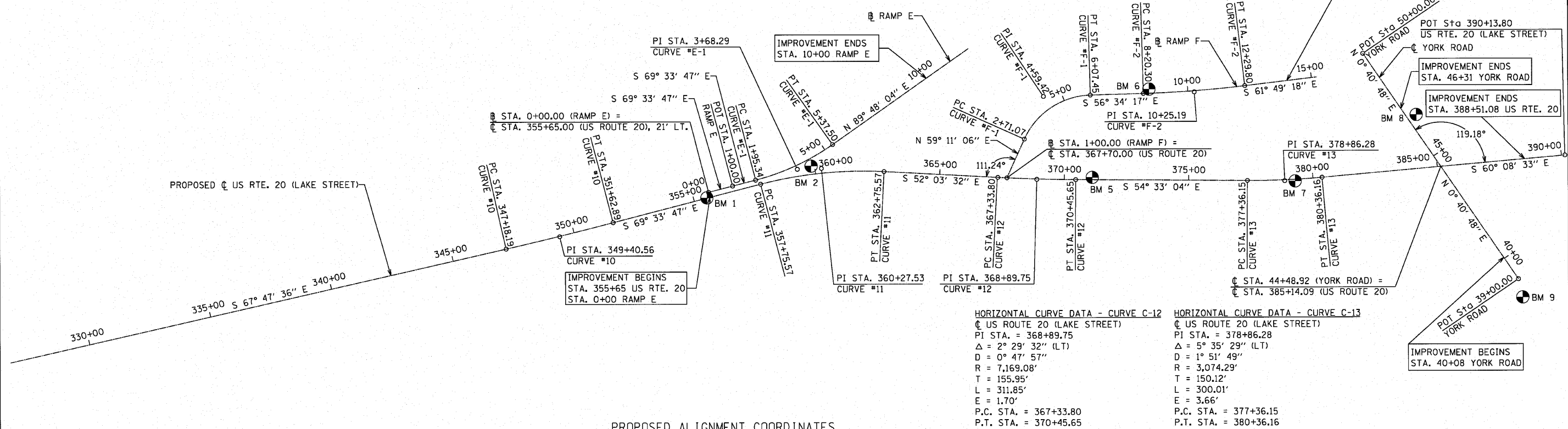
HORIZONTAL CURVE DATA - CURVE C-10
 @ US ROUTE 20 (LAKE STREET)
 PI STA. = 349+40.56
 Δ = 1° 46' 11" (LT)
 D = 0° 23' 53"
 R = 14,397.18'
 T = 222.37'
 L = 444.70'
 E = 1.72'
 P.C. STA. = 347+18.19
 P.T. STA. = 351+62.89

HORIZONTAL CURVE DATA - CURVE C-11
 @ US ROUTE 20 (LAKE STREET)
 PI STA. = 360+27.53
 Δ = 17° 30' 15" (RT)
 D = 3° 30' 03"
 R = 1,636.62'
 T = 251.96'
 L = 500.00'
 E = 19.28'
 P.C. STA. = 357+75.57
 P.T. STA. = 362+75.57

HORIZONTAL CURVE DATA - CURVE E-1
 @ RAMP E
 PI STA. = 3+68.29
 Δ = 20° 38' 10" (LT)
 D = 6° 01' 52"
 R = 950.00'
 T = 172.95'
 L = 342.16'
 E = 15.62'
 P.C. STA. = 1+95.34
 P.T. STA. = 5+37.50

HORIZONTAL CURVE DATA - CURVE F-1
 @ RAMP F
 PI STA. = 4+59.42
 Δ = 64° 14' 37" (RT)
 D = 19° 05' 55"
 R = 300.00'
 T = 188.35'
 L = 336.38'
 E = 54.22'
 P.C. STA. = 2+71.07
 P.T. STA. = 6+07.45

HORIZONTAL CURVE DATA - CURVE F-2
 @ RAMP F
 PI STA. = 10+25.19
 Δ = 5° 15' 01" (LT)
 D = 1° 16' 55"
 R = 4,469.00'
 T = 204.90'
 L = 409.51'
 E = 4.69'
 P.C. STA. = 8+20.30
 P.T. STA. = 12+29.80



PROPOSED ALIGNMENT COORDINATES

		STATION	NORTHING	EASTING
US ROUTE 20	PC #10	347+18.19	1,912,964.53	1,088,230.51
	PI #10	349+40.56	1,912,880.48	1,088,436.39
	PT #10	351+62.89	1,912,802.84	1,088,644.76
	POT	355+65.00	1,912,662.43	1,089,021.56
	PC #11	357+75.57	1,912,588.90	1,089,218.88
	PI #11	360+27.53	1,912,500.92	1,089,454.98
	PT #11	362+75.57	1,912,346.00	1,089,653.69
	PC #12	367+33.80	1,912,064.26	1,090,015.07
	PI #12	368+89.75	1,911,968.37	1,090,138.05
	PT #12	370+45.65	1,911,877.93	1,090,265.10
	PC #13	377+36.15	1,911,477.45	1,090,827.60
	PI #13	378+86.28	1,911,390.38	1,090,949.90
	PT #13	380+36.16	1,911,315.64	1,091,080.10
POT	390+13.80	1,910,828.93	1,091,927.97	
YORK ROAD	POT	39+00.00	1,910,528.83	1,091,488.08
	POT	44+48.92	1,911,077.71	1,091,494.59
	POT	50+00.00	1,911,628.75	1,091,501.13
RAMP E	POT	0+00.00	1,912,682.10	1,089,028.89
	POT	1+00.00	1,912,647.19	1,089,122.60
	PC #E-1	1+95.34	1,912,613.90	1,089,211.94
	PI #E-1	3+68.29	1,912,553.51	1,089,374.00
	PT #E-1	5+37.50	1,912,554.11	1,089,546.95
RAMP F	POT	1+00.00	1,912,042.07	1,090,043.67
	PC #F-1	2+71.07	1,912,129.71	1,090,190.59
	PI #F-1	4+59.42	1,912,226.19	1,090,352.35
	PT #F-1	6+07.45	1,912,122.43	1,090,509.54
	PC #F-2	8+20.30	1,912,005.17	1,090,687.18
	PI #F-2	10+25.19	1,911,892.30	1,090,858.18
	PT #F-2	12+29.80	1,911,795.54	1,091,038.79

HORIZONTAL CURVE DATA - CURVE C-12
 @ US ROUTE 20 (LAKE STREET)
 PI STA. = 368+89.75
 Δ = 2° 29' 32" (LT)
 D = 0° 47' 57"
 R = 7,169.08'
 T = 155.95'
 L = 311.85'
 E = 1.70'
 P.C. STA. = 367+33.80
 P.T. STA. = 370+45.65

HORIZONTAL CURVE DATA - CURVE C-13
 @ US ROUTE 20 (LAKE STREET)
 PI STA. = 378+86.28
 Δ = 5° 35' 29" (LT)
 D = 1° 51' 49"
 R = 3,074.29'
 T = 150.12'
 L = 300.01'
 E = 3.66'
 P.C. STA. = 377+36.15
 P.T. STA. = 380+36.16

BENCHMARKS

NO.	LOCATION & DESCRIPTION	ELEVATION	NORTHING	EASTING
1	"X" CUT IN CONCRETE MEDIAN US RTE. 20 (LAKE STREET)	695.31	12,667.660	89,010.7600
2	IRON PIN W/CAP IN MEDIAN OF US RTE. 20 (LAKE STREET)	697.85	12,532.474	89,426.520
5	IRON PIN IN RAMP GORE OF US RTE. 20 (LAKE STREET)	692.67	11,846.9610	90,324.4970
6	IRON PIN NEAR I-290 AND RAMP F	693.19	12,006.4100	90,715.73
7	PK NAIL IN MEDIAN OF US RTE. 20 (LAKE STREET)	690.15	11,365.4720	90,983.3020
8	"X" CUT IN SIDEWALK NEAR DRIVE ON NORTHBOUND YORK ROAD	685.99	11,305.0370	91,534.4180
9	PK NAIL IN SIDEWALK NEAR BURGER KING ON YORK ROAD THIS POINT HAS BEEN DESTROYED	686.88		

NOTE:
 ALL COORDINATES SHOWN ARE BASED UPON
 A PROJECT SPECIFIC COORDINATE SYSTEM.

