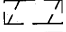

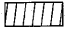
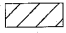
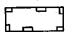

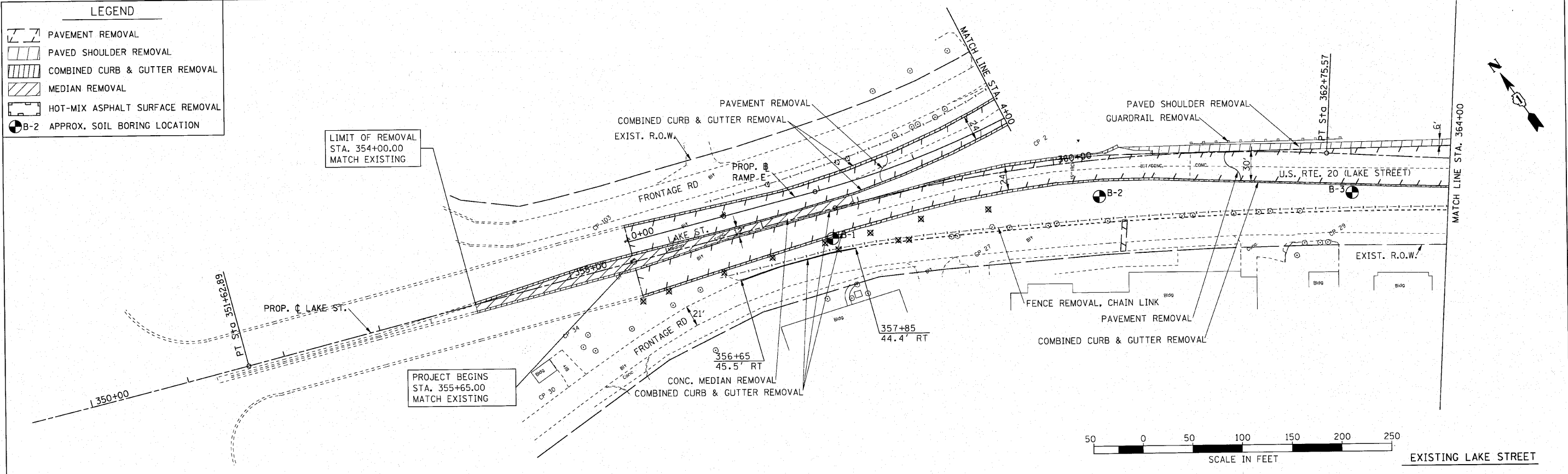
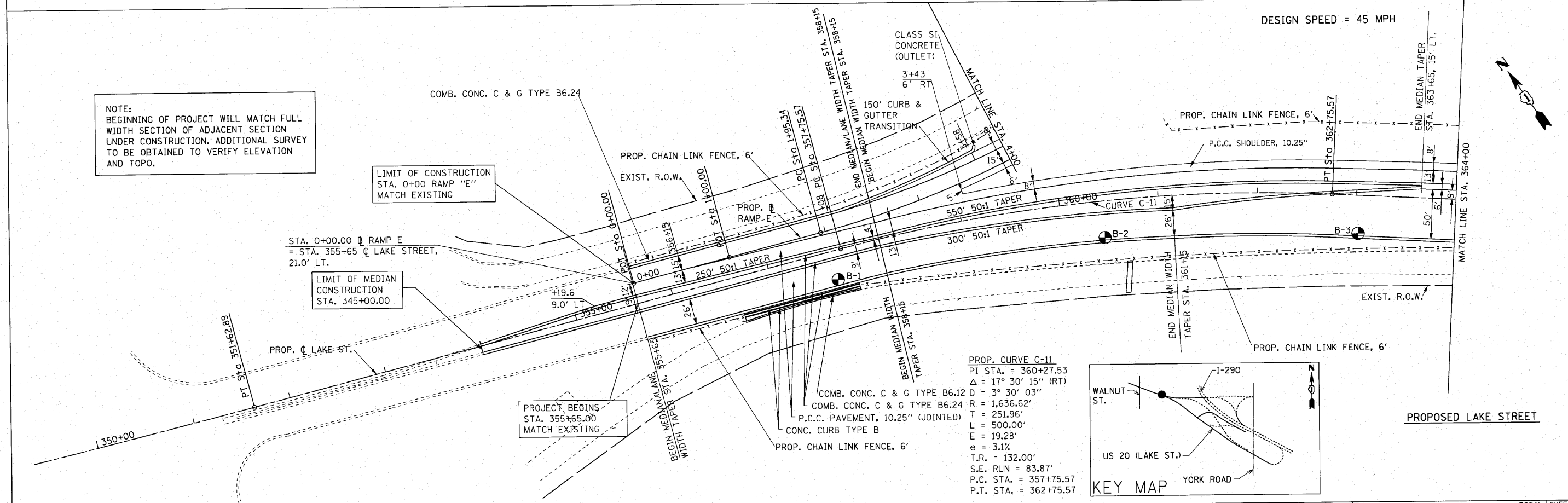


LEGEND

-  PAVEMENT REMOVAL
-  PAVED SHOULDER REMOVAL
-  COMBINED CURB & GUTTER REMOVAL
-  MEDIAN REMOVAL
-  HOT-MIX ASPHALT SURFACE REMOVAL
-  B-2 APPROX. SOIL BORING LOCATION



NOTE:
BEGINNING OF PROJECT WILL MATCH FULL WIDTH SECTION OF ADJACENT SECTION UNDER CONSTRUCTION. ADDITIONAL SURVEY TO BE OBTAINED TO VERIFY ELEVATION AND TOPO.



PROP. CURVE C-11
 PI STA. = 360+27.53
 $\Delta = 17^\circ 30' 15''$ (RT)
 $D = 3^\circ 30' 03''$
 $R = 1,636.62'$
 $T = 251.96'$
 $L = 500.00'$
 $E = 19.28'$
 $e = 3.1\%$
 $T.R. = 132.00'$
 $S.E. RUN = 83.87'$
 $P.C. STA. = 357+75.57$
 $P.T. STA. = 362+75.57$

FILE NAME = 021.plan.dgn	USER NAME = ID01(ang)	DESIGNED -	REVISED -
		DRAWN - BLV	REVISED -
		CHECKED - SRG	REVISED -
		DATE - 1/18/10	REVISED -

**STATE OF ILLINOIS
DEPARTMENT OF TRANSPORTATION**

**U.S. ROUTE 20 (LAKE STREET)
ROADWAY PLAN**

F.A.U. RTE. 3537	SECTION (4Y & 22-31R-2)	COUNTY DUPAGE	TOTAL SHEETS 284	SHEET NO. 43
SCALE: 1"=50'		SHEET NO. 43 OF SHEETS		STA. 355+65 TO STA. 364+00
FED. ROAD DIST. NO.		ILLINOIS FED. AID PROJECT		