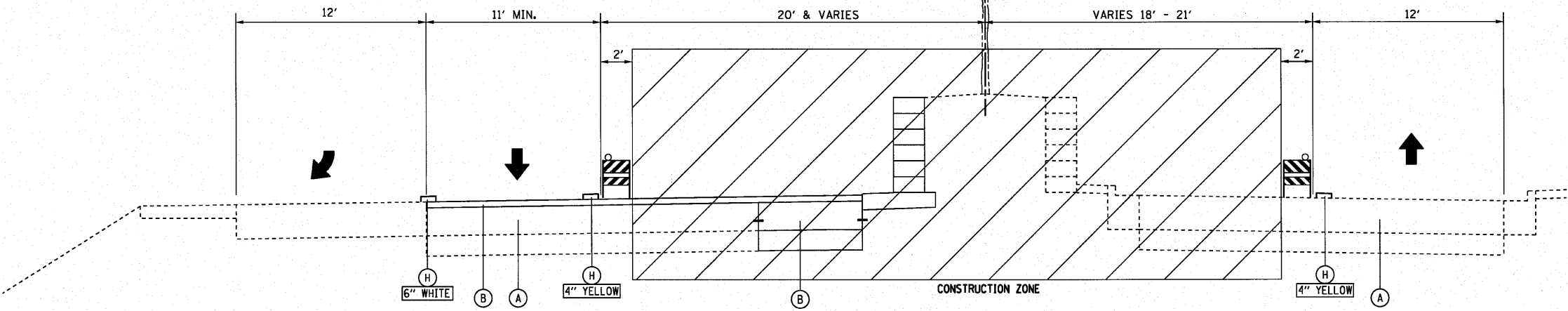
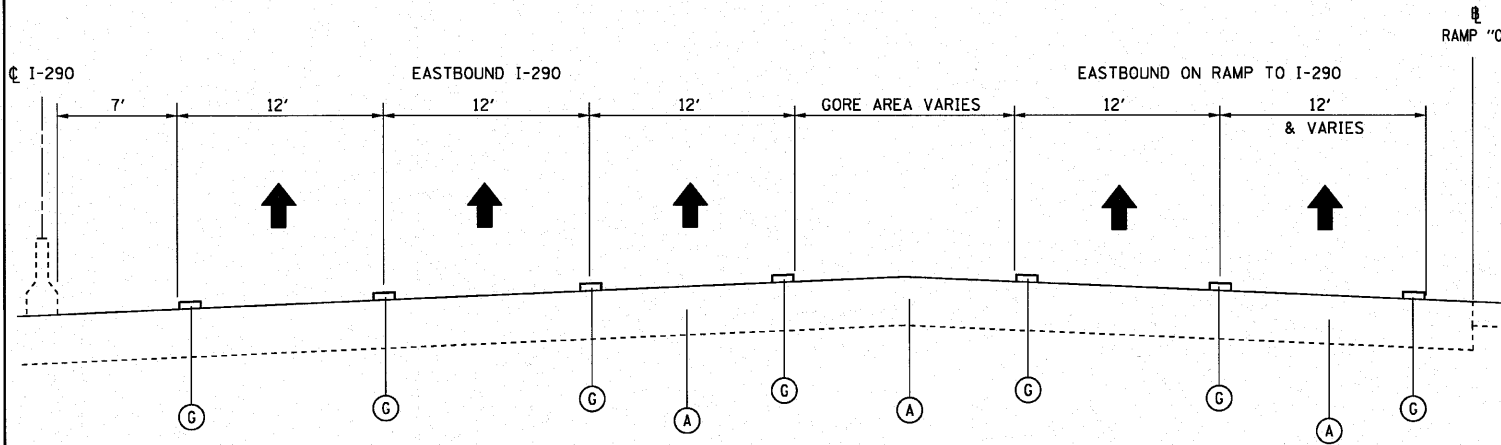


MAINTAIN PEDESTRIAN ACCESS TO BUSINESSES AT ALL TIMES DURING CONSTRUCTION.

**YORK ROAD
STA. 40+08 TO STA. 45+00
MAINTENANCE OF TRAFFIC
PRESTAGE
TYPICAL SECTION 8**



**YORK ROAD
STA. 45+00 TO STA. 46+31
MAINTENANCE OF TRAFFIC
PRESTAGE
TYPICAL SECTION 9**



**I-290 / RAMP '0'
STA. 22+00 TO STA. 25+00 RAMP '0'
MAINTENANCE OF TRAFFIC
PRESTAGE
TYPICAL SECTION 10**

- LEGEND**
- (A) EXISTING PAVEMENT
 - (B) PROPOSED PAVEMENT CONSTRUCTED IN PRESTAGE
 - (C) PROPOSED PAVEMENT CONSTRUCTED IN STAGE I
 - (D) PROPOSED PAVEMENT CONSTRUCTED IN STAGE II
 - (E) TEMPORARY PAVEMENT CONSTRUCTED IN PRESTAGE
 - (F) TEMPORARY PAVEMENT CONSTRUCTED IN STAGE III
 - (G) EXISTING/PROPOSED PAVEMENT MARKING (TYP.)
 - (H) TEMPORARY PAVEMENT MARKING (TYP.)
 - (I) TEMPORARY CONCRETE MEDIAN BARRIER

FILE NAME =	USER NAME = #USER*	DESIGNED -	REVISED -	STATE OF ILLINOIS DEPARTMENT OF TRANSPORTATION	MAINTENANCE OF TRAFFIC TYPICAL SECTION PRESTAGE			F.A.U. RTE.	SECTION	COUNTY	TOTAL SHEETS	SHEET NO.
#FILEL*		DRAWN - BLV	REVISED -		SCALE: N.T.S.	SHEET NO. 59 OF	SHEETS	STA.	TO STA.	DUPAGE	284	59
		CHECKED - SRG	REVISED -							CONTRACT NO. 62093		
		DATE - 1/18/10	REVISED -							ILLINOIS FED. AID PROJECT		