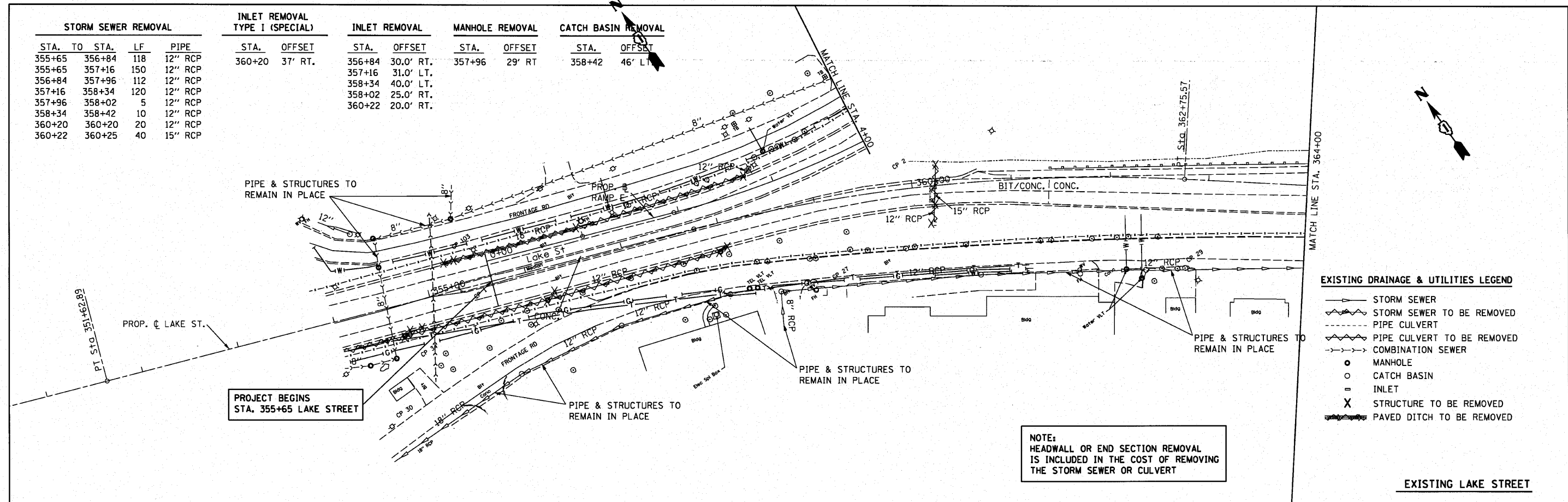


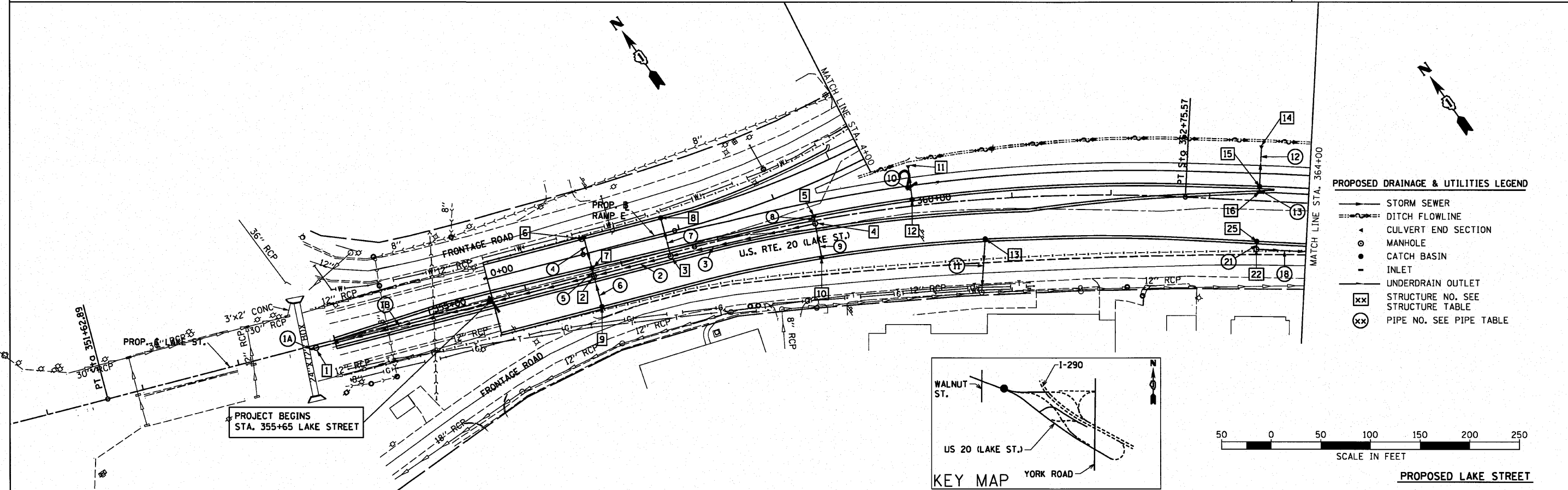
STORM SEWER REMOVAL				INLET REMOVAL TYPE I (SPECIAL)		INLET REMOVAL		MANHOLE REMOVAL		CATCH BASIN REMOVAL	
STA.	TO STA.	LF	PIPE	STA.	OFFSET	STA.	OFFSET	STA.	OFFSET	STA.	OFFSET
355+65	356+84	118	12" RCP	360+20	37' RT.	356+84	30.0' RT.	357+96	29' RT	358+42	46' LT
355+65	357+16	150	12" RCP			357+16	31.0' LT.				
356+84	357+96	112	12" RCP			358+34	40.0' LT.				
357+16	358+34	120	12" RCP			358+02	25.0' RT.				
357+96	358+02	5	12" RCP			360+22	20.0' RT.				
358+34	358+42	10	12" RCP								
360+20	360+20	20	12" RCP								
360+22	360+25	40	15" RCP								



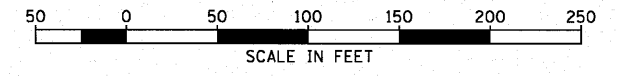
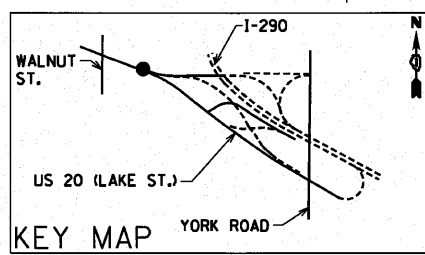
- EXISTING DRAINAGE & UTILITIES LEGEND**
- STORM SEWER
 - - - STORM SEWER TO BE REMOVED
 - - - PIPE CULVERT
 - - - PIPE CULVERT TO BE REMOVED
 - - - COMBINATION SEWER
 - MANHOLE
 - CATCH BASIN
 - = INLET
 - X STRUCTURE TO BE REMOVED
 - ▬ PAVED DITCH TO BE REMOVED

NOTE:
HEADWALL OR END SECTION REMOVAL IS INCLUDED IN THE COST OF REMOVING THE STORM SEWER OR CULVERT

EXISTING LAKE STREET



- PROPOSED DRAINAGE & UTILITIES LEGEND**
- STORM SEWER
 - - - DITCH FLOWLINE
 - - - CULVERT END SECTION
 - MANHOLE
 - CATCH BASIN
 - = INLET
 - UNDERDRAIN OUTLET
 - xx STRUCTURE NO. SEE STRUCTURE TABLE
 - xx PIPE NO. SEE PIPE TABLE



PROPOSED LAKE STREET

FILE NAME = DU.plandgn	USER NAME = #USER#	DESIGNED -	REVISED -	STATE OF ILLINOIS DEPARTMENT OF TRANSPORTATION	U.S. ROUTE 20 (LAKE STREET) DRAINAGE AND UTILITIES	F.A.U. RTE. 3537	SECTION (4Y & 22-3IR-2)	COUNTY DUPAGE	TOTAL SHEETS 284	SHEET NO. 96		
#FILE#	PLOT SCALE = 1"=50'	DRAWN - PRH	REVISED -			SCALE: 1"=50'	SHEET NO. 96 OF SHEETS	STA. 355+65	TO STA. 364+00	CONTRACT NO. 62093		
	PLOT DATE = #DATE#	CHECKED - SRG	REVISED -			FED. ROAD DIST. NO. ILLINOIS FED. AID PROJECT						
		DATE - 1/18/10	REVISED -									