

STORM SEWER REMOVAL			
STA.	TO STA.	LF	PIPE
41+18	41+23	7	10" RCP
41+18	41+27	46	10" RCP
41+18	43+62	244	15" RCP
43+91	43+96	20	12" RCP

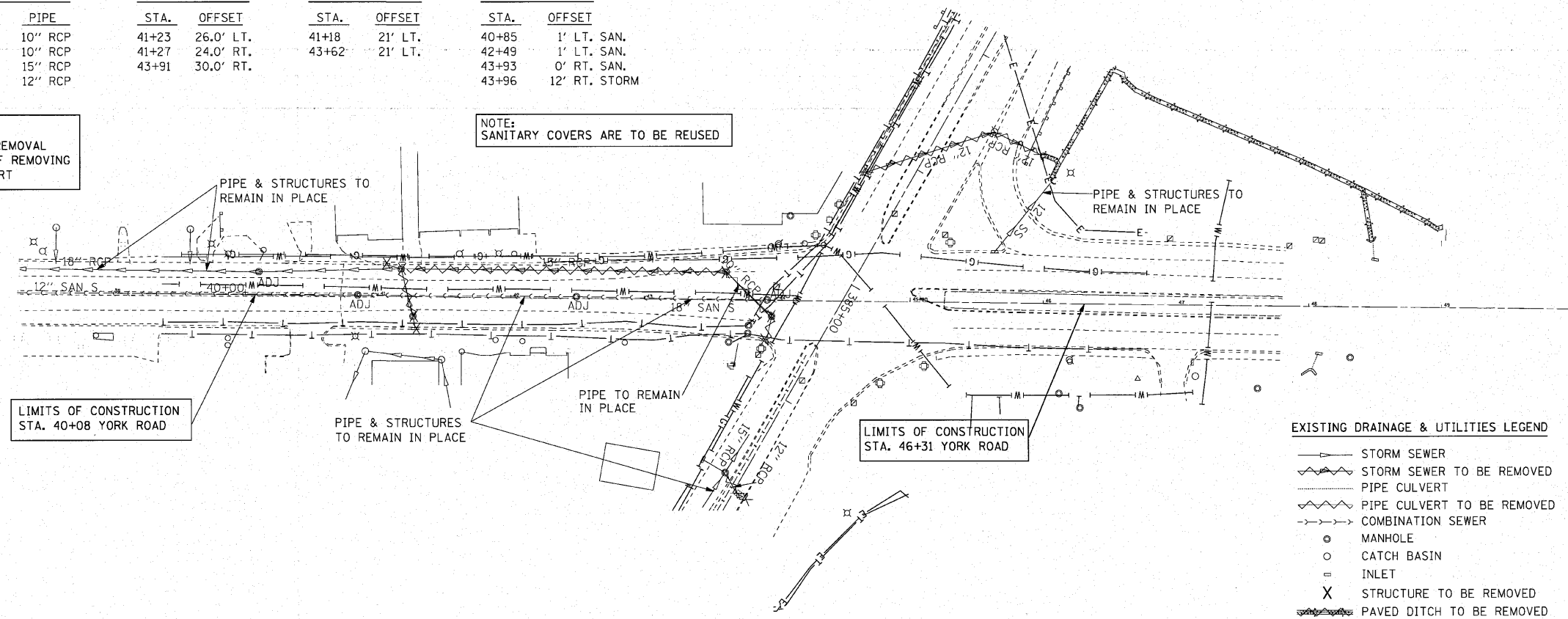
INLET REMOVAL		
STA.	OFFSET	
41+23	26.0' LT.	
41+27	24.0' RT.	
43+91	30.0' RT.	

MANHOLE REMOVAL			
STA.	OFFSET		
41+18	21' LT.		
43+62	21' LT.		

ADJUST MANHOLE			
STA.	OFFSET		
40+85	1' LT. SAN.		
42+49	1' LT. SAN.		
43+93	0' RT. SAN.		
43+96	12' RT. STORM		

NOTE:
HEADWALL OR END SECTION REMOVAL IS INCLUDED IN THE COST OF REMOVING THE STORM SEWER OR CULVERT

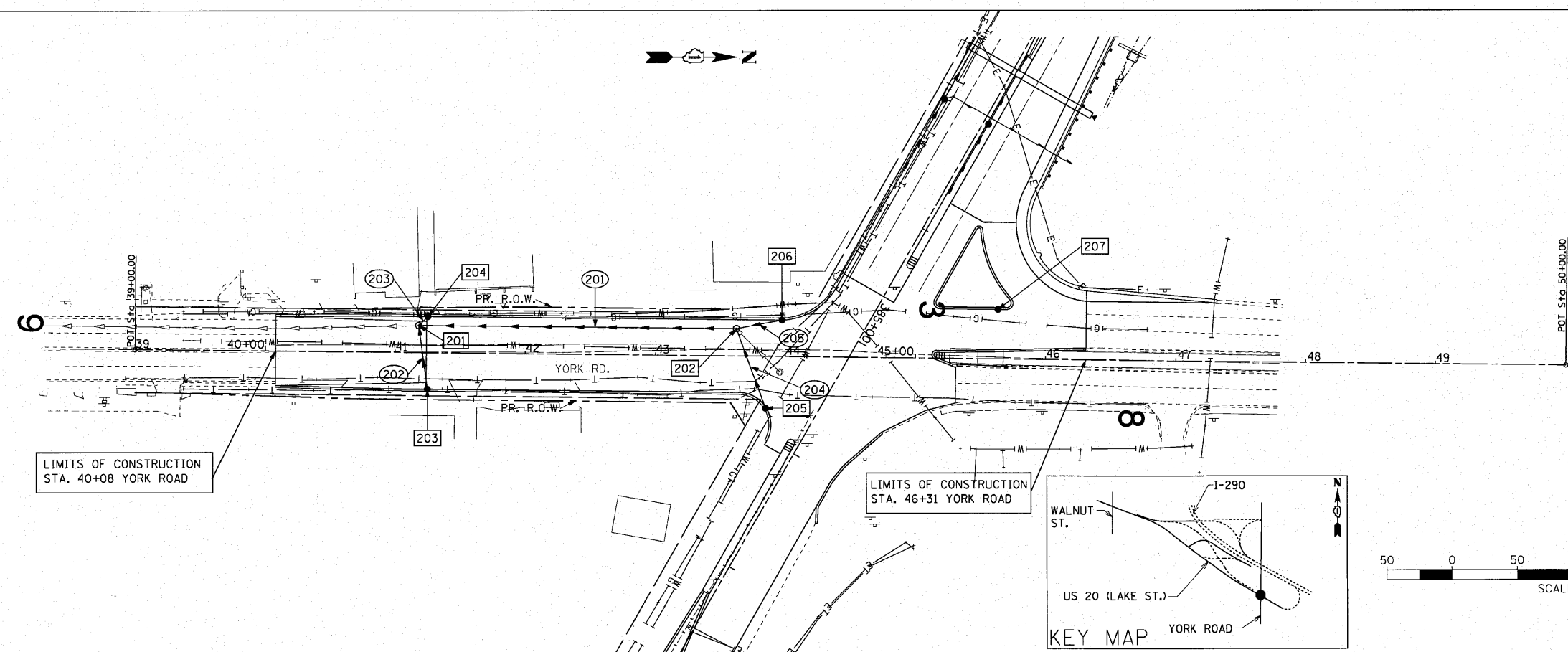
NOTE:
SANITARY COVERS ARE TO BE REUSED



EXISTING DRAINAGE & UTILITIES LEGEND

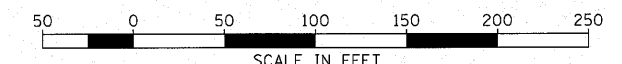
- STORM SEWER
- - - STORM SEWER TO BE REMOVED
- PIPE CULVERT
- - - PIPE CULVERT TO BE REMOVED
- - - COMBINATION SEWER
- MANHOLE
- CATCH BASIN
- INLET
- X STRUCTURE TO BE REMOVED
- ▨ PAVED DITCH TO BE REMOVED

EXISTING YORK ROAD



PROPOSED DRAINAGE & UTILITIES LEGEND

- STORM SEWER
- - - DITCH FLOWLINE
- ◄ CULVERT END SECTION
- MANHOLE
- CATCH BASIN
- INLET
- UNDERDRAIN OUTLET
- xx STRUCTURE NO. SEE STRUCTURE TABLE
- xx PIPE NO. SEE PIPE TABLE



PROPOSED YORK ROAD

FILE NAME = DU.plandgn	USER NAME = ID0T(ang)	DESIGNED -	REVISED -	STATE OF ILLINOIS DEPARTMENT OF TRANSPORTATION	YORK ROAD DRAINAGE AND UTILITIES	F.A.U. RTE.	SECTION	COUNTY	TOTAL SHEETS	SHEET NO.	
DU.plandgn		DRAWN - PRH	REVISED -			3537	(4Y & 22-3R-2)	DUPAGE	284	101	
PLOT SCALE = 1"=50'		CHECKED - SRG	REVISED -			CONTRACT NO. 62093					
PLOT DATE = 3/22/2010		DATE - 1/18/10	REVISED -			FED. ROAD DIST. NO. ILLINOIS FED. AID PROJECT					

SCALE: 1"=50' SHEET NO. 101 OF SHEETS STA. 40+08 TO STA. 46+31