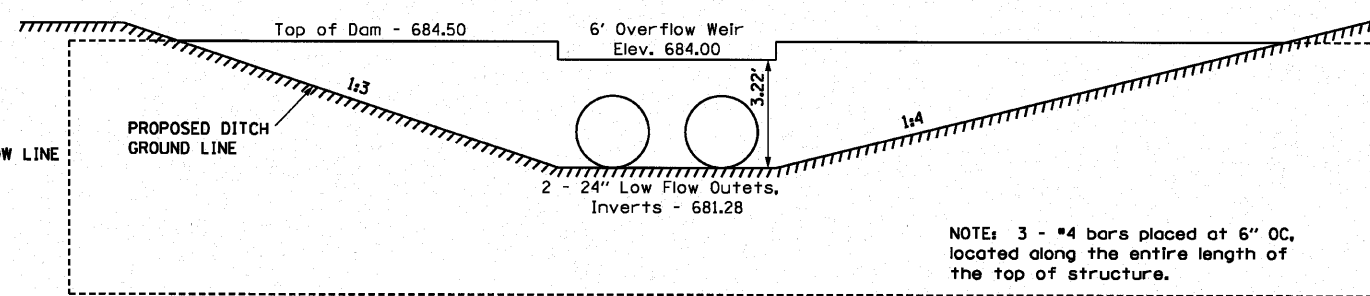
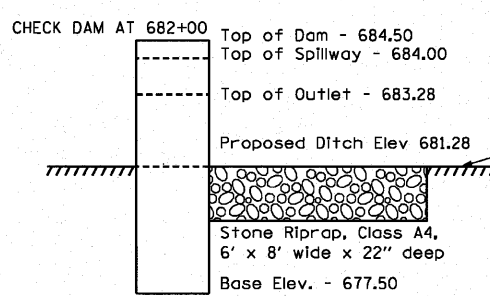
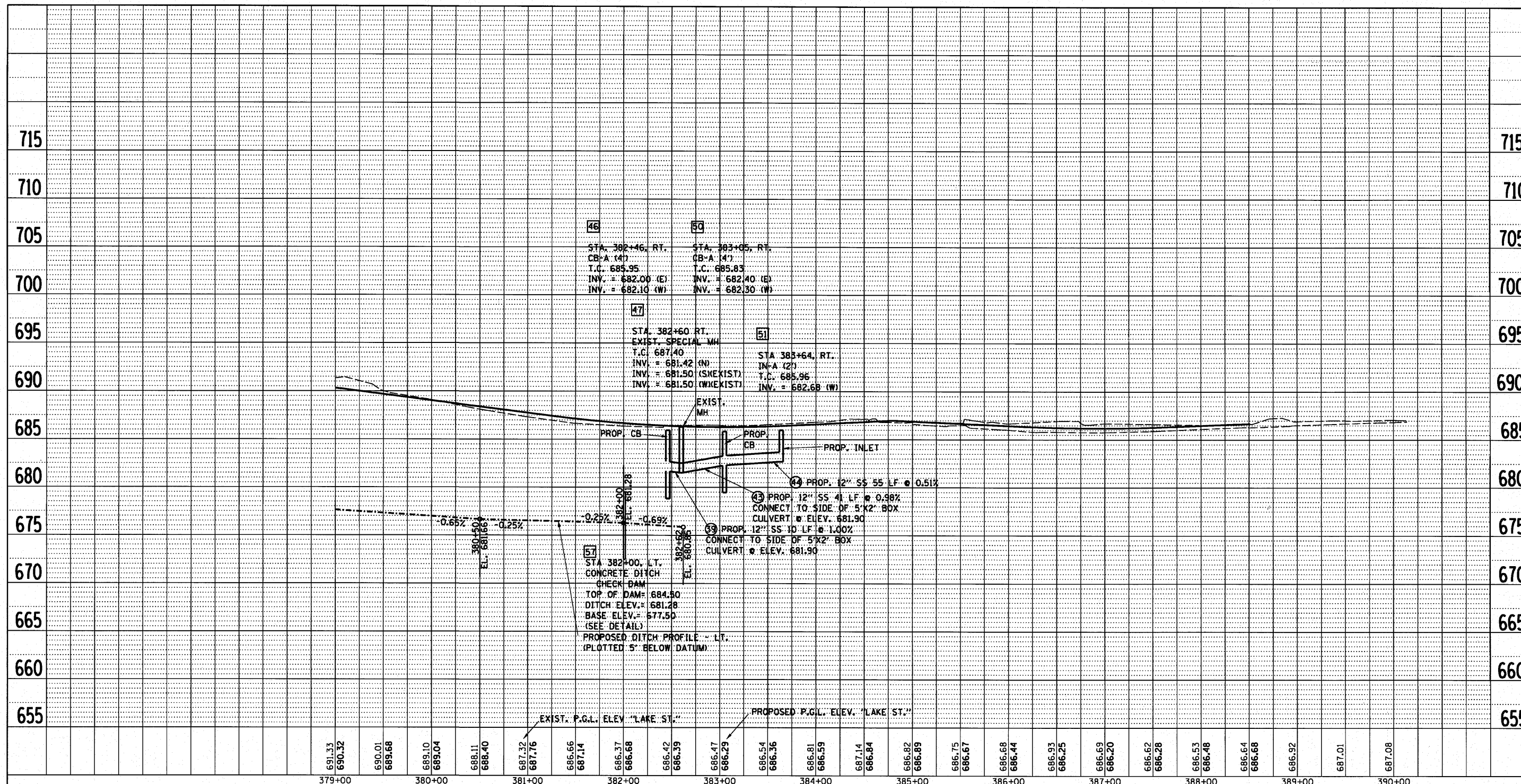


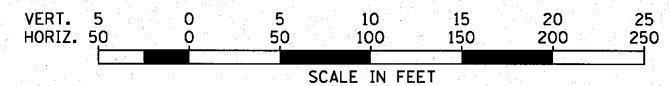
PLAN	DESIGNED	CHECKED	DATE
NO.	PLOTTED	ALIGNED	
NOTE BOOK	NO.	NO.	
NO.	NO.	NO.	

PROFILE	DESIGNED	CHECKED	DATE
NO.	PLOTTED	ALIGNED	
NOTE BOOK	NO.	NO.	
NO.	NO.	NO.	



DETAIL CHECK DAM AT 382+00, LT.

NOTE: 3 - #4 bars placed at 6" OC, located along the entire length of the top of structure.



FILE NAME = DU_profile.dgn
FILEL

USER NAME = *USER*	DESIGNED -	REVISED -
PLOT SCALE = 1"=50'	DRAWN - PRH	REVISED -
PLOT DATE = *DATE*	CHECKED - SRG	REVISED -
	DATE - 1/18/10	REVISED -

**STATE OF ILLINOIS
DEPARTMENT OF TRANSPORTATION**

**U.S. ROUTE 20 (LAKE STREET)
DRAINAGE & UTILITY PROFILE**

SCALE: AS NOTED SHEET NO. 104 OF SHEETS STA. 379+00 TO STA. 390+25

F.A.U. RTE. 3537	SECTION (4Y & 22-3JR-2)	COUNTY DUPAGE	TOTAL SHEETS 284	SHEET NO. 104
FED. ROAD DIST. NO. ILLINOIS FED. AID PROJECT			CONTRACT NO. 62093	