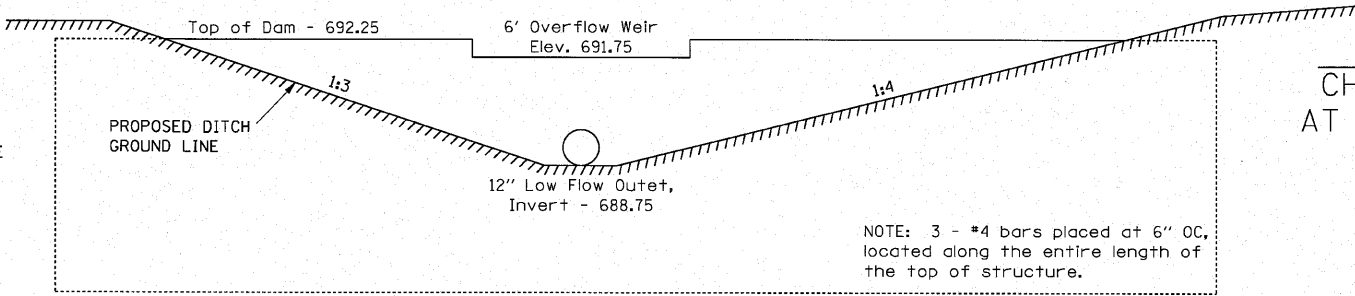
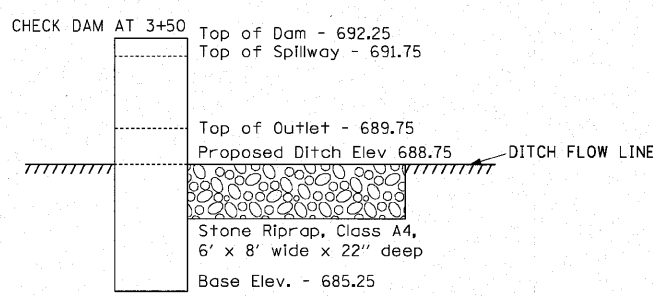
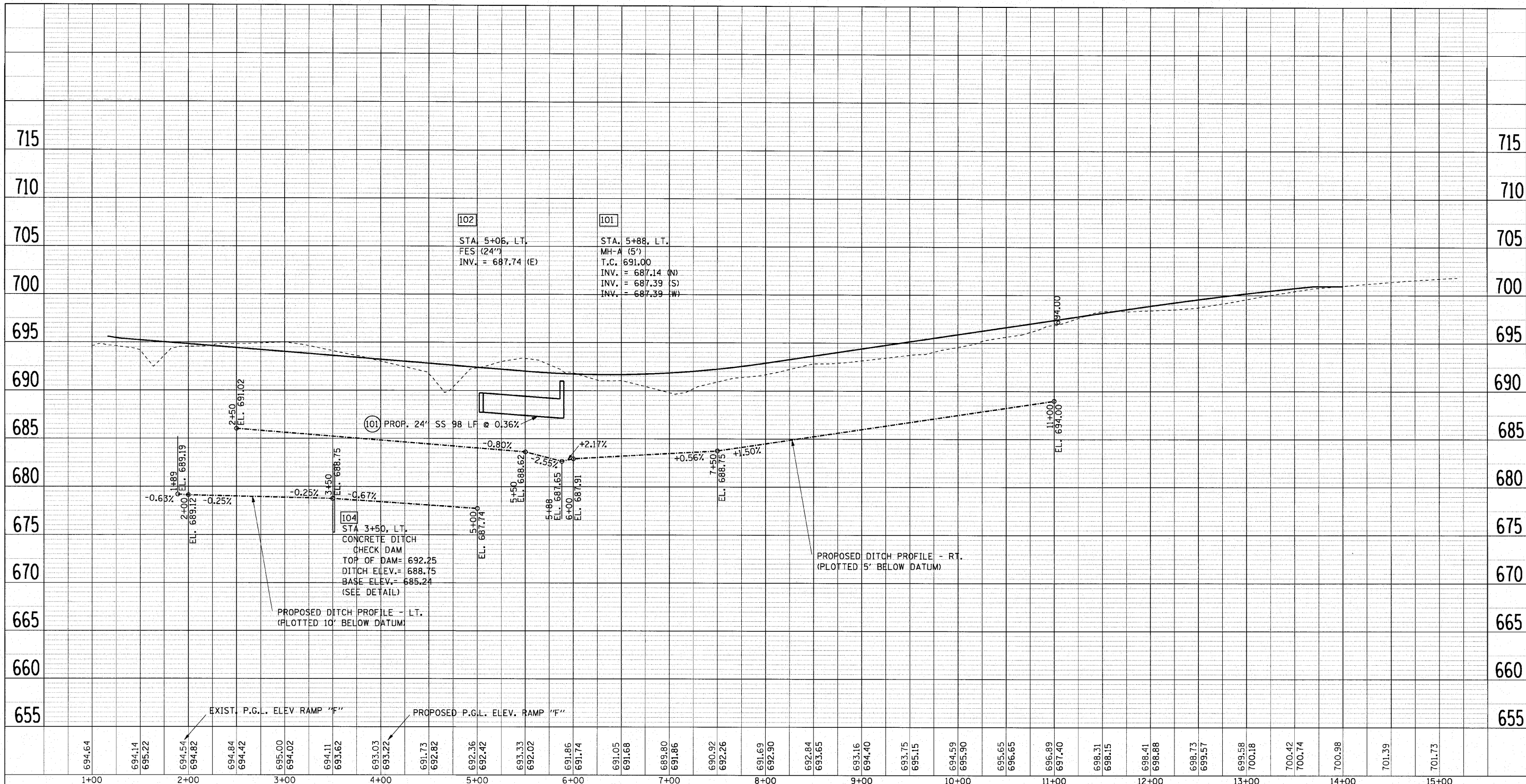
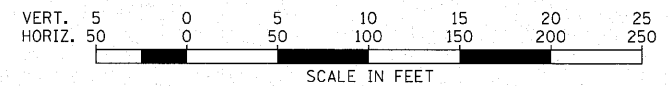


| | | |
|------|----------|------|
| PLAN | REVISION | DATE |
| NO. | NO. | NO. |
| BY | BY | BY |
| DATE | DATE | DATE |
| NO. | NO. | NO. |
| BY | BY | BY |
| DATE | DATE | DATE |
| NO. | NO. | NO. |

| | | |
|---------|----------|------|
| PROFILE | REVISION | DATE |
| NO. | NO. | NO. |
| BY | BY | BY |
| DATE | DATE | DATE |
| NO. | NO. | NO. |
| BY | BY | BY |
| DATE | DATE | DATE |
| NO. | NO. | NO. |



DETAIL
CHECK DAM
AT 3+50, LT.



NOTE: 3 - #4 bars placed at 6" OC, located along the entire length of the top of structure.

| | | | | | | | | | | |
|----------------------------|-----------------------|----------------|-----------|---|--|---|------------------------|---------------|------------------|---------------|
| FILE NAME = DU_profile.dgn | USER NAME = IDOT(eng) | DESIGNED - | REVISED - | STATE OF ILLINOIS DEPARTMENT OF TRANSPORTATION | EASTBOUND I-290 ON RAMP - RAMP "F" DRAINAGE & UTILITY PROFILE | F.A.U. RTE. 3537 | SECTION (4Y & 22-3R-2) | COUNTY DUPAGE | TOTAL SHEETS 284 | SHEET NO. 106 |
| DU_profile.dgn | PLOT SCALE = 1"=50' | DRAWN - PRH | REVISED - | | | CONTRACT NO. 62093 | | | | |
| | PLOT DATE = 1/13/2010 | CHECKED - SRG | REVISED - | | | FED. ROAD DIST. NO. ILLINOIS FED. AID PROJECT | | | | |
| | | DATE - 1/18/10 | REVISED - | | | SCALE: AS NOTED SHEET NO. 106 OF SHEETS STA. 1+00 TO STA. 14+00 | | | | |