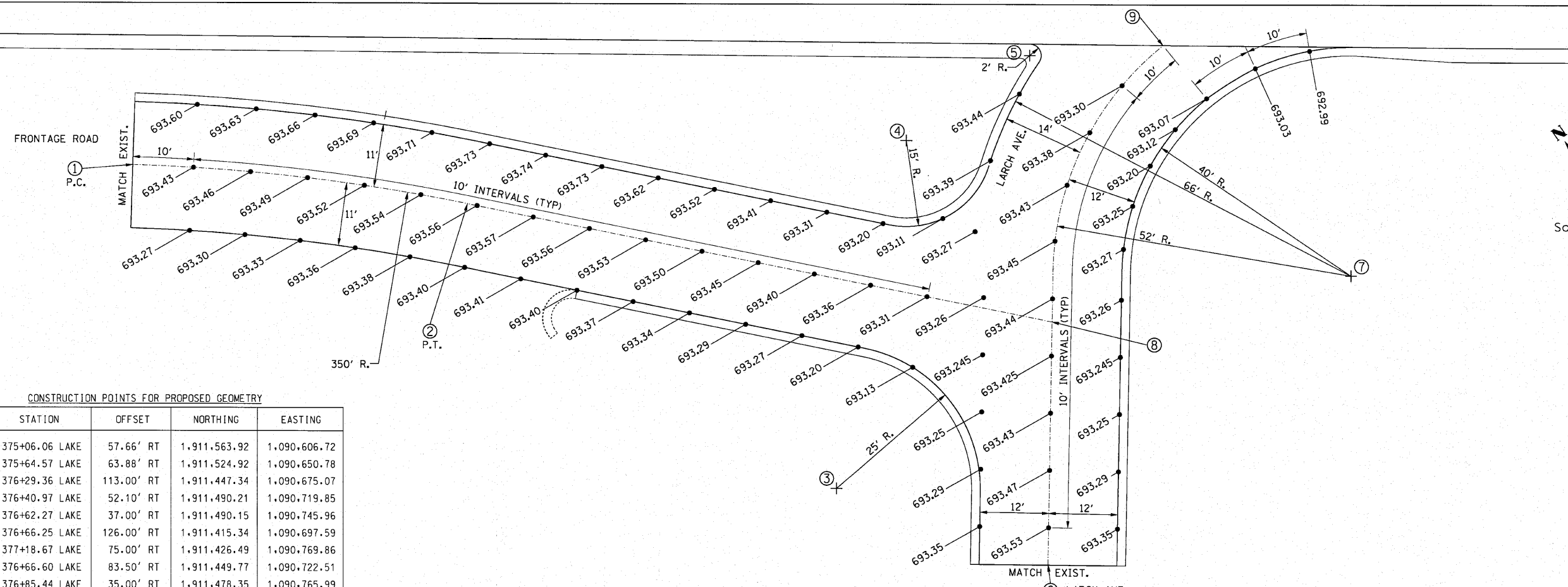


Scale: 1" = 10'



Scale: 1" = 10'

CONSTRUCTION POINTS FOR PROPOSED GEOMETRY

POINT	STATION	OFFSET	NORTHING	EASTING
①	375+06.06 LAKE	57.66' RT	1,911,563.92	1,090,606.72
②	375+64.57 LAKE	63.88' RT	1,911,524.92	1,090,650.78
③	376+29.36 LAKE	113.00' RT	1,911,447.34	1,090,675.07
④	376+40.97 LAKE	52.10' RT	1,911,490.21	1,090,719.85
⑤	376+62.27 LAKE	37.00' RT	1,911,490.15	1,090,745.96
⑥	376+66.25 LAKE	126.00' RT	1,911,415.34	1,090,697.59
⑦	377+18.67 LAKE	75.00' RT	1,911,426.49	1,090,769.86
⑧	376+66.60 LAKE	83.50' RT	1,911,449.77	1,090,722.51
⑨	376+85.44 LAKE	35.00' RT	1,911,478.35	1,090,765.99

FILE NAME = 022_spt.dgn	USER NAME = IDOT(eng)	DESIGNED -	REVISED -
		DRAWN - BLV	REVISED -
		CHECKED - SRG	REVISED -
		DATE - 1/18/10	REVISED -

STATE OF ILLINOIS
DEPARTMENT OF TRANSPORTATION

RAMP "E" LARCH AVE.
JOINT DETAILS/SPECIAL DETAILS

SCALE: 1"=10' SHEET NO. 112 OF SHEETS STA. TO STA.

F.A.J. RTE. 3537	SECTION (4Y & 22-3)R-2	COUNTY DUPAGE	TOTAL SHEETS 284	SHEET NO. 112
CONTRACT NO. 62093				
FED. ROAD DIST. NO. [ILLINOIS] FED. AID PROJECT				