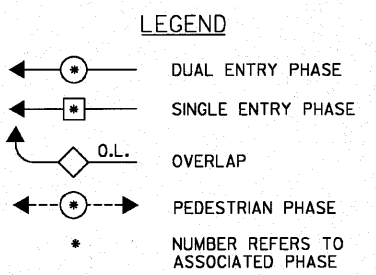
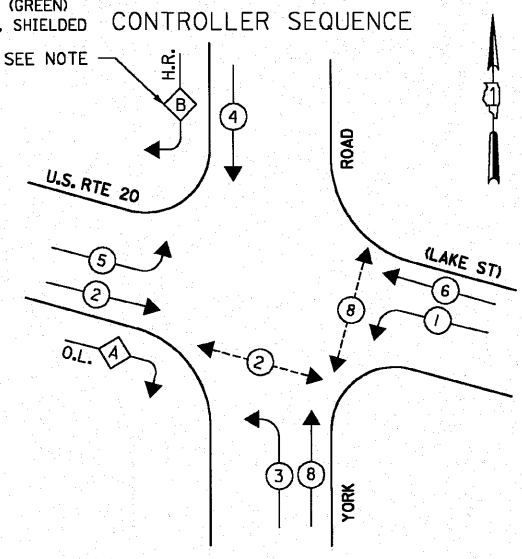
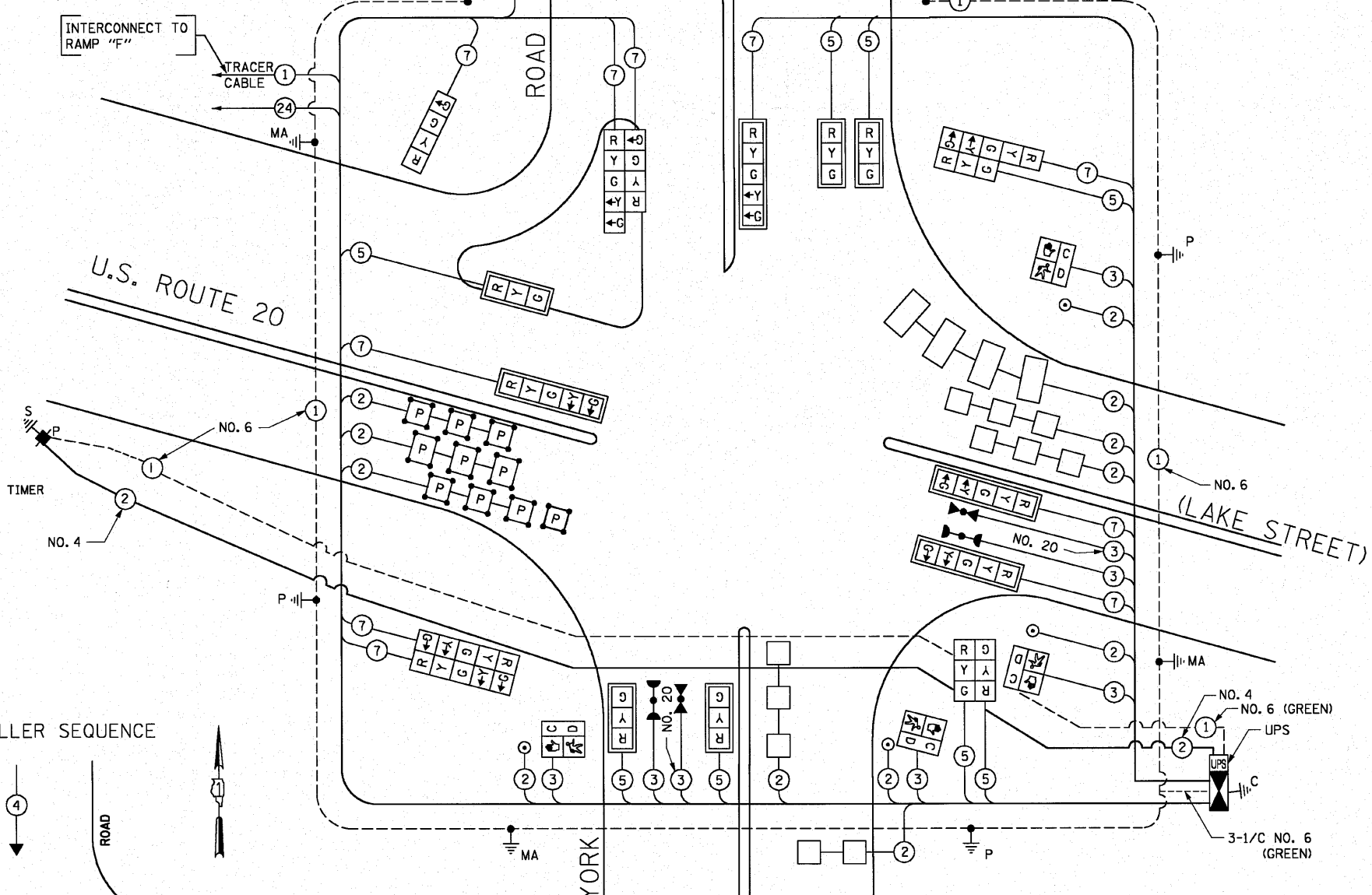


SCHEDULE OF QUANTITIES

QUANTITY	UNIT	ITEM
12	SQ FT	SIGN PANEL - TYPE 1
25	SQ FT	SIGN PANEL - TYPE 2
608	FOOT	CONDUIT IN TRENCH, 2" DIA., GALVANIZED STEEL
120	FOOT	CONDUIT IN TRENCH, 2 1/2" DIA., GALVANIZED STEEL
103	FOOT	CONDUIT IN TRENCH, 3" DIA., GALVANIZED STEEL
59	FOOT	CONDUIT IN TRENCH, 4" DIA., GALVANIZED STEEL
354	FOOT	CONDUIT PUSHED, 2" DIA., GALVANIZED STEEL
350	FOOT	CONDUIT PUSHED, 4" DIA., GALVANIZED STEEL
9	EACH	HANDHOLE
3	EACH	HEAVY-DUTY HANDHOLE
2	EACH	DOUBLE HANDHOLE
808	FOOT	TRENCH AND BACKFILL FOR ELECTRICAL WORK
1	EACH	FULL-ACTUATED CONTROLLER AND TYPE IV CABINET, SPECIAL
1	EACH	TRANSCEIVER-FIBER OPTIC
457	FOOT	ELECTRIC CABLE IN CONDUIT, SIGNAL NO. 14 2C
801	FOOT	ELECTRIC CABLE IN CONDUIT, SIGNAL NO. 14 3C
1580	FOOT	ELECTRIC CABLE IN CONDUIT, SIGNAL NO. 14 5C
2234	FOOT	ELECTRIC CABLE IN CONDUIT, SIGNAL NO. 14 7C
2034	FOOT	ELECTRIC CABLE IN CONDUIT, LEAD-IN, NO. 14 1 PAIR
1	EACH	TRAFFIC SIGNAL POST, GALVANIZED STEEL 14 FT.
1	EACH	TRAFFIC SIGNAL POST, GALVANIZED STEEL 15 FT.
2	EACH	TRAFFIC SIGNAL POST, GALVANIZED STEEL 16 FT.
1	EACH	STEEL MAST ARM ASSEMBLY AND POLE, 22 FT.
1	EACH	STEEL MAST ARM ASSEMBLY AND POLE, 28 FT.
1	EACH	STEEL MAST ARM ASSEMBLY AND POLE, 38 FT.
1	EACH	STEEL MAST ARM ASSEMBLY AND POLE, 40 FT.
16	FOOT	CONCRETE FOUNDATION, TYPE A
4	FOOT	CONCRETE FOUNDATION, TYPE C
30	FOOT	CONCRETE FOUNDATION, TYPE E 30-INCH DIAMETER
30	FOOT	CONCRETE FOUNDATION, TYPE E 36-INCH DIAMETER
5	EACH	SIGNAL HEAD, LED, 1-FACE, 3-SECTION, MAST ARM MOUNTED
1	EACH	SIGNAL HEAD, LED, 1-FACE, 4-SECTION, BRACKET MOUNTED
4	EACH	SIGNAL HEAD, LED, 1-FACE, 5-SECTION, MAST ARM MOUNTED
1	EACH	SIGNAL HEAD, LED, 2-FACE, 3-SECTION, BRACKET MOUNTED
1	EACH	SIGNAL HEAD, LED, 2-FACE, 5-SECTION, BRACKET MOUNTED
1	EACH	SIGNAL HEAD, LED, 2-FACE, 1-3 SECTION, 1-5 SECTION, BRACKET MOUNTED
1	EACH	SIGNAL HEAD, LED, 2-FACE, 1-4 SECTION, 1-5 SECTION, BRACKET MOUNTED
4	EACH	PEDESTRIAN SIGNAL HEAD, LED, 1-FACE, BRACKET MOUNTED WITH COUNTDOWN TIMER
9	EACH	TRAFFIC SIGNAL BACKPLATE
9	EACH	INDUCTIVE LOOP DETECTOR
626	FOOT	DETECTOR LOOP, TYPE 1
2	EACH	LIGHT DETECTOR
1	EACH	LIGHT DETECTOR AMPLIFIER
4	EACH	PEDESTRIAN PUSH-BUTTON
1	EACH	TEMPORARY TRAFFIC SIGNAL INSTALLATION
1	EACH	REMOVE EXISTING TRAFFIC SIGNAL EQUIPMENT
14	EACH	REMOVE EXISTING HANDHOLE
7	EACH	REMOVE EXISTING CONCRETE FOUNDATION
309	FOOT	PREFORMED DETECTOR LOOP
1	EACH	TEMPORARY TRAFFIC SIGNAL TIMING
1	EACH	SERVICE INSTALLATION, POLE MOUNT
1	EACH	UNINTERRUPTIBLE POWER SUPPLY (UPS)
1364	FOOT	ELECTRIC CABLE IN CONDUIT, GROUNDING, NO. 6 1C (GREEN)
316	FOOT	ELECTRIC CABLE IN CONDUIT NO. 20 3/C, TWISTED, SHIELDED
396	FOOT	ELECTRIC CABLE IN CONDUIT, SERVICE, NO. 4 2C

• 100% COST TO THE CITY OF ELMHURST

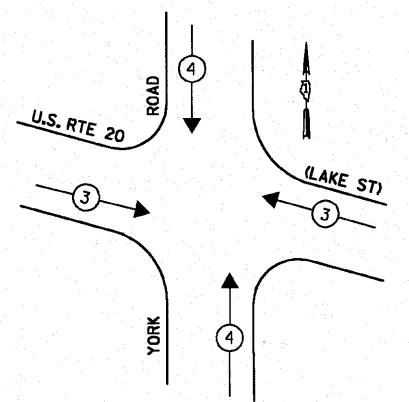
THE END OF THE TRACER CABLE SHALL BE CONTINUOUS AND EXTEND INTO THE CONTROLLER CABINET.



NOTE
THE GREEN RIGHT TURN ARROW INDICATION FOR THE SOUTHBOUND TO WESTBOUND RIGHT TURN MOVEMENT IS HOT WIRED.

CABLE PLAN
NOT TO SCALE

EMERGENCY VEHICLE PREEMPTION SEQUENCE



PROPOSED EMERGENCY VEHICLE PREEMPTORS	
EMERGENCY VEHICLE PREEMPTOR	3 4
MOVEMENT	← → ↑ ↓

ILLINOIS DEPARTMENT OF TRANSPORTATION
TRAFFIC SIGNAL INSTALLATION
ELECTRICAL SERVICE REQUIREMENTS

TYPE	NO LAMPS	WATTAGE	OPERATION	TOTAL WATTAGE	
SIGNAL HEAD	18	135	17	6.56	153.0
YELLOW	18	135	25	0.25	112.5
GREEN	18	135	15	0.25	67.5
ARROW	16	135	12	0.30	19.2
PEP. SIGNAL	4	90	25	1.00	100.00
CONTROLLER	1	100	100	1.00	100.00
ALLOW. SIGN				0.05	
ARROW (GRN-HOT)	2	12	1.00		24.00
FLASHER				0.50	
ENERGY COSTS TO:				TOTAL =	576.2

ILLINOIS DEPARTMENT OF TRANSPORTATION
200 WEST CENTER COURT
SCHAMBERG, ILLINOIS 60196-1036

ENERGY SUPPLY CONTACT: **COLETTE BOGDAN**
PHONE: (630) 691-4863
COMPANY: **COM ED - GLENBARD**

FILE NAME =	USER NAME = #USER#	DESIGNED - PKG	REVISED -
#FILE#		DRAWN - MAA, SHM	REVISED -
		CHECKED - PKG	REVISED -
		DATE -	REVISED -

STATE OF ILLINOIS
DEPARTMENT OF TRANSPORTATION

CABLE PLAN, PHASE DESIGNATION DIAGRAM, EMERGENCY VEHICLE PREEMPTION SEQUENCE, AND SCHEDULE OF QUANTITIES. U.S. ROUTE 20 (LAKE STREET) AT YORK ROAD		F.A.P. RTE. 3537	SECTION (4Y&22-31R-2)	COUNTY DuPage	TOTAL SHEETS 284	SHEET NO. 131
SCALE: NONE	SHEET NO. OF SHEETS STA.	TO STA.		FED. ROAD DIST. NO. 1 ILLINOIS FED. AID PROJECT		