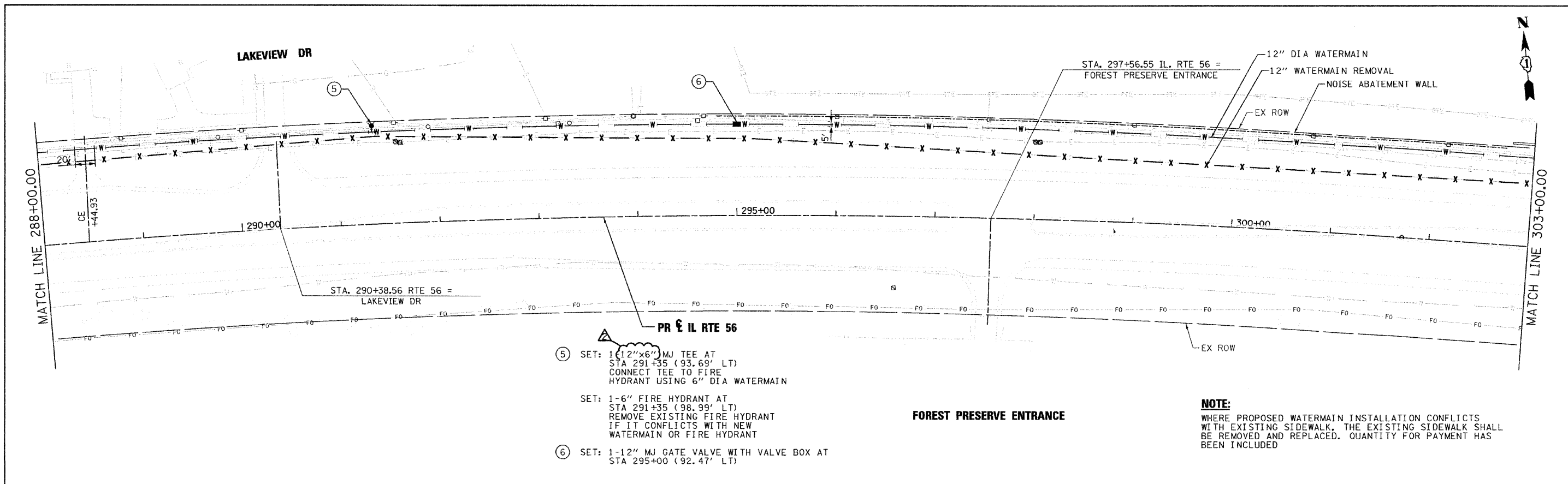


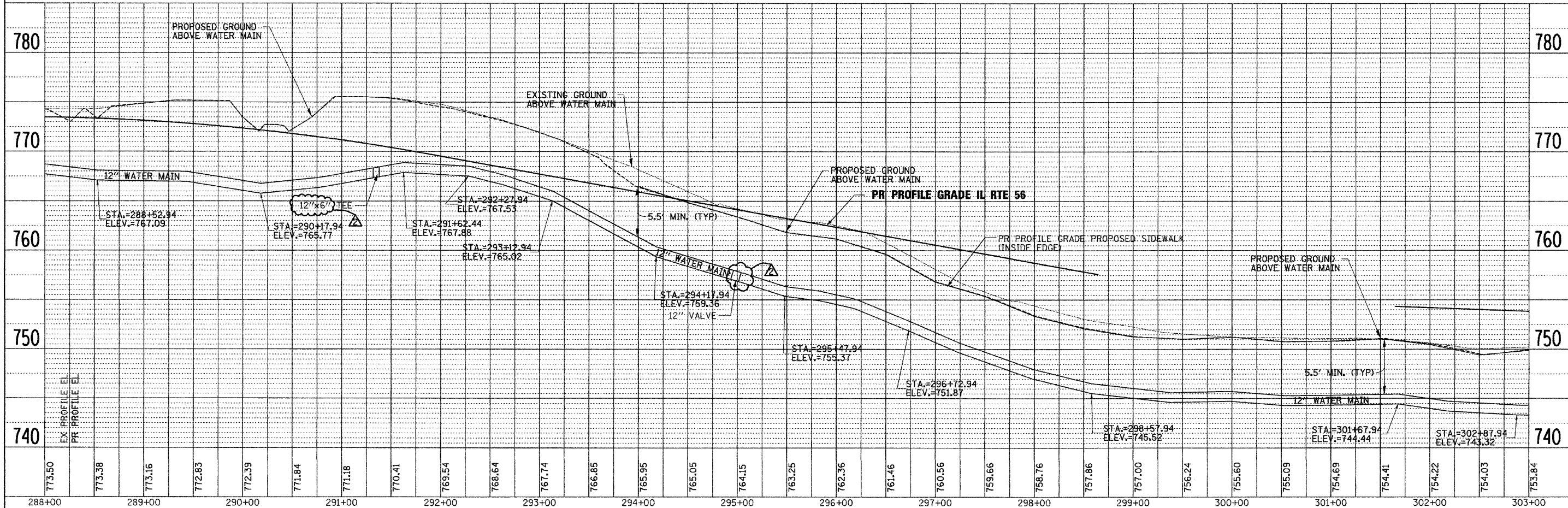
PLAN	SURVEYED	DATE
	ALIGNED	
	CHECKED	
	BY	
	NO.	

PROFILE	SURVEYED	DATE
	GRADES CHECKED	
	BY	
	NO.	



- ⑤ SET: 1-12"x6" MJ TEE AT STA 291+35 (93.69' LT) CONNECT TEE TO FIRE HYDRANT USING 6" DIA WATERMAIN
- SET: 1-6" FIRE HYDRANT AT STA 291+35 (98.99' LT) REMOVE EXISTING FIRE HYDRANT IF IT CONFLICTS WITH NEW WATERMAIN OR FIRE HYDRANT
- ⑥ SET: 1-12" MJ GATE VALVE WITH VALVE BOX AT STA 295+00 (92.47' LT)

**NOTE:**  
WHERE PROPOSED WATERMAIN INSTALLATION CONFLICTS WITH EXISTING SIDEWALK, THE EXISTING SIDEWALK SHALL BE REMOVED AND REPLACED. QUANTITY FOR PAYMENT HAS BEEN INCLUDED



FILE NAME =	DESIGNED - JMM	REVISED - ADDENDUM 1-1/10/11		<b>STATE OF ILLINOIS</b> <b>DEPARTMENT OF TRANSPORTATION</b>				<b>WATERMAIN PLAN AND PROFILE</b> <b>IL RTE 56</b>				F.A.P. RTE. 365	SECTION (57 & 58)WRS-2	COUNTY DUPAGE	TOTAL SHEETS 681	SHEET NO. 288			
USER NAME = tblank	CHECKED - RMT	REVISED -										SCALE: 1"=50'	SHEET NO. 4 OF 11 SHEETS	STA. 288+00 TO STA. 303+00	ILLINOIS FED. AID PROJECT				
PLOT DATE = 1/10/2011	DATE - 12/6/10	REVISED -																	