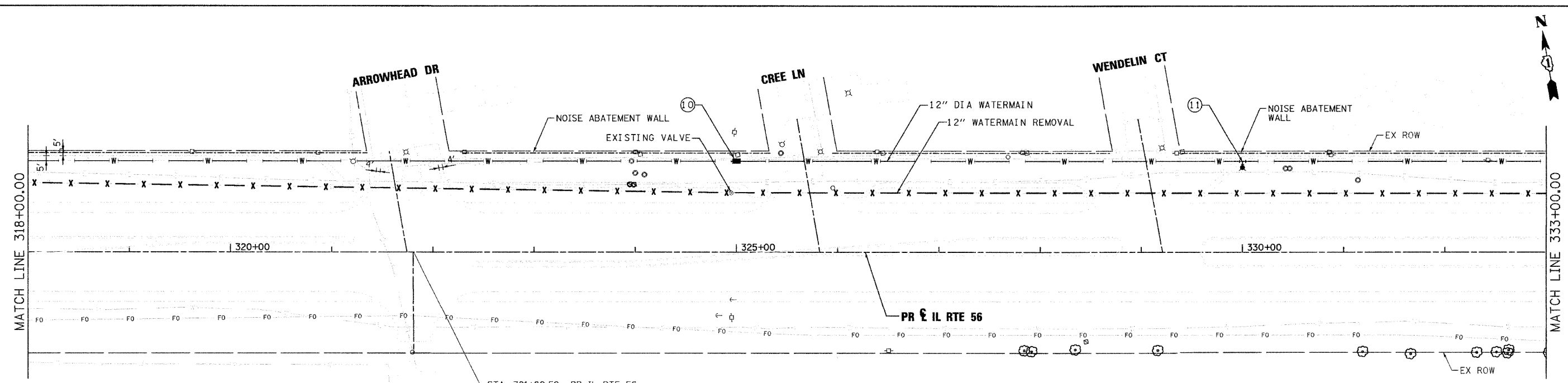




PLAN	SURVEYED	DATE
	GRADES CHECKED	
	ALIGNMENT CHECKED	
	RT. OF WAY CHECKED	
	PAID FILE NAME	

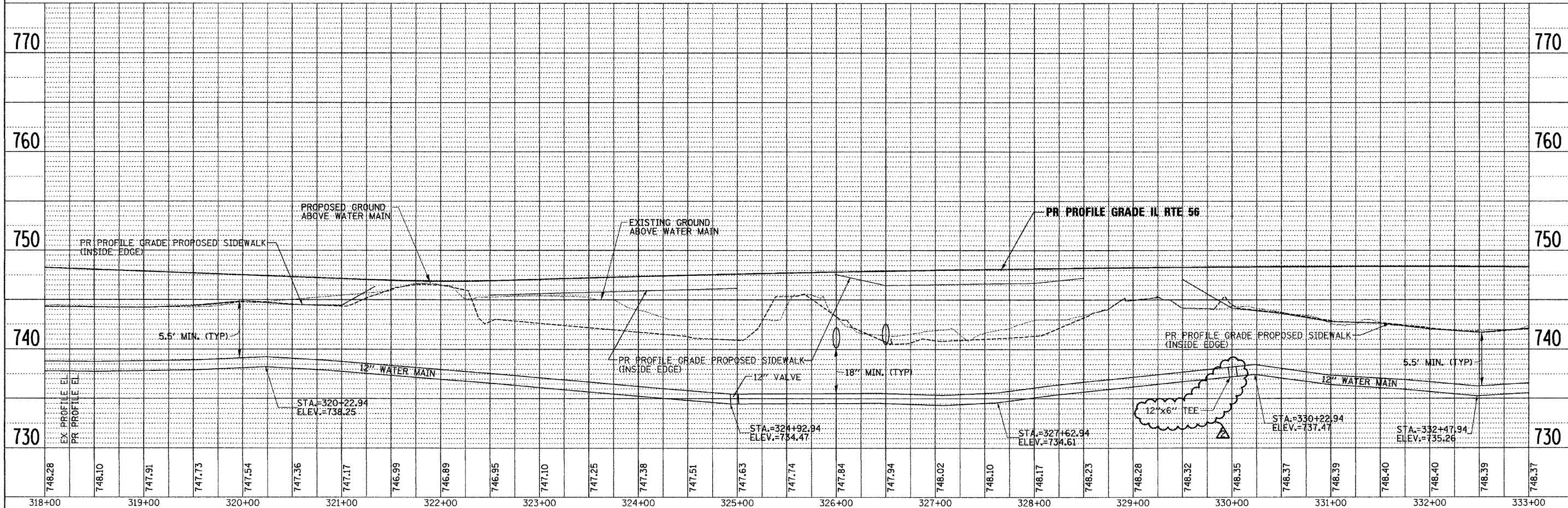
PROFILE	SURVEYED	DATE
	GRADES CHECKED	
	STRUCTURE NOTATIONS CHECKED	



**ARROWHEAD GOLF COURSE ENTRANCE**

STA. 321+80.52 PR IL RTE 56 =  
ARROWHEAD DR

- ⑩ SET: 1-12" MJ GATE VALVE WITH VALVE BOX AT STA 325+00 (90.00' LT)
- ⑪ SET: 12"x6" MJ TEE AT STA 330+00 (90.00' LT) CONNECT TEE TO FIRE HYDRANT USING 6" DIA WATERMAIN
- SET: 1-6" FIRE HYDRANT AT STA 330+00 (83.80' LT)



FILE NAME =	DESIGNED - JMM	REVISED - ADDENDUM 1-1/10/11		<b>STATE OF ILLINOIS</b> <b>DEPARTMENT OF TRANSPORTATION</b>	<b>WATERMAIN PLAN AND PROFILE</b> <b>IL RTE 56</b>	F.A.P. RTE. 365	SECTION (57 & 58)WRS-2	COUNTY	TOTAL SHEETS 681	SHEET NO. 290
USER NAME = tblank	DRAWN - TMB	REVISED -				DUPAGE	CONTRACT NO. 62419			
PLOT DATE = 1/10/2011	CHECKED - RMT	REVISED -				ILLINOIS FED. AID PROJECT				

SCALE: 1"=50' SHEET NO. 6 OF 11 SHEETS STA. 318+00 TO STA. 333+00