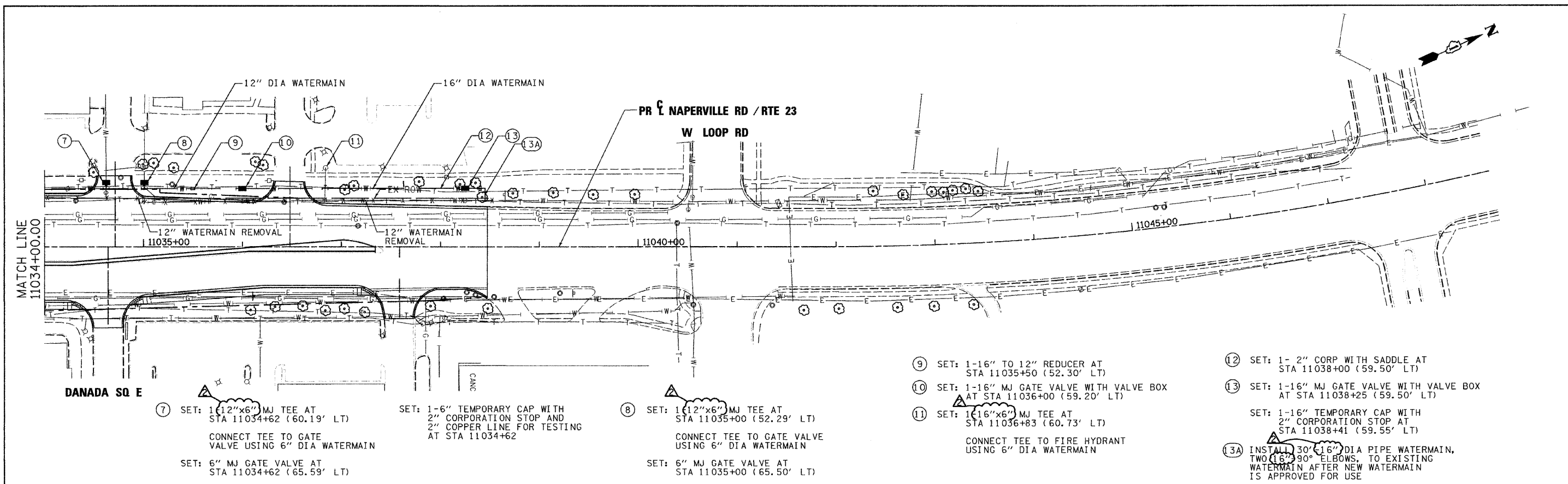
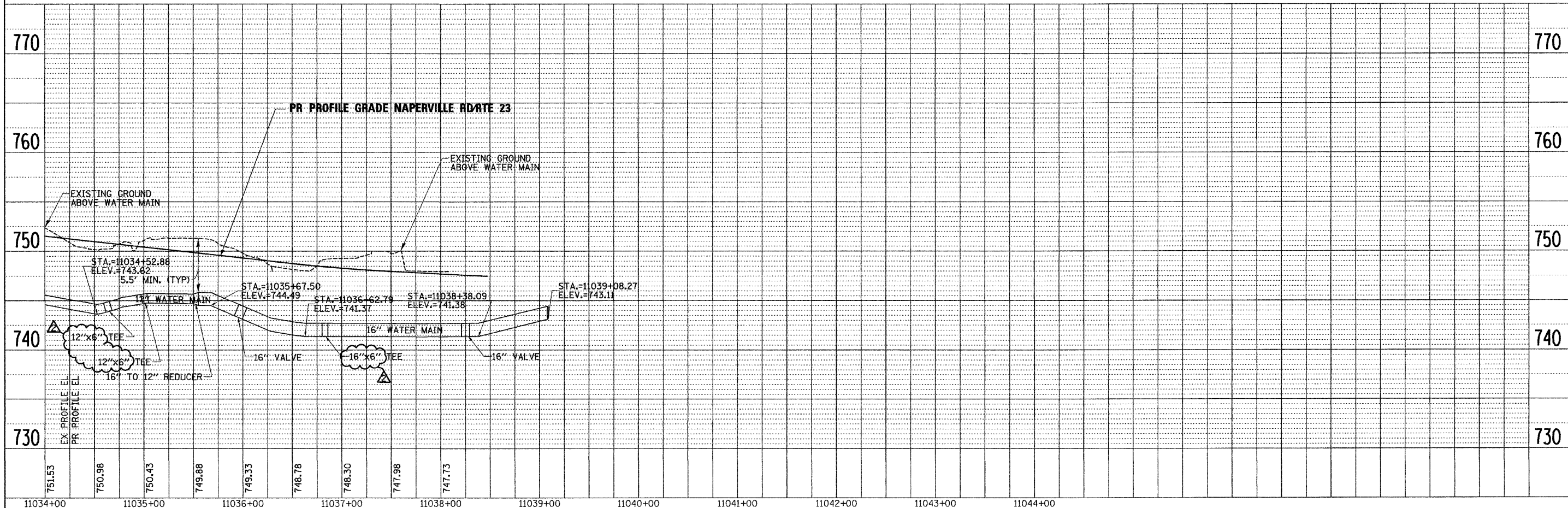


PLAN	SURVEYED	DATE
NOTE BOOK	GRADES CHECKED	
NO.	BY	
	ALIGNED	
	NOTED	
	STRUCTURE	
	ROTATIONS	
	CHFD	



- ⑦ SET: 1 (12"x6") MJ TEE AT STA 11034+62 (60.19' LT)  
CONNECT TEE TO GATE VALVE USING 6" DIA WATERMAIN  
SET: 6" MJ GATE VALVE AT STA 11034+62 (65.59' LT)
- SET: 1-6" TEMPORARY CAP WITH 2" CORPORATION STOP AND 2" COPPER LINE FOR TESTING AT STA 11034+62
- ⑧ SET: 1 (12"x6") MJ TEE AT STA 11035+00 (52.29' LT)  
CONNECT TEE TO GATE VALVE USING 6" DIA WATERMAIN  
SET: 6" MJ GATE VALVE AT STA 11035+00 (65.50' LT)
- ⑨ SET: 1-16" TO 12" REDUCER AT STA 11035+50 (52.30' LT)
- ⑩ SET: 1-16" MJ GATE VALVE WITH VALVE BOX AT STA 11036+00 (59.20' LT)
- ⑪ SET: 1 (16"x6") MJ TEE AT STA 11036+83 (60.73' LT)  
CONNECT TEE TO FIRE HYDRANT USING 6" DIA WATERMAIN
- ⑫ SET: 1- 2" CORP WITH SADDLE AT STA 11038+00 (59.50' LT)
- ⑬ SET: 1-16" MJ GATE VALVE WITH VALVE BOX AT STA 11038+25 (59.50' LT)
- SET: 1-16" TEMPORARY CAP WITH 2" CORPORATION STOP AT STA 11038+41 (59.55' LT)
- ⑬A INSTALL 30' 16" DIA PIPE WATERMAIN, TWO (16" 90° ELBOWS, TO EXISTING WATERMAIN AFTER NEW WATERMAIN IS APPROVED FOR USE

PROFILE	SURVEYED	DATE
NOTE BOOK	GRADES CHECKED	
NO.	BY	
	ALIGNED	
	NOTED	
	STRUCTURE	
	ROTATIONS	
	CHFD	



11034+00	11035+00	11036+00	11037+00	11038+00	11039+00	11040+00	11041+00	11042+00	11043+00	11044+00
751.53	750.98	750.43	749.88	749.33	748.78	748.30	747.98	747.73		

FILE NAME =	DESIGNED - JMM	REVISED - ADDENDUM A -1/10/11
...\\D162419-shr\wm_plnpr\19.dgn	DRAWN - TMB	REVISED -
USER NAME = tblank	CHECKED - RMT	REVISED -
PLOT DATE = 1/10/2011	DATE - 12/6/10	REVISED -

**benesch**

**STATE OF ILLINOIS  
DEPARTMENT OF TRANSPORTATION**

**WATERMAIN PLAN AND PROFILE  
NAPERVILLE RD**

SCALE: 1"=50' SHEET NO. 9 OF 11 SHEETS STA. 1034+00 TO STA. POE

F.A.P. RTE.	SECTION	COUNTY	TOTAL SHEETS	SHEET NO.
365	(57 & 58)WRS-2	DUPAGE	681	293
			CONTRACT NO. 62419	
ILLINOIS FED. AID PROJECT				