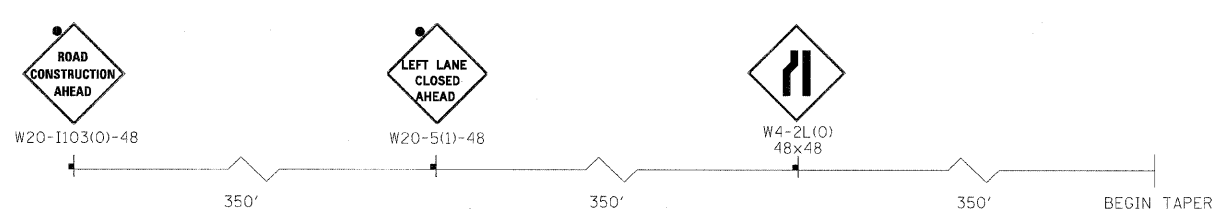


SEE ADVANCE SIGNAGE
NORTHBOUND NAPERVILLE ROAD



ADVANCE SIGNING FOR NORTHBOUND NAPERVILLE ROAD

LEGEND		
	WORK AREA	① WET TEMPORARY PAVEMENT MARKING TAPE, TYPE III, LETTERS AND SYMBOLS (WHITE)
	TEMPORARY PAVEMENT PLACED PREVIOUS STAGE	② WET TEMPORARY PAVEMENT MARKING TAPE, TYPE III, 4 INCH (WHITE)
	TEMPORARY PAVEMENT PLACED THIS STAGE	③ WET TEMPORARY PAVEMENT MARKING TAPE, TYPE III, 4 INCH (YELLOW)
	FLASHING ARROW BOARD	④ WET TEMPORARY PAVEMENT MARKING TAPE, TYPE III, 6 INCH (WHITE)
	TRAFFIC LANE	⑤ WET TEMPORARY PAVEMENT MARKING TAPE, TYPE III, 12 INCH (WHITE)
	TYPE III BARRICADES	⑥ WET TEMPORARY PAVEMENT MARKING TAPE, TYPE III, 12 INCH (YELLOW)
	VERTICAL PANELS @ 200' UNLESS OTHERWISE SHOWN	⑦ WET TEMPORARY PAVEMENT MARKING TAPE, TYPE III, 24 INCH (WHITE)
	TEMPORARY SIGN	
	DRUMS @ 50' CENTERS UNLESS OTHERWISE SHOWN	
	IMPACT ATTENUATOR	
	PROPOSED ROW	
	EXISTING ROW	
	TEMPORARY EASEMENT	

FILE NAME =	DESIGNED - JMM	REVISED -
...\\D162419-ahs-NAP_staging2-2-18.dgn	DRAWN - TMB	REVISED -
USER NAME = tolenk	CHECKED - RMT	REVISED -
PLOT DATE = 12/7/2010	DATE - 12/6/10	REVISED -

benesch

**STATE OF ILLINOIS
DEPARTMENT OF TRANSPORTATION**

**MAINTENANCE OF TRAFFIC PLAN
STAGE 2-2 NAPERVILLE**

SCALE: 1"=50' SHEET NO. 71 OF 112 SHEETS STA. TO STA.

F.A.P. RTE. 365	SECTION (57 & 58)WRS-2	COUNTY	TOTAL SHEETS 681	SHEET NO. 163
		DUPAGE	CONTRACT NO. 62419	
ILLINOIS FED. AID PROJECT				