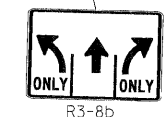
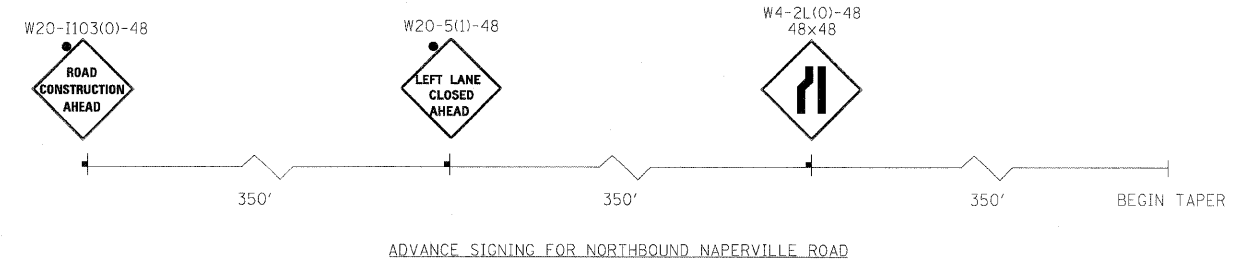


SEE ADVANCE SIGNAGE  
NORTHBOUND NAPERVILLE ROAD



- LEGEND**
- WORK AREA
  - TEMPORARY PAVEMENT PLACED PREVIOUS STAGE
  - TEMPORARY PAVEMENT PLACED THIS STAGE
  - FLASHING ARROW BOARD
  - TRAFFIC LANE
  - TYPE III BARRICADES
  - VERTICAL PANELS @ 200' UNLESS OTHERWISE SHOWN
  - TEMPORARY SIGN
  - DRUMS @ 50' CENTERS UNLESS OTHERWISE SHOWN
  - IMPACT ATTENUATOR
  - PROPOSED ROW
  - EXISTING ROW
  - TEMPORARY EASEMENT
- ① WET TEMPORARY PAVEMENT MARKING TAPE, TYPE III, LETTERS AND SYMBOLS (WHITE)
  - ② WET TEMPORARY PAVEMENT MARKING TAPE, TYPE III, 4 INCH (WHITE)
  - ③ WET TEMPORARY PAVEMENT MARKING TAPE, TYPE III, 4 INCH (YELLOW)
  - ④ WET TEMPORARY PAVEMENT MARKING TAPE, TYPE III, 6 INCH (WHITE)
  - ⑤ WET TEMPORARY PAVEMENT MARKING TAPE, TYPE III, 12 INCH (WHITE)
  - ⑥ WET TEMPORARY PAVEMENT MARKING TAPE, TYPE III, 12 INCH (YELLOW)
  - ⑦ WET TEMPORARY PAVEMENT MARKING TAPE, TYPE III, 24 INCH (WHITE)



FILE NAME =	DESIGNED - JMM	REVISED -	<b>benesch</b>	<b>STATE OF ILLINOIS DEPARTMENT OF TRANSPORTATION</b>	<b>MAINTENANCE OF TRAFFIC PLAN STAGE 3 NAPERVILLE</b>			F.A.P. RTE.	SECTION	COUNTY	TOTAL SHEETS	SHEET NO.
... \UI62411-sh1-NAP_staging3-1B.dgn	DRAWN - TMB	REVISED -			365	(57 & 58)WRS-2	DUPAGE	681	195			
USER NAME = tblank	CHECKED - RMT	REVISED -			CONTRACT NO. 62419							
PLT DATE = 12/7/20:0	DATE - 12/6/10	REVISED -			ILLINOIS FED. AID PROJECT							

SCALE: 1"=50' SHEET NO.103 OF 112 SHEETS STA. TO STA.