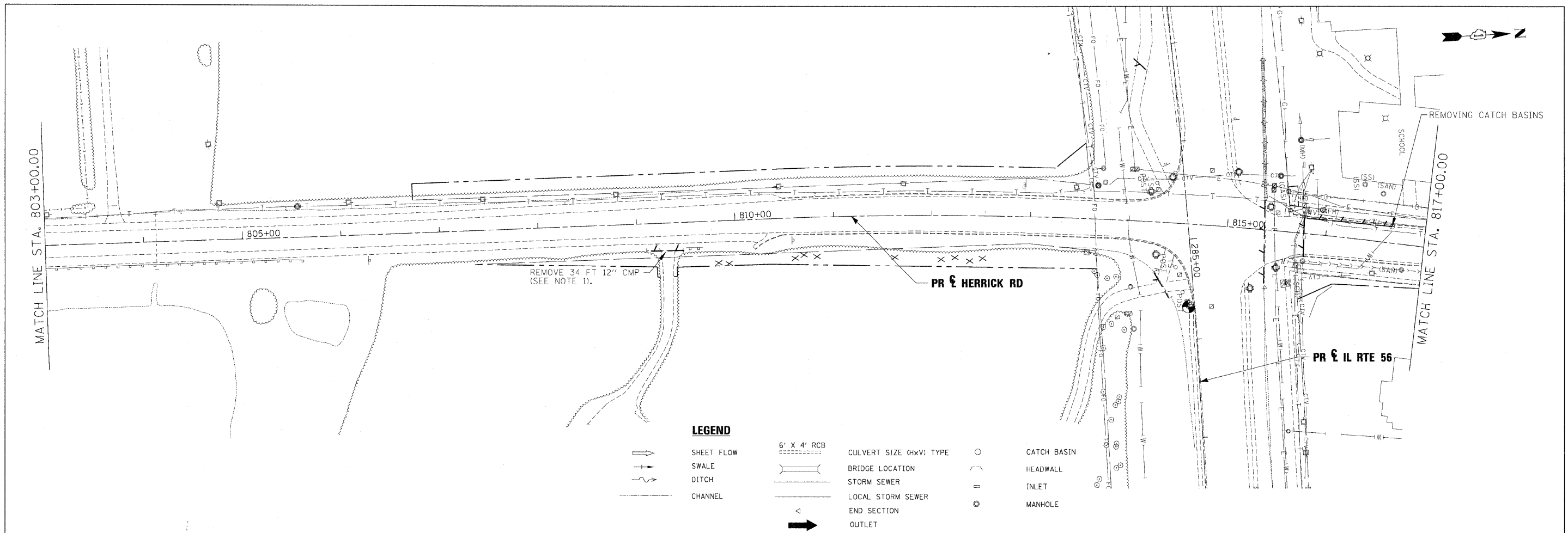


PLAN	DESIGNED	DATE
	PLOTTED	
	ALIGNMENT CHECKED	
	NOTE BOOK	
	NO.	
	PAID FILE NAME	

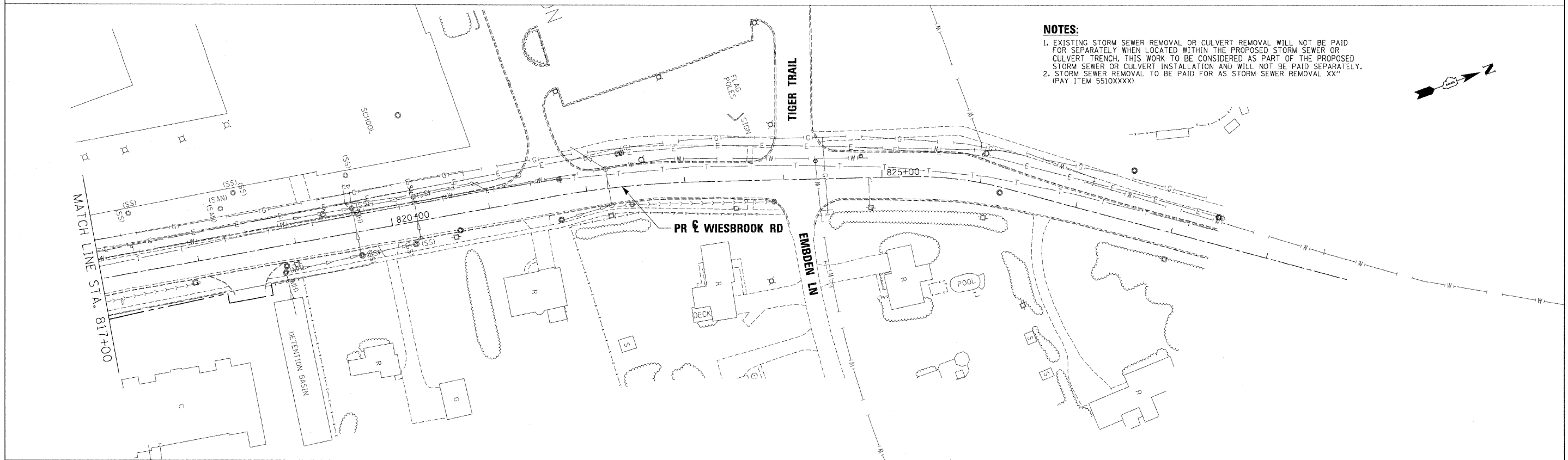
PROFILE	DESIGNED	DATE
	PLOTTED	
	GRADES CHECKED	
	NOTE BOOK	
	STRUCTURE	
	NOTATIONS CHKD	
	NO.	



LEGEND

	SHEET FLOW		6' X 4' RCB		CULVERT SIZE (HxV) TYPE		CATCH BASIN
	SWALE		BRIDGE LOCATION		STORM SEWER		HEADWALL
	DITCH		LOCAL STORM SEWER		END SECTION		INLET
	CHANNEL		OUTLET		MANHOLE		

NOTES:
 1. EXISTING STORM SEWER REMOVAL OR CULVERT REMOVAL WILL NOT BE PAID FOR SEPARATELY WHEN LOCATED WITHIN THE PROPOSED STORM SEWER OR CULVERT TRENCH. THIS WORK TO BE CONSIDERED AS PART OF THE PROPOSED STORM SEWER OR CULVERT INSTALLATION AND WILL NOT BE PAID SEPARATELY.
 2. STORM SEWER REMOVAL TO BE PAID FOR AS STORM SEWER REMOVAL XX" (PAY ITEM 5510XXXX)



USER NAME =	DESIGNED - KEM	REVISED -
	DRAWN - KEM	REVISED -
	CHECKED - LSM	REVISED -
PLOT DATE =	DATE - 12/6/10	REVISED -



**STATE OF ILLINOIS
 DEPARTMENT OF TRANSPORTATION**

DRAINAGE REMOVAL PLAN IL RTE 56	
SCALE: 1"=50'	SHEET NO. 7 OF 9 SHEETS STA. 803+00.00 TO STA. 829+84.41

F.A.P. RTE.	SECTION	COUNTY	TOTAL SHEETS	SHEET NO.
365	(57 & 58)WRS-2	DUPAGE	681	258
CONTRACT NO. 62419			ILLINOIS FED. AID PROJECT	