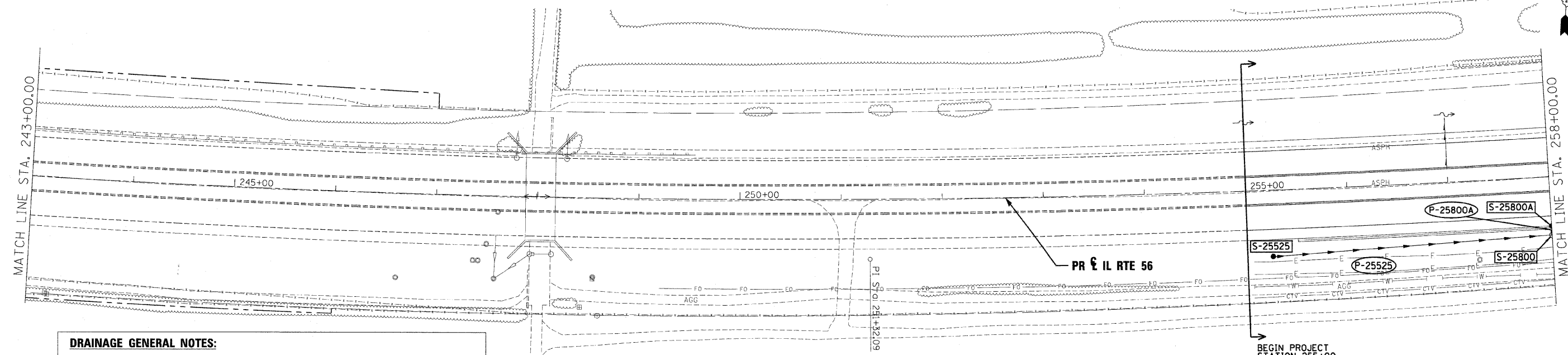


DATE	BY
REVISIONS	
NO. 1	
NO. 2	
NO. 3	
NO. 4	
NO. 5	
NO. 6	
NO. 7	
NO. 8	
NO. 9	
NO. 10	
NO. 11	
NO. 12	
NO. 13	
NO. 14	
NO. 15	
NO. 16	
NO. 17	
NO. 18	
NO. 19	
NO. 20	
NO. 21	
NO. 22	
NO. 23	
NO. 24	
NO. 25	
NO. 26	
NO. 27	
NO. 28	
NO. 29	
NO. 30	
NO. 31	
NO. 32	
NO. 33	
NO. 34	
NO. 35	
NO. 36	
NO. 37	
NO. 38	
NO. 39	
NO. 40	
NO. 41	
NO. 42	
NO. 43	
NO. 44	
NO. 45	
NO. 46	
NO. 47	
NO. 48	
NO. 49	
NO. 50	
NO. 51	
NO. 52	
NO. 53	
NO. 54	
NO. 55	
NO. 56	
NO. 57	
NO. 58	
NO. 59	
NO. 60	
NO. 61	
NO. 62	
NO. 63	
NO. 64	
NO. 65	
NO. 66	
NO. 67	
NO. 68	
NO. 69	
NO. 70	
NO. 71	
NO. 72	
NO. 73	
NO. 74	
NO. 75	
NO. 76	
NO. 77	
NO. 78	
NO. 79	
NO. 80	
NO. 81	
NO. 82	
NO. 83	
NO. 84	
NO. 85	
NO. 86	
NO. 87	
NO. 88	
NO. 89	
NO. 90	
NO. 91	
NO. 92	
NO. 93	
NO. 94	
NO. 95	
NO. 96	
NO. 97	
NO. 98	
NO. 99	
NO. 100	

DATE	BY
REVISIONS	
NO. 1	
NO. 2	
NO. 3	
NO. 4	
NO. 5	
NO. 6	
NO. 7	
NO. 8	
NO. 9	
NO. 10	
NO. 11	
NO. 12	
NO. 13	
NO. 14	
NO. 15	
NO. 16	
NO. 17	
NO. 18	
NO. 19	
NO. 20	
NO. 21	
NO. 22	
NO. 23	
NO. 24	
NO. 25	
NO. 26	
NO. 27	
NO. 28	
NO. 29	
NO. 30	
NO. 31	
NO. 32	
NO. 33	
NO. 34	
NO. 35	
NO. 36	
NO. 37	
NO. 38	
NO. 39	
NO. 40	
NO. 41	
NO. 42	
NO. 43	
NO. 44	
NO. 45	
NO. 46	
NO. 47	
NO. 48	
NO. 49	
NO. 50	
NO. 51	
NO. 52	
NO. 53	
NO. 54	
NO. 55	
NO. 56	
NO. 57	
NO. 58	
NO. 59	
NO. 60	
NO. 61	
NO. 62	
NO. 63	
NO. 64	
NO. 65	
NO. 66	
NO. 67	
NO. 68	
NO. 69	
NO. 70	
NO. 71	
NO. 72	
NO. 73	
NO. 74	
NO. 75	
NO. 76	
NO. 77	
NO. 78	
NO. 79	
NO. 80	
NO. 81	
NO. 82	
NO. 83	
NO. 84	
NO. 85	
NO. 86	
NO. 87	
NO. 88	
NO. 89	
NO. 90	
NO. 91	
NO. 92	
NO. 93	
NO. 94	
NO. 95	
NO. 96	
NO. 97	
NO. 98	
NO. 99	
NO. 100	

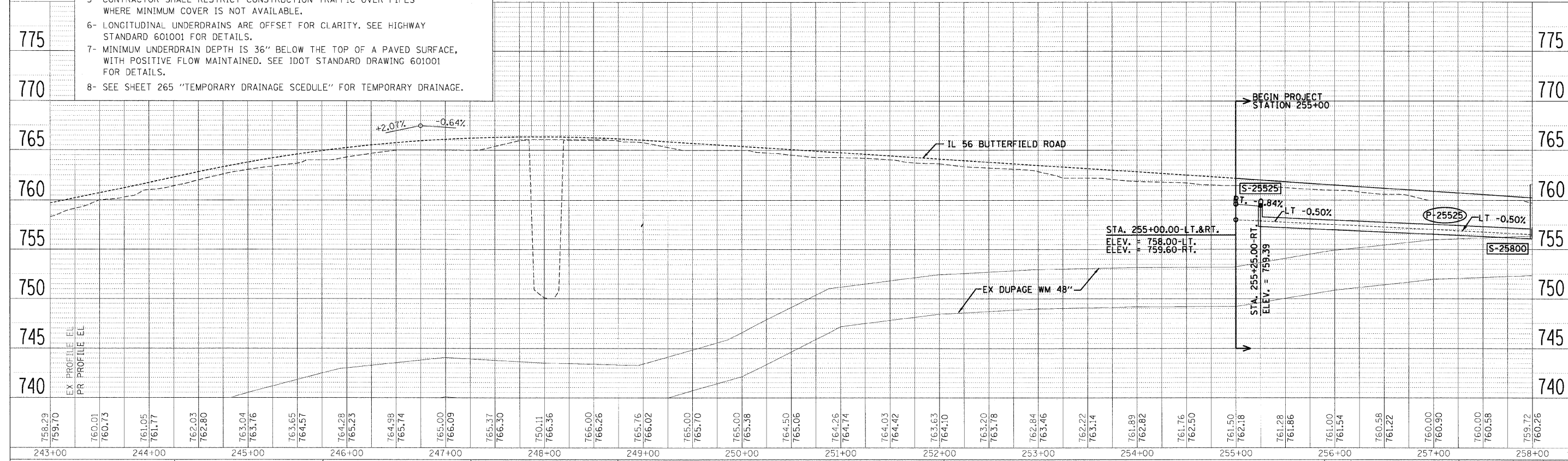
S-XXXX STRUCTURE NUMBER (TYPICAL FOR ALL SHEETS)
P-XXX PIPE NUMBER (TYPICAL FOR ALL SHEETS)



- DRAINAGE GENERAL NOTES:**
- 1- OFFSET AND RIM ELEVATIONS FOR FRAME AND LIDS T-1 AND T-8 GRATES ARE TO THE CENTER OF STRUCTURES.
 - 2- OFFSET AND RIM ELEVATIONS FOR FRAME AND GRATE T-10 IS TO THE EDGE OF SHOULDER.
 - 3- OFFSET AND RIM ELEVATION FOR FRAME AND GRATE TYPE 11V AND T-24 ARE TO THE EDGE OF PAVEMENT.
 - 4- OFFSET AND INVERT ELEVATIONS FOR FLARED END SECTIONS ARE TO THE OUTFALL EDGE OF STRUCTURES.
 - 5- CONTRACTOR SHALL RESTRICT CONSTRUCTION TRAFFIC OVER PIPES WHERE MINIMUM COVER IS NOT AVAILABLE.
 - 6- LONGITUDINAL UNDERDRAINS ARE OFFSET FOR CLARITY. SEE HIGHWAY STANDARD 601001 FOR DETAILS.
 - 7- MINIMUM UNDERDRAIN DEPTH IS 36" BELOW THE TOP OF A PAVED SURFACE, WITH POSITIVE FLOW MAINTAINED. SEE IDOT STANDARD DRAWING 601001 FOR DETAILS.
 - 8- SEE SHEET 265 "TEMPORARY DRAINAGE SCHEDULE" FOR TEMPORARY DRAINAGE.

LEGEND

--- FLOODPLAIN BOUNDARY	6' X 4' RCB	--- CULVERT SIZE (HxV) TYPE	--- PROPOSED STORM SEWER	○ CATCH BASIN
- - - FLOODWAY BOUNDARY	▽	--- STORM SEWER	○ PROPOSED CATCH BASIN	⌋ HEADWALL
→ SHEET FLOW	△	--- END SECTION	○ PROPOSED MANHOLE	○ INLET
→ SWALE	↔	--- DITCH HIGH POINT	○ PROPOSED END SECTION	○ MANHOLE
→ DITCH	- F -	--- FURROW	○ PROPOSED DITCH	⌋ ADJUST
--- CHANNEL	---	--- 4" PIPE UNDERDRAIN	⌋ PROPOSED HEADWALL	



FILE NAME =	DESIGNED - KEM	REVISED -		STATE OF ILLINOIS DEPARTMENT OF TRANSPORTATION		DRAINAGE PLAN AND PROFILE IL RTE 56		F.A.P. RTE. 365	SECTION (57 & 58)WRS-2	COUNTY DUPAGE	TOTAL SHEETS 681	SHEET NO. 266	
USER NAME =	DRAWN - KEM	REVISED -		SCALE: 1"=50'		SHEET NO. 1	OF 18 SHEETS	STA. 243+00.00 TO STA. 258+00.00	ILLINOIS FED. AID PROJECT		CONTRACT NO. 62419		
CHECKED - LSM	REVISED -												
DATE - 12/6/10	REVISED -												