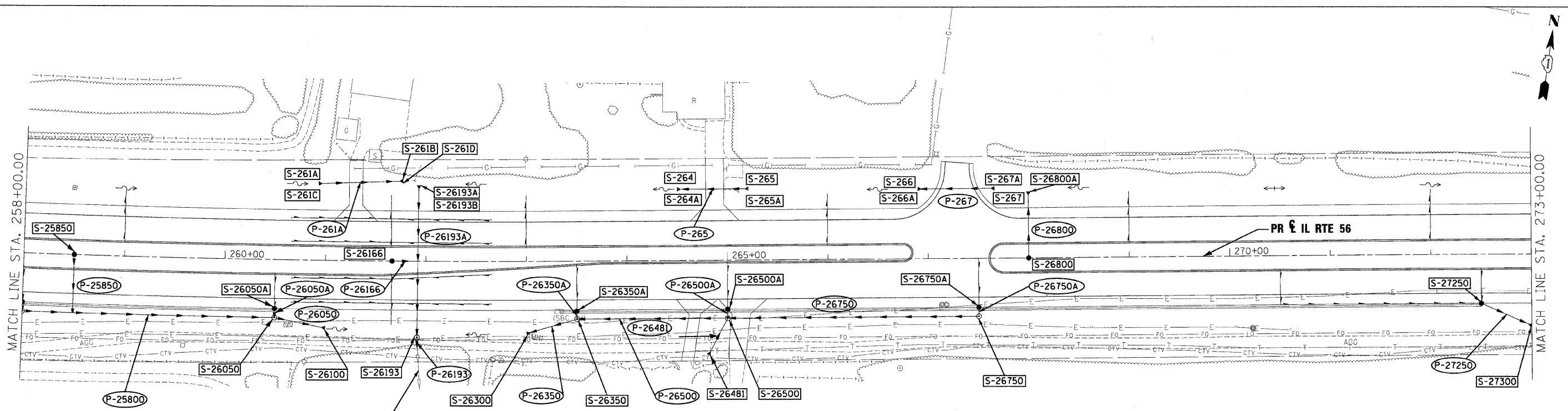


PLAN	REVISIONS	DATE
NO.	BY	
NO.	BY	
NO.	BY	
NO.	BY	
NO.	BY	
NO.	BY	
NO.	BY	
NO.	BY	
NO.	BY	
NO.	BY	

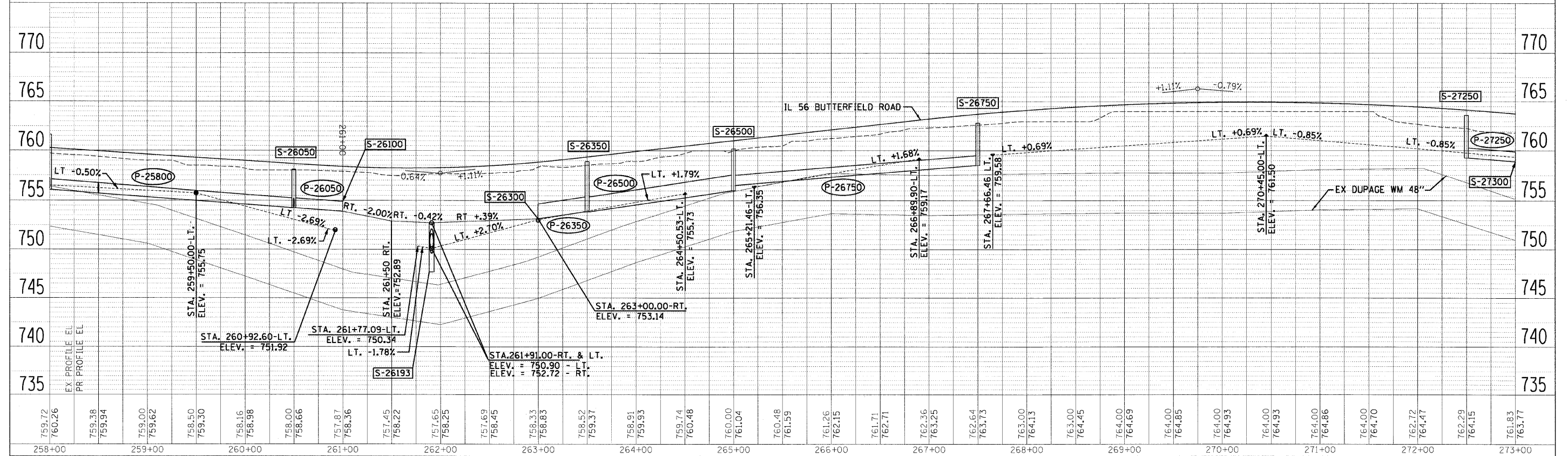
PROFILE	REVISIONS	DATE
NO.	BY	
NO.	BY	
NO.	BY	
NO.	BY	
NO.	BY	
NO.	BY	
NO.	BY	
NO.	BY	
NO.	BY	
NO.	BY	



EXISTING 24" DIA PIPE SHALL BE MAINTAINED

LEGEND

- FLOODPLAIN BOUNDARY
- FLOODWAY BOUNDARY
- SHEET FLOW
- SWALE
- DITCH
- CHANNEL
- 6' X 4' RCB
- ▽ STORM SEWER
- △ END SECTION
- ↔ DITCH HIGH POINT
- F-F- FURROW
- 4" PIPE UNDERDRAIN
- PROPOSED STORM SEWER
- PROPOSED CATCH BASIN
- PROPOSED MANHOLE
- ◻ PROPOSED END SECTION
- ↔ PROPOSED DITCH
- ↔ PROPOSED HEADWALL
- CATCH BASIN
- HEADWALL
- INLET
- MANHOLE
- ADJUST



FILE NAME =	DESIGNED - KEM	REVISED -		STATE OF ILLINOIS DEPARTMENT OF TRANSPORTATION		DRAINAGE PLAN AND PROFILE IL RTE 56		F.A.P. RTE.	SECTION	COUNTY	TOTAL SHEETS	SHEET NO.
USER NAME =	DRAWN - KEM	REVISED -						365	157 & 58WRS-2	DUPAGE	681	267
PLOT DATE =	CHECKED - LSM	REVISED -						CONTRACT NO. 62419				
	DATE - 12/6/10	REVISED -						ILLINOIS FED. AID PROJECT				

SCALE: 1"=50' SHEET NO. 2 OF 18 SHEETS STA. 258+00.00 TO STA. 273+00.00