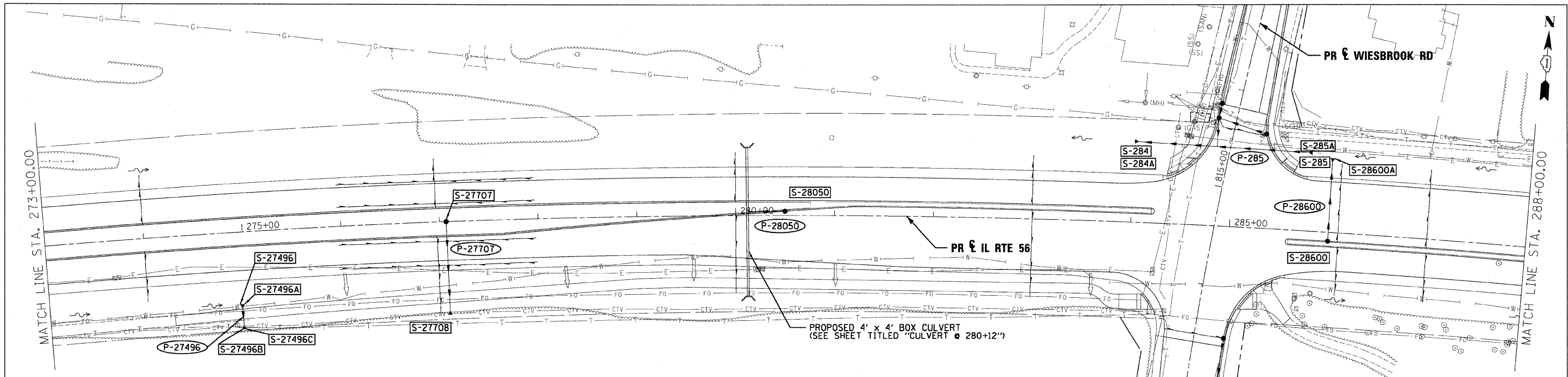


PLAN	SURVEYED	BY	DATE
	PLOTTED		
	ALIGNED		
	CHECKED		
	NO. 1		
	NO. 2		
	NO. 3		
	NO. 4		
	NO. 5		
	NO. 6		
	NO. 7		
	NO. 8		
	NO. 9		
	NO. 10		

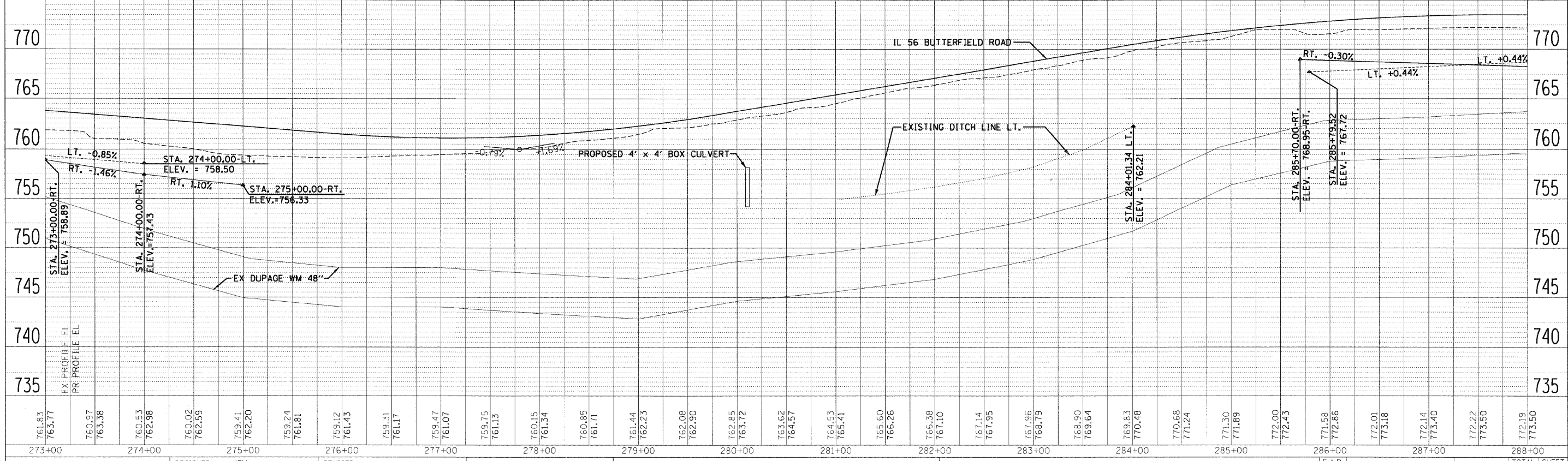
PROFILE	DESIGNED	BY	DATE
	DRAWN		
	CHECKED		
	NO. 1		
	NO. 2		
	NO. 3		
	NO. 4		
	NO. 5		
	NO. 6		
	NO. 7		
	NO. 8		
	NO. 9		
	NO. 10		



**LEGEND**

- FLOODPLAIN BOUNDARY
- FLOODWAY BOUNDARY
- SHEET FLOW
- SWALE
- DITCH
- CHANNEL
- 6' X 4' RCB
- STORM SEWER
- △ END SECTION
- ↔ DITCH HIGH POINT
- F-F- FURROW
- 4" PIPE UNDERDRAIN
- CULVERT SIZE (HxV) TYPE
- PROPOSED STORM SEWER
- PROPOSED CATCH BASIN
- PROPOSED MANHOLE
- PROPOSED END SECTION
- PROPOSED DITCH
- PROPOSED HEADWALL
- CATCH BASIN
- HEADWALL
- INLET
- MANHOLE
- ADJUST

SEE SHEET 274 FOR CALLOUTS OF STRUCTURES AND PIPES ALONG HERRICK AND WIESBROOK ROADS.



FILE NAME =	DESIGNED - KEM	REVISED -		STATE OF ILLINOIS DEPARTMENT OF TRANSPORTATION				DRAINAGE PLAN AND PROFILE IL RTE 56				F.A.P. R.T. = 365	SECTION (57 & 58)WRS-2	COUNTY DUPAGE	TOTAL SHEETS 681	SHEET NO. 268	
USER NAME =	DRAWN - KEM	REVISED -		SCALE: 1"=50'				SHEET NO. 3 OF 18 SHEETS				STA. 273+00.00 TO STA. 288+00.00				CONTRACT NO. 62419	
PLLOT DATE =	CHECKED - LSM	REVISED -		DATE - 12/6/10				ILLINOIS FED. AID PROJECT									
	DATE - 12/6/10	REVISED -															