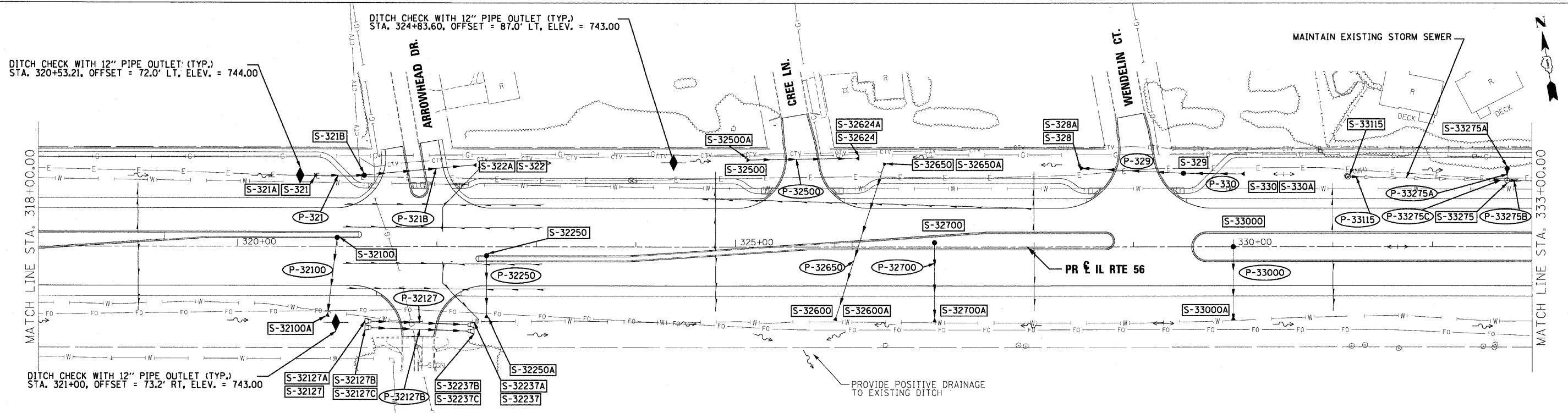


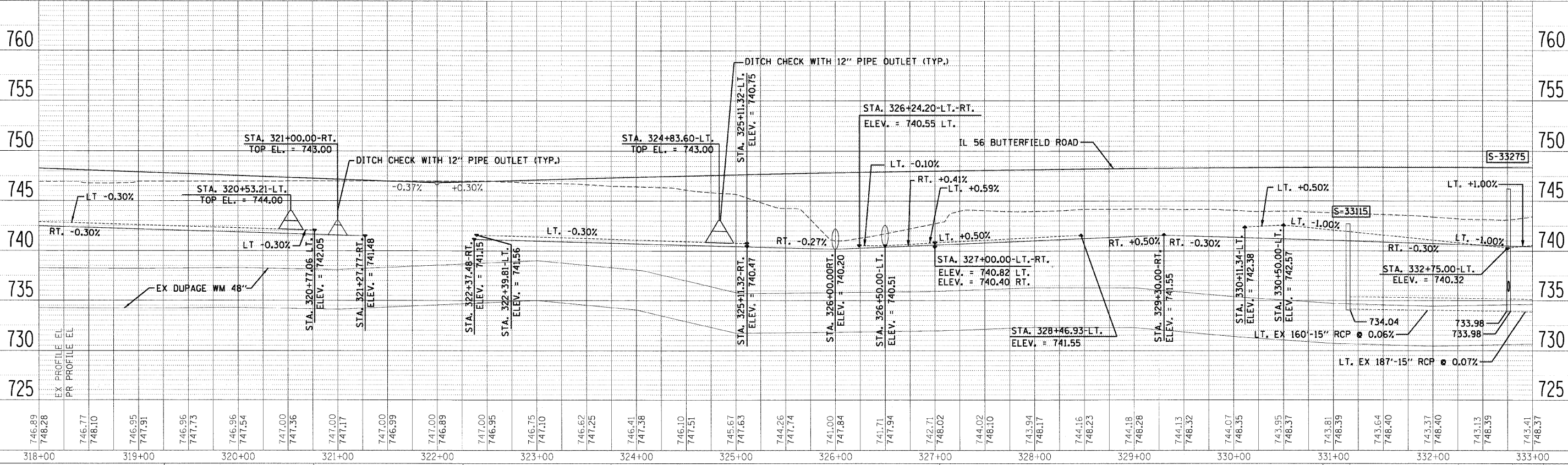
DATE	BY
DESIGNED	BY
DRAWN	BY
CHECKED	BY
DATE	BY

DATE	BY
DESIGNED	BY
DRAWN	BY
CHECKED	BY
DATE	BY



**LEGEND**

- FLOODPLAIN BOUNDARY
- FLOODWAY BOUNDARY
- SHEET FLOW
- SWALE
- DITCH
- CHANNEL
- 6' X 4' RCB
- CULVERT SIZE (HxV) TYPE
- STORM SEWER
- △ END SECTION
- ↔ DITCH HIGH POINT
- F-F- FURROW
- 4" PIPE UNDERDRAIN
- PROPOSED STORM SEWER
- PROPOSED CATCH BASIN
- PROPOSED MANHOLE
- PROPOSED END SECTION
- PROPOSED DITCH
- PROPOSED HEADWALL
- CATCH BASIN
- HEADWALL
- INLET
- MANHOLE
- ADJUST



FILE NAME =	DESIGNED - KEM	REVISD -		<b>STATE OF ILLINOIS DEPARTMENT OF TRANSPORTATION</b>				<b>DRAINAGE PLAN AND PROFILE IL RTE 56</b>				F.A.P. RTE. 365	SECTION 157 & 58 WRS-2	COUNTY DUPAGE	TOTAL SHEETS 681	SHEET NO. 271
USER NAME =	DRAWN - KEM	REVISD -										CONTRACT NO. 62419				
CHECKED - LSM	REVISD -	SCALE: 1"=50'										SHEET NO. 6 OF 18 SHEETS	STA. 318+00.00 TO STA. 333+00.00	ILLINOIS FED. AID PROJECT		
DATE - 12/6/10	REVISD -															