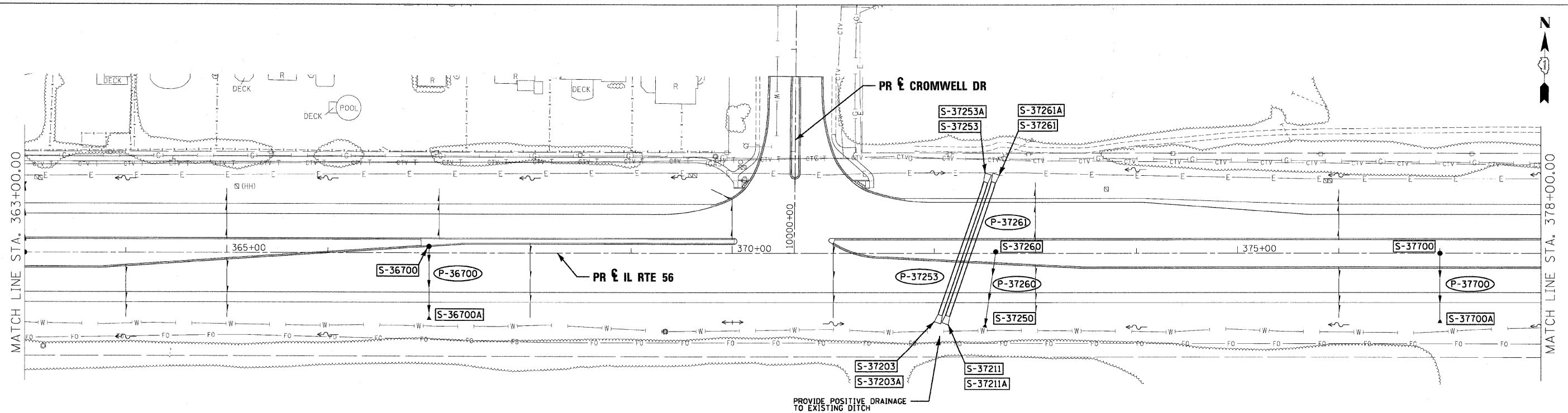


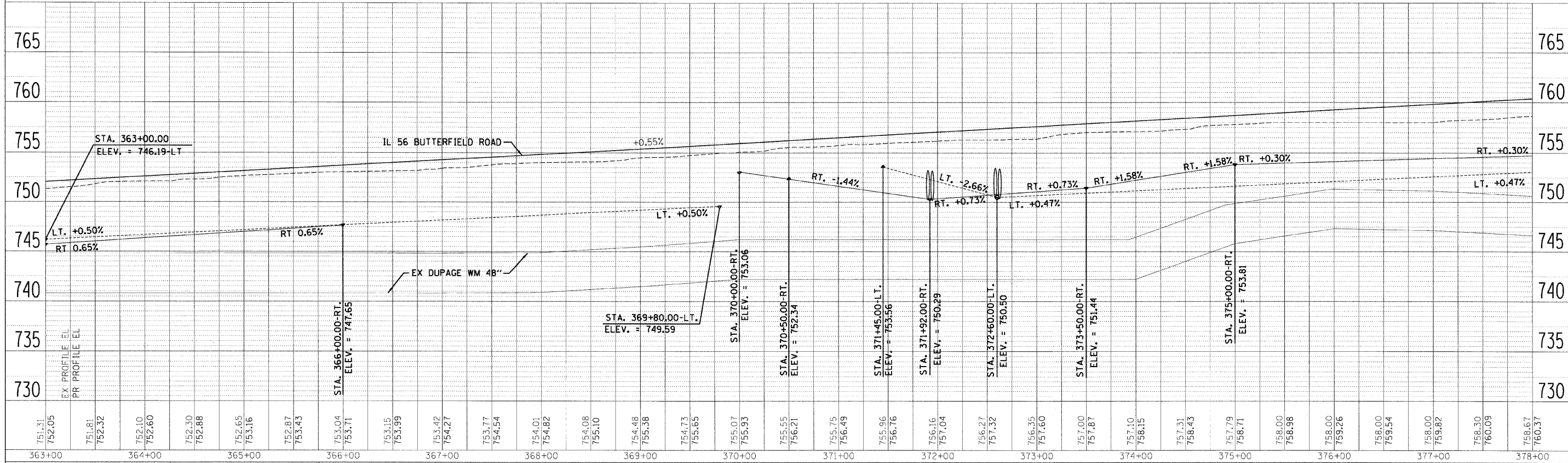
DATE	BY
DESIGNED	PLOTTED
ALIGNED	CHECKED
NOTE BOOK	NO.
CADD FILE NAME	
NO.	

DATE	BY
DESIGNED	PLOTTED
GRADES CHECKED	NOTATIONS CHK'D
NOTE BOOK	NO.
STRUCTURE	
NO.	



LEGEND

- FLOODPLAIN BOUNDARY
- FLOODWAY BOUNDARY
- SHEET FLOW
- SWALE
- DITCH
- CHANNEL
- 6' X 4' RCB
- △ CULVERT SIZE (HxV) TYPE
- △ STORM SEWER
- △ END SECTION
- ← DITCH HIGH POINT
- F-F- FURROW
- 4" PIPE UNDERDRAIN
- PROPOSED STORM SEWER
- PROPOSED CATCH BASIN
- PROPOSED MANHOLE
- PROPOSED END SECTION
- PROPOSED DITCH
- PROPOSED HEADWALL
- CATCH BASIN
- HEADWALL
- INLET
- MANHOLE
- ADJUST



FILE NAME =	DESIGNED - KEM	REVISED -		STATE OF ILLINOIS DEPARTMENT OF TRANSPORTATION	DRAINAGE PLAN AND PROFILE IL RTE 56	F.A.P. RTE.	SECTION	COUNTY	TOTAL SHEETS	SHEET NO.
USER NAME =	DRAWN - KEM	REVISED -				365	(57 & 58)WRS-2	DUPAGE	681	274
CHECKED - LSM	REVISOR -	REVISED -				CONTRACT NO. 62419				
DATE - 12/6/10	REVISOR -	REVISED -				ILLINOIS FED. AID PROJECT				

SCALE: 1"=50' SHEET NO. 9 OF 18 SHEETS STA. 363+00.00 TO STA. 378+00.00