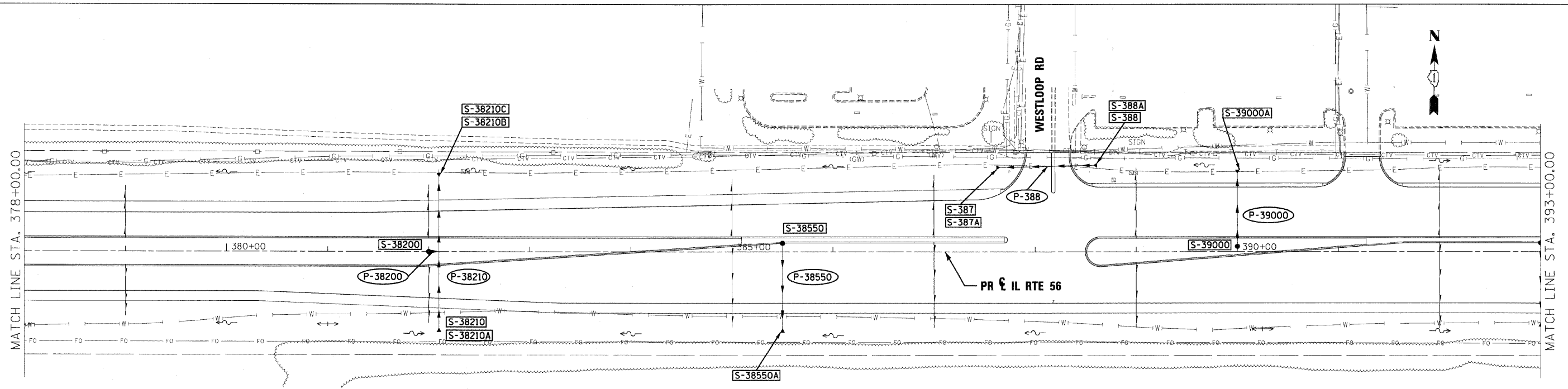


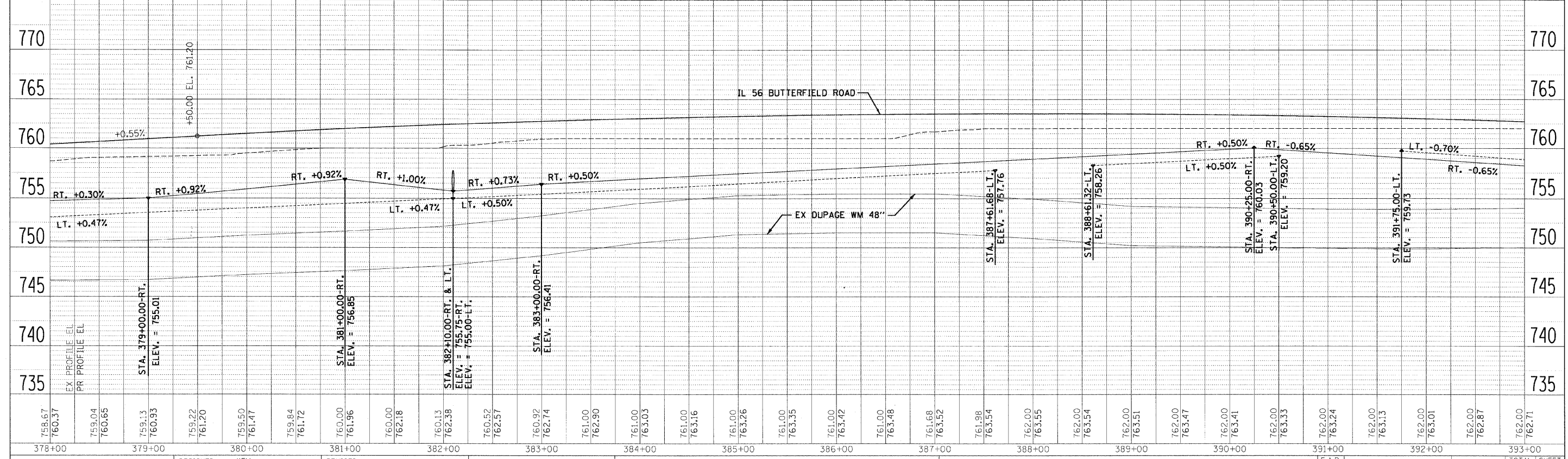
PLAN	DESIGNED	BY	DATE
	DRAWN		
	CHECKED		
	NOTED		
	FILE NAME		
	NO.		

PROFILE	DESIGNED	BY	DATE
	DRAWN		
	CHECKED		
	NOTED		
	FILE NAME		
	NO.		



LEGEND

- FLOODPLAIN BOUNDARY
- FLOODWAY BOUNDARY
- SHEET FLOW
- SWALE
- DITCH
- CHANNEL
- 6' X 4' RCB
- CULVERT SIZE (HxV) TYPE
- STORM SEWER
- △ END SECTION
- ← DITCH HIGH POINT
- F-F- FURROW
- 4" PIPE UNDERDRAIN
- PROPOSED STORM SEWER
- PROPOSED CATCH BASIN
- PROPOSED MANHOLE
- PROPOSED END SECTION
- PROPOSED DITCH
- PROPOSED HEADWALL
- CATCH BASIN
- HEADWALL
- INLET
- MANHOLE
- ADJUST



FILE NAME =	DESIGNED - KEM	REVISED -		STATE OF ILLINOIS DEPARTMENT OF TRANSPORTATION		DRAINAGE PLAN AND PROFILE IL RTE 56		F.A.P. R.T.E. = 365	SECTION (57 & 58)WRS-2	COUNTY DUPAGE	TOTAL SHEETS 681	SHEET NO. 275	
USER NAME =	DRAWN - KEM	REVISED -		SCALE: 1"=50'		SHEET NO. 10 OF 18 SHEETS		STA. 378+00.00 TO STA. 393+00.00		CONTRACT NO. 62419			
PLOT DATE =	CHECKED - LSM	REVISED -		ILLINOIS FED. AID PROJECT									
	DATE - 12/6/10	REVISED -											