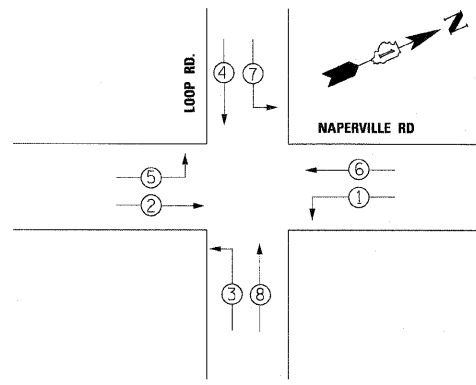


**TEMPORARY CONTROLLER SEQUENCE**



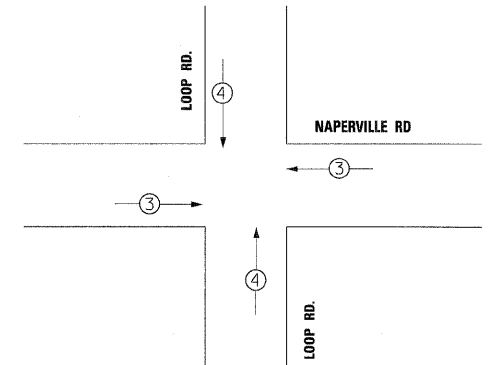
**TEMPORARY PHASE DESIGNATION DIAGRAM**

**LEGEND**

- DUAL ENTRY PHASE
- SINGLE ENTRY PHASE
- OL OVERLAP
- PEDESTRIAN PHASE
- NUMBER REFERS TO ASSOCIATED PHASE

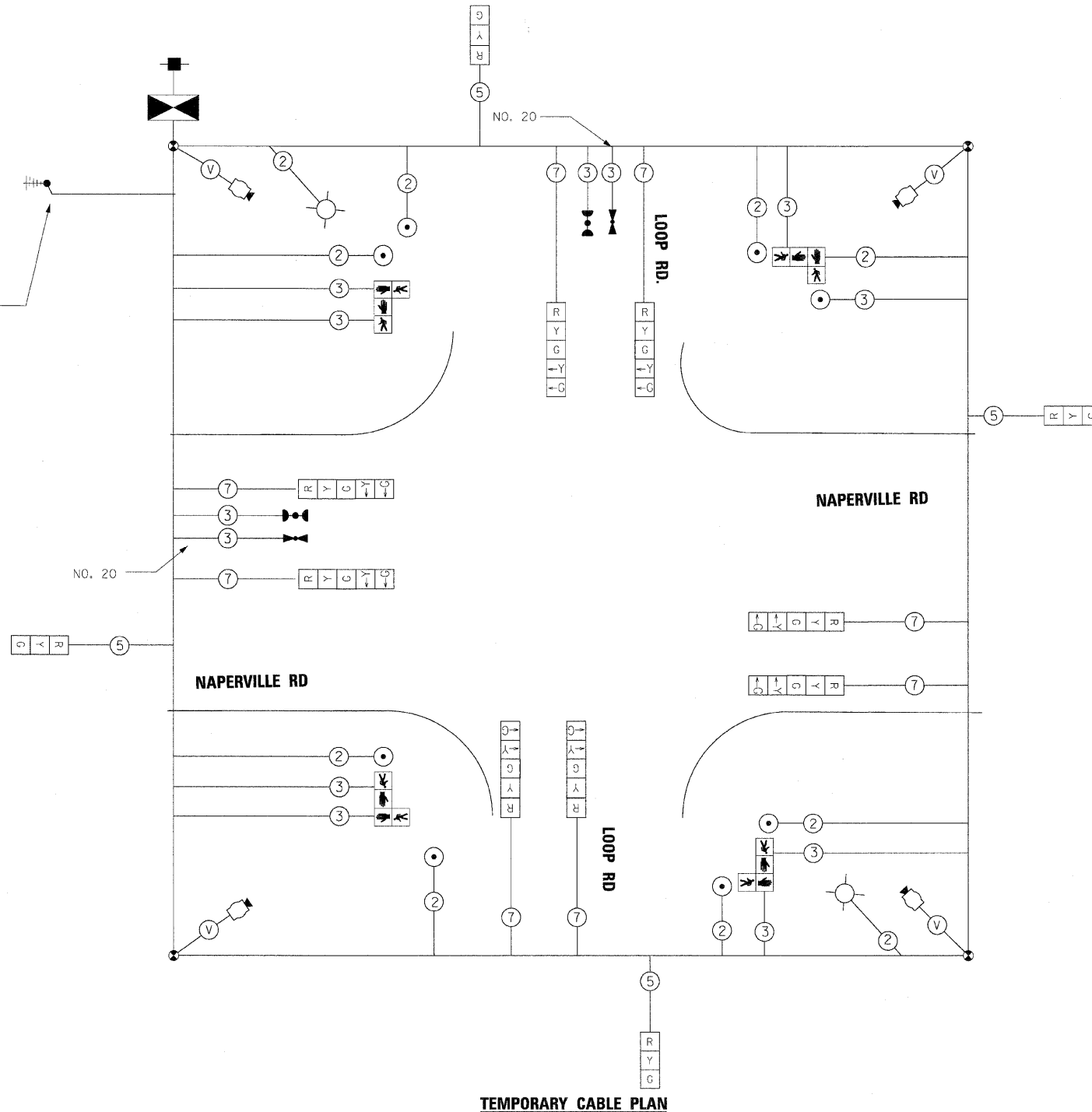
SUMMARY OF QUANTITIES		
DESCRIPTION	UNIT	TOTAL QUANTITY
TEMPORARY TRAFFIC SIGNAL INSTALLATION	EACH	1
TEMPORARY TRAFFIC SIGNAL TIMING	EACH	1

**TEMPORARY EMERGENCY VEHICLE PREEMPTION SEQUENCE**



TEMPORARY EMERGENCY VEHICLE PREEMPTORS		
EMERGENCY VEHICLE PREEMPTORS	3	4
MOVEMENT	← →	↑ ↓

TEMPORARY WIRELESS INTERCONNECT TO DANADA SQUARE



**TEMPORARY CABLE PLAN**

**CONSTRUCTION NOTES:**

- ① TEMPORARY RADIO INTERCONNECT SHALL NOT BE REMOVED UNTIL FIBER INTERCONNECT TO BUTTERFIELD RD. AND LOOP RD. IS INSTALLED AND OPERATIONAL.
- ② THE EXISTING TRAFFIC SIGNAL CLOSED LOOP SYSTEM OPERATION SHALL BE MAINTAINED DURING CONSTRUCTION
- ③ THE CONTRACTOR SHALL MAINTAIN THE EXISTING SIGNAL SYSTEM INTERCONNECT DURING TEMPORARY SIGNAL OPERATION.
- ④ PEDESTRIAN SIGNALS SHALL REMAIN IN OPERATION AT ALL TIMES WHILE THE TEMPORARY TRAFFIC SIGNALS ARE IN USE. ANY REQUIRED ADJUSTMENT, RELOCATION OR TEMPORARY CABLING REQUIRED TO MAINTAIN PEDESTRIAN SIGNAL OPERATIONS DURING CONSTRUCTION IS INCIDENTAL TO "TEMPORARY TRAFFIC SIGNAL INSTALLATION".

**NOTE:**  
THE TEMPORARY TRAFFIC SIGNAL CONTROLLER EQUIPMENT FOR THIS PROJECT SHALL BE "ECONOLITE" TO MATCH THE EXISTING ADJACENT SYSTEM.

RESTORATION OF WORK AREA. RESTORATION OF THE TRAFFIC SIGNAL WORK AREA SHALL BE INCIDENTAL TO THE RELATED PAY ITEM SUCH AS FOUNDATION, CONDUIT, HANDHOLE, TRENCH AND BACKFILL, ETC., AND NO EXTRA COMPENSATION SHALL BE ALLOWED. ALL ROADWAY SURFACES SUCH AS SHOULDERS, MEDIANS, SIDEWALKS, PAVEMENT, ETC. SHALL BE REPLACED IN KIND. ALL DAMAGE TO MOWED LAWNS SHALL BE REPLACED WITH AN APPROVED SOD, AND ALL DAMAGE TO UNMOVED FIELDS SHALL BE SEEDDED IN ACCORDANCE WITH STANDARD SPECIFICATIONS 252 AND 250 RESPECTIVELY.

I.D.O.T TRAFFIC SIGNAL INSTALLATION ELECTRICAL SERVICE REQUIREMENTS					TOTAL WATTAGE
TYPE	NO. LAMPS	WATTAGE INCAND.	LED	%OPERATION	
SIGNAL (RED)	12	-	17	0.50	102
(YELLOW)	12	-	25	0.25	75
(GREEN)	12	-	15	0.25	45
ARROW	16	-	12	0.10	19.2
PED. SIGNAL	4	-	25	1.00	100
CONTROLLER	1	-	100	1.00	100
ILLUM. SIGN	-	-	25	0.05	-
VIDEO SYSTEM	1	150	-	1.00	150
FLASHER				0.50	

ENERGY COSTS TO: TOTAL = 591.2

ILLINOIS DEPARTMENT OF TRANSPORTATION  
201 W. CENTER COURT  
SCHAMBURG, ILLINOIS 60196  
ENERGY SUPPLY CONTACT: JOSEPH STACHO  
PHONE: 630-424-5704  
COMPANY: COMED

FILE NAME =	DESIGNED - GHT	REVISED -
..._v162419-sh1-to-tempcas166.dgn	DRAWN - BDW	REVISED -
USER NAME = tblank	CHECKED - MPM	REVISED -
PLOT DATE = 12/7/2010	DATE - 12/6/10	REVISED -

**benesch**

STATE OF ILLINOIS  
DEPARTMENT OF TRANSPORTATION

TEMPORARY TRAFFIC SIGNAL CABLE PLAN, PHASE DESIGNATION DIAGRAM AND EVP SEQUENCE			
F.A.P. RTE. 365	SECTION (57 & 58)WRS-2	COUNTY DUPAGE	TOTAL SHEETS 681
SCALE: NTS		SHEET NO. 27 OF 27 SHEETS	STA. TO STA.
			CONTRACT NO. 62419
ILLINOIS FED. AID PROJECT			