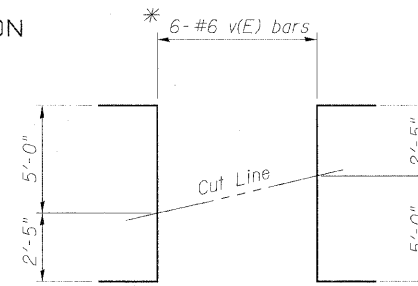
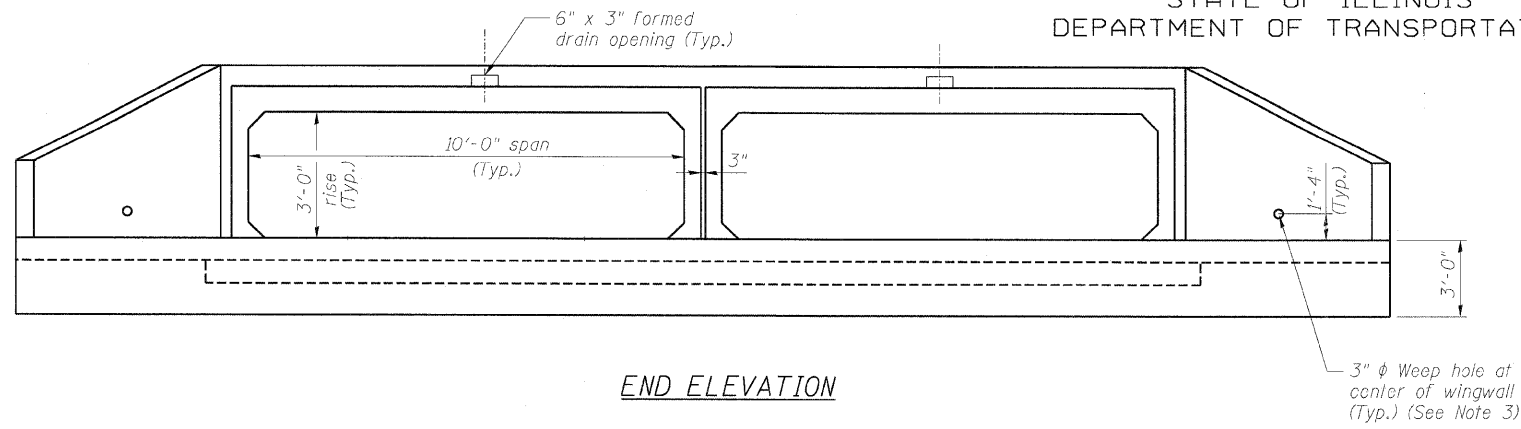


STATE OF ILLINOIS  
DEPARTMENT OF TRANSPORTATION

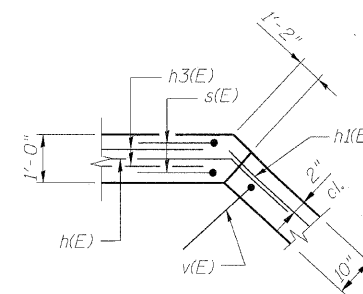
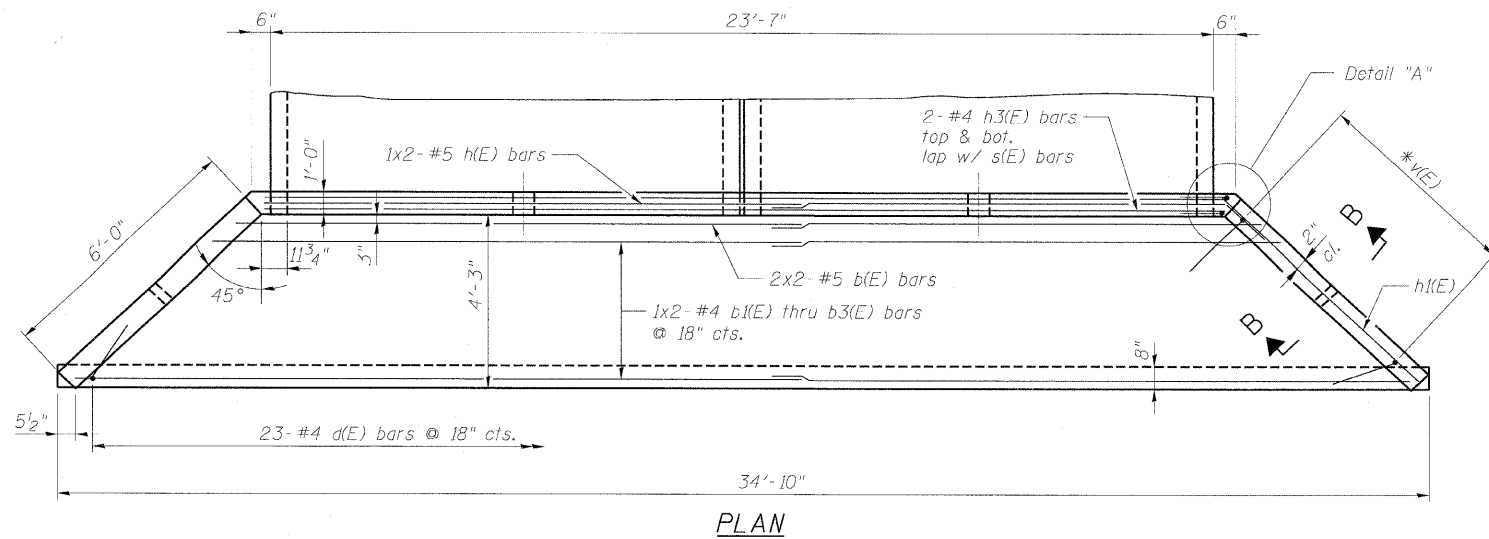


\* Order v(E) bars full length. Cut to fit as shown and use remainder of bars in other side of apron.

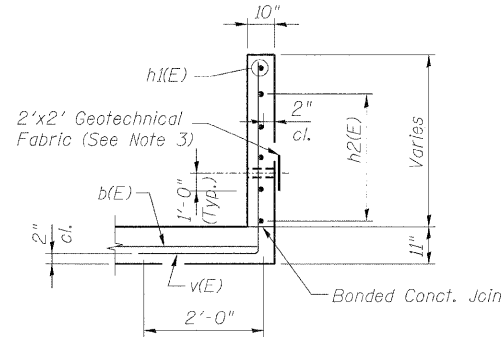
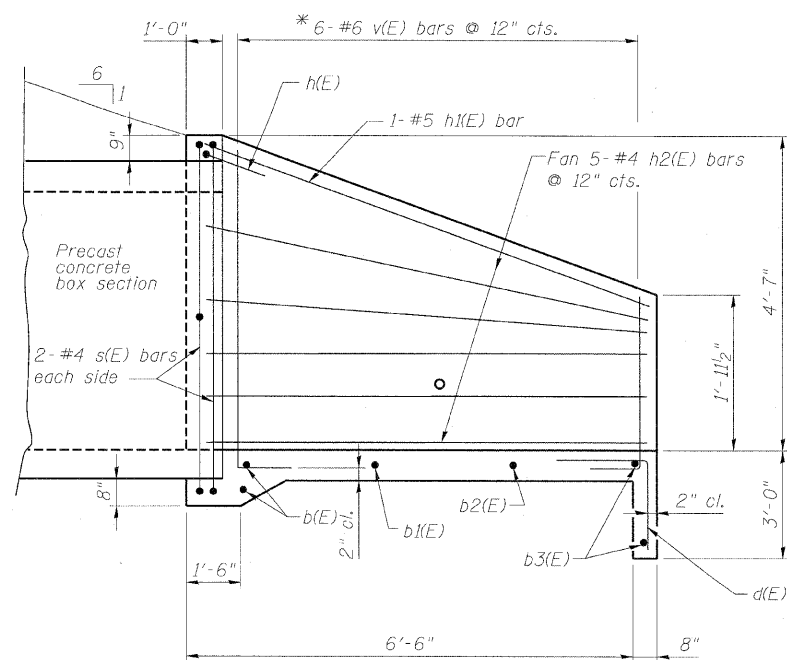
BILL OF MATERIAL \*\*

Bar	Size	No.	Length	Shape
b(E)	#4	8	13'-3"	—
b1(E)	#4	4	14'-8"	—
b2(E)	#4	4	16'-4"	—
b3(E)	#4	4	18'-0"	—
d(E)	#4	46	5'-4"	└
h(E)	#5	4	16'-3"	└
h1(E)	#5	4	7'-3"	—
h2(E)	#4	20	6'-10"	—
h3(E)	#4	8	24'-3"	—
s(E)	#4	8	11'-9"	└
v(E)	#6	12	11'-5"	└
Item		Unit	Total	
Class SI Concrete		C.Y.	19.2	
Reinforcement Bars, Epoxy Coated		Lbs.	960	

\*\* For two aprons. The quantities shown are for information only.



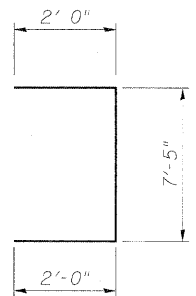
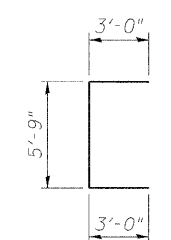
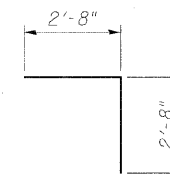
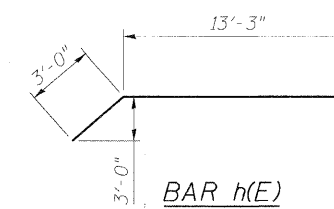
DETAIL "A"



MIN. BAR LAP  
#4 - 1'-8"  
#5 - 2'-2"

NOTES:

1. Bars indicated thus 1x2-#4 etc. indicates 1 line of bars with 2 lengths per line.
2. All construction joints shall be bonded.
3. Cover 3" φ weep holes with geotechnical fabric for box culvert end section and precast box culvert.



DESIGNED	RJT
CHECKED	EFS
DRAWN	MB
CHECKED	EFS

HALF SIDE ELEVATION

benesch

alfred benesch & company  
Engineers • Surveyors • Planners  
205 North Michigan Avenue, Suite 2400  
Chicago, Illinois 60601  
312-565-0450 Job No. 3733

SHEET NO. SB-5 SB-7 SHEETS	F.A.P. RTE. 365	SECTION (57 & 58)WRS-2	COUNTY DUPAGE	TOTAL SHEETS 681	SHEET NO. 397
	CONTRACT NO. 62419				
ILLINOIS FED. AID PROJECT					