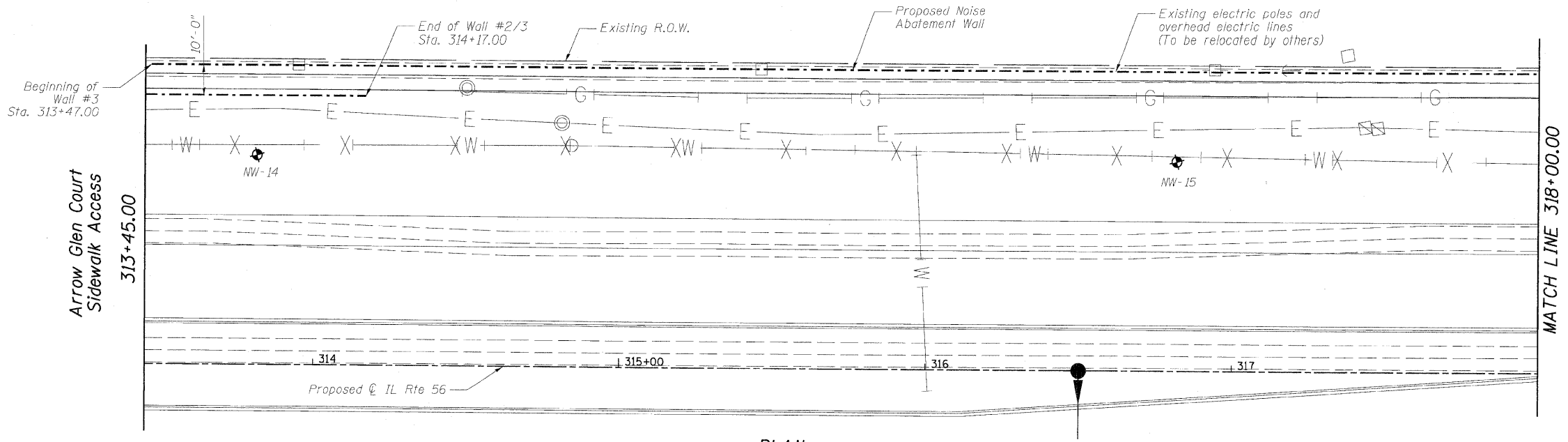
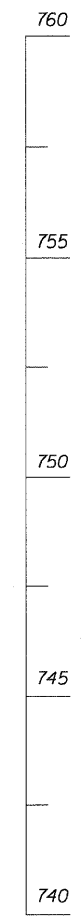
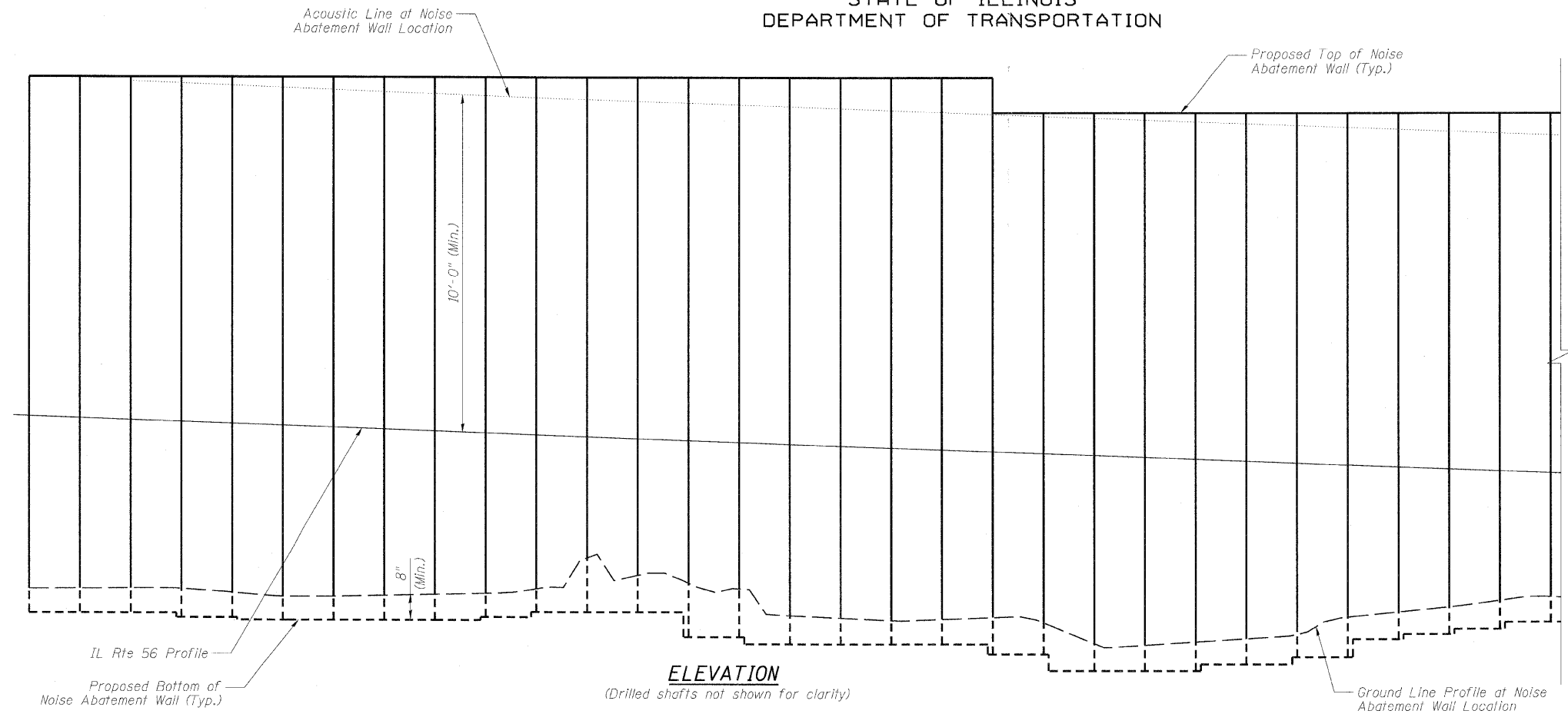
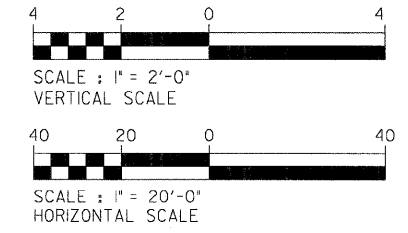


STATE OF ILLINOIS  
DEPARTMENT OF TRANSPORTATION



- NOTES:**
- Elevation for Wall 2/3 not shown for clarity, see sheet N20 for elevation.
  - Beginning of Wall 3 shall not be stepped.
  - Walls 2 and 3 shall be centered around access sidewalk. Adjust wall ends as required.

**GENERAL PLAN AND ELEVATION 5 OF 17  
NOISE ABATEMENT WALL**

DESIGNED -	RJT
CHECKED -	MRB
DRAWN -	MB
CHECKED -	MRB

**benesch**  
alfred benesch & company  
Engineers • Surveyors • Planners  
205 North Michigan Avenue, Suite 2400  
Chicago, Illinois 60601  
312-565-0450 Job No. 3733

SHEET NO. N5 N30 SHEETS	F.A.P. RTE.	SECTION	COUNTY	TOTAL SHEETS	SHEET NO.
	365	(57 & 58)WRS-2	DUPAGE	681	404
			CONTRACT NO. 62419		
ILLINOIS FED. AID PROJECT					

11:57:22 AM x:\3700s\3733\engineering\documents\phase.1\noise-abatement-wall\final\162419-new.gpc05.dgn 12/3/2010