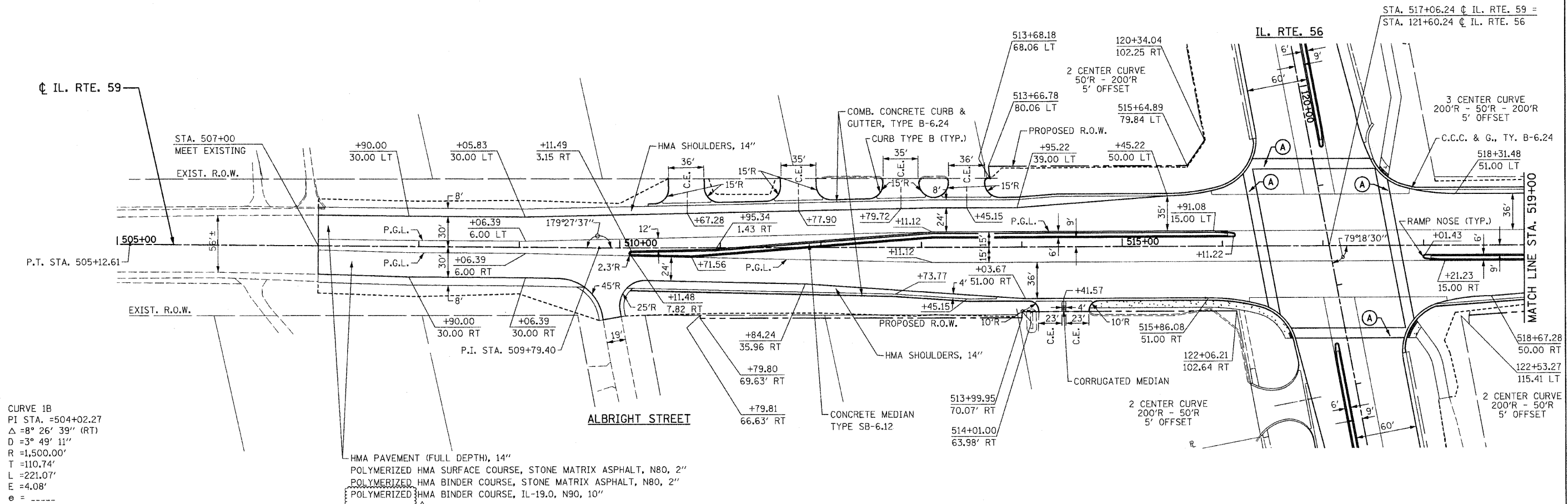


CITY OF WARRENVILLE
SW 1/4 SECTION 34 - 39 - 9

(A) PCC PAVEMENT JT, 10", SPL

NW 1/4 SECTION 34 - 39 - 9

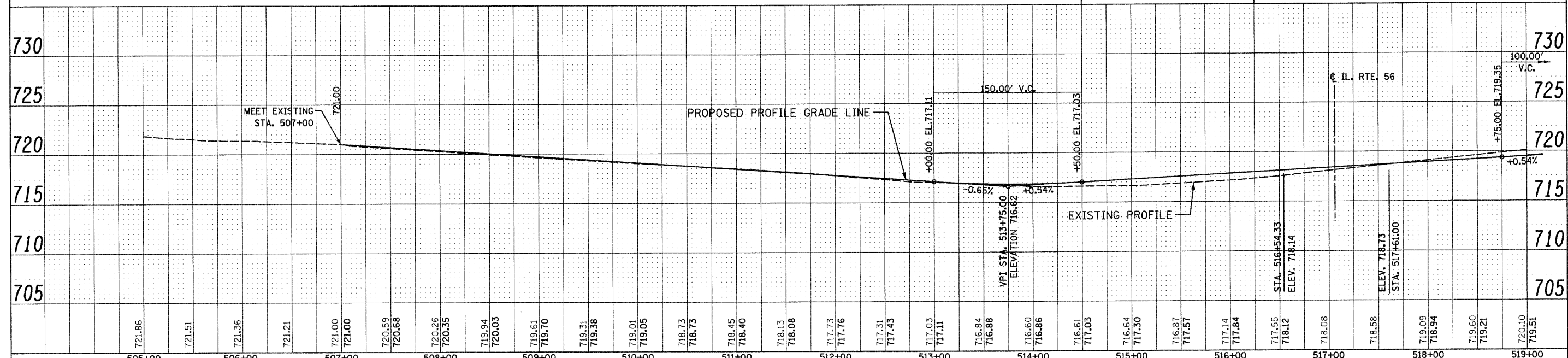


CURVE 1B
 PI STA. =504+02.27
 Δ =8° 26' 39" (RT)
 D =3° 49' 11"
 R =1,500.00'
 T =110.74'
 L =221.07'
 E =4.08'
 e =
 T.R. =
 S.E. RUN =
 P.C. STA. =502+91.54
 P.T. STA. =505+12.61

HMA PAVEMENT (FULL DEPTH), 14"
 POLYMERIZED HMA SURFACE COURSE, STONE MATRIX ASPHALT, N80, 2"
 POLYMERIZED HMA BINDER COURSE, STONE MATRIX ASPHALT, N80, 2"
 POLYMERIZED HMA BINDER COURSE, IL-19.0, N90, 10"

BM 464 ELEV. 716.77
 STA. 124+87.58 54.15' RT.
 "□" ON LIGHT POLE BASE

NOTES:
 1. FOR IL. RTE. 59 INTERSECTION, SEE DETAILS AND ELEVATIONS SHEET.



FILE NAME =D:\62420-shr-plnprf591.dgn	DESIGNED - S.J.P.	REVISED 1/ ADDENDUM 1 12-28-2010	F.A.P. RTE. 365	SECTION (58&59) WRS-3	COUNTY DuPAGE	TOTAL SHEETS 466	SHEET NO. 102
CHRISTIAN-ROGE & ASSOCIATES, INC. ENGINEERS-PLANNERS-SURVEYORS 211 WEST WACKER DRIVE CHICAGO, ILLINOIS 60606 PHONE: (312)372-2023 FAX: (312)372-5274	DRAWN - B.K.	REVISIONS	STATE OF ILLINOIS DEPARTMENT OF TRANSPORTATION		ROADWAY PLAN AND PROFILE IL. RTE. 59		CONTRACT NO. 62420
PLLOT DATE =12/29/2010	CHECKED - M.P.	DATE - DECEMBER 3, 2010	SCALE: 1" = 50'	SHEET NO. 1 OF 2 SHEETS	STA. 507+00 TO STA. 519+00	FED. ROAD DIST. NO. 1 (ILLINOIS) FED. AID PROJECT	