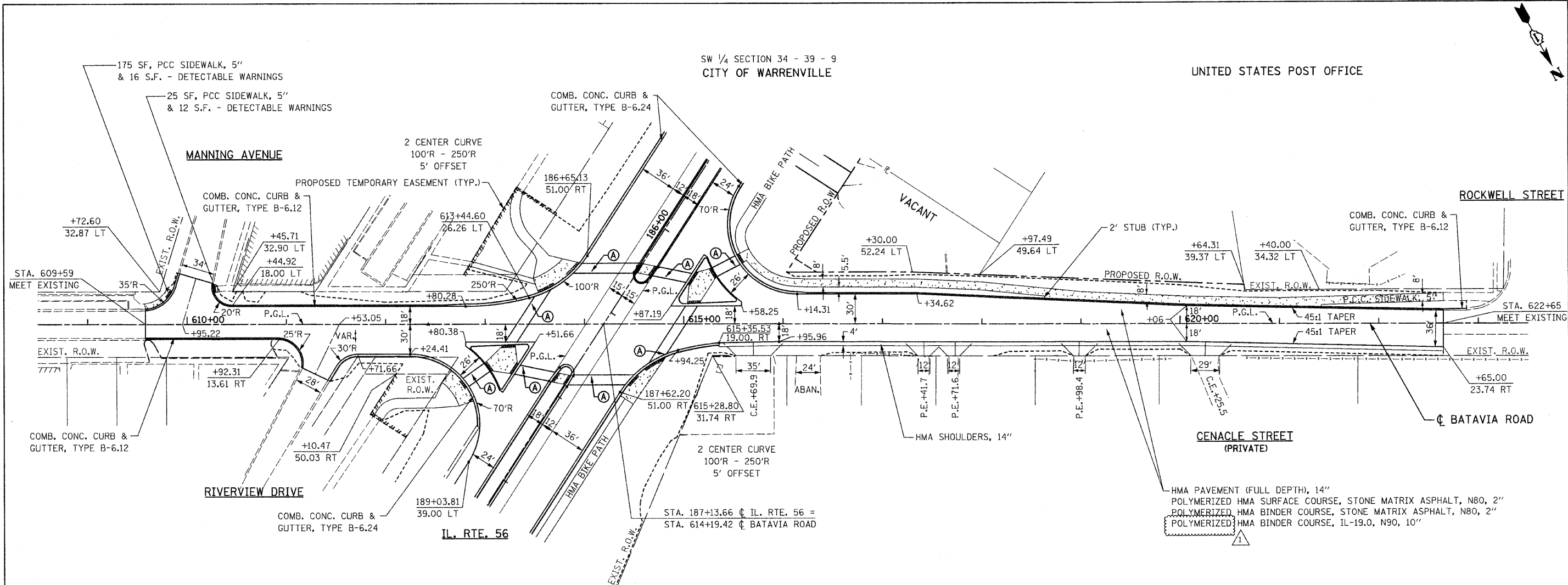


SW ¼ SECTION 34 - 39 - 9
CITY OF WARRENVILLE

UNITED STATES POST OFFICE

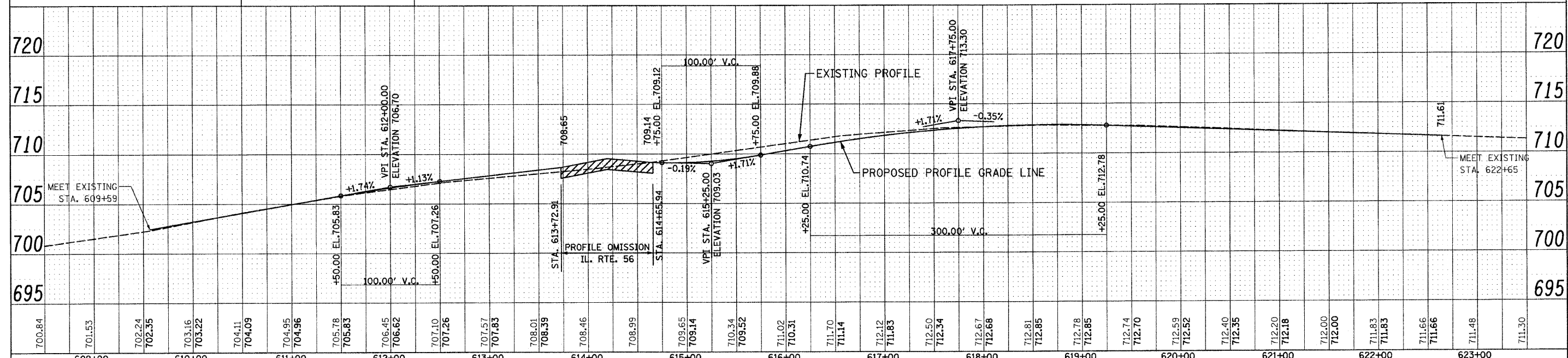


BM 440 ELEV. 708.43
STA. 187+36.27 14.22' LT.
"X" CUT ATOP CURB

A PCC PAVEMENT JT, 10", SPL

HMA PAVEMENT (FULL DEPTH), 14"
POLYMERIZED HMA SURFACE COURSE, STONE MATRIX ASPHALT, N80, 2"
POLYMERIZED HMA BINDER COURSE, STONE MATRIX ASPHALT, N80, 2"
POLYMERIZED HMA BINDER COURSE, IL-19.0, N90, 10"

NOTES:
1. FOR BATAVIA ROAD INTERSECTION,
SEE DETAILS AND ELEVATIONS SHEET.



FILE NAME = D:\62420-drt-plnprfbat.dgn
PLOT DATE = 12/29/2010
PLOT SCALE = 50.000' / 1" IN.

CR CHRISTIAN-ROGE & ASSOCIATES, INC.
ENGINEERS-PLANNERS-SURVEYORS
211 WEST WACKER DRIVE
CHICAGO, ILLINOIS 60606
PHONE: (312)372-2023 FAX: (312)372-5274

DESIGNED - S.J.P.	REVISED 1 - ADDENDUM 1 12-28-2010
DRAWN - B.K.	REVISED -
CHECKED - M.P.	REVISED -
DATE - DECEMBER 3, 2010	REVISED -

STATE OF ILLINOIS
DEPARTMENT OF TRANSPORTATION

ROADWAY PLAN AND PROFILE
BATAVIA ROAD

SCALE: 1" = 50'
SHEET NO. 1 OF 1 SHEETS
STA. 609+16 TO STA. 622+65

F.A.P. RTE. 365	SECTION (58&59) WRS-3	COUNTY DuPAGE	TOTAL SHEETS 466	SHEET NO. 104
CONTRACT NO. 62420				
FED. ROAD DIST. NO. 1 ILLINOIS FED. AID PROJECT				