

**BENCH MARK: CRA 18**

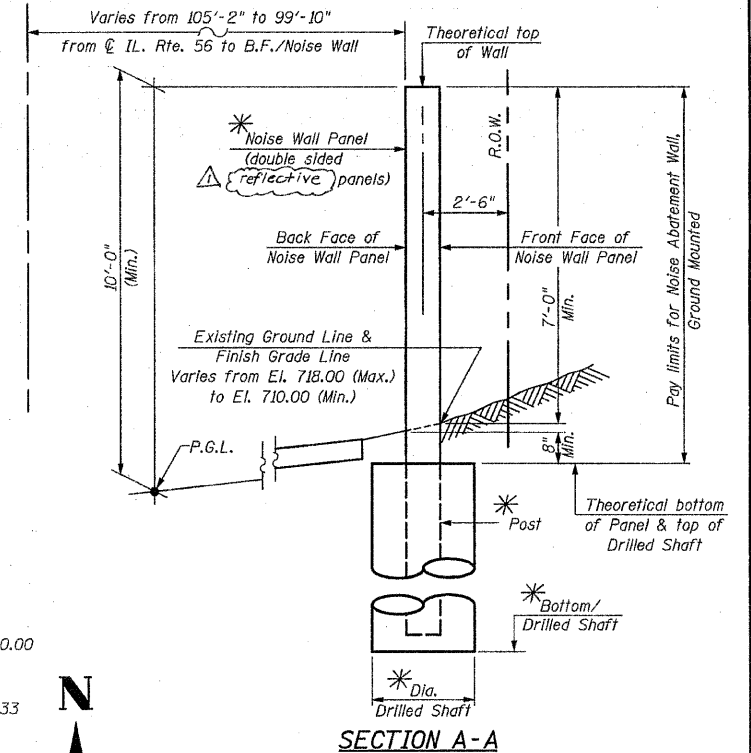
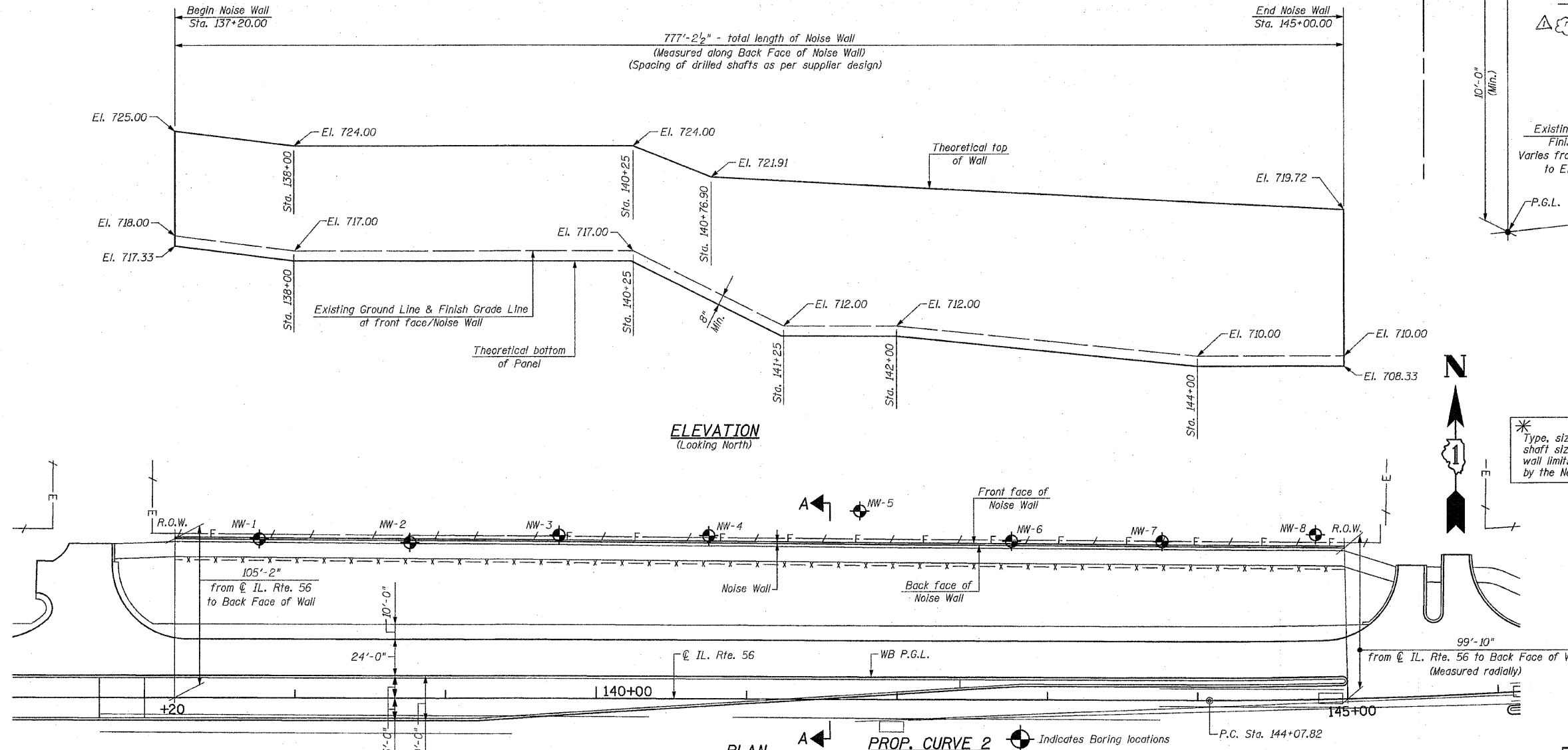
South bolt on fire hydrant at Sta. 173+03.39, 92.89' Lt., Elev. 703.55

The Noise Wall will be installed during Stage II Construction.

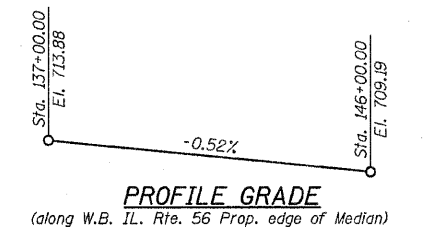
Existing Structure: none

Salvage: none

STATE OF ILLINOIS  
DEPARTMENT OF TRANSPORTATION



\* Type, size & spacing of posts, Noise Wall Panels, drilled shaft size & embedment length, reinforcement details and wall limits including top & bottom of wall to be determined by the Noise Wall supplier during construction



**BILL OF MATERIAL**

Item	Unit	Total
Noise Abatement Wall, Ground Mounted	Sq. Ft.	6,814

**NOTE:**  
The Foundation, Posts & Noise Wall Panels shall be designed to accommodate the ultimate or maximum Noise Wall height and earth retention condition.

**NOTES:**  
The Foundation is to be designed by the Contractor. The Foundation is not to be placed within 1'-0" of any pipes, culverts or utilities. The Contractor shall verify any obstruction to pipes, culverts and utilities prior to construction of foundation.

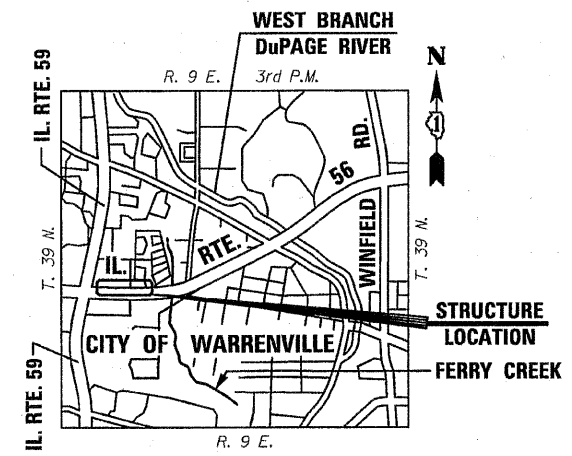
**PROP. CURVE 2 (IL. RTE. 56)**  
 P.I. = Sta. 152+72.86  
 $\Delta = 29^{\circ}-07'-26''$  (Lt.)  
 $D = 1^{\circ}-43'-34''$   
 $R = 3,330.00'$   
 $T = 865.04'$   
 $L = 1,692.66'$   
 $E = 110.52'$   
 $e = 3.14\%$   
 $T.P. = 72.61'$   
 $S.E. RUN = 114'$   
 $P.C. Sta. = 144+07.82$   
 $P.T. Sta. = 161+00.48$

**HIGHWAY CLASSIFICATION**  
 F.A.P. Rte. 365 (IL. Rte. 56)  
 Functional Class: Other Principal Arterial  
 ADT: 14,200 (2005); 25,00 (2030)  
 ADTT: 690 (2005); 1,070 (2030)  
 DHV: 3,060 (2030)  
 Design Speed: 50 m.p.h.  
 Posted Speed: 45 m.p.h.  
 Two-Way Traffic  
 Directional Distribution: 50%/50%

**DESIGN SPECIFICATIONS**  
 AASHTO 2002 Standard Specifications for Highway Bridges.  
 AASHTO 1989 Guide Specifications for Structural Design of Sound Barriers and 1992 & 2002 Interims.

**LOADING**  
 Wind Load on Noise Wall = 25psf

**DESIGN STRESSES**  
**FIELD UNITS**  
 $f'_c = 3,500$  psi  
 $f_y = 60,000$  psi (Reinforcement)



DESIGNED	200
CHECKED	ENGINEER OF BRIDGE DESIGN
DRAWN	PASSED
CHECKED	ENGINEER OF BRIDGES AND STRUCTURES

SHEET NO. RW-1	F.A. RTE. 365	SECTION (58&59) WRS-3	COUNTY DuPAGE	TOTAL SHEETS 466	SHEET NO. 261
CONTRACT NO. 62420					
145+13.00 ILLINOIS FED. AID PROJECT					

**CHRISTIAN-ROGE & ASSOCIATES, INC.**  
 ENGINEERS-PLANNERS-SURVEYORS  
 211 WEST WACKER DRIVE  
 CHICAGO, ILLINOIS 60606  
 PHONE: (312)372-2023 FAX: (312)372-5274

**GENERAL PLAN & ELEVATION**  
**IL. ROUTE 56**  
**CONCRETE NOISE ABATEMENT WALL**  
**F.A.P. RTE. 365**  
**SECTION (58&59) WRS-3**  
**DuPAGE COUNTY**  
**STA. 137+20 TO STA. 145+00**  
**STRUCTURE NO. 022-WQ41**  
 Rev. 1-7-11