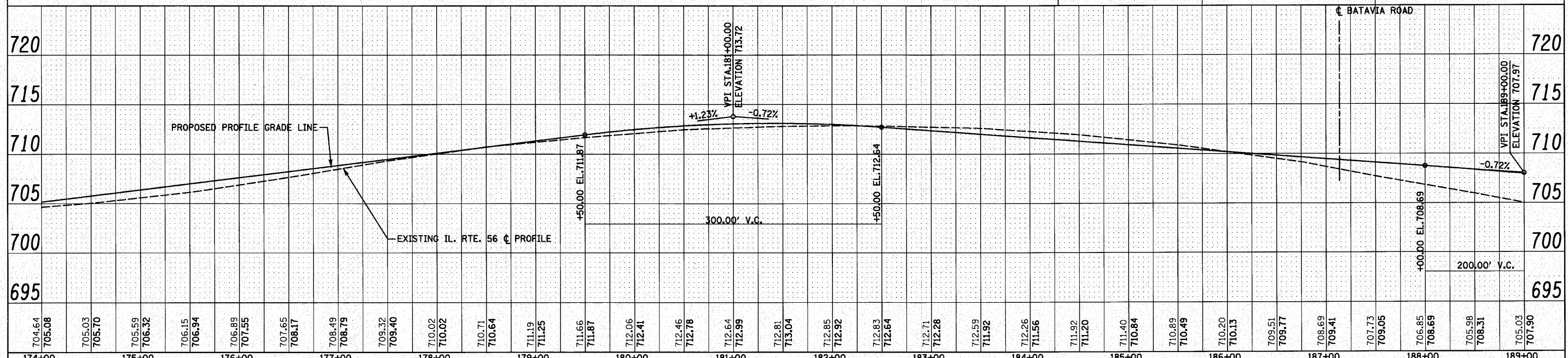


- NOTES:**
- FOR ROCKWELL STREET INTERSECTION, SEE INTERSECTION DETAILS SHEET.
 - FOR BATAVIA ROAD & CALUMET AVENUE INTERSECTIONS, SEE DETAILS AND ELEVATIONS SHEET.
 - EQUESTRIAN NOTE:** CONTRACTOR SHALL ROUGH BROOM FINISH CONCRETE SIDEWALK AND PCC PAVEMENT 10", SPECIAL TO PROVIDE TEXTURED SURFACE FOR EQUESTRIANS.

CURVE 3 (LEFT) SUPERELEVATION TRANSITION

LEFT ELEVATIONS			X-SLOPE (%)			RIGHT ELEVATIONS		
E/P - 39'	CL PAVT. - 27'	PGL - 15'	X-SLOPE (%)	STATION	X-SLOPE (%)	PGL - 15'	CL PAVT. - 27'	E/P - 39'
707.64	707.88	708.12	-2.00	188+74.31	-2.00	708.12	707.88	707.64
707.63	707.87	708.11	-2.00	188+75.00	-1.98	708.11	707.87	707.63
707.42	707.66	707.90	-2.00	189+00.00	-1.30	707.90	707.74	707.59
707.20	707.44	707.68	-2.00	189+25.00	-0.62	707.68	707.61	707.53
706.99	707.23	707.47	-2.00	189+47.95	0.00	707.47	707.47	707.47
706.97	707.21	707.45	-2.00	189+50.00	0.06	707.45	707.46	707.46
706.74	706.98	707.22	-2.00	189+75.00	0.73	707.22	707.31	707.40
706.49	706.73	706.97	-2.00	190+00.00	1.41	706.97	707.14	707.31
706.47	706.71	706.95	-2.00	190+01.95	1.47	706.95	707.13	707.30
706.28	706.52	706.76	-2.00	190+21.59	2.00	706.76	707.00	707.24
706.22	706.47	706.72	-2.09	190+25.00	2.09	706.72	706.97	707.22
706.15	706.42	706.68	-2.20	190+28.95	2.20	706.68	706.94	707.21



FILE NAME = 0162420-sh1-plnprf07.dgn	DESIGNED - S.J.P.	REVISED -	STATE OF ILLINOIS DEPARTMENT OF TRANSPORTATION	F.A.P. R.T.E. 365	SECTION (58&59) WRS-3	COUNTY DuPAGE	TOTAL SHEETS 466	SHEET NO. 96
PLOT DATE = 12/2/2010	DRAWN - B.K.	REVISED -		SCALE: 1" = 50'	SHEET NO. 7 OF 12 SHEETS	STA. 174+00 TO STA. 189+00	CONTRACT NO. 62420	
PLOT SCALE = 50.000" / IN.	CHECKED - M.P.	REVISED -		FED. ROAD DIST. NO. 1 ILLINOIS FED. AID PROJECT				
PHONE: (312)372-2023 FAX: (312)372-5274	DATE - DECEMBER 3, 2010	REVISED -						