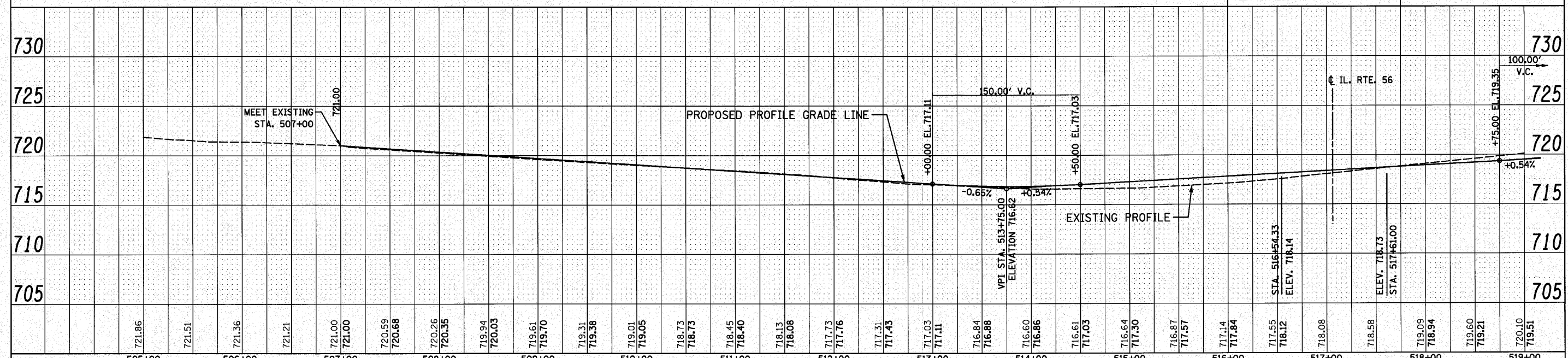
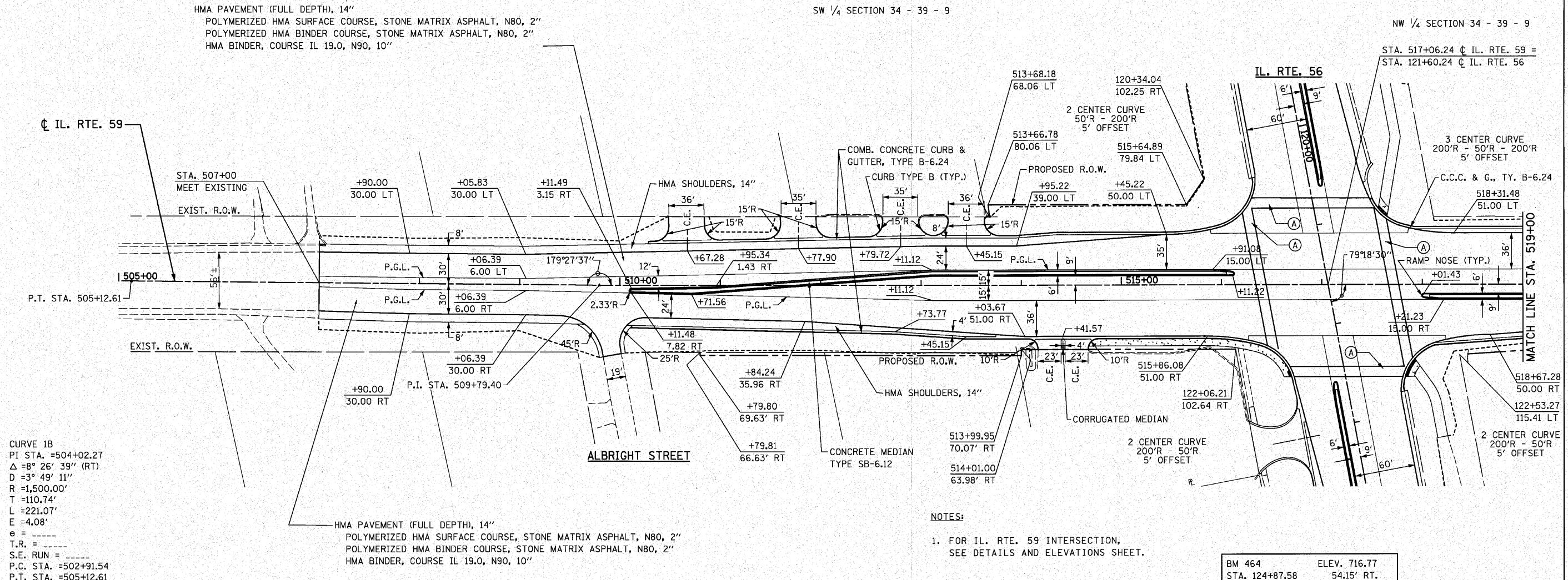


CITY OF WARRENVILLE
SW 1/4 SECTION 34 - 39 - 9

(A) PCC PAVEMENT JT, 10", SPL

NW 1/4 SECTION 34 - 39 - 9



721.86	721.51	721.36	721.21	721.00	721.00	720.59	720.68	720.26	720.35	719.94	720.03	719.61	719.70	719.31	719.38	719.01	719.05	718.73	718.73	718.45	718.40	718.13	718.08	717.73	717.76	717.31	717.45	717.03	717.11	716.84	716.88	716.60	716.86	716.61	717.03	716.64	717.30	716.87	717.57	717.14	717.84	717.55	718.12	718.08	718.58	719.09	718.94	719.60	719.21	720.10	719.51
505+00	506+00	507+00	508+00	509+00	510+00	511+00	512+00	513+00	514+00	515+00	516+00	517+00	518+00	519+00																																					

FILE NAME = D162420-sh1-plnprf591.dgn
 PLOT DATE = 12/2/2010
 PLOT SCALE = 50.000' / IN.

CHRISTIAN-ROGE & ASSOCIATES, INC.
 ENGINEERS-PLANNERS-SURVEYORS
 211 WEST WACKER DRIVE
 CHICAGO, ILLINOIS 60606
 PHONE: (312)372-2023 FAX: (312)372-5274

DESIGNED - S.J.P.	REVISED -
DRAWN - B.K.	REVISED -
CHECKED - M.P.	REVISED -
DATE - DECEMBER 3, 2010	REVISED -

STATE OF ILLINOIS
 DEPARTMENT OF TRANSPORTATION

ROADWAY PLAN AND PROFILE
 IL. RTE. 59
 SCALE: 1" = 50'
 SHEET NO. 1 OF 2 SHEETS
 STA. 507+00 TO STA. 519+00

F.A.P. RTE. 365	SECTION (58&59) WRS-3	COUNTY DuPAGE	TOTAL SHEETS 466	SHEET NO. 102
CONTRACT NO. 62420			ILLINOIS FED. AID PROJECT	