

43
 STA 130+00, 0'RT
 CB TA 4'Ø T8G
 RIM EL 717.56
 INV 712.56

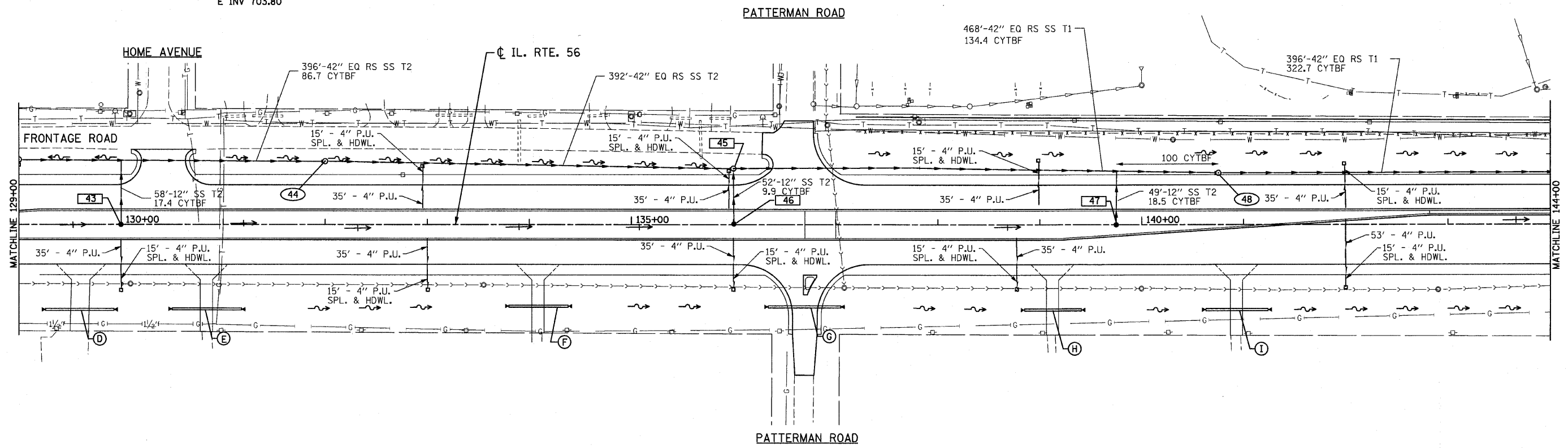
44
 STA 132+00, 63'LT
 MH TA 8'Ø T1F CL
 W/RESTRICTOR PLATE
 RIM EL 712.70
 W INV 706.00
 E INV 703.80

45
 STA 136+00, 62'LT
 MH TA 8'Ø W/T8G & 2' SUMP
 RIM EL 711.50
 E&W INV 703.40
 S INV 708.91

46
 STA 136+00, 0'RT
 CB TA 4'Ø T8G
 RIM EL 714.43
 INV 709.43

47
 STA 139+75, 0'RT
 CB TA 4'Ø T8G
 RIM EL 712.47
 INV 707.47

48
 STA 140+75, 51'LT
 MH TA 8'Ø T1F CL
 RIM EL 711.04
 W&E INV 702.92



D
 STA 129+59, 83'RT
 37'-54" PC T1
 54" PRC FES, 2 EA W/GRATE
 +32 USFL 708.52
 +85 DSFL 708.32

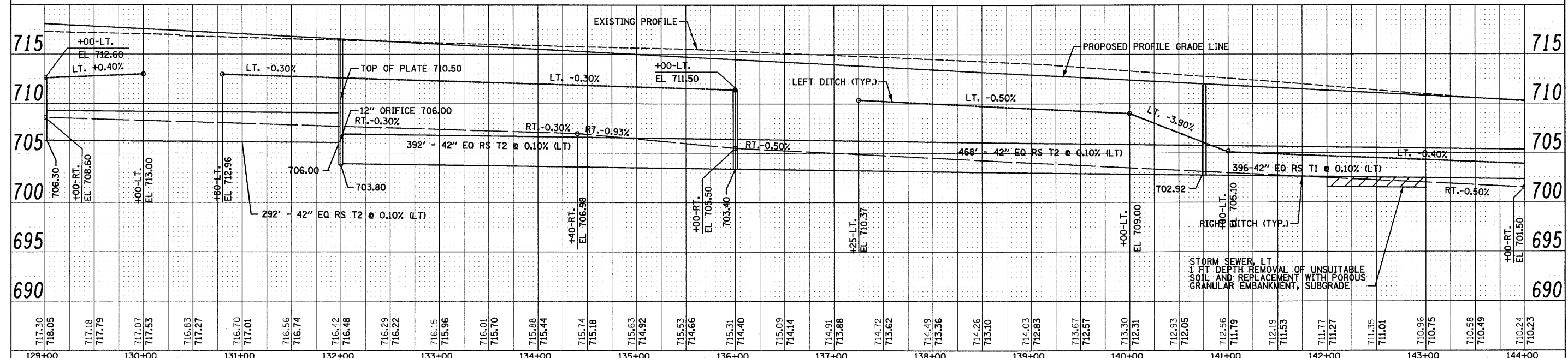
E
 STA 130+84, 83'RT
 46'-54" PC T1
 54" PRC FES, 2 EA W/GRATE
 +52 USFL 708.15
 +14 DSFL 707.95

F
 STA 134+09, 82'RT
 40'-PCBC 6'X3' (M273)
 54" PRC FES, 2 EA W/GRATE
 +79 USFL 707.16
 +35 DSFL 706.98

G
 STA 136+69, 83'RT
 60'-PCBC 6'X3' (M273)
 BOX CUL END SEC, 2 EA.
 +33 USFL 705.33
 +79 USFL 707.16
 +05 DSFL 704.99

H
 STA 139+13, 83'RT
 44'-PCBC 6'X3' (M273)
 BOX CUL END SEC, 2 EA
 +85 USFL 704.08
 +41 DSFL 703.80

I
 STA 140+93, 83'RT
 49'-PCBC 6'X3' (M273)
 BOX CUL END SEC, 2 EA
 +62 USFL 703.19
 +23 DSFL 702.89



FILE NAME = 0162420-shrt-drain04.dgn	DESIGNED - S.J.P.	REVISED -	STATE OF ILLINOIS DEPARTMENT OF TRANSPORTATION	DRAINAGE PLAN AND PROFILE IL. RTE. 56		F.A.P. SECTION COUNTY TOTAL SHEET NO.
PLOT DATE = 12/2/2010	DRAWN - A.C.S.	REVISED -		365 (58859) WRS-3 DuPAGE 466 138		
PLOT SCALE = 50.000' / 1"	CHECKED - M.P.	REVISED -		CONTRACT NO. 62420		
PHONE: (312)372-2023 FAX: (312)372-5274	DATE - DECEMBER 3, 2010	REVISED -		FED. ROAD DIST. NO. 1 ILLINOIS FED. AID PROJECT		