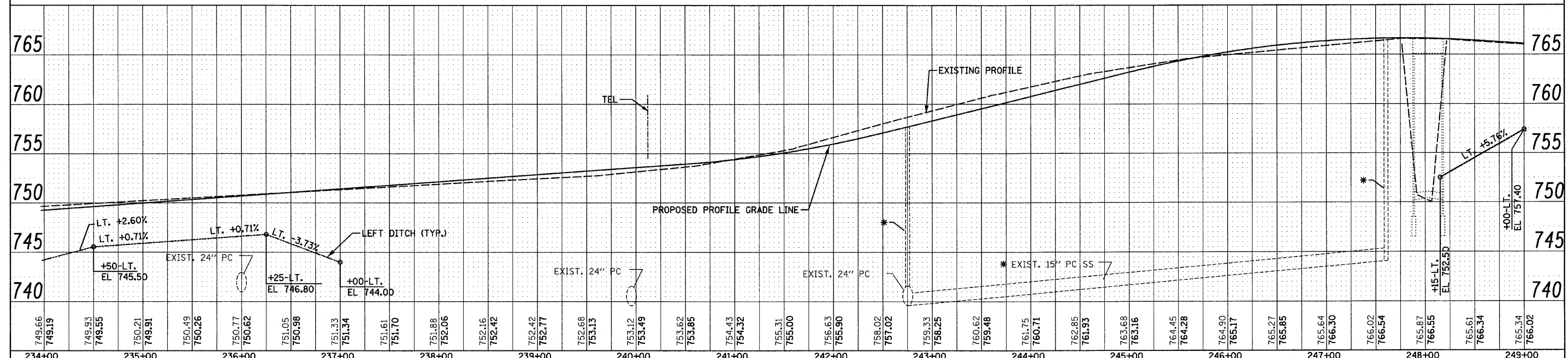


**155**  
 STA 235+98, O'RT  
 MH TA 4" T8G  
 RIM EL 750.80  
 N&S INV (741.00)

**156**  
 STA 237+08, 67'LT  
 MH TA 4" T1F CL  
 RIM EL 746.50  
 N&S INV (741.74)

\* EXISTING STRUCTURE LOCATED FROM EXISTING PLANS.



749.66 749.19	749.93 749.55	750.21 749.91	750.49 750.26	750.77 750.62	751.05 750.98	751.33 751.34	751.61 751.70	751.88 752.06	752.16 752.42	752.42 752.77	752.68 753.13	753.12 753.49	753.62 753.85	754.43 754.32	755.31 755.00	756.63 755.90	758.02 757.02	759.33 758.25	760.62 759.48	761.75 760.71	762.85 761.93	763.68 763.16	764.45 764.28	764.90 765.17	765.27 765.85	765.64 766.30	766.02 766.54	765.87 766.55	765.61 766.34	765.34 766.02
234+00	235+00	236+00	237+00	238+00	239+00	240+00	241+00	242+00	243+00	244+00	245+00	246+00	247+00	248+00	249+00															

FILE NAME = D162428-shd-drain11.dgn  
 PLOT DATE = 12/2/2010  
 PLOT SCALE = 50.000' / IN.



DESIGNED - S.J.P.	REVISED -
DRAWN - A.C.S.	REVISED -
CHECKED - M.P.	REVISED -
DATE - DECEMBER 3, 2010	REVISED -

**STATE OF ILLINOIS**  
**DEPARTMENT OF TRANSPORTATION**

**DRAINAGE PLAN AND PROFILE**  
**IL. RTE. 56**  
 SCALE: 1" = 50'  
 SHEET NO. 11 OF 12 SHEETS  
 STA. 234+00 TO STA. 249+00

F.A.P. RTE. 365	SECTION (58&59) WRS-3	COUNTY DUPAGE	TOTAL SHEETS 466	SHEET NO. 145
CONTRACT NO. 62420			ILLINOIS FED. AID PROJECT	