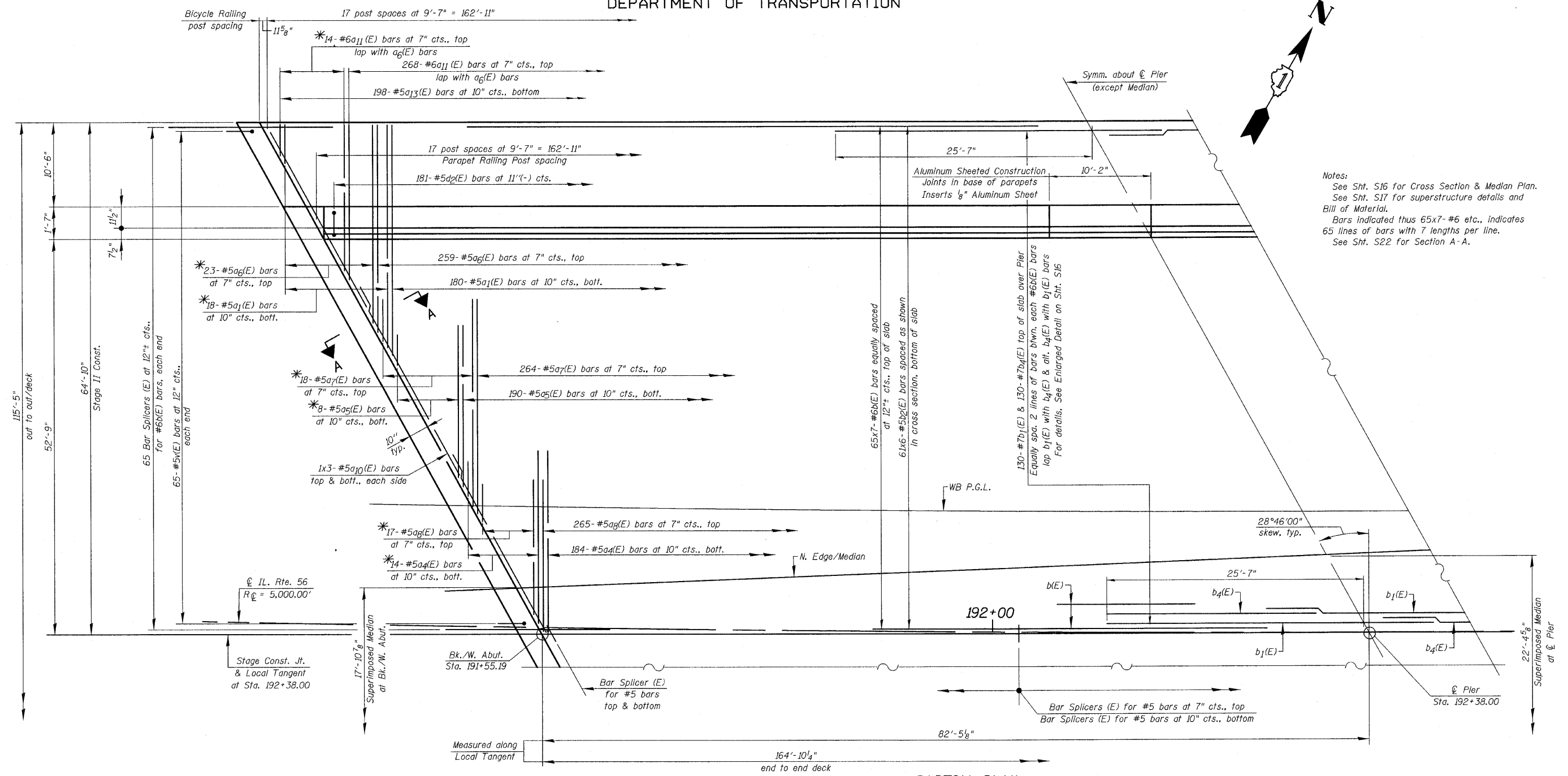


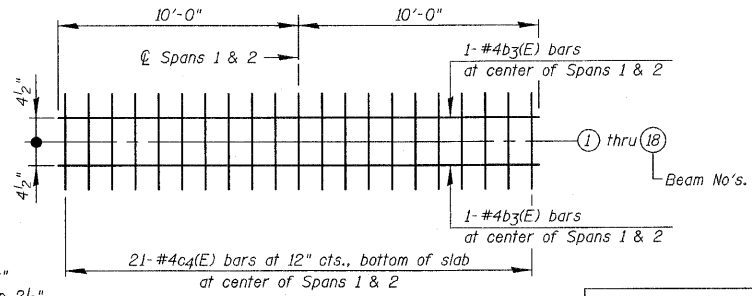
STATE OF ILLINOIS  
DEPARTMENT OF TRANSPORTATION

\* Order  $a_1(E)$ ,  $a_3(E)$ ,  $a_4(E)$ ,  $a_5(E)$ ,  $a_6(E)$ ,  $a_7(E)$  and  $a_8(E)$  &  $a_{11}(E)$  bars full length. Cut to fit skew and use remainder of bars in opposite end.

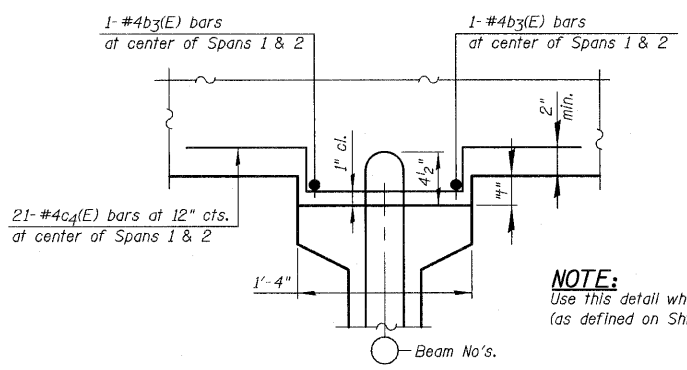


Notes:  
See Sht. S16 for Cross Section & Median Plan.  
See Sht. S17 for superstructure details and Bill of Material.  
Bars indicated thus 65x7-#6 etc., indicates 65 lines of bars with 7 lengths per line.  
See Sht. S22 for Section A-A.

PARTIAL PLAN



DETAIL "A"



FILLET REINFORCEMENT DETAIL  
(Typical for all beams-18 thus)  
SEE DETAIL "A"

NOTE:  
Use this detail when the fillet height "h" (as defined on Sht. S4) is greater than  $2\frac{1}{2}$ "

MIN. BAR LAP:  
#5 bars = 2'-6"  
#6 bars = 3'-0"  
#7 bars = 3'-11"

DECK PLAN-I  
IL. ROUTE 56 OVER  
WEST BRANCH DuPAGE RIVER  
F.A.P. RTE. 365  
SECTION (58&59) WRS-3  
DuPAGE COUNTY  
STA. 192+38.00  
STRUCTURE NO. 022-2027

DESIGNED -
CHECKED -
DRAWN -
CHECKED -

SHEET NO. S14	F.A. RTE.	SECTION	COUNTY	TOTAL SHEETS	SHEET NO.
S43 SHEETS	365	(58&59) WRS-3	DuPAGE	466	220
			CONTRACT NO. 62420		
ILLINOIS FED. AID PROJECT					

CHRISTIAN-ROGE & ASSOCIATES, INC.  
ENGINEERS-PLANNERS-SURVEYORS  
211 WEST WACKER DRIVE  
CHICAGO, ILLINOIS 60606  
PHONE: (312)372-2023 FAX: (312)372-5274