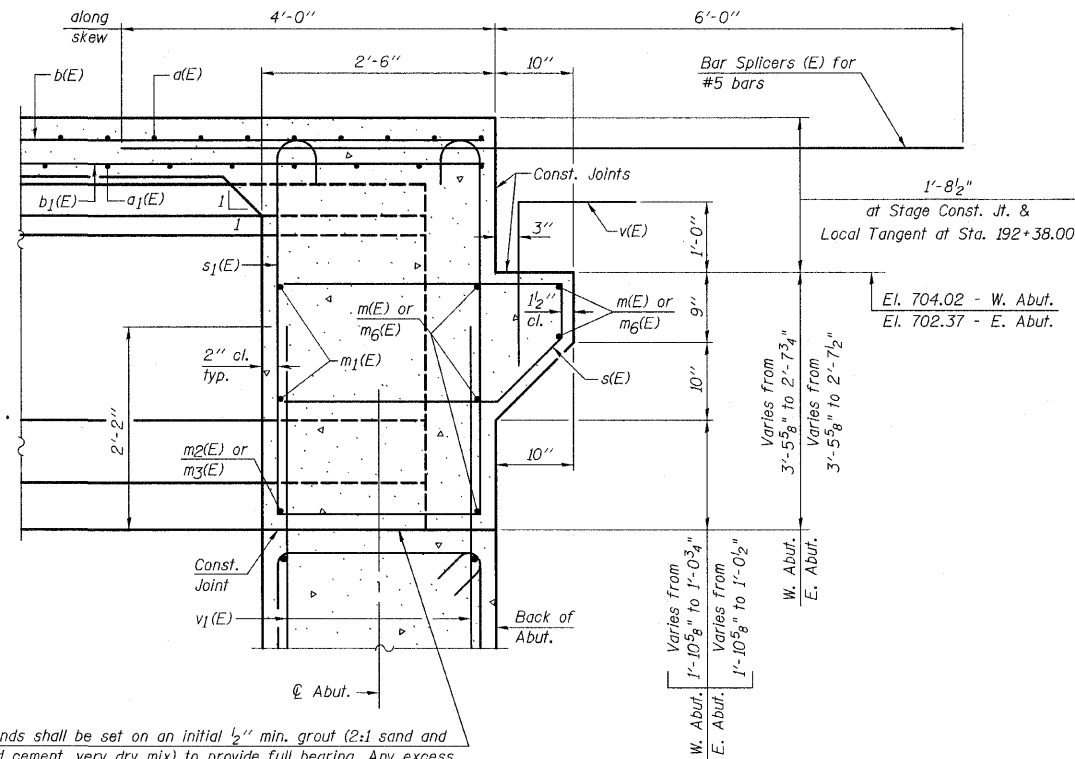


STATE OF ILLINOIS
DEPARTMENT OF TRANSPORTATION



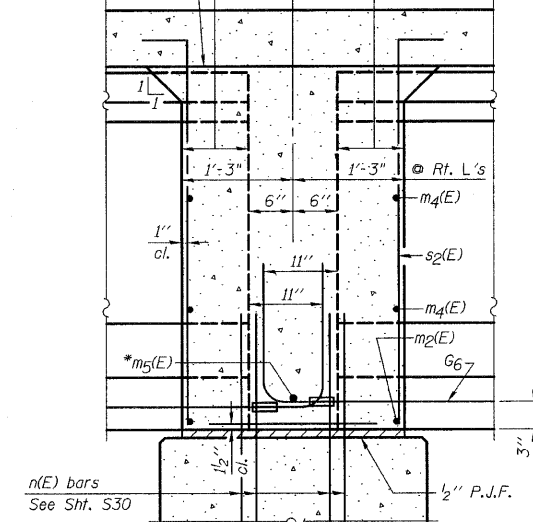
Beam ends shall be set on an initial 1/2" min. grout (2:1 sand and portland cement, very dry mix) to provide full bearing. Any excess grout squeezed out from under the beam shall be removed. Cost included with Concrete Structures.

SECTION A-A

Dimensions at right angles to abutment, except as shown.

Pour diaphragm flush with bott. of slab. Concrete in slab above this line shall be placed not less than 45 min. nor more than 90 min. after diaphragm has been poured.

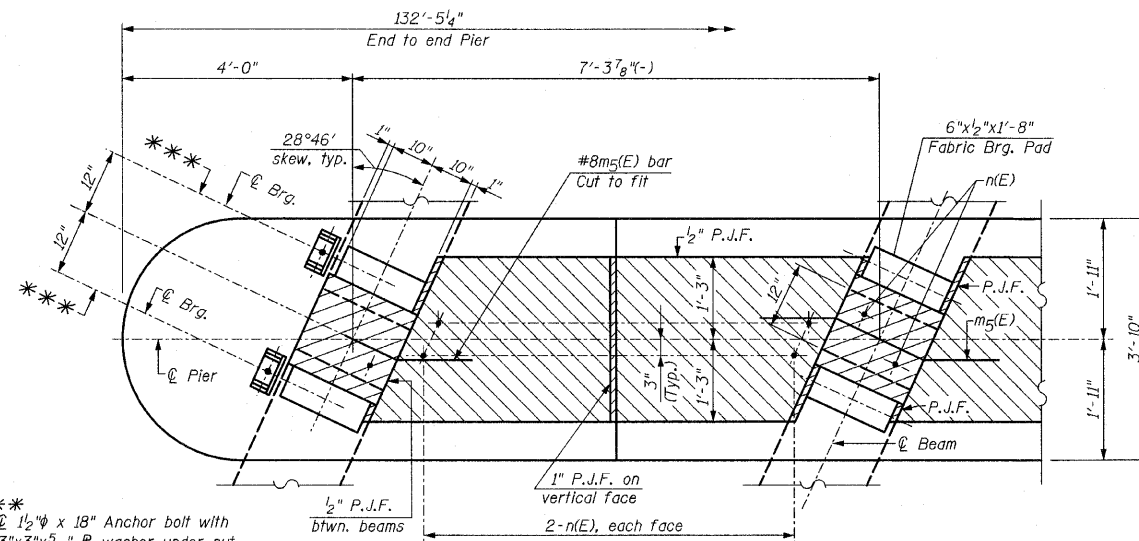
Roofing felt (30 Lbs.) shall be bonded to side of beam embedded into diaphragm.



SECTION B-B

Dimensions along ϕ of beam, except as shown.

* Tightly fasten the #8 bars together with No. 9 wire ties.



PLAN AT PIER

(Showing bearing pad and P.J.F. details)

Note:
See Sht. S21 for location of Sections A-A and B-B.

**DIAPHRAGM ELEVATIONS AT
ABUTMENTS & PIER-II
IL. ROUTE 56 OVER
WEST BRANCH DuPAGE RIVER
F.A.P. RTE. 365
SECTION (58&59) WRS-3
DuPAGE COUNTY
STA. 192+38.00
STRUCTURE NO. 022-2027**

DESIGNED -
CHECKED -
DRAWN -
CHECKED -

CR
CHRISTIAN-ROGE & ASSOCIATES, INC.
ENGINEERS-PLANNERS-SURVEYORS
211 WEST WACKER DRIVE
CHICAGO, ILLINOIS 60606
PHONE: (312)372-2023 FAX: (312)372-5274

SHEET NO. S22	F.A. RTE.	SECTION	COUNTY	TOTAL SHEETS	SHEET NO.
	365	(58&59) WRS-3	DUPAGE	466	228
S43 SHEETS	CONTRACT NO. 62420				
ILLINOIS FED. AID PROJECT					