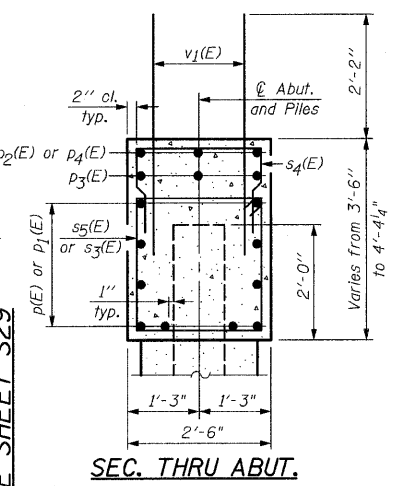
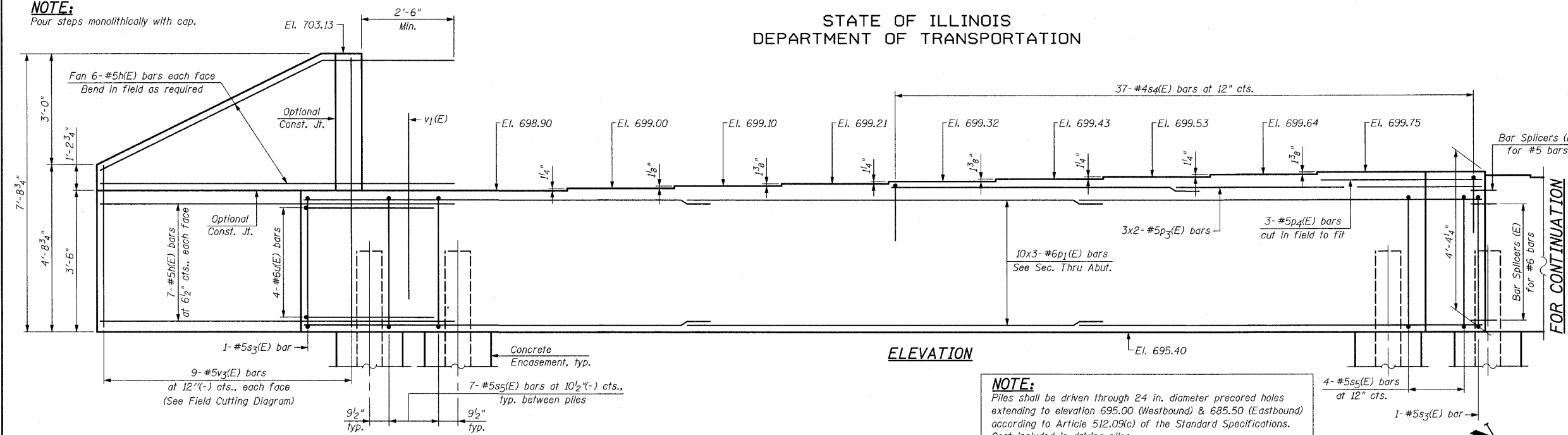


STATE OF ILLINOIS
DEPARTMENT OF TRANSPORTATION

NOTE:
Pour steps monolithically with cap.



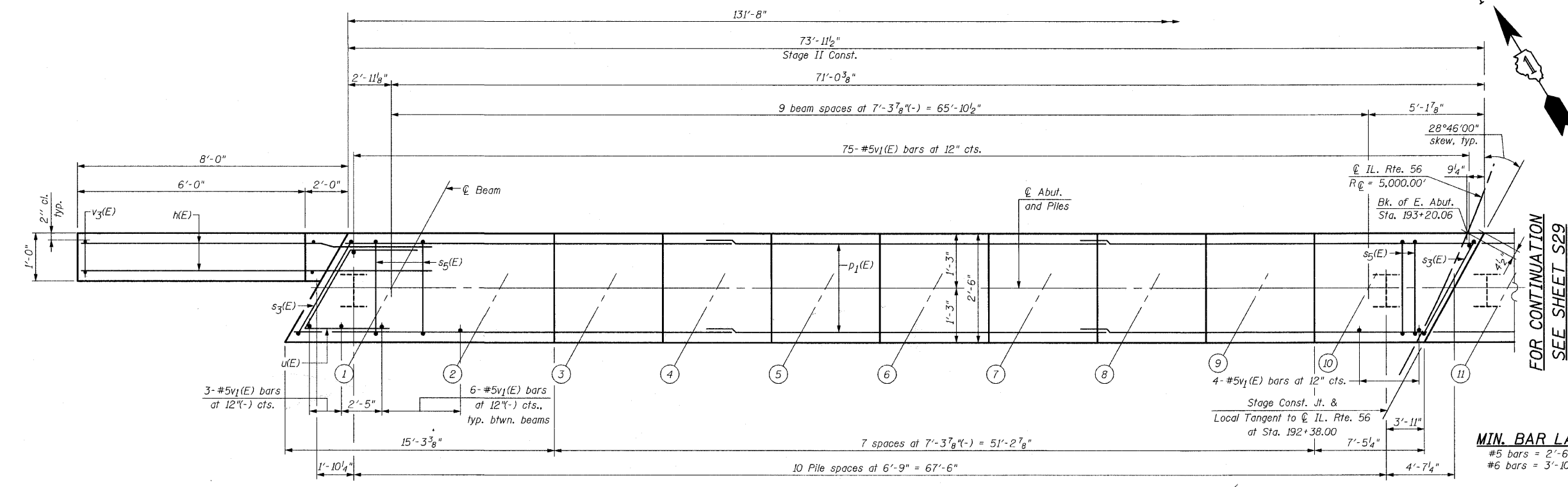
BILL OF MATERIAL

Bar	No.	Size	Length	Shape
h(E)	54	#5	10'-6"	—
p(E)	20	#6	31'-8"	—
p1(E)	30	#6	26'-7"	—
p2(E)	6	#5	29'-11"	—
p3(E)	6	#5	20'-2"	—
p4(E)	3	#5	8'-6"	—
s3(E)	4	#5	12'-3"	□
s4(E)	94	#4	6'-8"	□
s5(E)	130	#5	11'-7"	□
u(E)	9	#6	10'-2"	┘
v1(E)	241	#5	5'-2"	—
v2(E)	9	#5	13'-4"	—
v3(E)	9	#5	11'-8"	—
Structure Excavation		Cu. Yd.	438	
Concrete Structures		Cu. Yd.	52.9	
Concrete Encasement		Cu. Yd.	10.9	
Reinforcement Bars, Epoxy Coated		Pound	6,870	
Bar Splicers		Each	13	
Furnishing Steel Piles HP 14x73		Foot	874	
Driving Piles		Foot	874	
Test Pile Steel HP 14x73		Each	1	
Pile Shoes		Each	20	

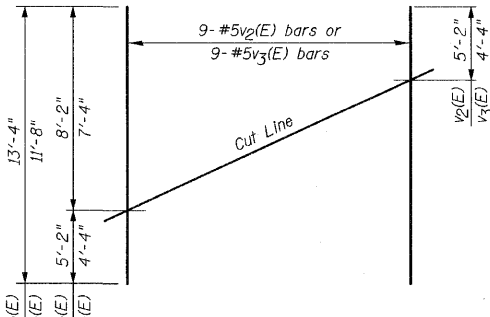
For details of Bar Splicers, see Sheet S34.
For details of piles and Concrete Encasement, see Sheet S35.
Bars indicated thus 10x3-#6 etc., indicates 10 lines of bars with 3 lengths per line.

NOTE:
Piles shall be driven through 24 in. diameter precored holes extending to elevation 695.00 (Westbound) & 685.50 (Eastbound) according to Article 512.09(c) of the Standard Specifications. Cost included in driving piles.

ELEVATION

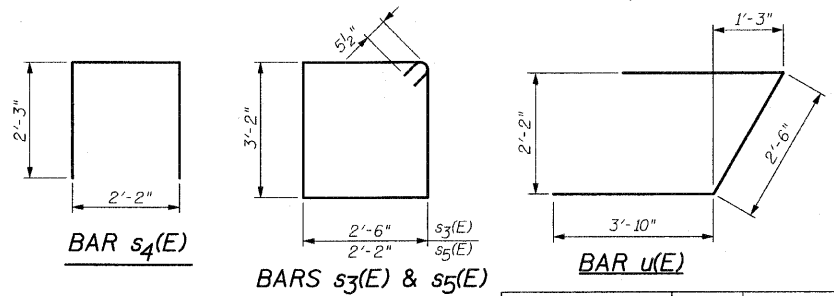


PLAN - EAST ABUTMENT



PILE DATA
Type: Steel HP 14x73 with Pile Shoes
Nominal Required Bearing: 578 kips
Factored Resistance Available: 289 kips
Est. Length: 46 Feet
No. Production Piles: 19
No. Test Piles: 1

FIELD CUTTING DIAGRAM
Order v2(E) & v3(E) full length. Cut as shown and use remainder of bars in opposite face



MIN. BAR LAP:
#5 bars = 2'-6"
#6 bars = 3'-10"

NOTE:
Work this Sheet with Sheet S29

**EAST ABUTMENT-1
IL. ROUTE 56 OVER
WEST BRANCH DuPAGE RIVER
F.A.P. RTE. 365
SECTION (58&59) WRS-3
DuPAGE COUNTY
STA. 192+38.00
STRUCTURE NO. 022-2027**

DESIGNED -
CHECKED -
DRAWN -
CHECKED -

CHRISTIAN-ROGE & ASSOCIATES, INC.
ENGINEERS-PLANNERS-SURVEYORS
211 WEST WACKER DRIVE
CHICAGO, ILLINOIS 60606
PHONE: (312)372-2023 FAX: (312)372-5274

SHEET NO. S28	F.A. RTE. 365	SECTION (58&59) WRS-3	COUNTY DuPAGE	TOTAL SHEETS 466	SHEET NO. 234
S43 SHEETS	CONTRACT NO. 62420			ILLINOIS FED. AID PROJECT	