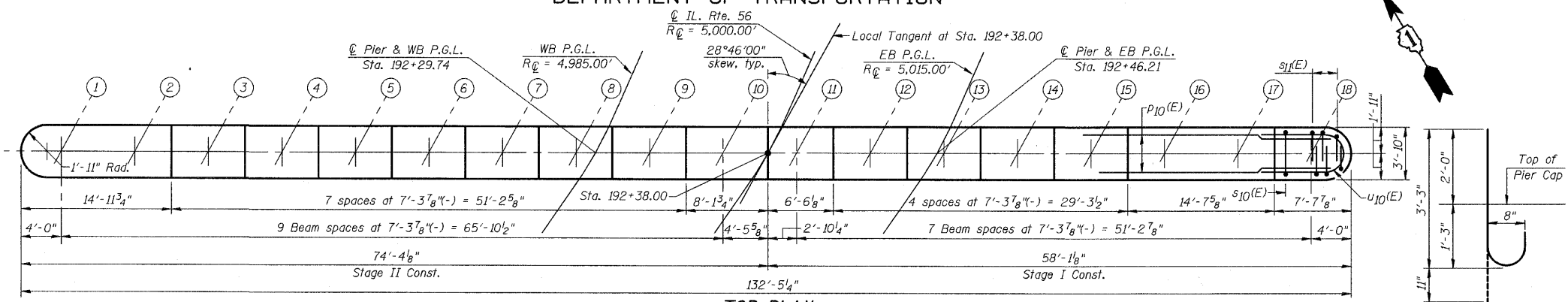


Notes:
 Space reinforcement in cap to miss anchor bolts.
 Pour steps monolithically with cap.
 For details of piles, see Sheet S35

NOTE:
 If a portion of the Pier Wall or Concrete Encasement is under water, Reinforcement may be placed under water into forms. Concrete shall be tremied according to Article 503.08 of the Standard Specifications to an Elevation of 1'-0" above the water line at the time of Construction.

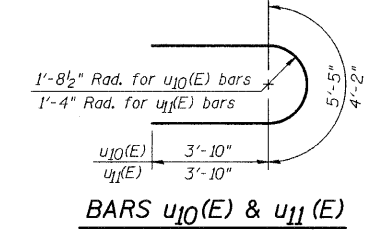
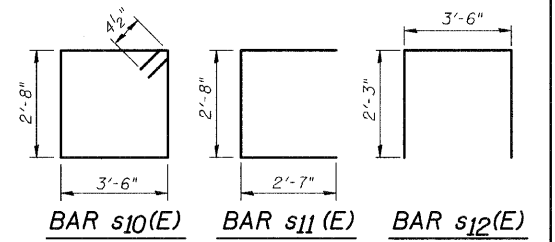
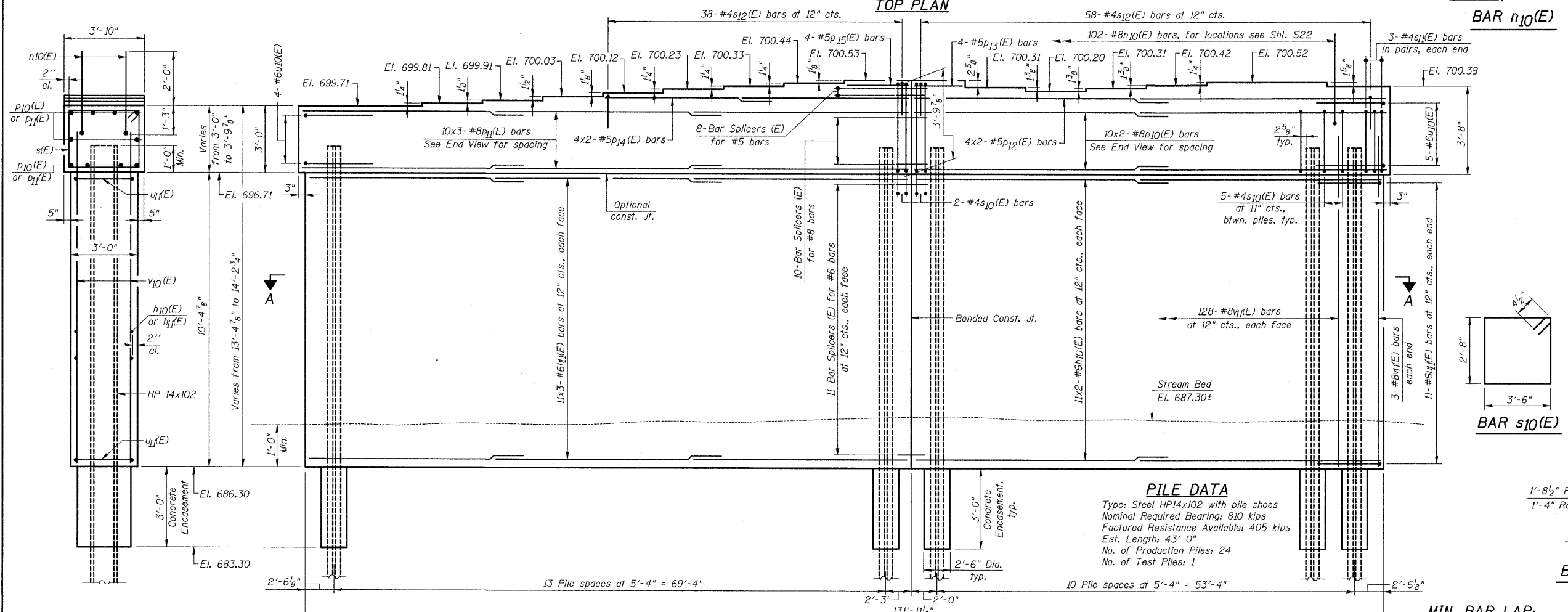
STATE OF ILLINOIS
 DEPARTMENT OF TRANSPORTATION



BILL OF MATERIAL

Bar	No.	Size	Length	Shape
h10(E)	44	#6	30'-0"	—
h11(E)	66	#6	26'-9"	—
n10(E)	102	#8	4'-2"	⌋
p10(E)	20	#8	31'-5"	—
p11(E)	30	#8	28'-7"	—
p12(E)	8	#5	29'-4"	—
p13(E)	4	#5	6'-2"	—
p14(E)	8	#5	19'-10"	—
p15(E)	4	#5	7'-9"	—
s10(E)	119	#4	13'-1"	□
s11(E)	12	#4	7'-10"	□
s12(E)	96	#4	8'-0"	□
u10(E)	9	#6	13'-1"	U
u11(E)	22	#6	11'-10"	U
v11(E)	134	#8	12'-7"	—
Structure Excavation			Cu. Yd.	66
Concrete Structures			Cu. Yd.	217.6
Reinforcement Bars, Epoxy Coated			Pound	16,890
Furnishing Steel Piles HP 14x102			Foot	1,032
Test Pile Steel HP 14x102			Each	1
Driving Piles			Foot	1,032
Underwater Structure Excavation Protection-Location 1			Each	1
Concrete Encasement			Cu. Yd.	13.7
Bar Splicers			Each	40
Pile Shoes			Each	25

Bars indicated thus 11x2-#6 etc., indicates 11 lines of bars with 2 lengths per line



PILE DATA
 Type: Steel HP14x102 with pile shoes
 Nominal Required Bearing: 810 kips
 Factored Resistance Available: 405 kips
 Est. Length: 43'-0"
 No. of Production Piles: 24
 No. of Test Piles: 1

MIN. BAR LAP:
 #5 bars = 2'-6"
 #6 bars = 3'-10"
 #8 bars = 6'-9"

PIER DETAILS
 IL. ROUTE 56 OVER
 WEST BRANCH DuPAGE RIVER
 F.A.P. RTE. 365
 SECTION (58859) WRS-3
 DuPAGE COUNTY
 STA. 192+38.00
 STRUCTURE NO. 022-2027

DESIGNED	-
CHECKED	-
DRAWN	-
CHECKED	-

CHRISTIAN-ROGE & ASSOCIATES, INC.
 ENGINEERS-PLANNERS-SURVEYORS
 211 WEST WACKER DRIVE
 CHICAGO, ILLINOIS 60606
 PHONE: (312)372-2023 FAX: (312)372-5274

SHEET NO. S30	F.A. RTE. 365	SECTION (58859) WRS-3	COUNTY DuPAGE	TOTAL SHEETS 466	SHEET NO. 236
S43 SHEETS	CONTRACT NO. 62420			ILLINOIS FED. AID PROJECT	