

STATE OF ILLINOIS
DEPARTMENT OF TRANSPORTATION

Wang Engineering, Inc.
Consulting Geotechnical and Environmental Engineers
wangeng@wangeng.com
1145 N. Main Street
Lombard, IL 60148
Telephone: 630 953-9928
Fax: 630 953-9938

BORING LOG BB-02
WEI Job No.: 950-04-02

Datum: NGVD
Elevation: 696.00 ft
North: 1878898.98 ft
East: 1026169.64 ft
Station: 191+69
Offset: 37 R

Client: Christian-Roge and Associates, Inc.
Project: IL Rte. 56 (FAP 365) Butterfield Road
Location: DuPage County, Illinois

Page 1 of 2

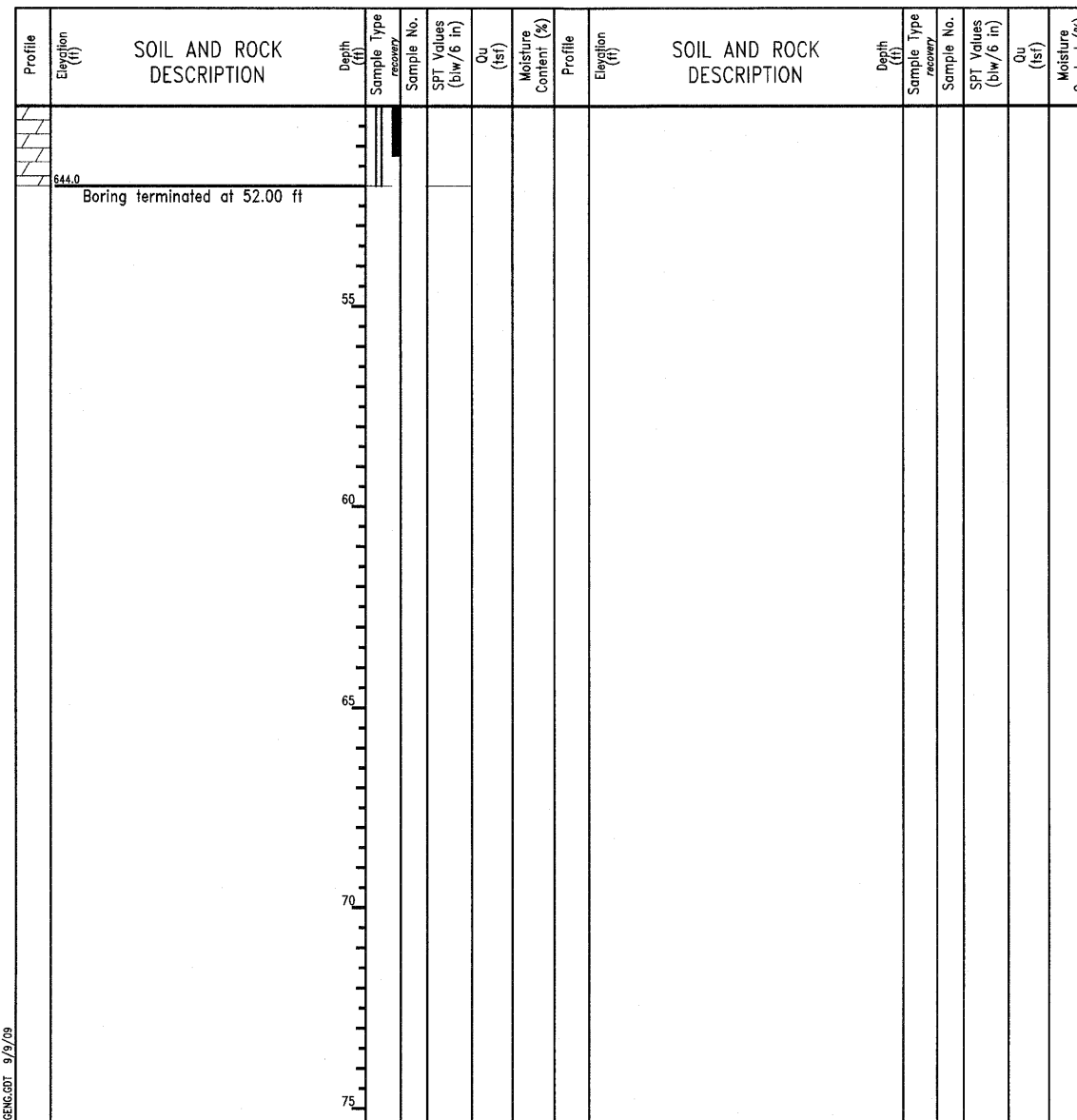
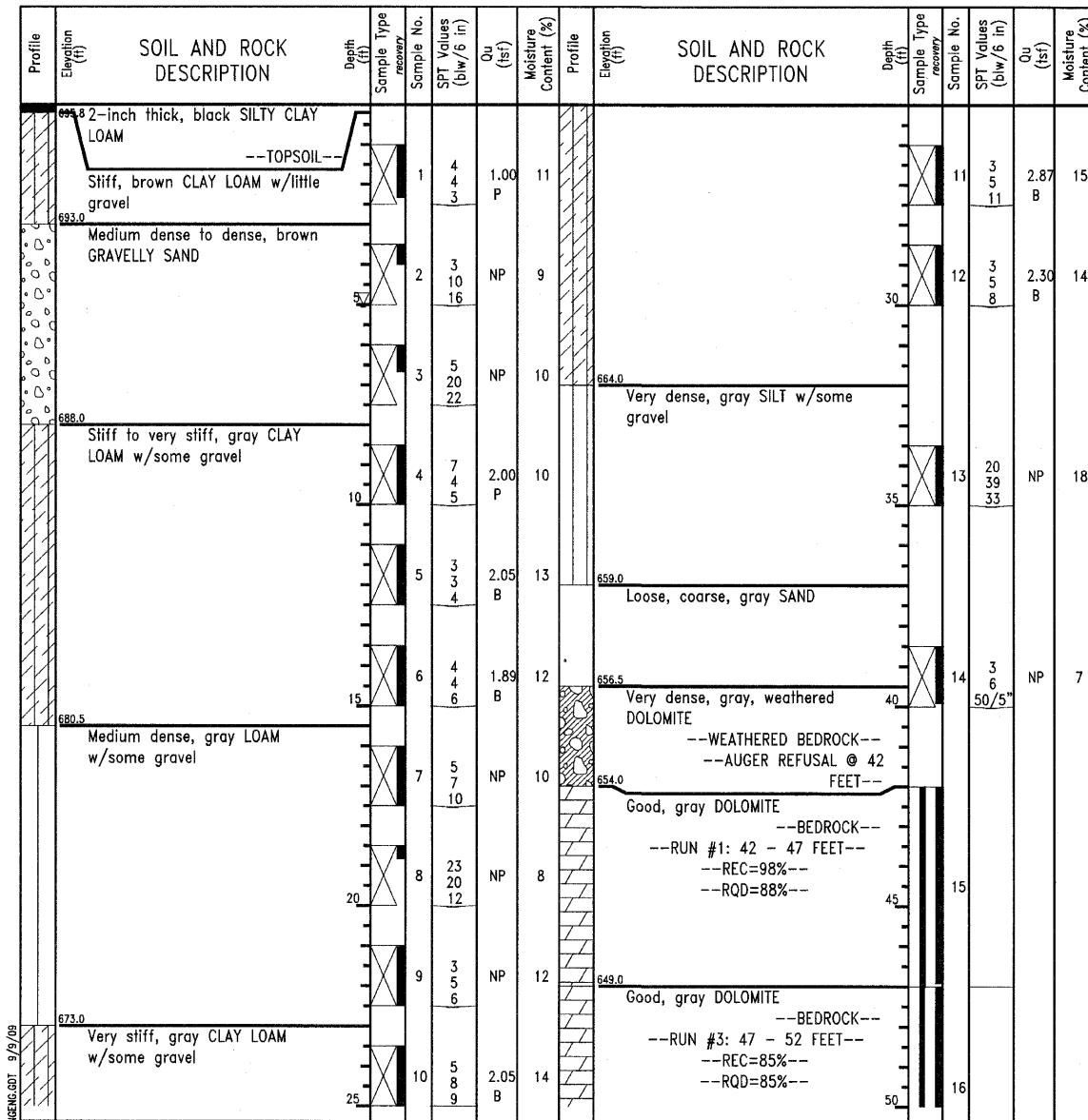
Wang Engineering, Inc.
Consulting Geotechnical and Environmental Engineers
wangeng@wangeng.com
1145 N. Main Street
Lombard, IL 60148
Telephone: 630 953-9928
Fax: 630 953-9938

BORING LOG BB-02
WEI Job No.: 950-04-02

Datum: NGVD
Elevation: 696.00 ft
North: 1878898.98 ft
East: 1026169.64 ft
Station: 191+69
Offset: 37 R

Client: Christian-Roge and Associates, Inc.
Project: IL Rte. 56 (FAP 365) Butterfield Road
Location: DuPage County, Illinois

Page 2 of 2



GENERAL NOTES		WATER LEVEL DATA	
Begin Drilling	07-17-2009	Complete Drilling	08-06-2009
Drilling Contractor	WTS	Drill Rig	Mobile B-57
Driller	J&K	Logger	B. Wilson
Checked by	S. Sugiarto	Drilling Method	4.25 ID HSA; Boring Backfilled Upon Completion
While Drilling	5.00 ft	At Completion of Drilling	WASHED
Time After Drilling	NA	Depth to Water	NA

The stratification lines represent the approximate boundary between soil types; the actual transition may be gradual.

GENERAL NOTES		WATER LEVEL DATA	
Begin Drilling	07-17-2009	Complete Drilling	08-06-2009
Drilling Contractor	WTS	Drill Rig	Mobile B-57
Driller	J&K	Logger	B. Wilson
Checked by	S. Sugiarto	Drilling Method	4.25 ID HSA; Boring Backfilled Upon Completion
While Drilling	5.00 ft	At Completion of Drilling	WASHED
Time After Drilling	NA	Depth to Water	NA

The stratification lines represent the approximate boundary between soil types; the actual transition may be gradual.

DESIGNED -
CHECKED -
DRAWN -
CHECKED -

SOIL BORING LOGS-II
IL. ROUTE 56 OVER
WEST BRANCH DuPAGE RIVER
F.A.P. RTE. 365
SECTION (58&59) WRS-3
DuPAGE COUNTY
STA. 192+38.00
STRUCTURE NO. 022-2027

CHRISTIAN-ROGE & ASSOCIATES, INC.
ENGINEERS-PLANNERS-SURVEYORS
211 WEST WACKER DRIVE
CHICAGO, ILLINOIS 60606
PHONE: (312)372-2023 FAX: (312)372-5274

SHEET NO. S41	F.A. RTE. 365	SECTION (58&59) WRS-3	COUNTY DuPAGE	TOTAL SHEETS 466	SHEET NO. 247
S43 SHEETS		CONTRACT NO. 62420		ILLINOIS FED. AID PROJECT	