

BENCH MARK: CRA 18

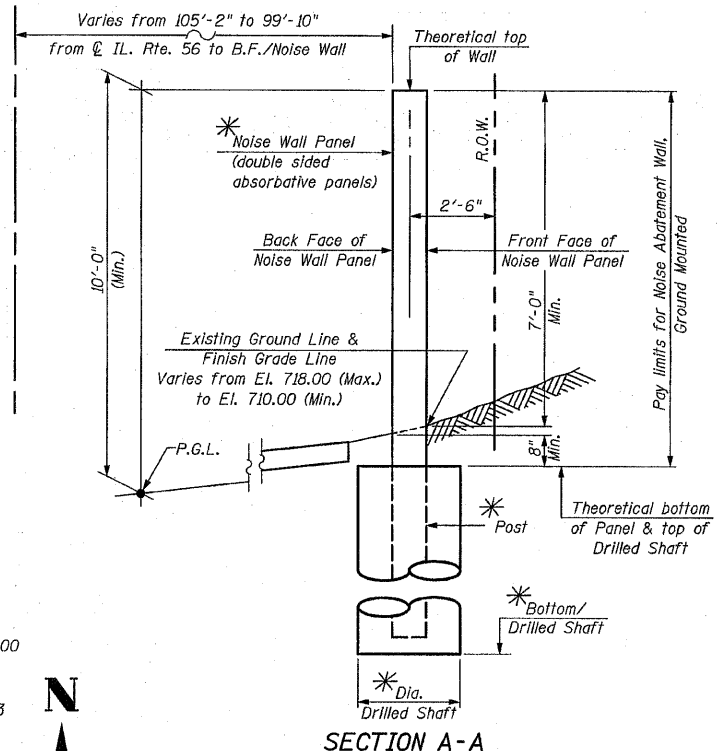
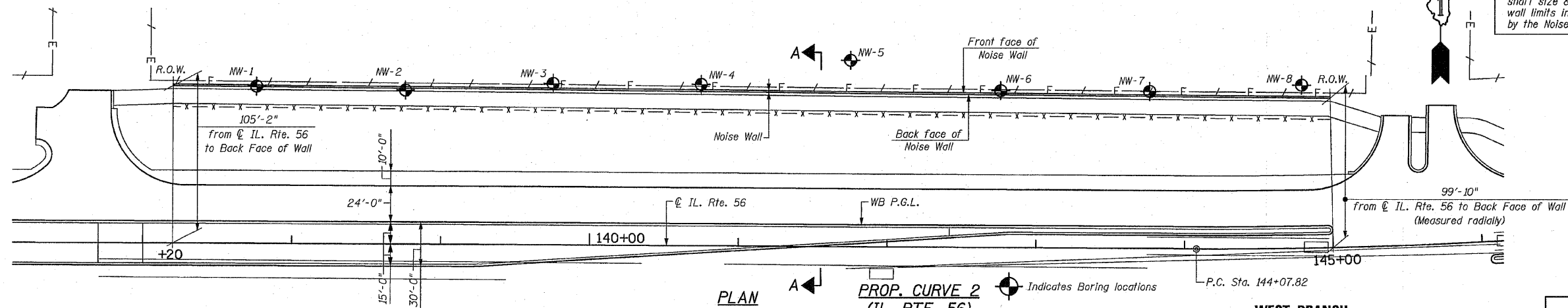
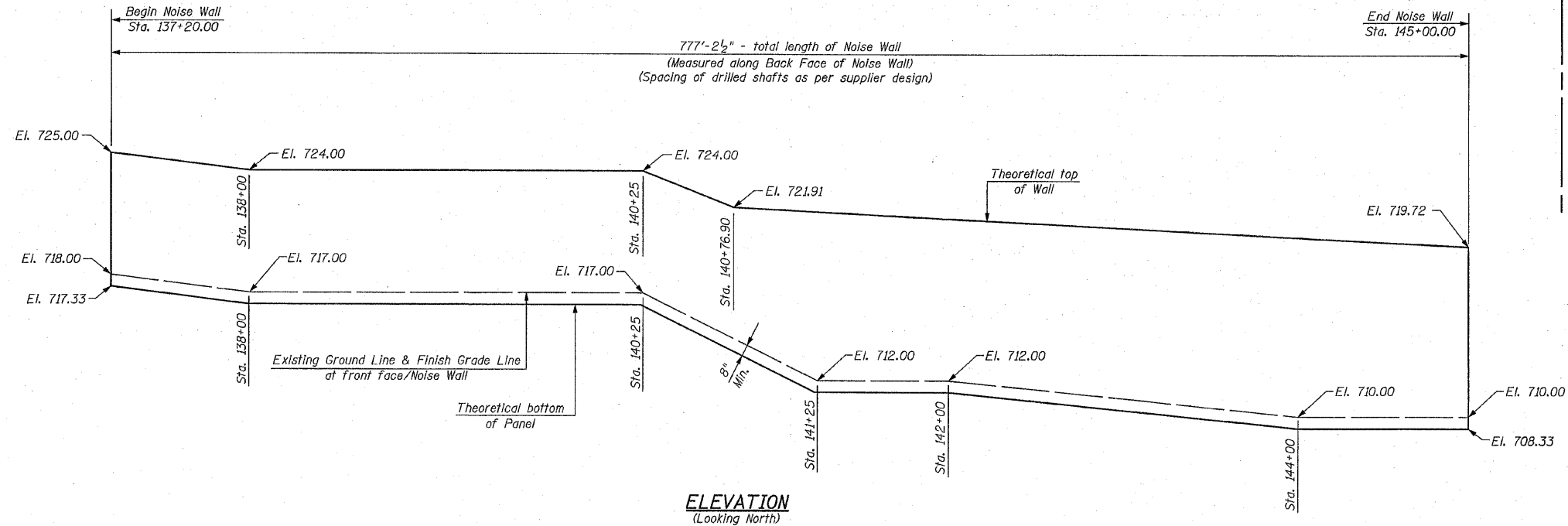
South bolt on fire hydrant at Sta. 173+03.39, 92.89' Lt., Elev. 703.55

The Noise Wall will be installed during Stage II Construction.

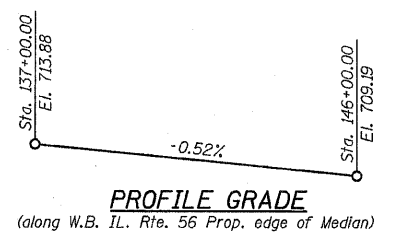
Existing Structure: none

Salvage: none

STATE OF ILLINOIS
DEPARTMENT OF TRANSPORTATION



* Type, size & spacing of posts, Noise Wall Panels, drilled shaft size & embedment length, reinforcement details and wall limits including top & bottom of wall to be determined by the Noise Wall supplier during construction



BILL OF MATERIAL

Item	Unit	Total
Noise Abatement Wall, Ground Mounted	Sq. Ft.	6,814

NOTE:
The Foundation, Posts & Noise Wall Panels shall be designed to accommodate the ultimate or maximum Noise Wall height and earth retention condition.

NOTES:
The foundation is to be designed by the Contractor.
The foundation is not to be placed within 1'-0" of any pipes, culverts or utilities.
The Contractor shall verify any obstruction to pipes, culverts and utilities prior to construction of foundation.

PROP. CURVE 2

(IL. RTE. 56)
PI = Sta. 152+72.86
 $\Delta = 29^\circ-07'-26''$ (L.T.)
D = 1'-43'-14"
R = 3,330.00'
T = 865.04'
L = 1,692.66'
E = 110.52'
e = 3.14%
T.P. = 72.61'
S.E. RUN = 114'
P.C. Sta. = 144+07.82
P.T. Sta. = 161+00.48

HIGHWAY CLASSIFICATION

F.A.P. Rte. 365 (IL. Rte. 56)
Functional Class: Other Principal Arterial
ADT: 14,200 (2005); 25,000 (2030)
ADTT: 690 (2005); 1,070 (2030)
DHW: 3,060 (2030)
Design Speed: 50 m.p.h.
Posted Speed: 45 m.p.h.
Two-Way Traffic
Directional Distribution: 50%/50%

DESIGN SPECIFICATIONS

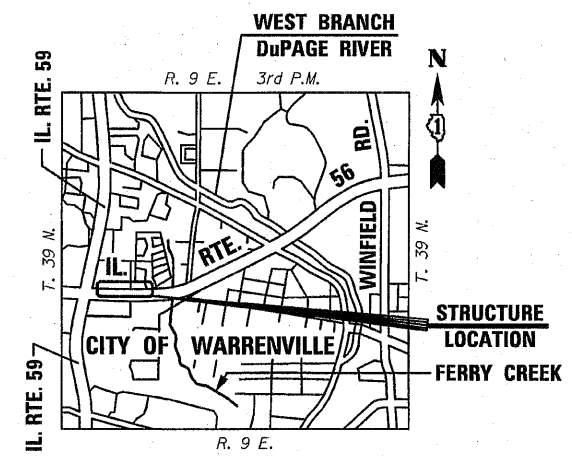
AASHTO 2002 Standard Specifications for Highway Bridges.
AASHTO 1989 Guide Specifications for Structural Design of Sound Barriers and 1992 & 2002 Interims.

LOADING

Wind Load on Noise Wall = 25psf

DESIGN STRESSES

FIELD UNITS
 $f'_c = 3,500$ psi
 $f_y = 60,000$ psi (Reinforcement)



DESIGNED -	200
CHECKED -	EXAMINED
DRAWN -	PASSED
CHECKED -	ENGINEER OF BRIDGES AND STRUCTURES

SHEET NO. RW-1	F.A. RTE. 365	SECTION (58&59) WRS-3	COUNTY DuPAGE	TOTAL SHEETS 466	SHEET NO. 261
RW-5 SHEETS					
CONTRACT NO. 62420					
145+13.00 ILLINOIS FED. AID PROJECT					

CHRISTIAN-ROGE & ASSOCIATES, INC.
ENGINEERS-PLANNERS-SURVEYORS
211 WEST WACKER DRIVE
CHICAGO, ILLINOIS 60606
PHONE: (312)372-2023 FAX: (312)372-5274

GENERAL PLAN & ELEVATION
IL. ROUTE 56
CONCRETE NOISE ABATEMENT WALL
F.A.P. RTE. 365
SECTION (58&59) WRS-3
DuPAGE COUNTY
STA. 137+20 TO STA. 145+00
STRUCTURE NO. 022-W041