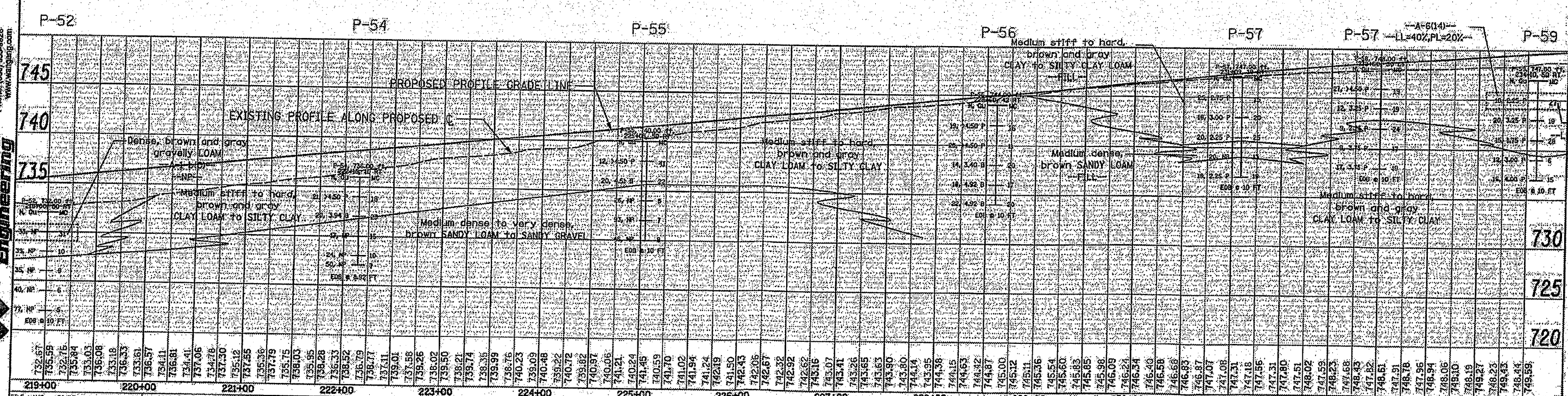
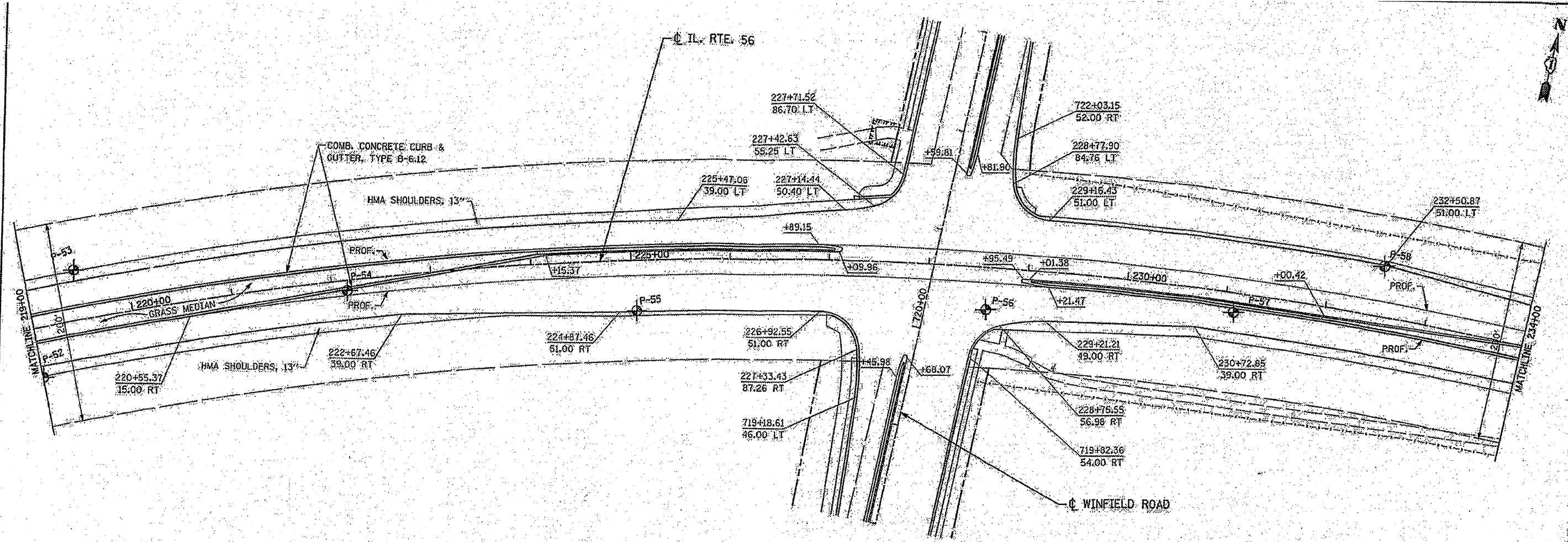


1145 N. Main Street
Lombard, IL 60148
Phone: (630) 652-9928
www.wangeng.com

Wang Engineering



FILE NAME: A:\FILES\	DESIGNED: S.J.P.	REVISED:	STATE OF ILLINOIS DEPARTMENT OF TRANSPORTATION	BORING LOCATION PLAN AND SOIL PROFILE IL RTE. 56	F.A.R.:	SECTION:	COUNTY:	TOTAL SHEETS:	
PLOT DATE: 6/24/09	DRAWN: B.R.S.	REVISED:			365	(56&59) WRS-3	DU PAGE	466	330
PLOT SCALE: 1"=40'	CHECKED: M.P.	REVISED:			CONTRACT NO. 6242D				
DATE: JUNE 2009	REVISED:				FED. ROAD DIST. NO. 11 ILLINOIS FED. AID PROJECT				