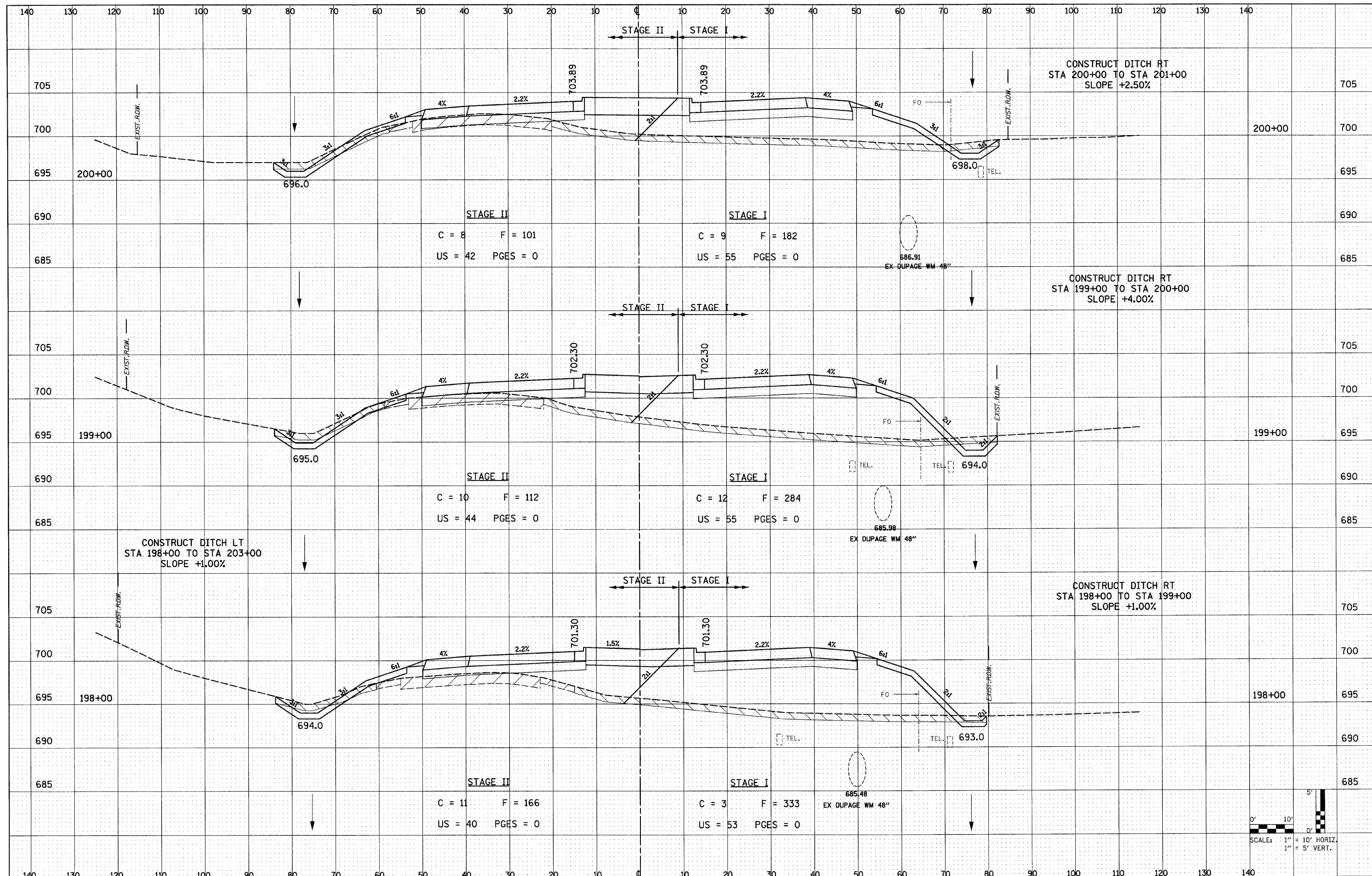


DATE	
BY	
FINAL SURVEY	
SURVEYED	
PLOTTED	
NOTE BOOK	
AREAS CHECKED	
NO.	

DATE	
BY	
ORIGINAL SURVEY	
SURVEYED	
PLOTTED	
NOTE BOOK	
AREAS CHECKED	
NO.	



FILE NAME = 0162420-shr-ssht.dgn
 PLOT DATE = 12/3/2010
 PLOT SCALE = 100.000 ' / IN.

CHRISTIAN-ROGE & ASSOCIATES, INC.
 ENGINEERS-PLANNERS-SURVEYORS
 211 WEST WACKER DRIVE
 CHICAGO, ILLINOIS 60606
 PHONE: (312)372-2023 FAX: (312)372-5274

DESIGNED - S.J.P.	REVISED -
DRAWN - W.A.M.	REVISED -
CHECKED - M.P.	REVISED -
DATE - DECEMBER 3, 2010	REVISED -

STATE OF ILLINOIS
DEPARTMENT OF TRANSPORTATION

CROSS SECTIONS
IL. RTE. 56
 SCALE: NONE SHEET NO. 47 OF 74 SHEETS STA. TO STA.

F.A.P. RTE. 365	SECTION (58&59) WRS-3	COUNTY	TOTAL SHEETS 466	SHEET NO. 384
CONTRACT NO. 62420		FED. ROAD DIST. NO. 1 (ILLINOIS) FED. AID PROJECT		

