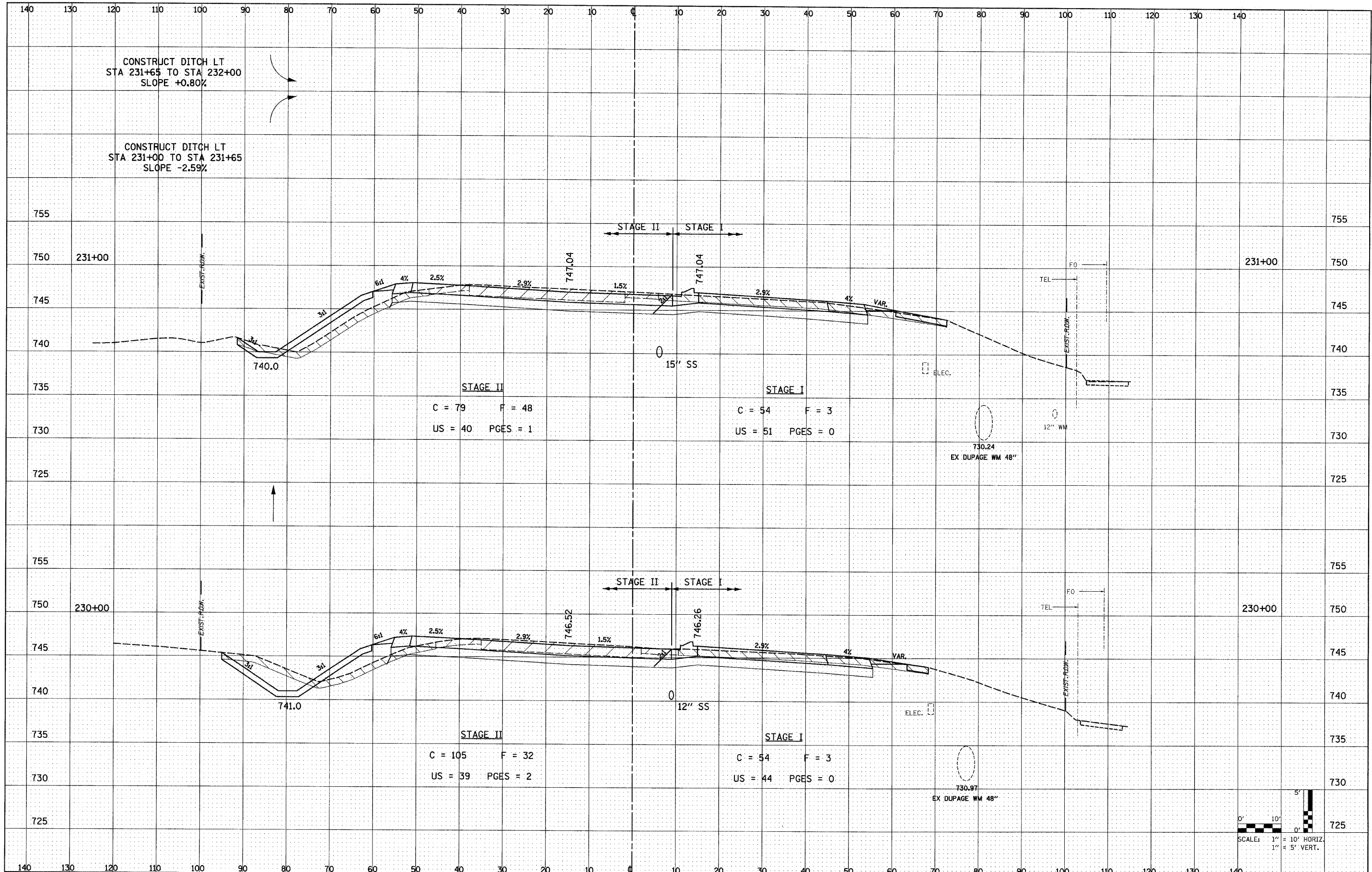


DATE	
BY	
NO.	
FINAL SURVEY	
PLOTTED	
NOTE BOOK	
AREAS CHECKED	

DATE	
BY	
NO.	
ORIGINAL SURVEY	
PLOTTED	
NOTE BOOK	
AREAS CHECKED	



FILE NAME = D162420-sh1-xssht.dgn
 PLOT DATE = 12/3/2010
 PLOT SCALE = 100.000' / IN.

CHRISTIAN ROGE & ASSOCIATES, INC.
 ENGINEERS-PLANNERS-SURVEYORS
 211 WEST WACKER DRIVE
 CHICAGO, ILLINOIS 60606
 PHONE: (312)372-2023 FAX: (312)372-5274

DESIGNED	- S.J.P.	REVISED	-
DRAWN	- W.A.M.	REVISED	-
CHECKED	- M.P.	REVISED	-
DATE	- DECEMBER 3, 2010	REVISED	-

**STATE OF ILLINOIS
 DEPARTMENT OF TRANSPORTATION**

**CROSS SECTIONS
 IL. RTE. 56**

SCALE: NONE SHEET NO. 62 OF 74 SHEETS STA. TO STA.

F.A.P. RTE.	SECTION	COUNTY	TOTAL SHEETS	SHEET NO.
365	(58&59) WRS-3	DUPAGE	466	399
CONTRACT NO. 62420				
FED. ROAD DIST. NO. 1 ILLINOIS FED. AID PROJECT				

