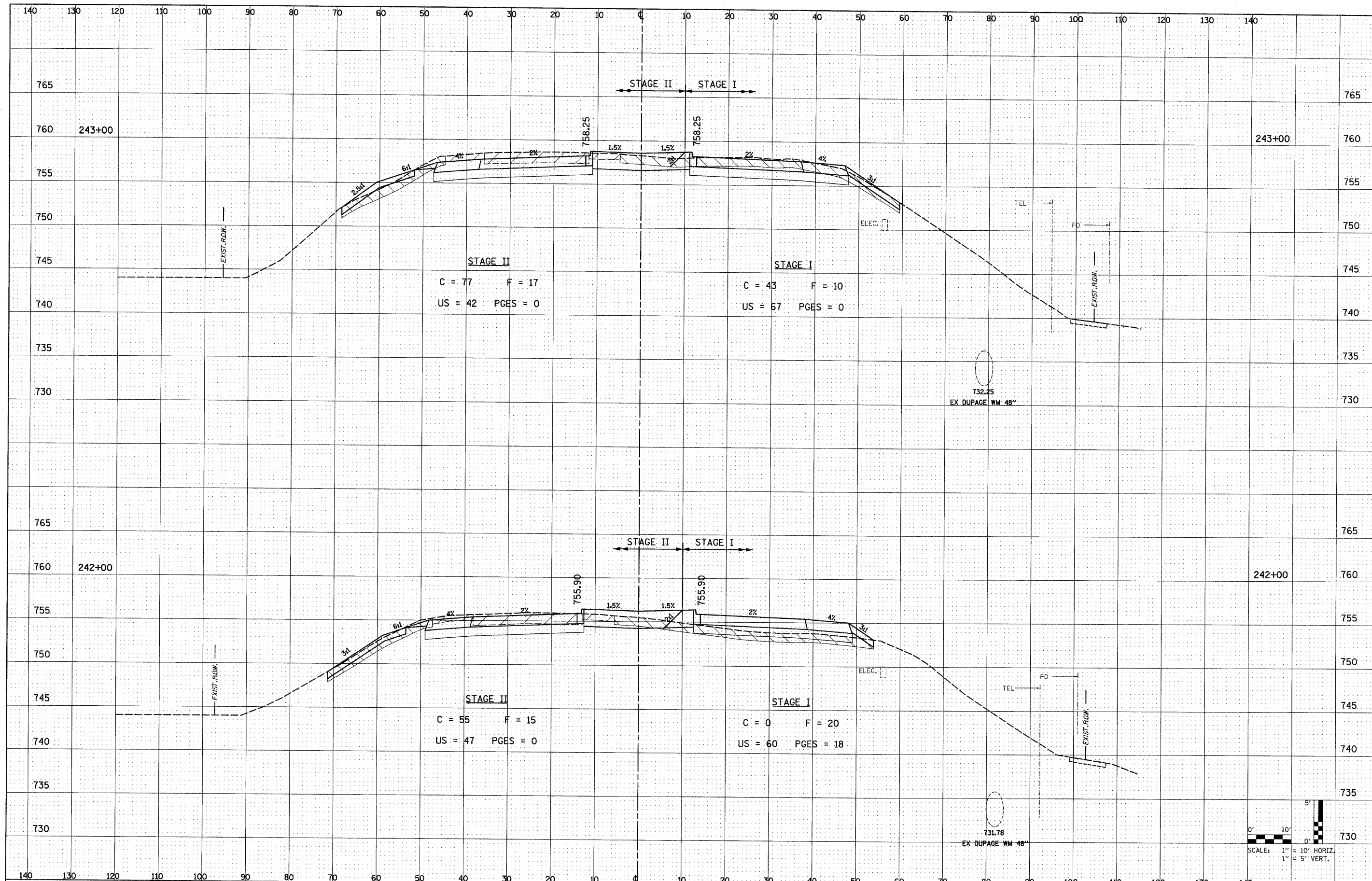


DATE	
BY	
FINAL SURVEY	
SURVEYED	
PLOTTED	
NOTE BOOK	
AREAS CHECKED	
NO.	

DATE	
BY	
ORIGINAL SURVEY	
SURVEYED	
PLOTTED	
NOTE BOOK	
AREAS CHECKED	
NO.	



FILE NAME = D162420-sh1-xssht.dgn  
 PLOT DATE = 12/3/2018  
 PLOT SCALE = 100.000' / IN.

**CR**  
 CHRISTIAN-ROGE & ASSOCIATES, INC.  
 ENGINEERS-PLANNERS-SURVEYORS  
 211 WEST WACKER DRIVE  
 CHICAGO, ILLINOIS 60606  
 PHONE: (312)372-2023 FAX: (312)372-5274

DESIGNED - S.J.P.	REVISED -
DRAWN - W.A.M.	REVISED -
CHECKED - M.P.	REVISED -
DATE - DECEMBER 3, 2010	REVISED -

**STATE OF ILLINOIS**  
**DEPARTMENT OF TRANSPORTATION**

**CROSS SECTIONS**  
**IL. RTE. 56**  
 SCALE: NONE SHEET NO. 68 OF 74 SHEETS STA. TO STA.

F.A.P. RTE. 365	SECTION (58&59) WRS-3	COUNTY DuPAGE	TOTAL SHEETS 466	SHEET NO. 405
FED. ROAD DIST. NO. 1				ILLINOIS FED. AID PROJECT
CONTRACT NO. 62420				

