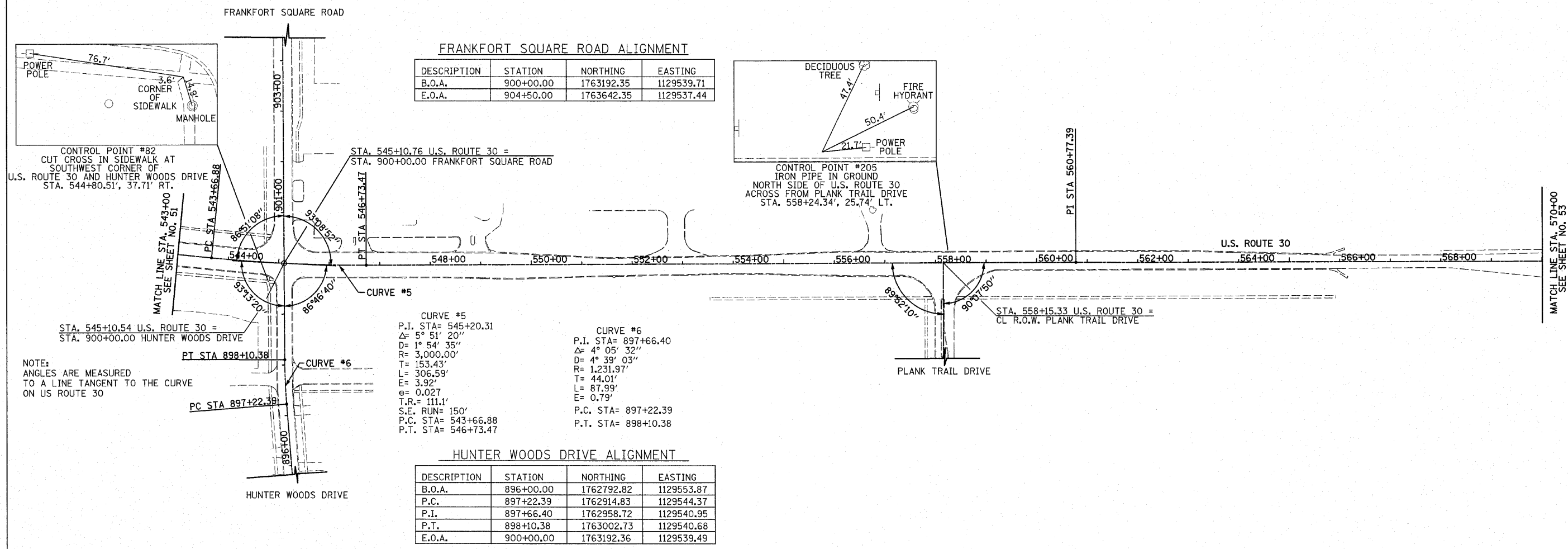


F.A.P. RTE.	SECTION	COUNTY	TOTAL SHEETS	SHEET NO.
353	(12&13)WRS-4	WILL	608	52
STA. 543+00		TO STA. 570+00		
FED. ROAD DIST. NO. 1 ILLINOIS FED. AID PROJECT				



**FRANKFORT SQUARE ROAD ALIGNMENT**

DESCRIPTION	STATION	NORTHING	EASTING
B.O.A.	900+00.00	1763192.35	1129539.71
E.O.A.	904+50.00	1763642.35	1129537.44

<p><b>CURVE #5</b></p> <p>P.I. STA= 545+20.31  <math>\Delta</math>= 5° 51' 20"  D= 1° 54' 35"  R= 3,000.00'  T= 153.43'  L= 306.59'  E= 3.92'  e= 0.027  T.R.= 111.1'  S.E. RUN= 150'  P.C. STA= 543+66.88  P.T. STA= 546+73.47</p>	<p><b>CURVE #6</b></p> <p>P.I. STA= 897+66.40  <math>\Delta</math>= 4° 05' 32"  D= 4° 39' 03"  R= 1,231.97'  T= 44.01'  L= 87.99'  E= 0.79'  P.C. STA= 897+22.39  P.T. STA= 898+10.38</p>
---	---

**HUNTER WOODS DRIVE ALIGNMENT**

DESCRIPTION	STATION	NORTHING	EASTING
B.O.A.	896+00.00	1762792.82	1129553.87
P.C.	897+22.39	1762914.83	1129544.37
P.I.	897+66.40	1762958.72	1129540.95
P.T.	898+10.38	1763002.73	1129540.68
E.O.A.	900+00.00	1763192.36	1129539.49

**CONTROL POINTS**

C.P. #	NORTHING	EASTING	STATION	OFFSET	ELEVATION
82	1763156.37	1129507.25	544+80.51	37.71' RT.	730.54
205	1763219.38	1130853.11	558+24.34	25.74' LT.	743.95

**NOTE:**  
THREE TIE POINTS ARE PROVIDED ONLY TO FIND GENERAL LOCATION OF CONTROL POINT, NOT TO ACCURATELY RECREATE POINT

**NOTES:**  
EXISTING ROAD CONFIGURATION SHOWN  
B.O.A. = BEGINNING OF ALIGNMENT  
P.C. = POINT OF CURVATURE  
P.R.C. = POINT OF REVERSE CURVATURE  
P.T. = POINT OF TANGENT  
P.I. = POINT OF INTERSECTION  
E.O.A. = END OF ALIGNMENT  
B.M. = BENCHMARK  
C.P. = CONTROL POINT

REVISIONS	
NAME	DATE

ILLINOIS DEPARTMENT OF TRANSPORTATION  
**U.S. ROUTE 30**  
ALIGNMENT, TIES AND BENCHMARKS

STATION 543+00 TO STATION 570+00

SCALE IN FEET

DATE 6/11/2010

DRAWN BY JRR  
CHECKED BY JRV