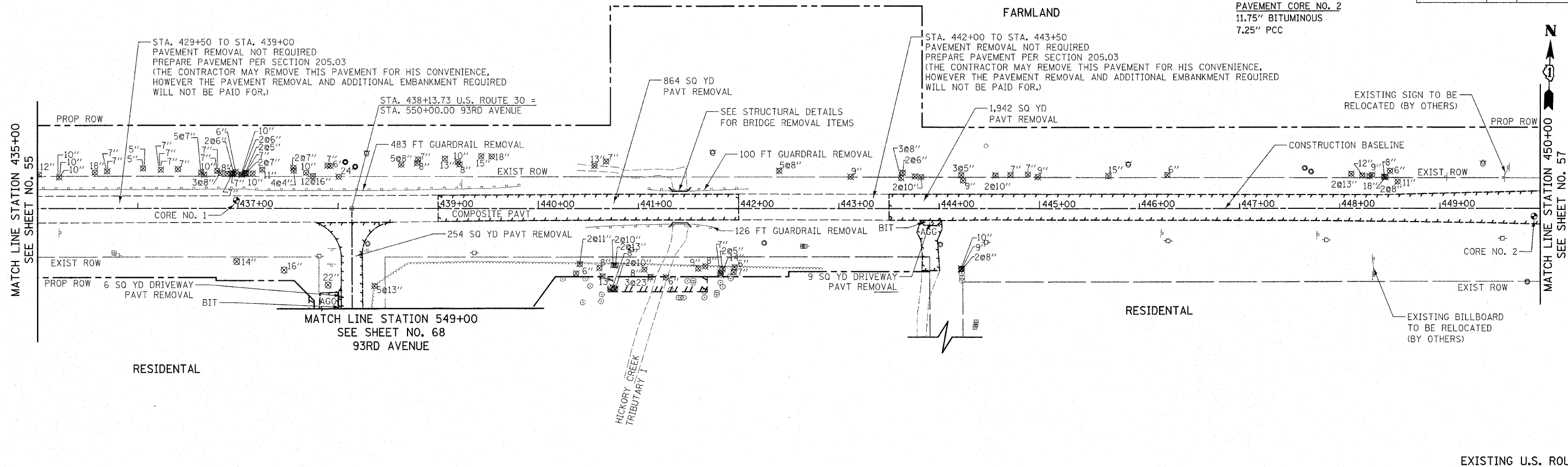


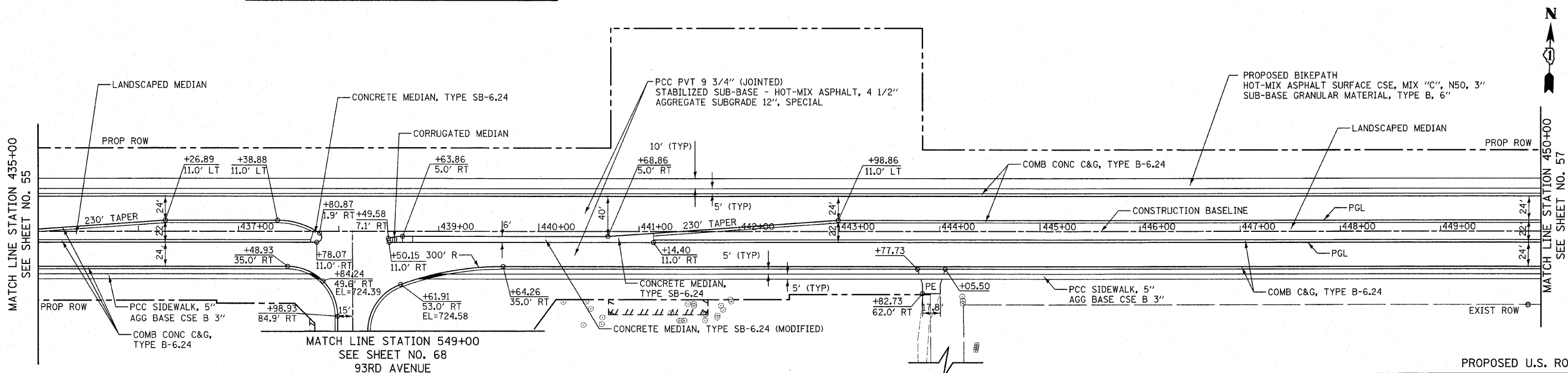
F.A.P. RTE.	SECTION	COUNTY	TOTAL SHEETS	SHEET NO.
353	(12&13)WRS-4	WILL	608	56
STA. 435+00		TO STA. 450+00		
FED. ROAD DIST. NO. 1 ILLINOIS FED. AID PROJECT				

PAVEMENT CORE NO. 1
9.5" BITUMINOUS
6.75" PCC

PAVEMENT CORE NO. 2
11.75" BITUMINOUS
7.25" PCC



NOTE: PROPOSED BIKEPATH TO BE PITCHED TOWARDS PAVEMENT AT 2% AT JUNCTION CHAMBER AT STA. 440+71 LT.



- NOTES:
- ALL DRIVEWAY RADII SHALL BE 15' UNLESS OTHERWISE NOTED. FOR FLARE RATES AND ADDITIONAL DRIVEWAY DETAILS SEE SHEET 496.
 - ALL SIDE STREET CORNER RADII SHALL BE 50' UNLESS OTHERWISE NOTED.
 - FOR CONCRETE MEDIAN DETAILS, SEE SHEET NO. 494.

REVISIONS	
NAME	DATE

ILLINOIS DEPARTMENT OF TRANSPORTATION

U.S. ROUTE 30
ROADWAY PLANS

STATION 435+00 TO STATION 450+00

SCALE IN FEET
0 50

DATE 6/11/2010

DRAWN BY DJK
CHECKED BY JRV