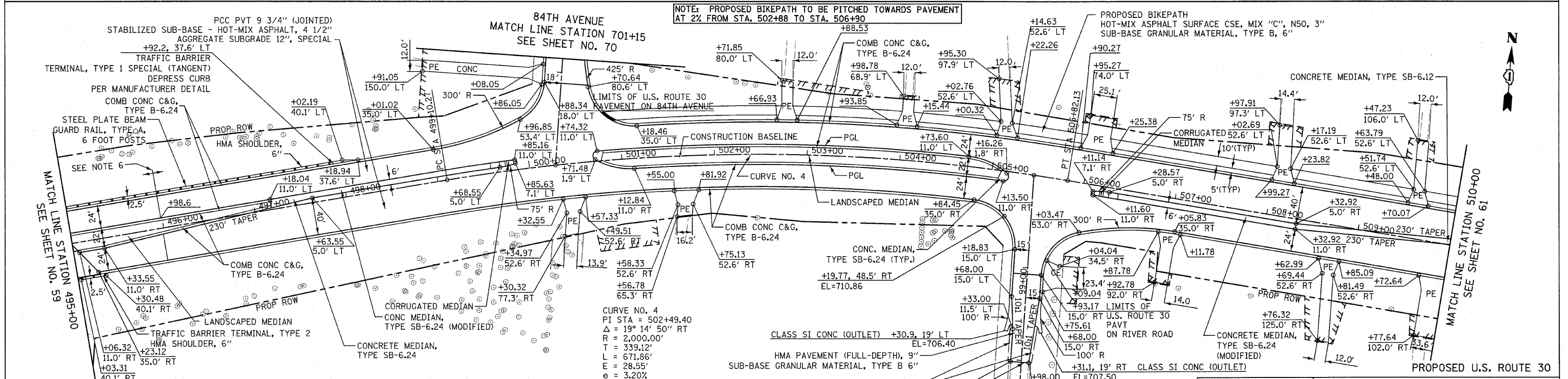
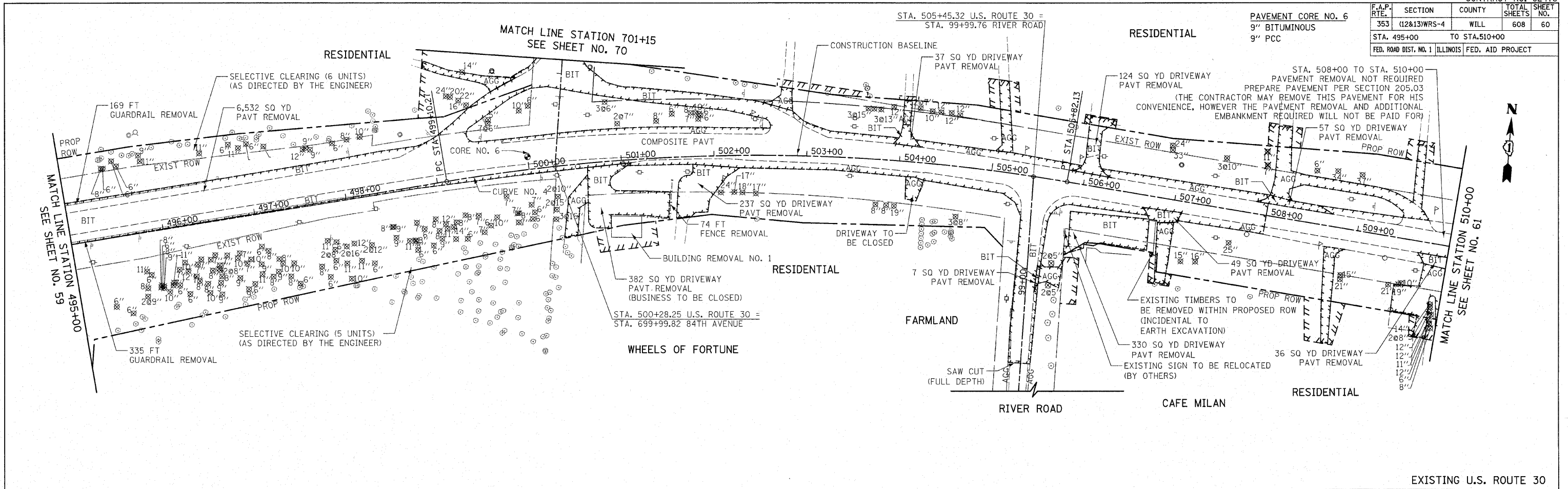


F.A.P. RTE.	SECTION	COUNTY	TOTAL SHEETS NO.	SHEET NO.
353	(12&13)WRS-4	WILL	608	60
STA. 495+00 TO STA. 510+00				
FED. ROAD DIST. NO. 1 ILLINOIS FED. AID PROJECT				



- NOTES:**
1. ALL DRIVEWAY RADII SHALL BE 15' UNLESS OTHERWISE NOTED. FOR FLARE RATES AND ADDITIONAL DRIVEWAY DETAILS SEE SHEET 496.
 2. ALL SIDE STREET CORNER RADII SHALL BE 50' UNLESS OTHERWISE NOTED.
 3. FOR CONCRETE MEDIAN DETAILS, SEE SHEET NO. 494.
 4. FOR SUPERELEVATION DETAILS, SEE SHEET NO. 310 TO 311.

5. TRANSITION GUTTER WIDTH AT THE APPROACH PAVEMENT AS SHOWN ON THE STRUCTURAL PLANS. THE INCREASED WIDTH SHALL INCLUDED IN THE COST OF "COMBINATION CONCRETE CURB AND GUTTER, TYPE B-6.24".
6. LIMIT OF PCC PVT 9 3/4" (JOINTED) AT STA. 495+98.6. PAID FOR AS "BRIDGE APPROACH CONNECTOR PAVEMENT (PCC)" FROM STA. 495+98.6 TO LIMITS OF APPROACH PAVEMENT. SEE STANDARD 420401-08.

NOTE:
THE GENERAL CONTRACTOR IS REQUIRED TO HIRE AN ENVIRONMENTAL FIRM WITH AT LEAST FIVE (5) DOCUMENTED LEAKING UNDERGROUND STORAGE TANK (LUST) CLEANUPS OR THAT IS PRE-QUALIFIED IN HAZARDOUS WASTE BY THE DEPARTMENT TO REMEDIATE THE SOIL CONTAMINATION AND MONITOR FOR WORKER PROTECTION.

REVISIONS	NAME	DATE

ILLINOIS DEPARTMENT OF TRANSPORTATION
U.S. ROUTE 30 ROADWAY PLANS
STATION 495+00 TO STATION 510+00

DATE 6/11/2010

SCALE IN FEET

DRAWN BY DJK
CHECKED BY JRV