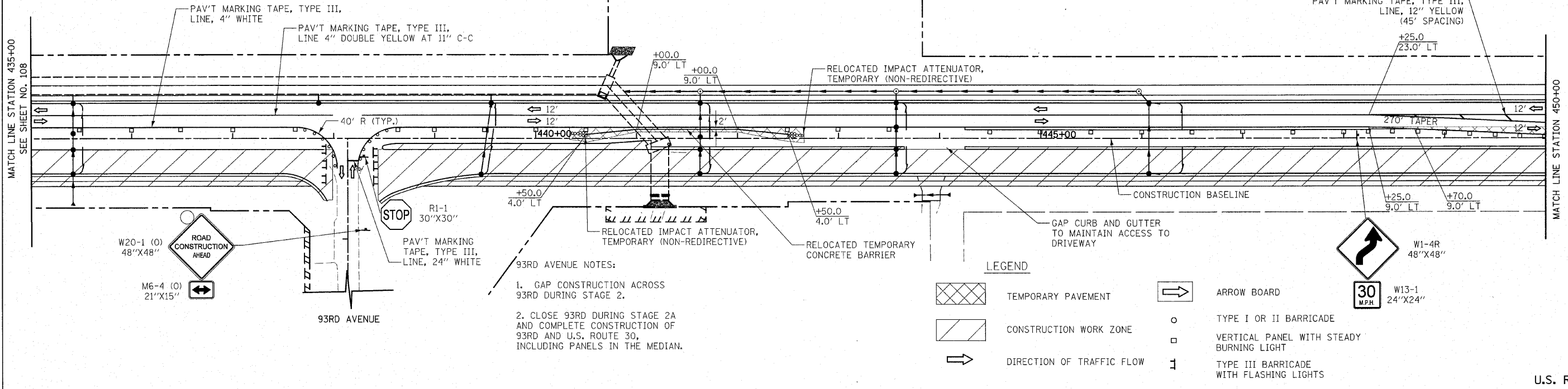


F.A.P. RTE.	SECTION	COUNTY	TOTAL SHEETS	SHEET NO.
353	(12&13)WRS-4	WILL	608	109
STA. 435+00		TO STA. 465+00		
FED. ROAD DIST. NO. 1 ILLINOIS FED. AID PROJECT				

NOTES: SEE SHEET NO. 90-91 FOR DRAINAGE CALL-OFFS.

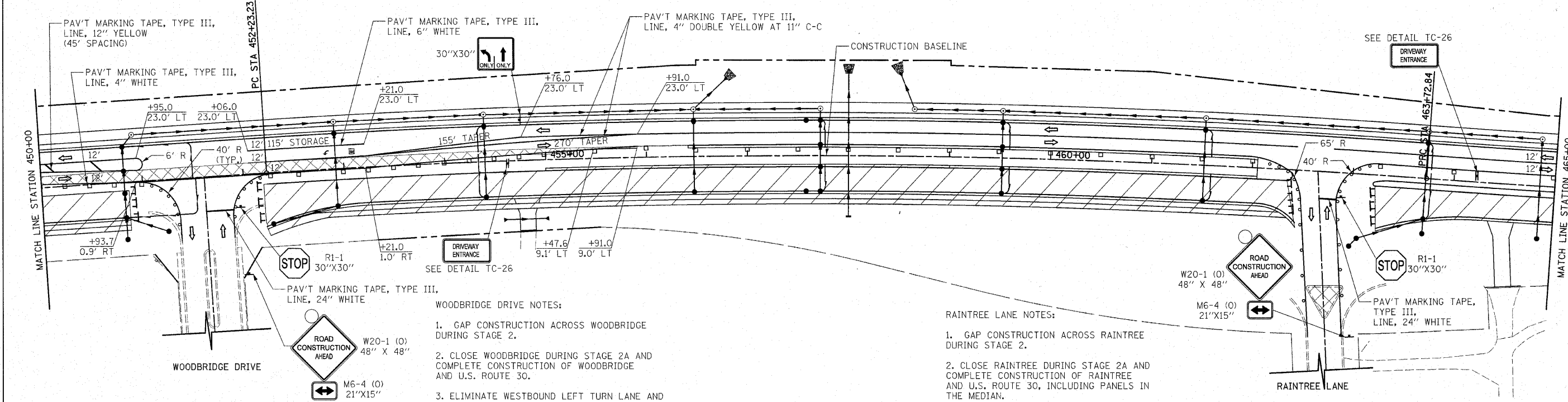


- 93RD AVENUE NOTES:**
- GAP CONSTRUCTION ACROSS 93RD DURING STAGE 2.
 - CLOSE 93RD DURING STAGE 2A AND COMPLETE CONSTRUCTION OF 93RD AND U.S. ROUTE 30, INCLUDING PANELS IN THE MEDIAN.

LEGEND

	TEMPORARY PAVEMENT		ARROW BOARD
	CONSTRUCTION WORK ZONE		TYPE I OR II BARRICADE
	DIRECTION OF TRAFFIC FLOW		VERTICAL PANEL WITH STEADY BURNING LIGHT
			TYPE III BARRICADE WITH FLASHING LIGHTS

U.S. ROUTE 30



- WOODBIDGE DRIVE NOTES:**
- GAP CONSTRUCTION ACROSS WOODBRIDGE DURING STAGE 2.
 - CLOSE WOODBRIDGE DURING STAGE 2A AND COMPLETE CONSTRUCTION OF WOODBRIDGE AND U.S. ROUTE 30.
 - ELIMINATE WESTBOUND LEFT TURN LANE AND RESTRIPE TO ALLOW FOR THE CONSTRUCTION OF PANELS IN THE MEDIAN DURING STAGE 2A.

- RAINTREE LANE NOTES:**
- GAP CONSTRUCTION ACROSS RRAINTREE DURING STAGE 2.
 - CLOSE RRAINTREE DURING STAGE 2A AND COMPLETE CONSTRUCTION OF RRAINTREE AND U.S. ROUTE 30, INCLUDING PANELS IN THE MEDIAN.

REVISIONS	
NAME	DATE

ILLINOIS DEPARTMENT OF TRANSPORTATION
 U.S. ROUTE 30
 MAINTENANCE OF TRAFFIC
 STAGE 2

STATION 435+00 TO STATION 465+00

SCALE IN FEET
 50 0 50

DATE 6/11/2010

DRAWN BY DJK
 CHECKED BY JRV